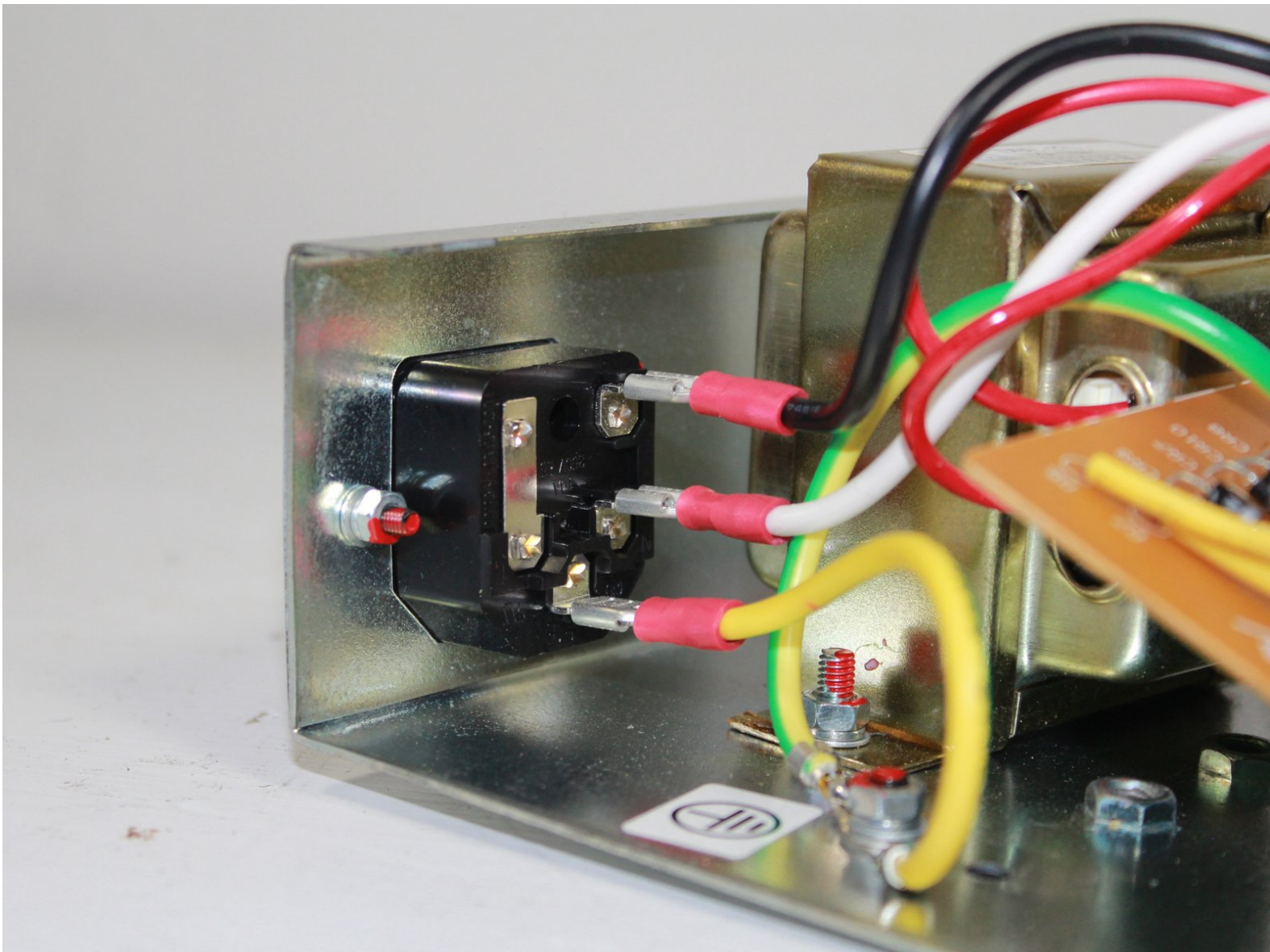




Fender Frontman 15r Power Input Jack Replacement

Written By: Will



INTRODUCTION

If your device does not have power, replace the power input jack.



TOOLS:

- [pair Needle Nose Pliers](#) (1)
 - [Phillips #0 Screwdriver](#) (1)
 - [Phillips #1 Screwdriver](#) (1)
 - [iFixit Opening Tools](#) (1)
 - [Spudger](#) (1)
-

Step 1 — Back panel



- ⚠ Be sure to unplug the device before proceeding.
- Use a Phillips #0 screwdriver to remove the four 21.7mm screws holding the back panel to the frame.

Step 2



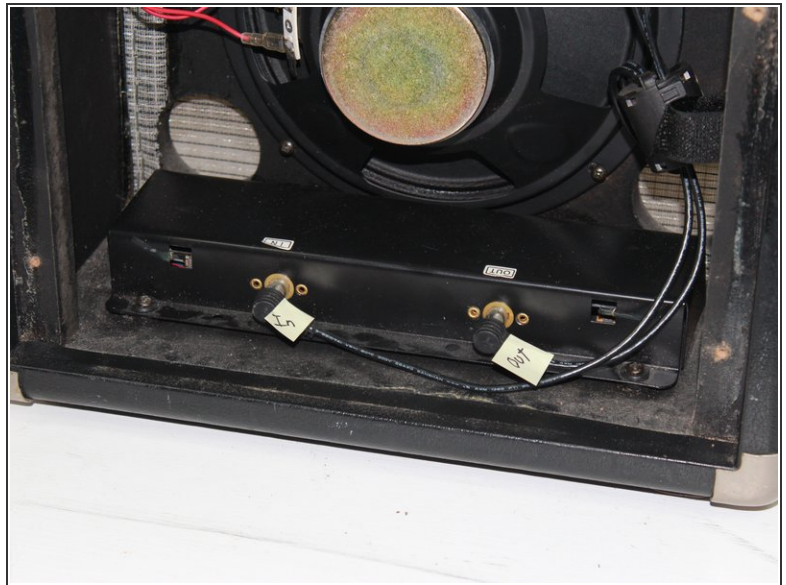
- Once the screws are out, use a plastic opening tool or spudger to pry the top of the back panel open. There may be some resistance, but it will eventually pry loose.

Step 3



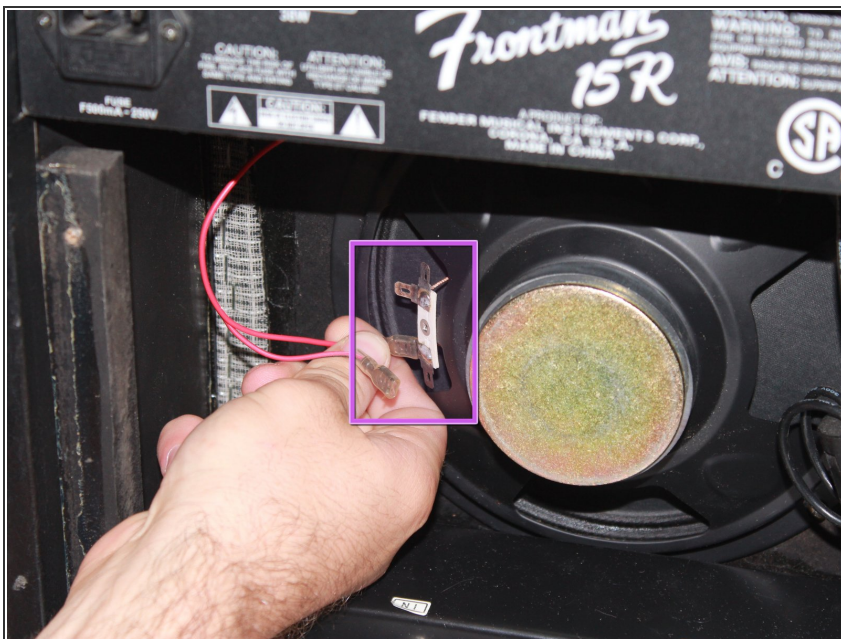
- Once the top is separated, use your hand to remove the back panel from the unit.

Step 4 — Mounting Bracket



- There will be two black wires connecting the top mounting bracket to the reverb box at the bottom of the unit. Label the wires to prevent crossing upon re-installation, then unplug the wires from the reverb box.

Step 5



- Label and unplug the two red wires connecting the mounting bracket to the speaker by pulling them off the nodes.

Step 6



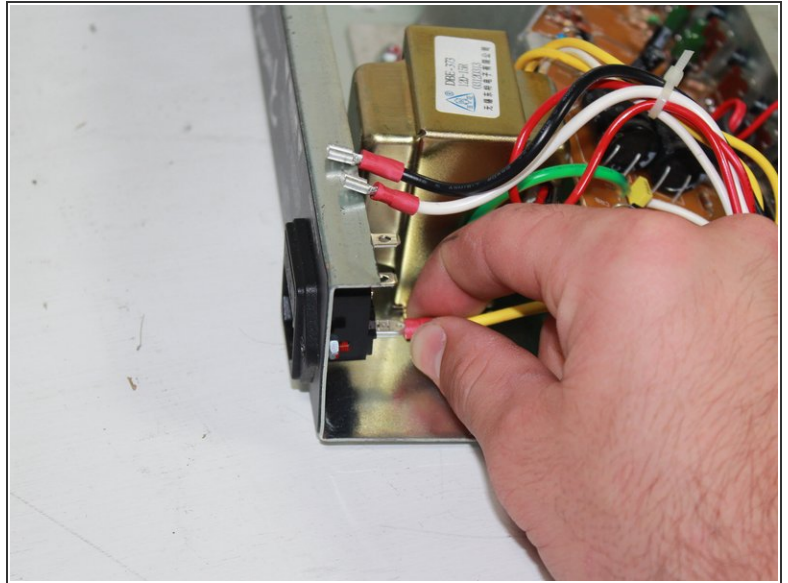
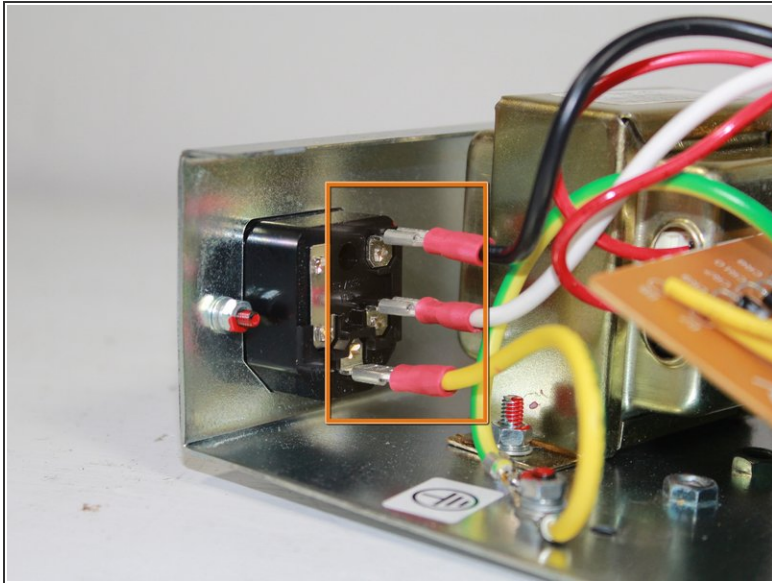
- Use a Phillips #1 screwdriver to unscrew the four 36.4 mm screws holding the mounting bracket to the top of the amp.

Step 7



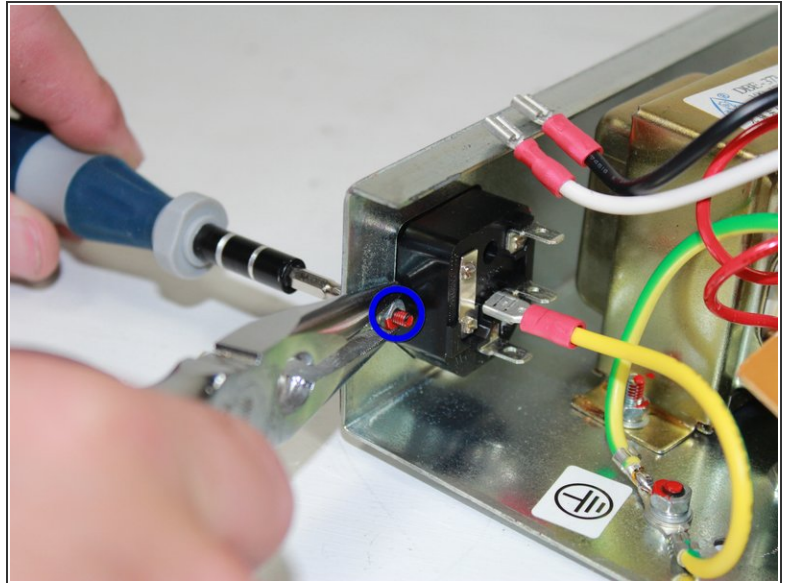
- Pull the mounting bracket free from the frame. It may be wedged in very snug, in which case, use a plastic opening tool/spudger to pry it loose from the front.

Step 8 — Power Input Jack



- Before disconnecting the wires, label, make note of, or memorize each wire according to where it connects to the power input jack.
- Disconnect the wire connectors from the back of the input jack by pulling them away from the jack.

Step 9



- Use Philips #1 Screwdriver to unscrew the two 12.1 mm screws on the exterior of the power input jack.
- Hold the nut in place while unscrewing the 12.1 mm screws using a pair of needle nose pliers to prevent it from spinning.

Step 10



- Pull the power input jack out of the mounting bracket.

Once the old power jack is removed, to install the replacement power jack, follow the guide in reverse.