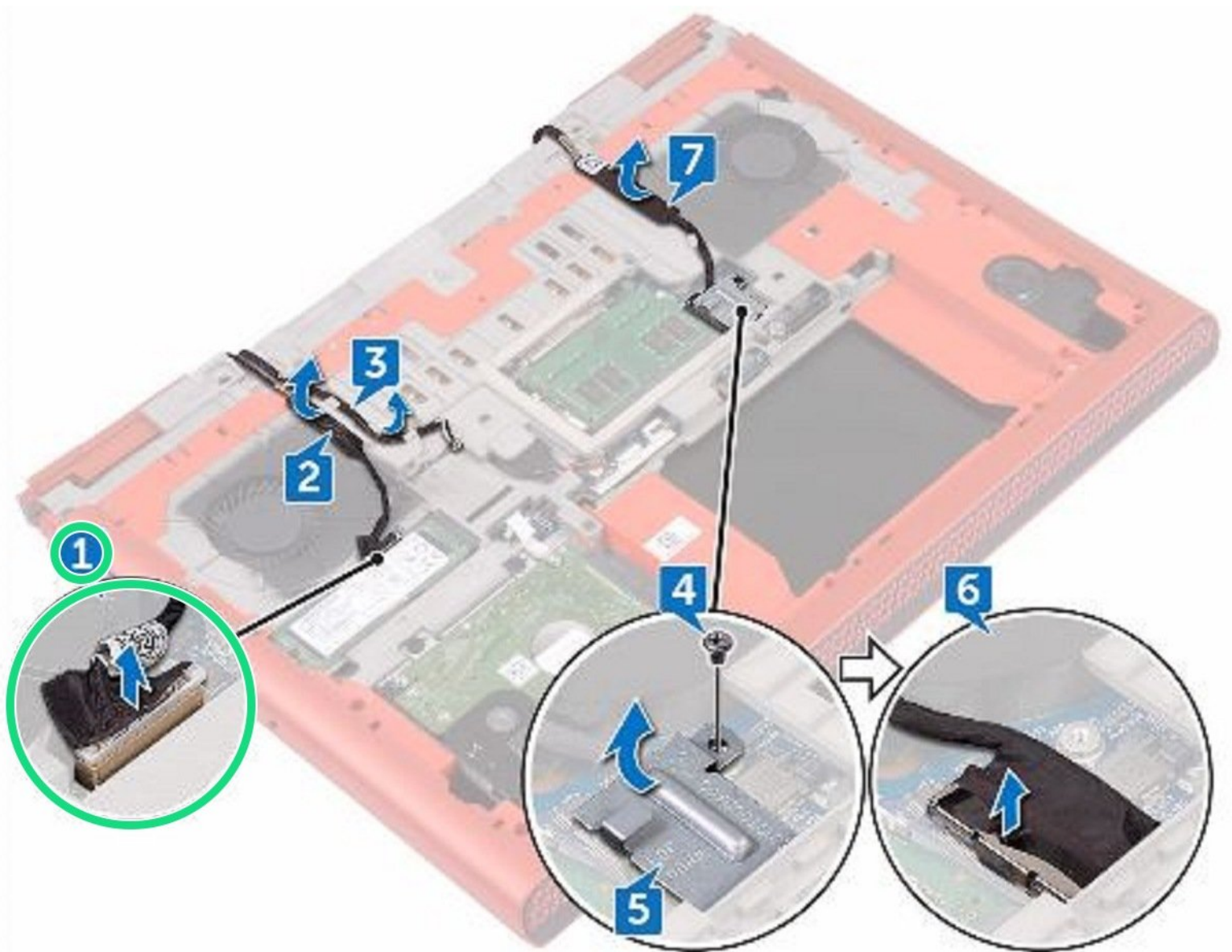




Dell Inspiron 15 Gaming 7566 Display Assembly Replacement

Written By: Terrence15



INTRODUCTION

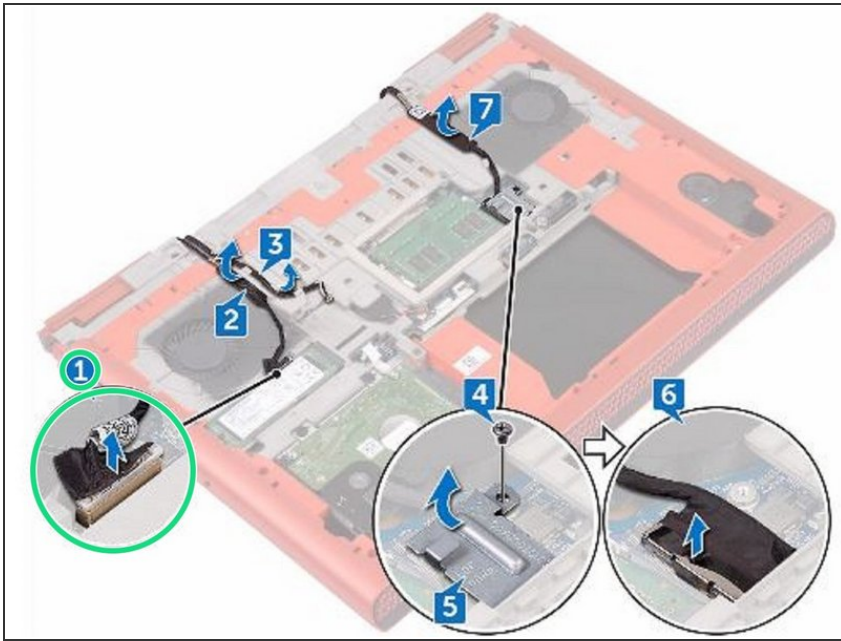
In this guide, we will be showing you how to remove and replace the Display Assembly.



TOOLS:

- [Phillips #0 Screwdriver](#) (1)
-

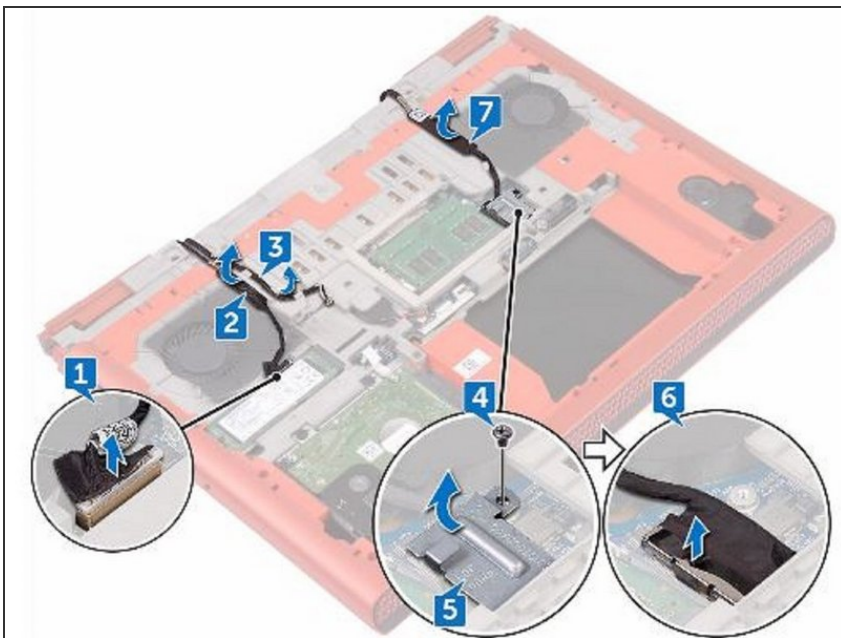
Step 1 — Disconnect the Camera Cable



⚠ WARNING: Before working inside your computer, read the safety information that shipped with your computer and follow the steps in [Before Working Inside Your Computer](#). After working inside your computer, follow the instructions in [After Working Inside Your Computer](#).

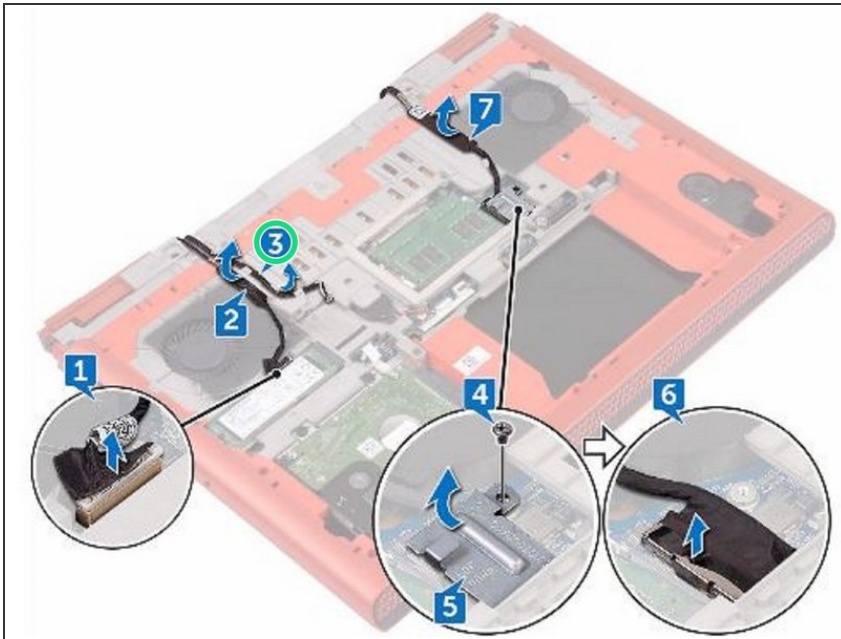
- Using the pull-tab, disconnect the camera cable from the system board.

Step 2 — Peeling the Camera Cable



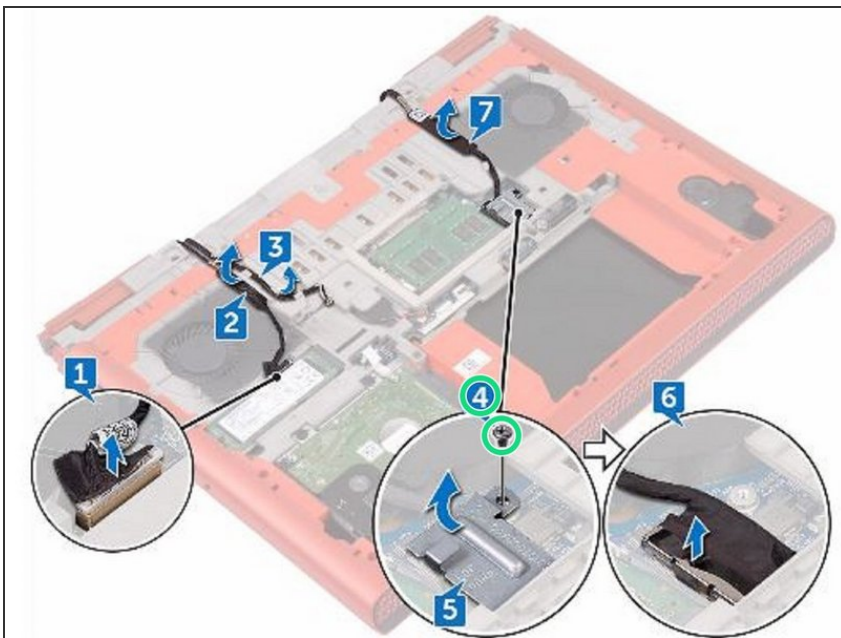
- Peel off the camera cable from the computer base.

Step 3 — Note the Antenna Cables



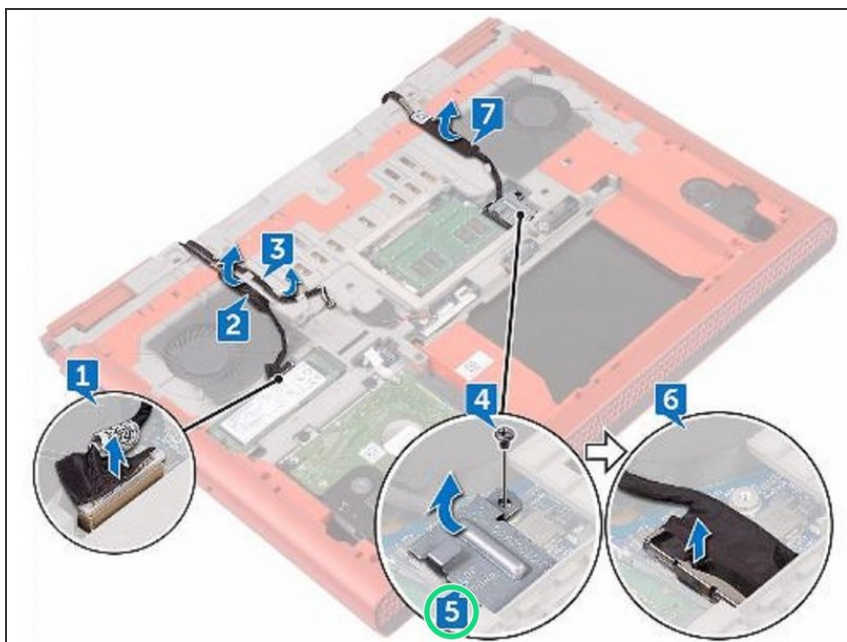
- Note the antenna cables routing and remove the antenna cables from the routing guides on the computer base.

Step 4 — Remove the Screw



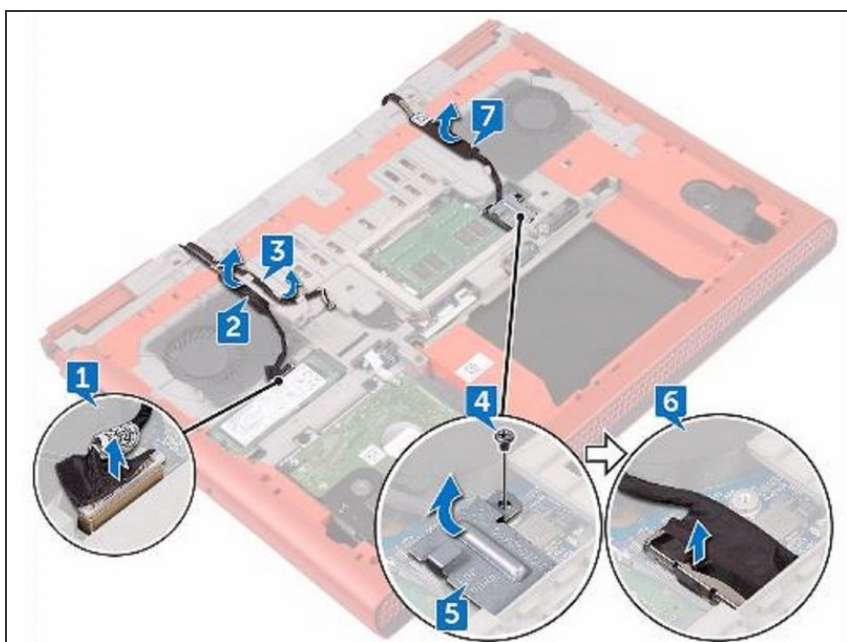
- Remove the screw (M3x3) that secures the display-cable bracket to the system board.

Step 5 — Lifting the Display Cable Bracket



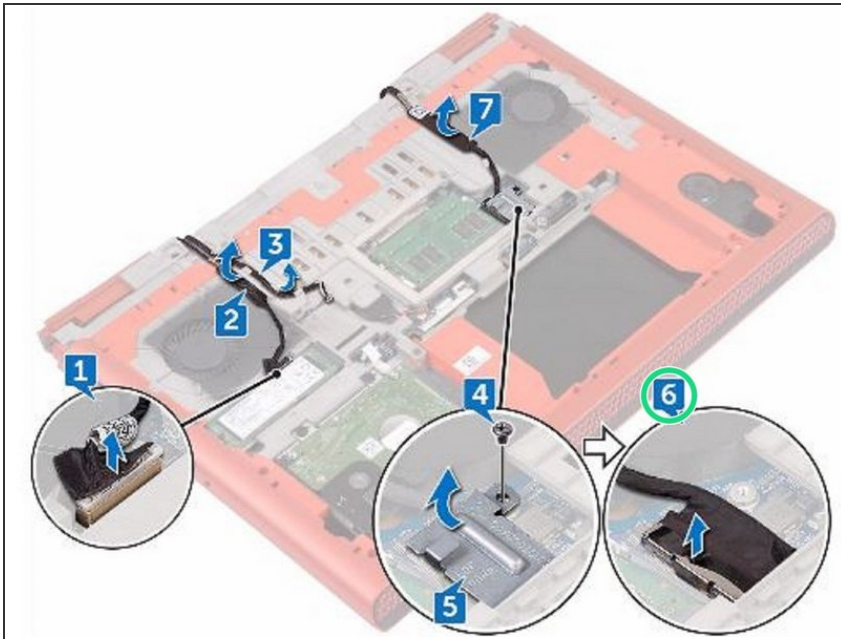
- Lift the display-cable bracket off the computer base.

Step 6 — Disconnect the Display Cable



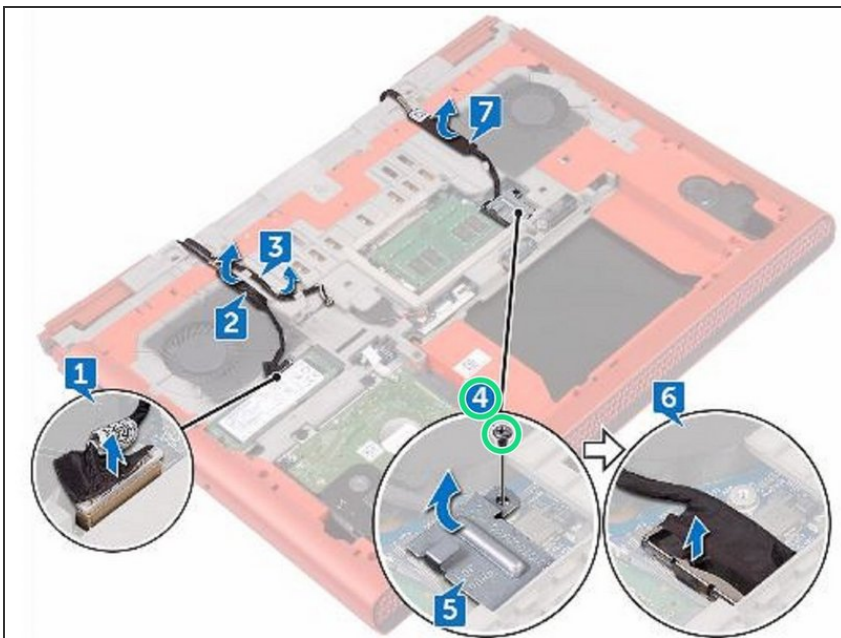
- Using the pull tab, disconnect the display cable from the system board.

Step 7 — Remove the Display Cable



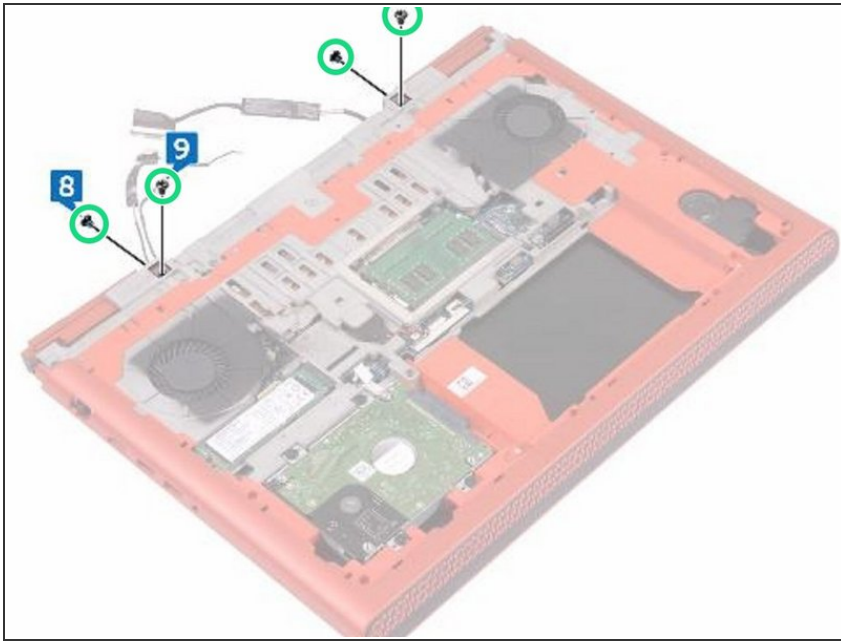
- Remove the display cable from the routing guides on the computer base and peel off the display cable from the computer base.

Step 8 — Remove the Screws



- Remove the two screws (M2x3) that secure the display assembly to the computer base.

Step 9 — Remove the Screws



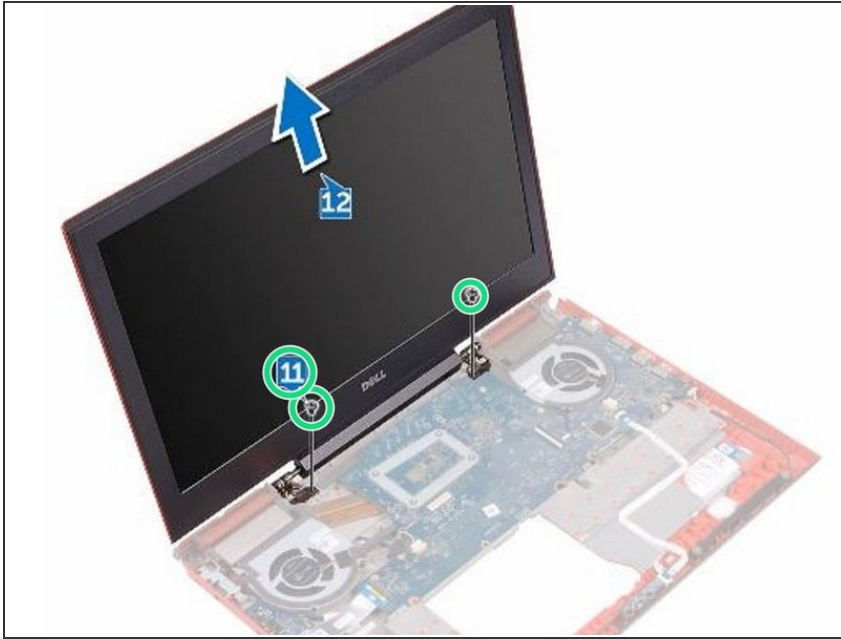
- Remove the two screws (M2.5x5) that secure the display assembly to the computer base.

Step 10 — Turn the Computer



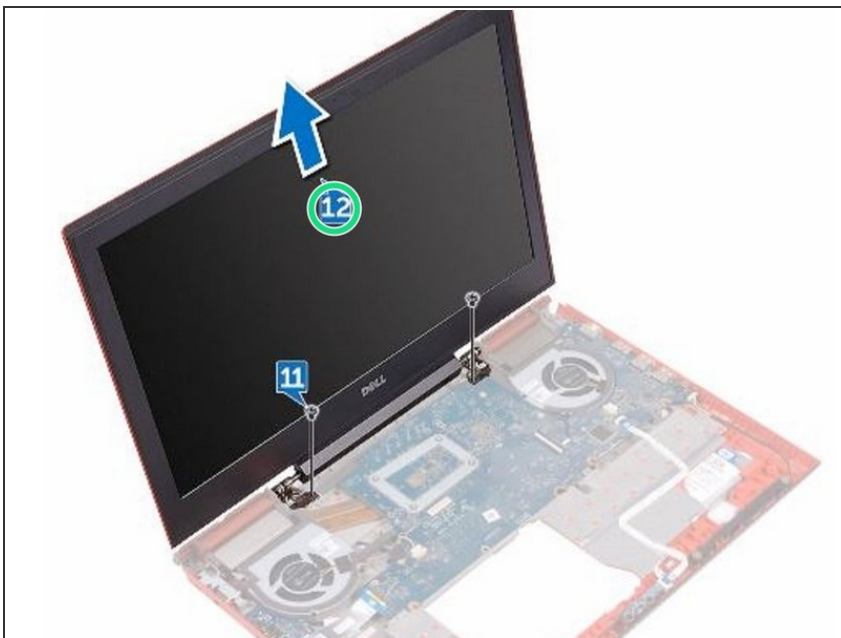
- Turn the computer over and open the display.

Step 11 — Remove the Screws



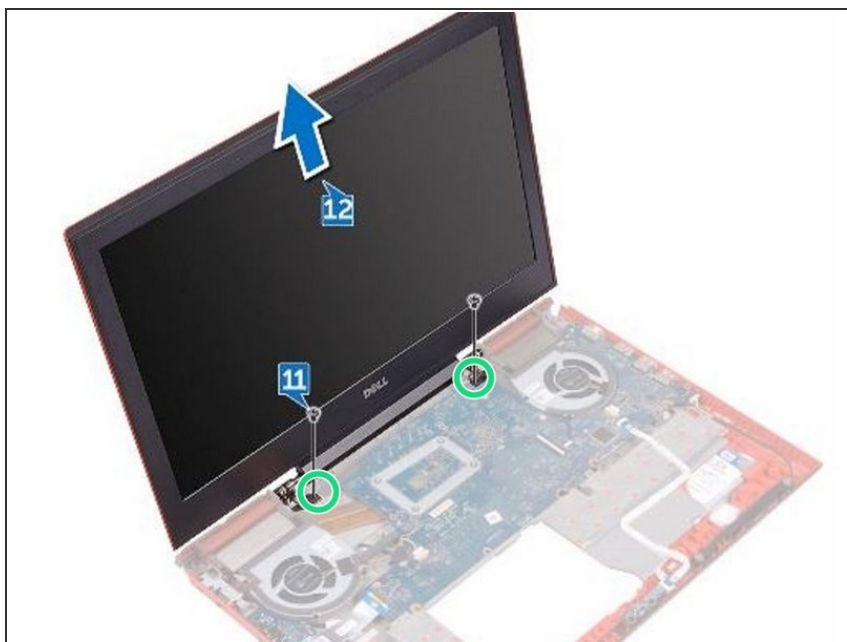
- Remove the two screws (M2.5x5) that secure the display assembly to the computer base.

Step 12 — Lifting the Display Assembly



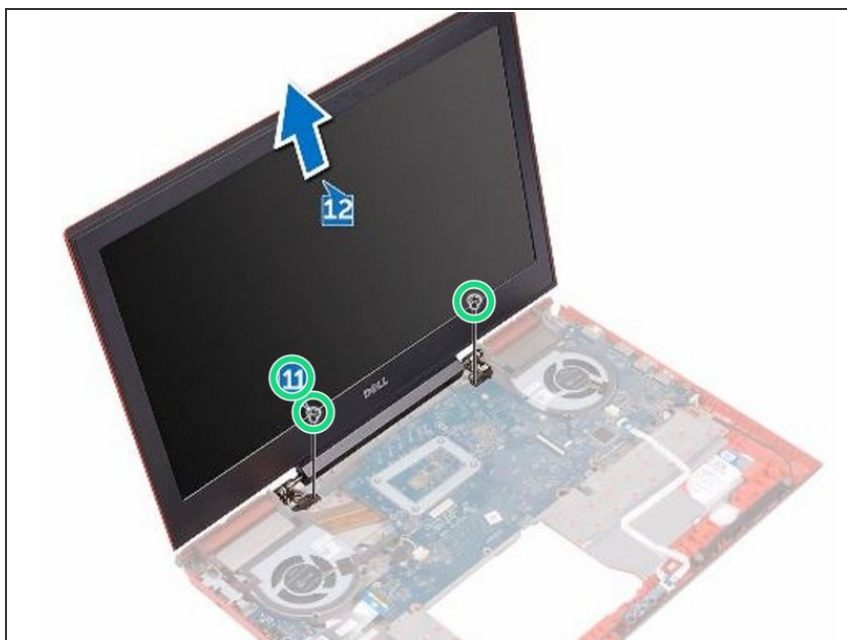
- Lift the display assembly off the computer base.

Step 13 — Align the Screw Holes



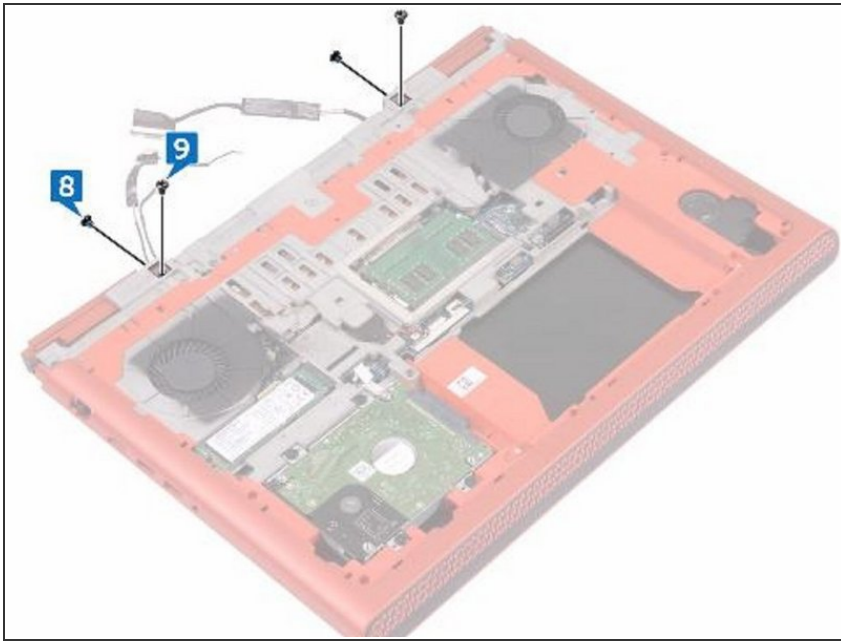
- Align the screw holes on the **NEW** display assembly with the screw holes on the computer base.

Step 14 — Replace the Screws



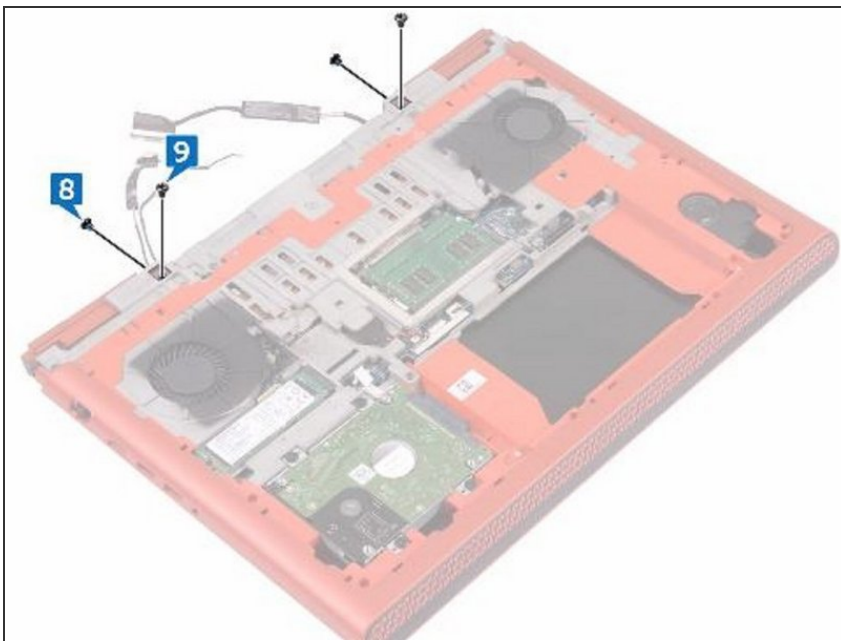
- Replace the two screws (M2x2.5) that secure the display assembly to the computer base.

Step 15 — Close the Display



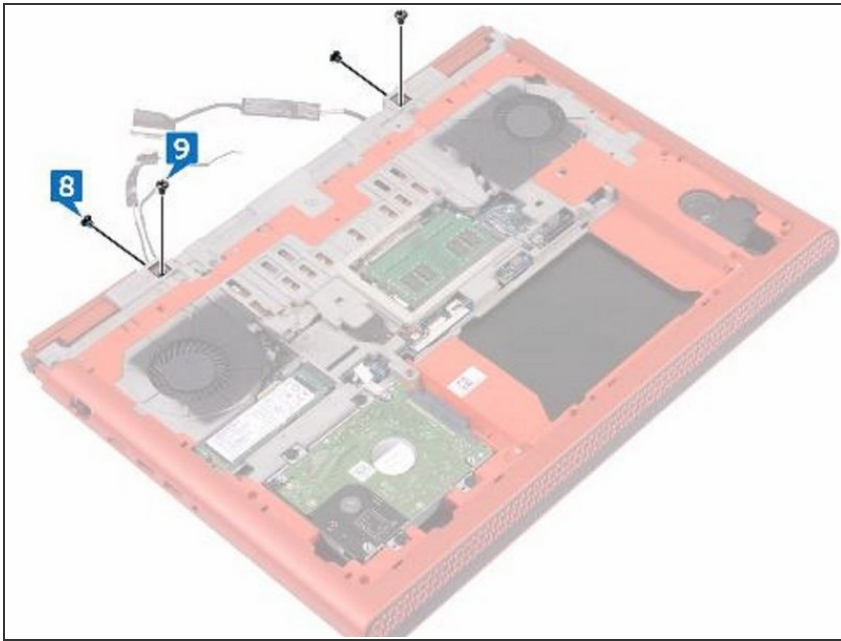
- Close the display and turn the computer over.

Step 16 — Replace the Screws



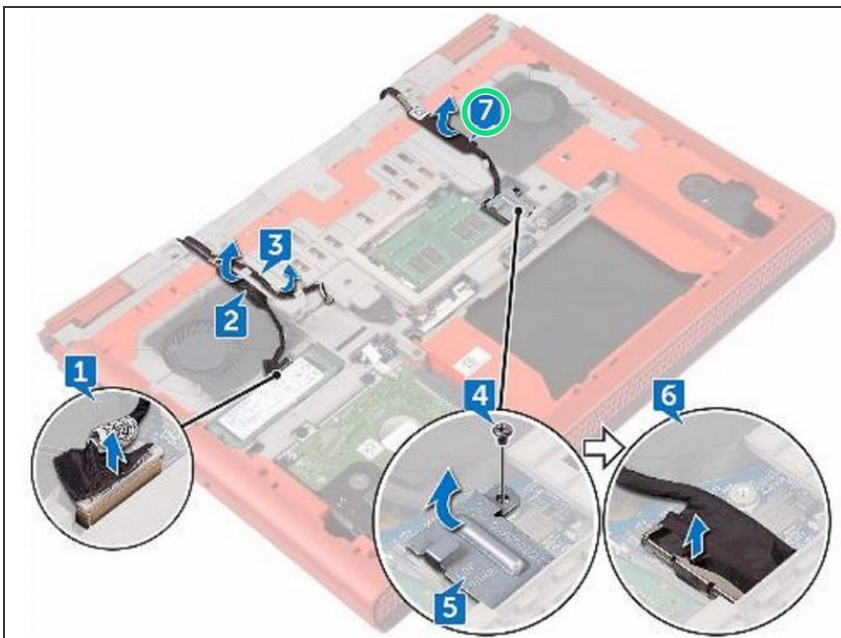
- Replace the two screws (M2x3) that secure the display assembly to the computer base.

Step 17 — Replace the Screws



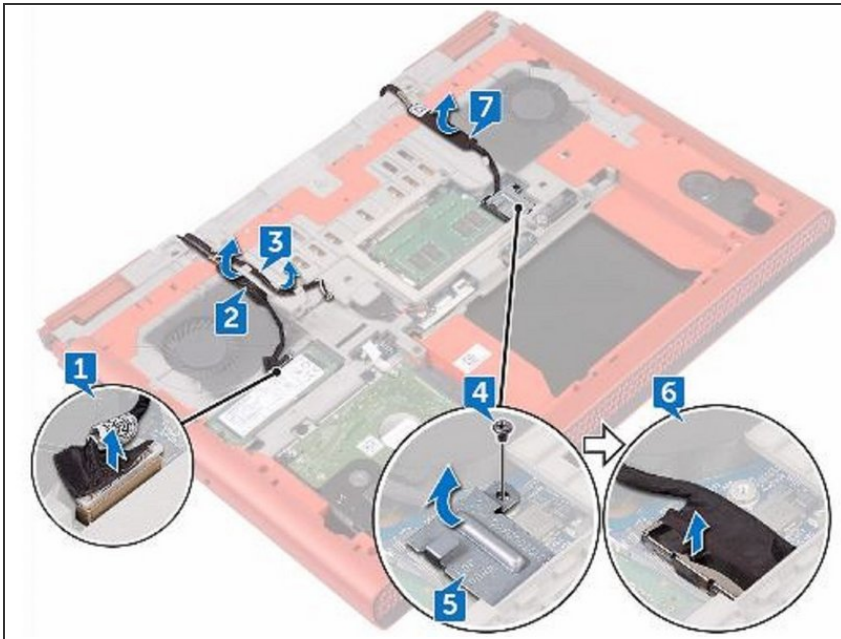
- Replace the two screws (M2.5x5) that secure the display assembly to the computer base.

Step 18 — Route the Display Cable



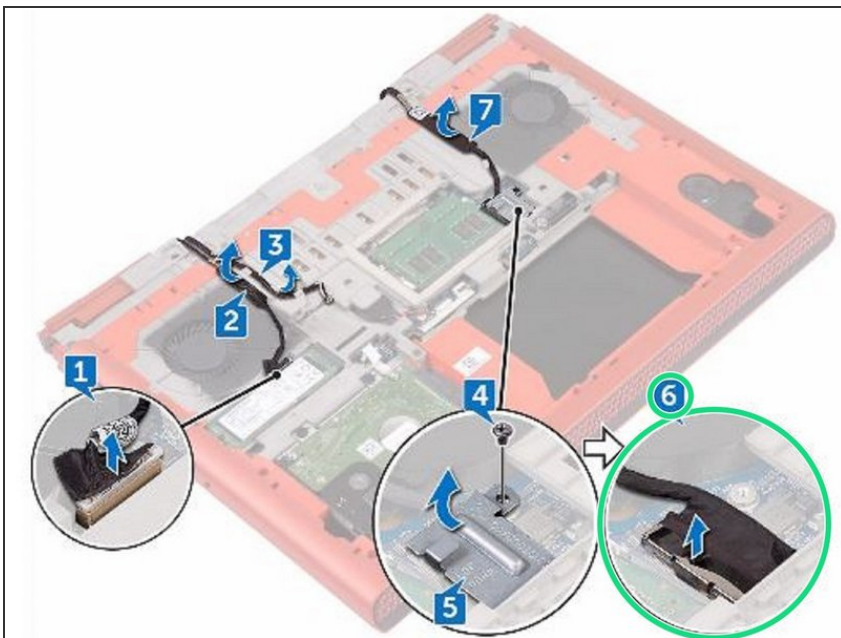
- Route the display cable through the routing guides on the computer base.

Step 19 — Adhering the Display Cable



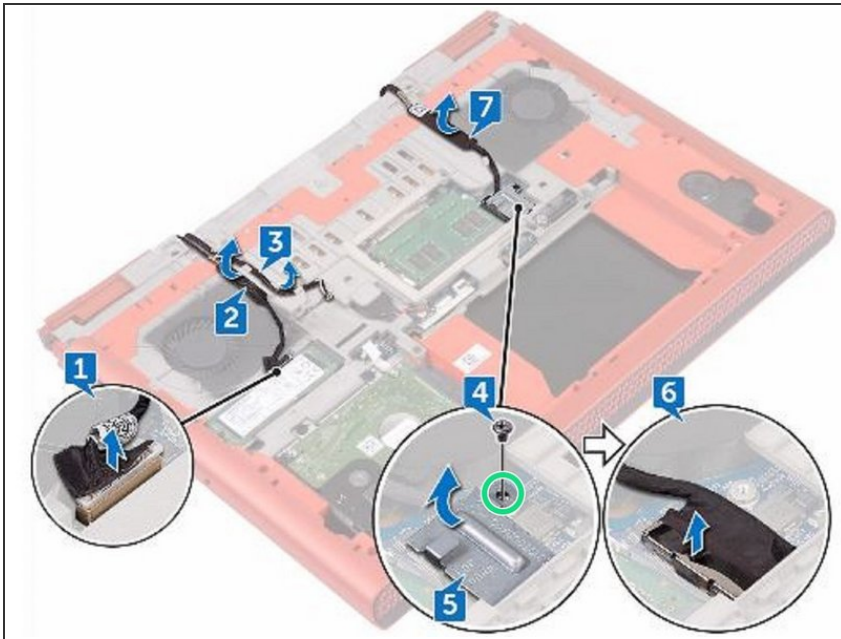
- Adhere the display cable and the camera cable to the computer base.

Step 20 — Connect the Display Cable



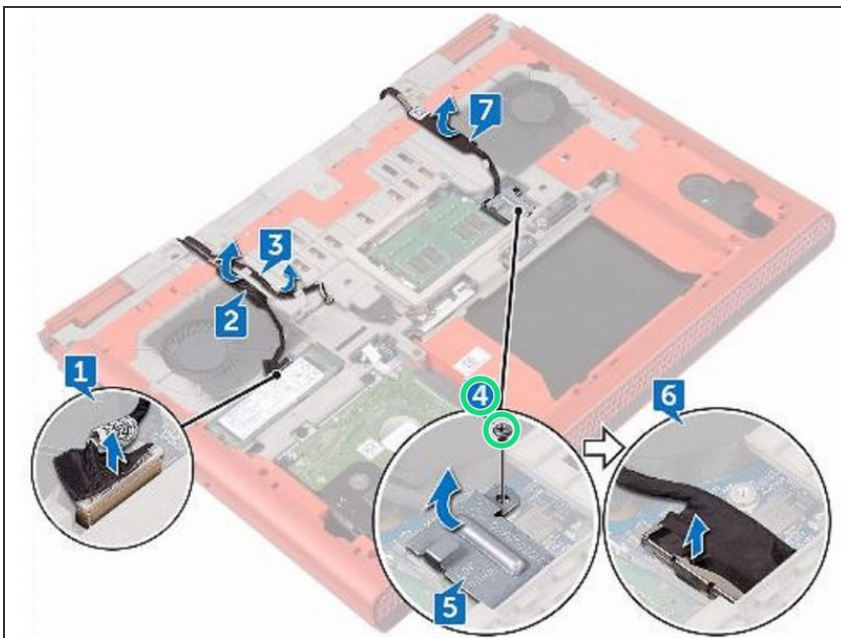
- Connect the display cable to the system board.

Step 21 — Align the Screw Hole



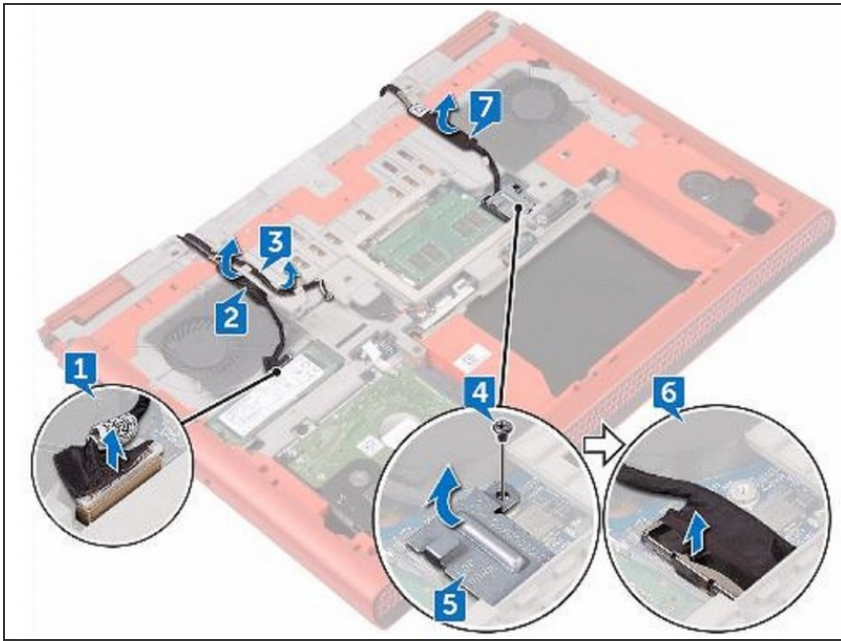
- Align the screw hole on display-cable bracket with the screw hole on the computer base.

Step 22 — Replace the Screw



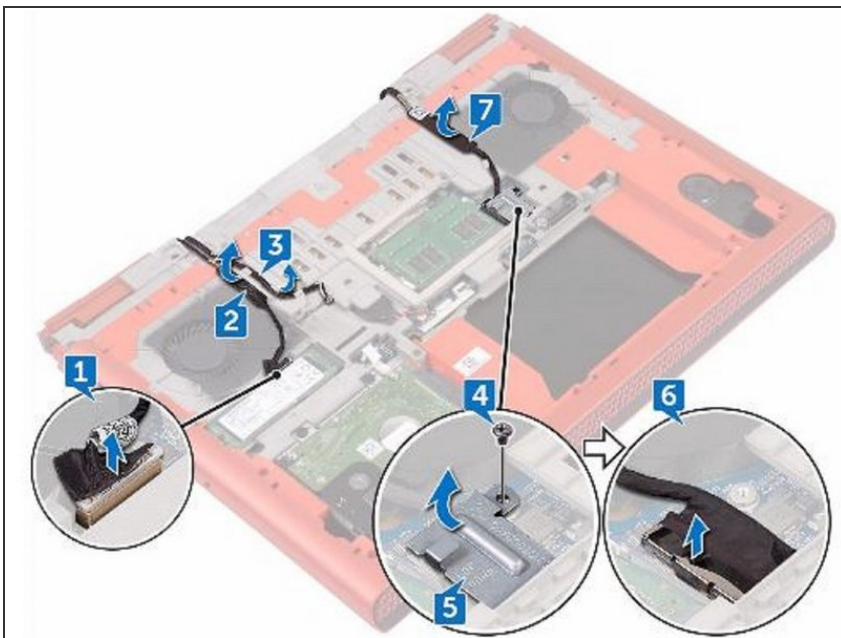
- Replace the screw (M3x3) that secures the display-cable bracket to the computer base.

Step 23 — Route the Antenna Cables



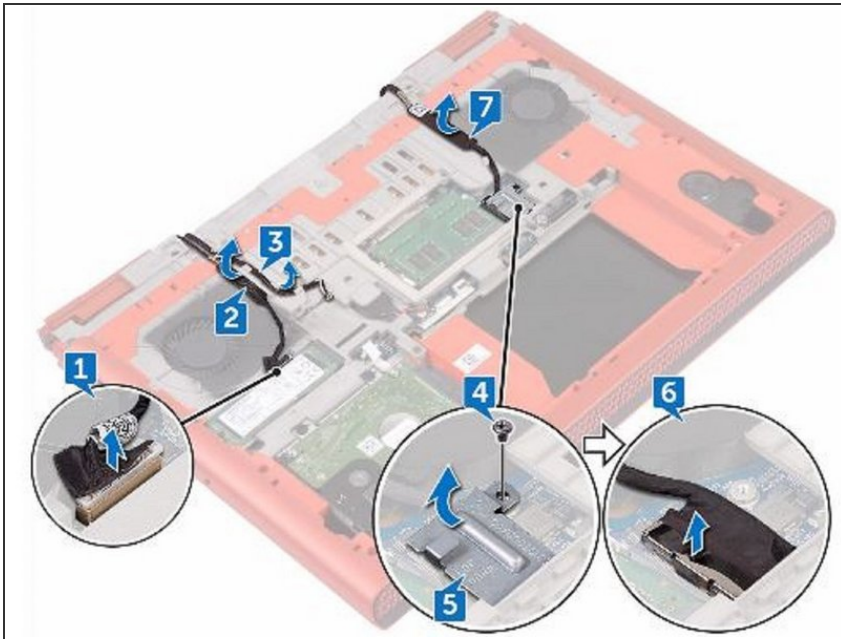
- Route the antenna cables through the routing guides on the computer base.

Step 24 — Adhering the Camera Cable



- Adhere the camera cable to the computer base.

Step 25 — Connect the Camera Cable



- Connect the camera cable to the system board.