



Mitsubishi WD57734 Back Panel Replacement

Install a new back panel in your Mitsubishi WD-57734 DLP HDTV.

Written By: Herman Chai



INTRODUCTION

Installing a new back panel in this television is straightforward and requires minimal disassembly.



TOOLS:

- [Phillips #0 Screwdriver](#) (1)
 - [Phillips #1 Screwdriver](#) (1)
 - [Phillips #2 Screwdriver](#) (1)
-

Step 1 — Lamp



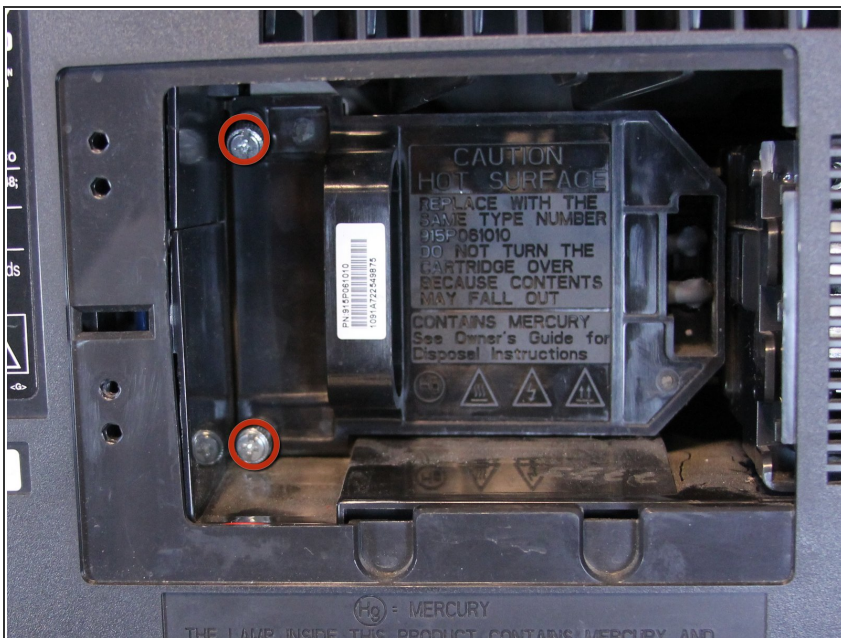
- ⓘ Before disassembling your television, be sure it is powered off and unplugged.
- Remove the single 18 mm Phillips #1 screw on the lamp access panel.

Step 2



- Pull the lamp access panel off of the back panel of the television by pulling straight back on the left side of the panel near the screw then pulling to the left.

Step 3



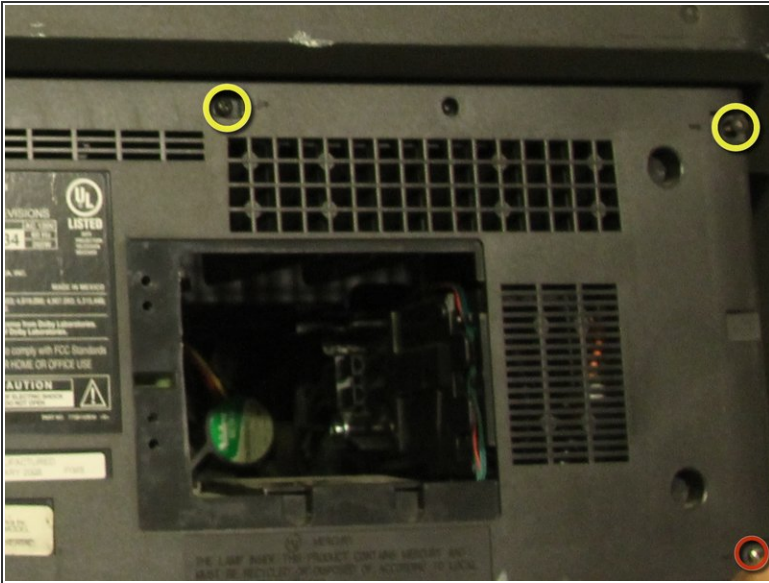
- Loosen the two Phillips #2 screws securing the lamp housing to the television until the screws will swivel vertically.
- ⓘ These two screws are permanently attached to the lamp housing and cannot be removed completely.

Step 4



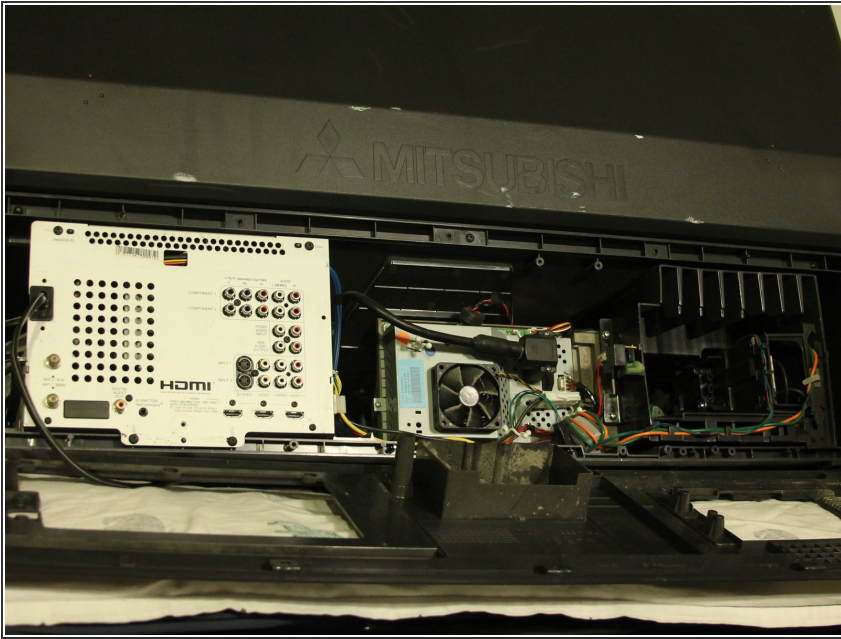
- Using the handle, pull the lamp housing straight back out of the television.
- ⚠ Do not touch the glass of the lamp with your bare hands. The oil from your fingers can distort the TV image and lead to other issues.

Step 5 — Back Panel



- Remove the following 8 Phillips #1 screws:
 - One 22 mm Phillips #1 in the bottom right corner of the back panel.
 - One 18 mm Phillips #1 in the top middle of the back panel.
 - Six 18 mm Phillips #1 in the rest of the back panel.

Step 6



- Pull the back panel off of the television by gripping the sides and rotating it down.

To reassemble your device, follow these instructions in reverse order.