



Sony SRS-X11 Bluetooth Speaker Disassembly

How to disassemble this device completely.

Written By: Hadena





TOOLS:

- [iFixit Phillips #00 Screwdriver](#) (1)
 - [Tweezers](#) (1)
 - [Spudger](#) (1)
 - [iFixit Opening Picks set of 6](#) (1)
 - [Metal Spudger](#) (1)
-

Step 1 — Tools Required



- Phillips 00 Bit
- Plastic and metal spudgers
- Plastic Pick
- Tweezers

Step 2 — Back Panel



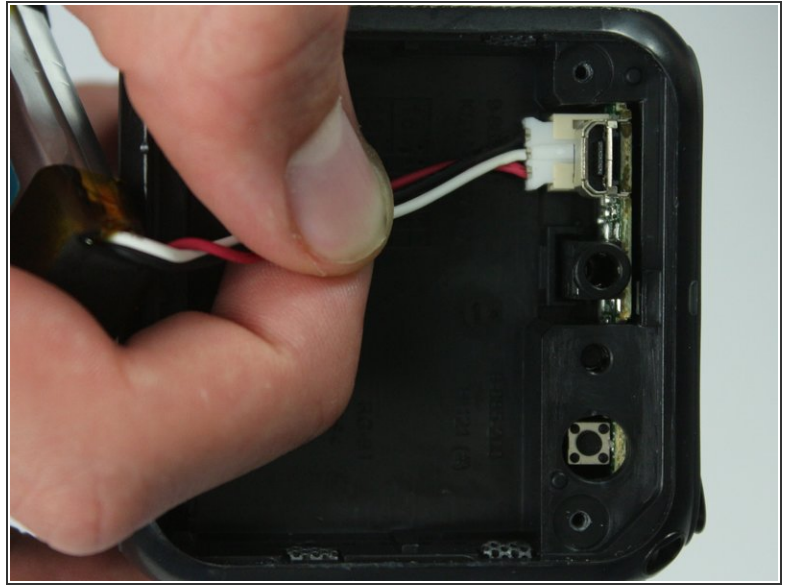
- Get one of your pry tools and pry up the back rubber.
- Then peel back the rubber and put it to one side
- ⓘ The adhesive can be a bit hard at first but it should come loose. The adhesive will also stay on the rubber and can be re applied.


Step 3 — Remove The Back Pannel



- Get your 00 Phillips bit and unscrew all of the screws.
- Then get a spudger and take off the back plastic pannel

Step 4 — Removing The Battery



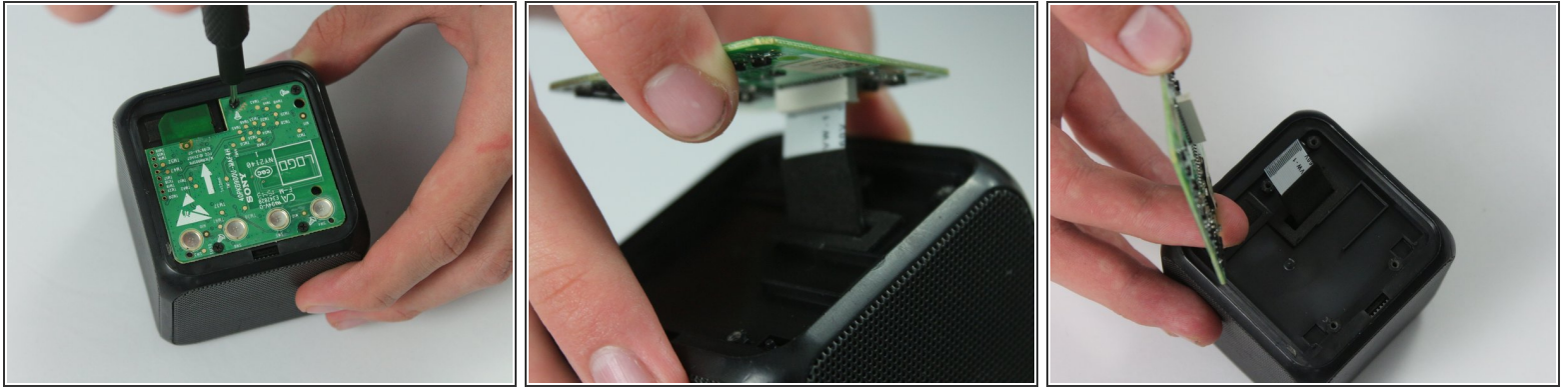
- Get a plastic spudger and carefully pry the battery out.
 - Give the power connector a firm tug whilst wiggling the connector back and forth.
 - Alternatively you could use your tweezers to pry the connector out.
-  **DO NOT** use a metal pry tool for this process because you don't want to puncture the battery.


Step 5 — Removing The Top



- Use a pry tool to remove the top cover like you did in Step 2
- Then peel back the rubber and put it to one side.
- ⓘ Just like the back cover the adhesive can be hard at first. It can also be reapplied when you reassemble.

Step 6 — Removing The Top Board



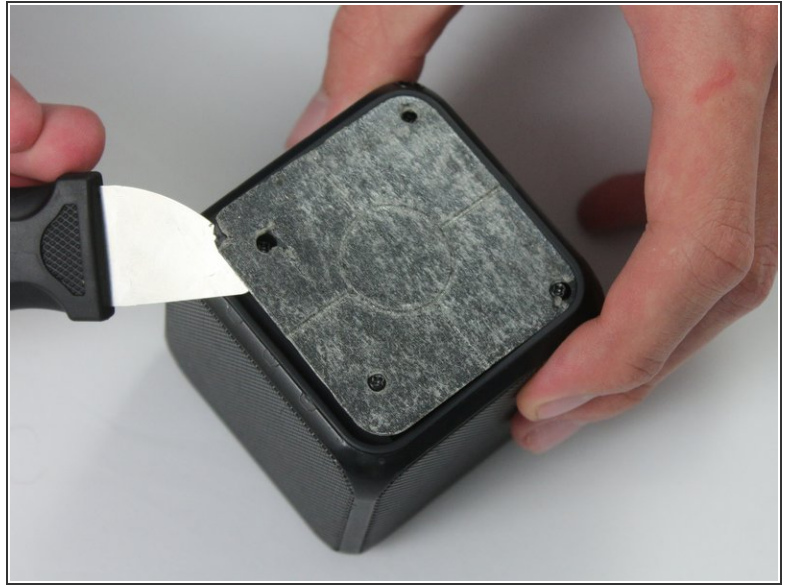
- Get your screwdriver and unscrew the screws.
 - Once all of the screws are removed you can then pull out the board.
 - You can remove the ribbon cable with your fingers or with some tweezers.
-  The screws for the top panel are different so you'll want to keep them separate.

Step 7 — Removing The Bottom Panel



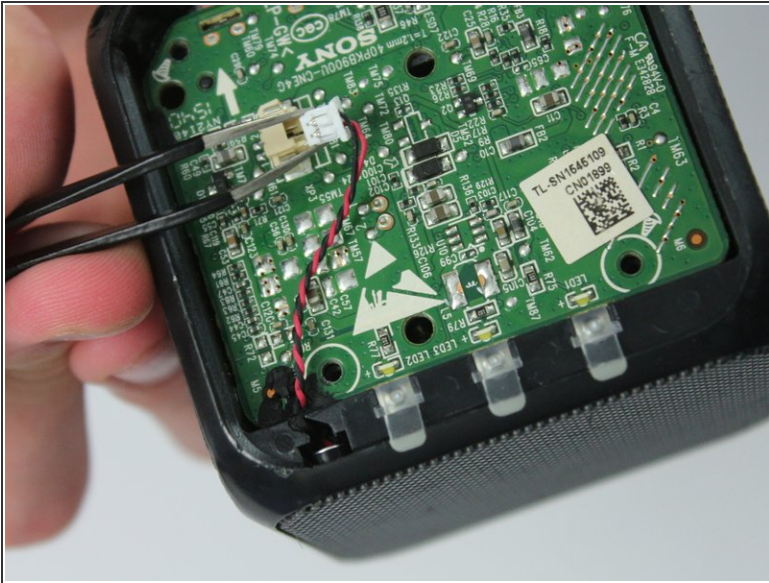
- Get a metal pry tool and get it between the rubber and the plastic.
- Once you have a good piece preys up you can remove it with your hand.
- ⓘ This will deform the plastic a little bit but you can re-adhere this to the plastic underneath.

Step 8 — Removing The Bottom Panel



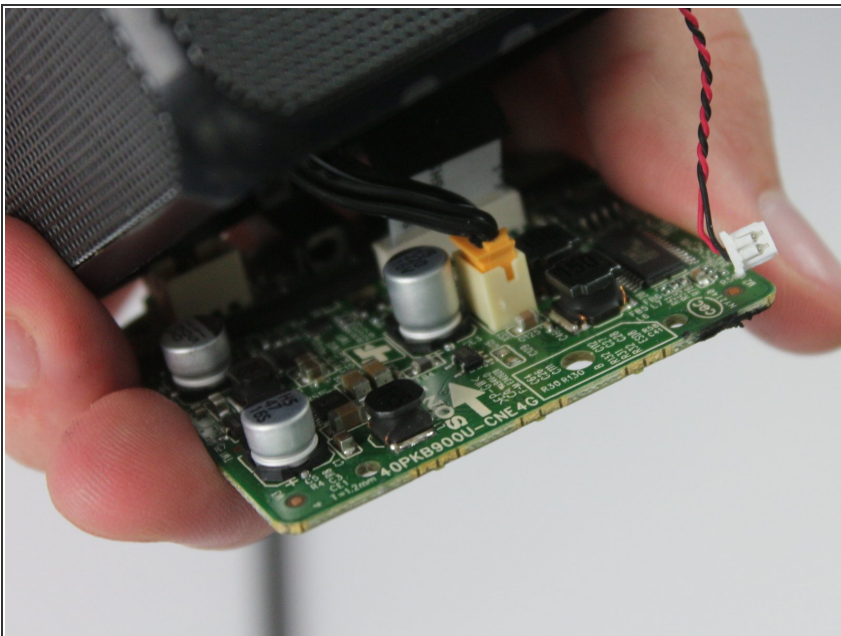
- Get your screwdriver and unscrew all of the screws.
- You can the get a pry tool and pry up the plastic panel.
- ⓘ If the panel doesn't come off completely try unscrewing the screws a little more until the plastic panel comes off with the rubber.

Step 9 — Removing The Bottom Board



- Get your tweezers and pry off the connector being careful not to tear the cable.
- You can then get a plastic pry tool and put it in one of the corners of the board to pry it up and out of the casing.

Step 10 — Removing connectors



- You can then remove the speaker cable and the top board cable.

To reassemble your device, follow these instructions in reverse order.