



Nook Tablet Display Replacement

This guide will show easy ways to access the...

Written By: Michael Mooney



INTRODUCTION

This guide will show easy ways to access the nook tablet visual display, replace the screen or reconnect the display if it is not working properly.

TOOLS:

[6-in-1 Screwdriver](#) (1)

[T5 Torx Screwdriver](#) (1)

Step 1 — Back Cover



- Flip the Nook over.

Step 2



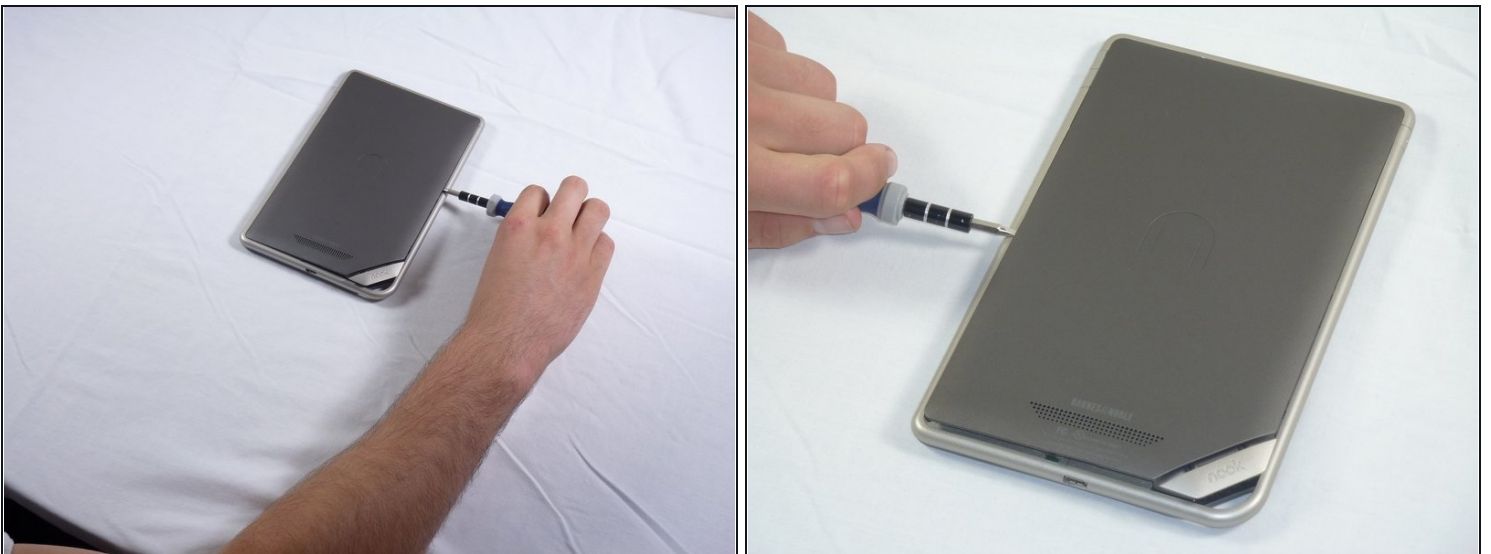
- Lift the flap that reads "Nook" to reveal the tape that is underneath. Remove the memory card if one is present.
- Remove the tape covering the round holes to reveal two T5 Torx screws.
- Remove the two T5 Torx screws securing the back cover.

Step 3



- Insert the flat end of a spudger between the front panel and the rear assembly.
 - ① Though these photos show a screwdriver, use a spudger or plastic opening tool in order to prevent damage to the device.
- Use a spudger to lift the the back panel from the rest of the Nook.

Step 4



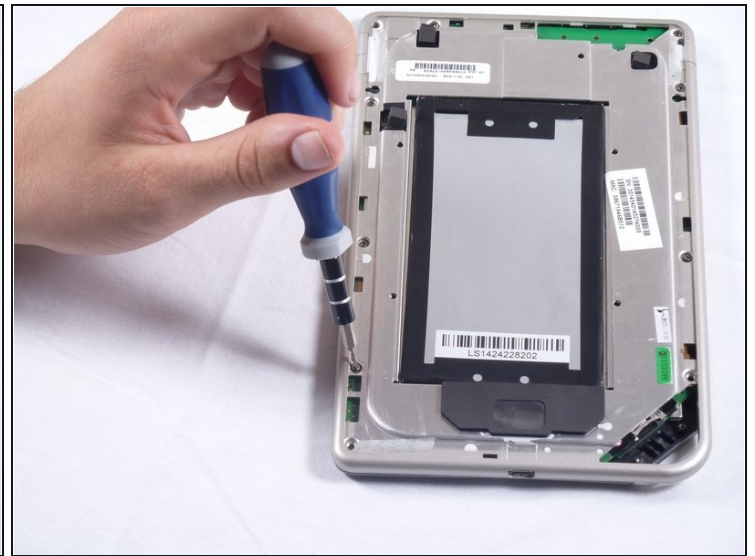
- Slide the spudger around the edges of the Nook to loosen the back panel.

Step 5



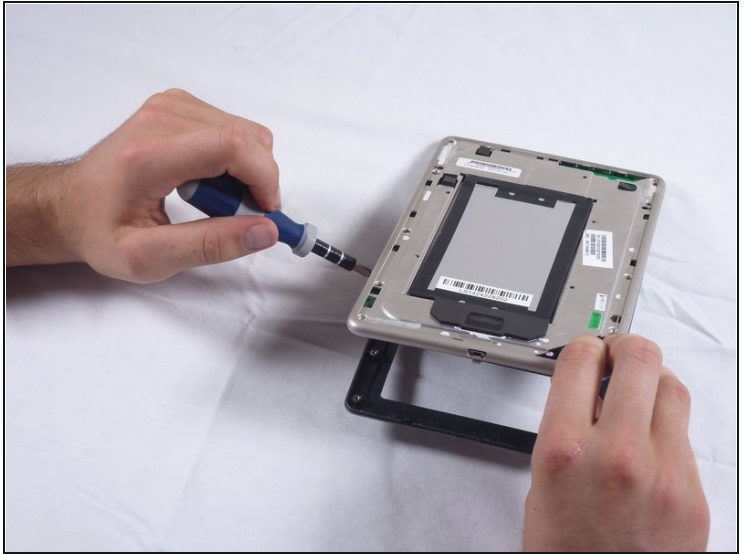
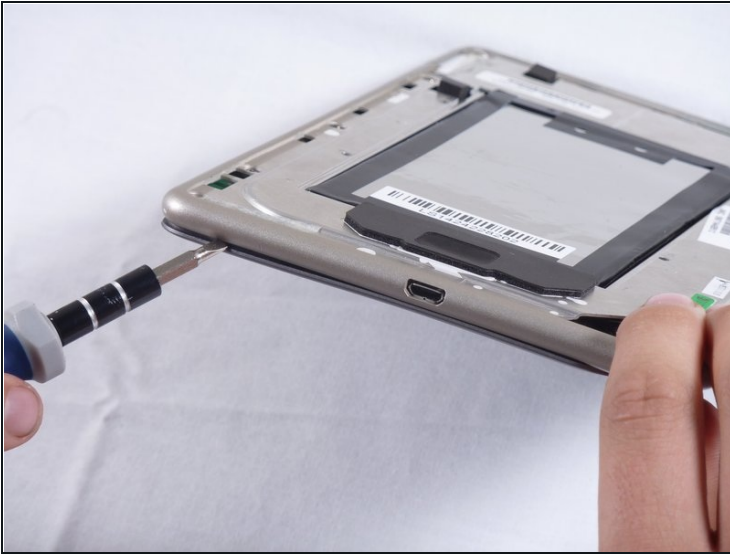
- Pull the back panel off the Nook.

Step 6 — Screen Bezel



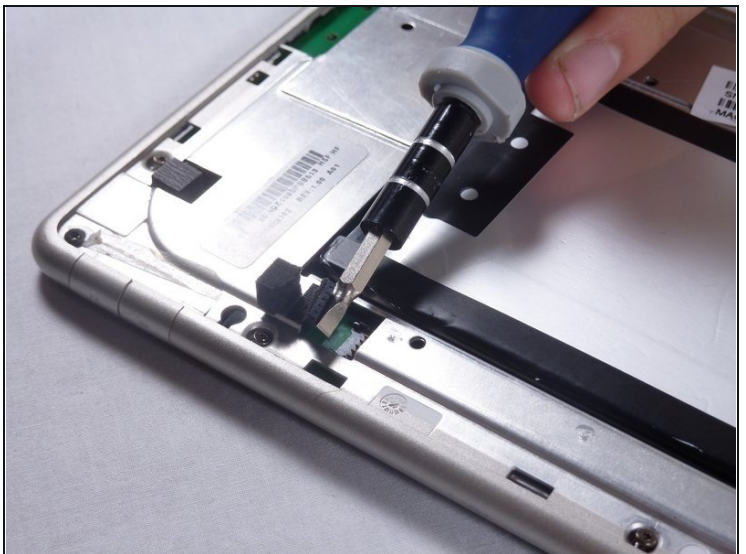
- Using the T5 Torx screwdriver, remove the ten T5 screws from around the edges of the silver midframe.

Step 7



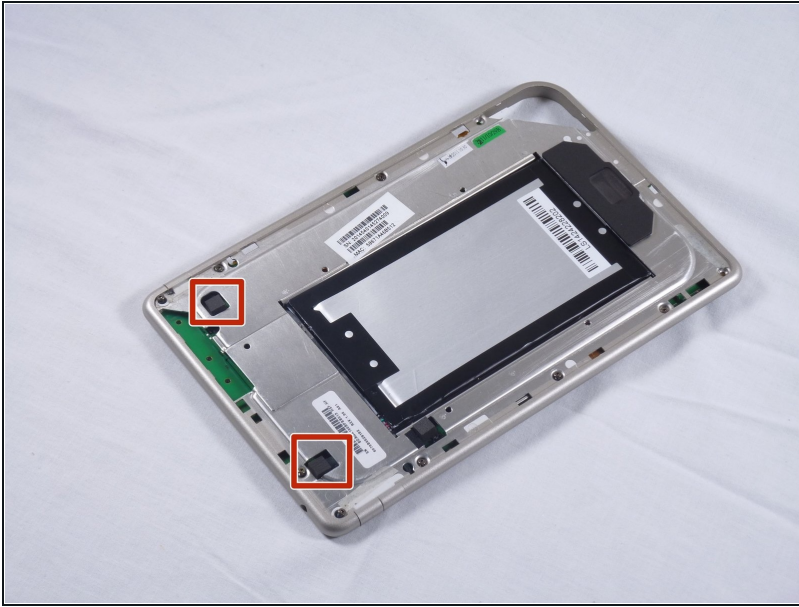
- Using a spudger or plastic opening tool, carefully pry the screen bezel away from the silver midframe.

Step 8 — Disconnect the Battery



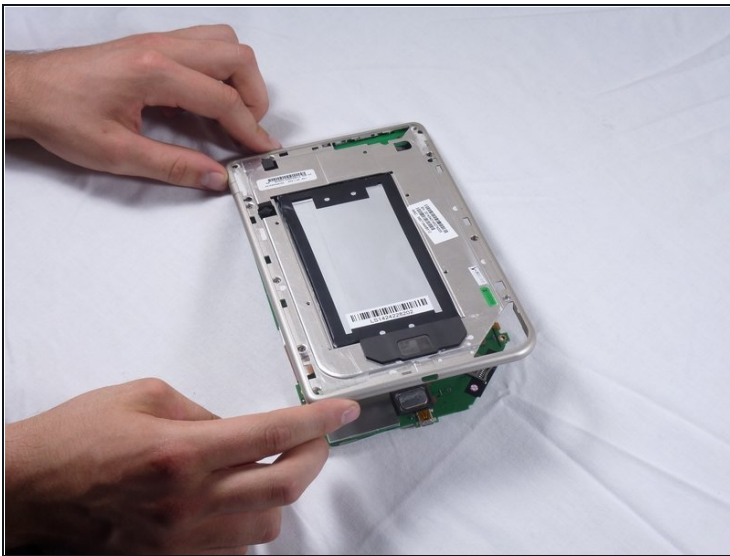
- Lift up the foam pad at the corner of the battery to reveal the battery connector.
 - Use a spudger or plastic opening tool to disconnect the battery cable from the motherboard.
- ⚠ These photos show a screwdriver, but we recommend using a nonconductive tool like a spudger to prevent a potential short.

Step 9 — Midframe



- Lift up the foam that covers the power connector and volume connector.
- Disconnect the power and volume cables from their sockets on the motherboard.

Step 10



- Carefully lift the silver midframe away from the motherboard and display assembly.

⚠ Be careful when handling the motherboard, making sure to not dislodge/shift any of its major components.

Step 11 — Display



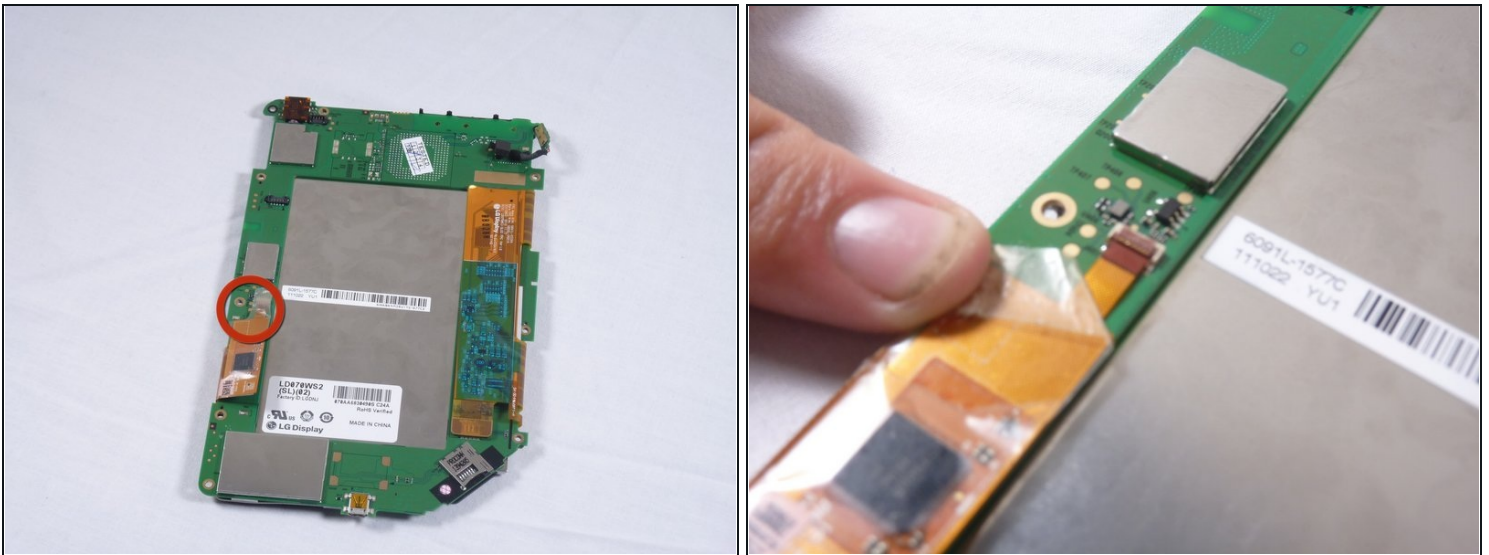
- Orient the mother board as shown, so that the screen is facing downwards.
- Grab the corner of the orange strip on the right side of the mother board as shown.
- The orange strip is adhered to the mother board, gently lift the strip so that the adhesion is broken.
- The strip will still be attached by the circuit connection to the mother board, proceed to the next step.

Step 12



- The orange strip will still be attached at this point
- Insert the end of a flat head screw driver between the connection of the strip and mother board and pry upward.
- Grab the strip and gently pull upward to finish the disconnection.

Step 13



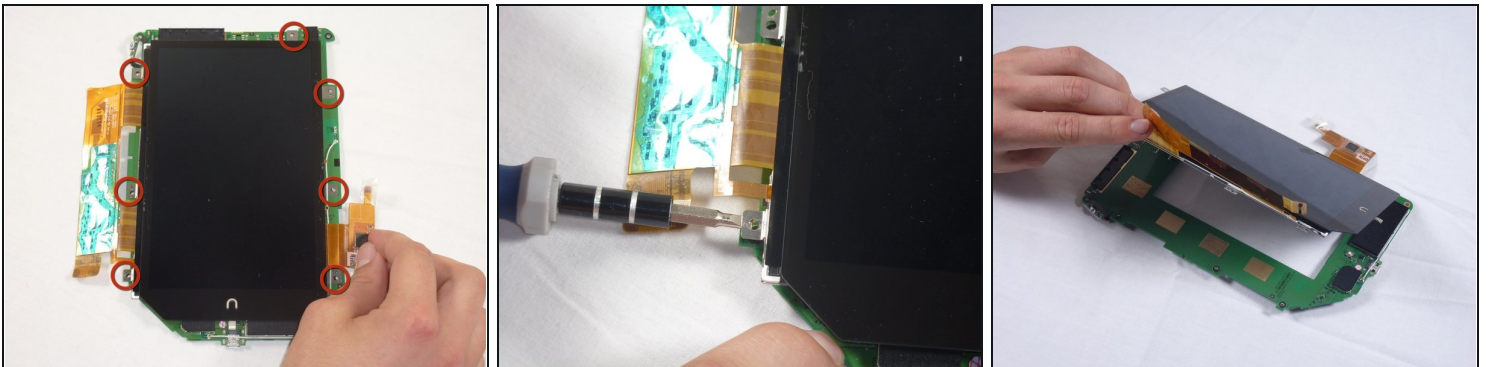
- On the left side of the motherboard, you will see another orange strip, this one is taped down to the motherboard.
- Remove the tape.

Step 14



- After the tape has been removed, the strip will still be attached to the motherboard by the hinge pictured here.
- Slide the tip of a flat head screwdriver under the hinge and pry the hinge upward.
- The orange strip should now be detached from the mother board.

Step 15



- The screen is adhered to the mother board at the screw holes marked
- Break the adhesion by inserting the edge of a flat head screwdriver inbetween the motherboard and the pieces of the screen at the marked holes
- Lift the screen from the display.

To reassemble your device, follow these instructions in reverse order.