



Google Pixelbook Display Replacement

The display on the Google Pixelbook is secured...

Written By: Blake Klein



INTRODUCTION

The display on the Google Pixelbook is secured with strong adhesive and requires some careful prying to separate it from the case. Using heat from a hairdryer, or an iOpener, may help soften the adhesive for easier removal.

TOOLS:

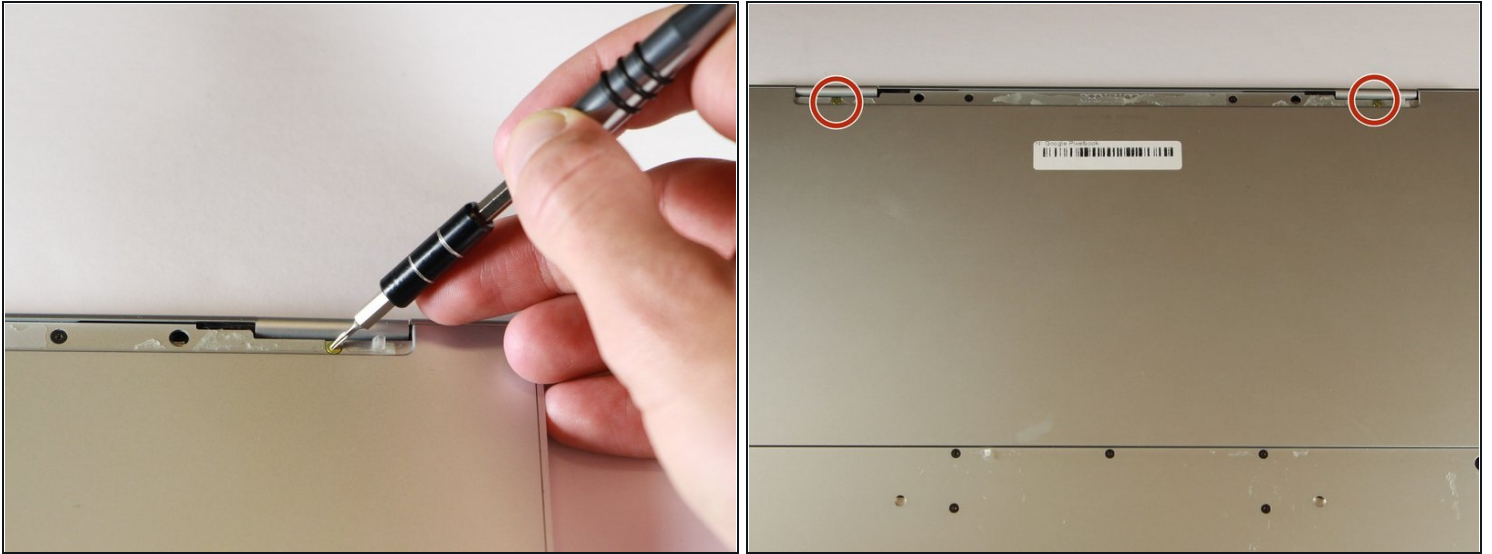
[iFixit Opening Tool](#) (1)
[Metal Spudger \(optional\)](#) (1)
[T3 Torx Screwdriver](#) (1)
[T5 Torx Screwdriver](#) (1)
[Spudger](#) (1)
[iSclack](#) (1)
[iFixit Opening Picks \(Set of 6\)](#) (1)

Step 1 — Battery (Back Panel)



- Use the iFixit opening tools or a metal spudger to pry the rubber covers off the back of your Pixelbook.
- Peel the linings off completely until the back of the Pixelbook looks bare.

Step 2



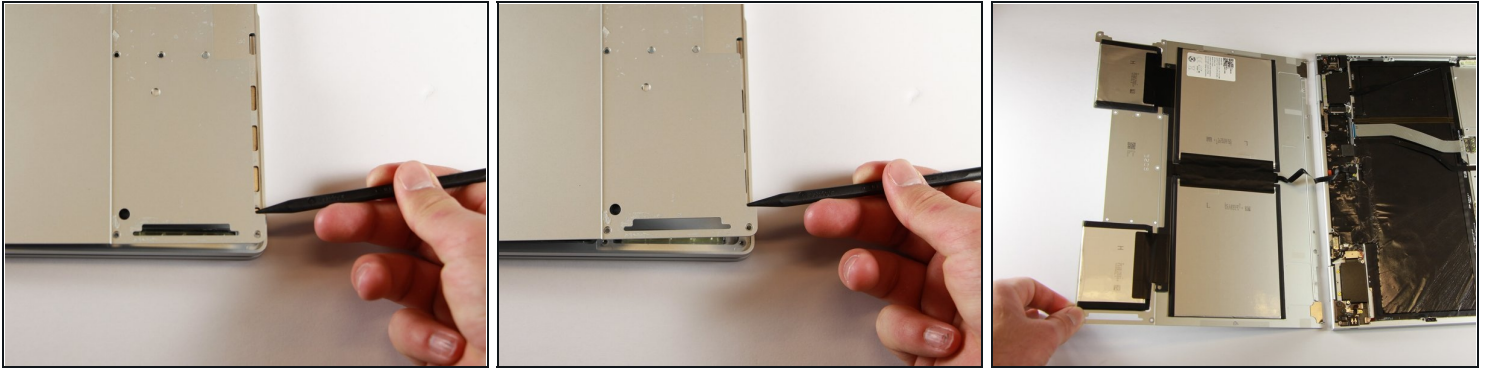
- Remove the two yellow 2.0mm screws by using a T3 Torx screwdriver.

Step 3



- Remove the seventeen 3.0mm T5 Torx screws from the bottom panel.

Step 4



- Use the nylon spudger to pry the edge of the Pixelbook up until you can grab the edge with your fingers.
- Open the back panel completely and lay it flat so you see the whole inside of the computer.

Step 5



- Remove the yellow 2.0mm screw from the middle of the panel by using the T3 Torx screwdriver to turn the screw counterclockwise.

Step 6



- Remove the small, black casing by using the spudger to lift it up from its place.

Step 7



- Disconnect the flat, black cord from the main component by using a spudger to push it out of the slot, or by using your hand to carefully pull it out.
- Your back panel is now free from the main component.

Step 8 — Display Board



- Use an iSclack, or suction cup, to lift up the corner of the display from the case.

Step 9



- Insert an opening pick into the gap between the display and case.
- Repeat this procedure on other side.

Step 10



- Using an opening pick, slowly pry up on the display until it separates.

⚠ Don't completely remove the display as ribbon cables connect it to the case.

Step 11



- Use the pointed end of spudger to flip up the small locking flap on the [ZIF](#) connector.
- Remove the display ribbon cable from the socket.

Step 12



- Use the pointed end of a spudger to flip up the small locking flap on the [ZIF](#) connector.
- Remove the display ribbon cable from the socket.

Step 13



- Flip the display over and lay it flat on the keyboard.

Step 14



- Use a pair of [tweezers](#) to grab the clip on the [display connector](#) and swing it over to the other side of the socket.
- Pull on the clip to disconnect the display.
- Remove the display.

To reassemble your device, follow these instructions in reverse order.