



# Altec Lansing BoomJacket 2 Disassembly

This guide will show you how to disassemble your BoomJacket 2.

Written By: Zach Braaten



# INTRODUCTION

After completing this guide you will be ready to repair or replace any of the components inside your device.



## TOOLS:

- [Phillips #1 Screwdriver](#) (1)  
PH1
- [Tweezers](#) (1)
- [Metal Spudger](#) (1)



## PARTS:

- [4mm x 12mm screw](#) (6)  
Phillips Head
- [Rubber Stopper](#) (6)  
*A rubber plug that keeps the screw sealed*

## Step 1 — Altec Lansing BoomJacket 2 Disassembly



- Starting from any side, use your fingers to grab the black rubber sleeve and gently pull away from the speaker on both sides.

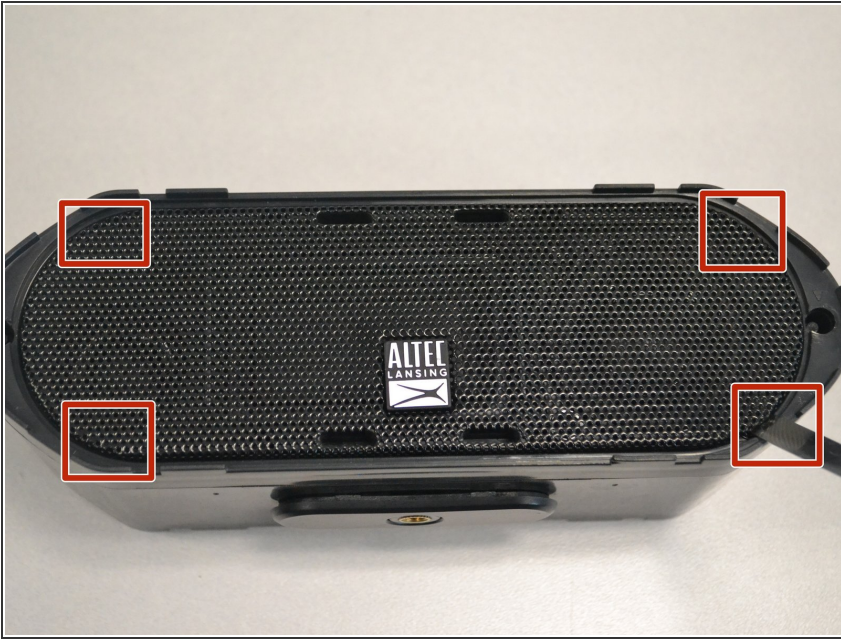
## Step 2



- Using your fingers, grab the blue sleeve from one side and pull away from the unit.



### Step 3



- At each of the marked pry spots, use the metal spudger to lift the speaker grill away from the case.

⚠ Avoid using excessive force to prevent bending the grill.

### Step 4



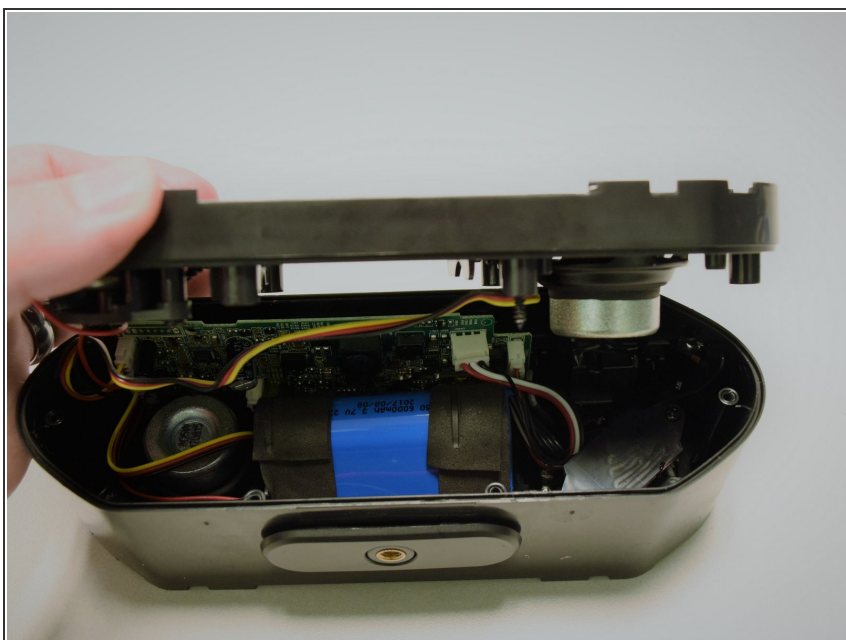
- Use the tweezers to remove the six rubber stoppers. There are four in the middle and two on the sides.

## Step 5



- Use the PH1 Phillips screwdriver to remove the six 12mm screws that lie underneath each rubber stopper.

## Step 6



- Gently pull apart the front panel from the base of the speaker.

To reassemble your device, follow these instructions in reverse order.