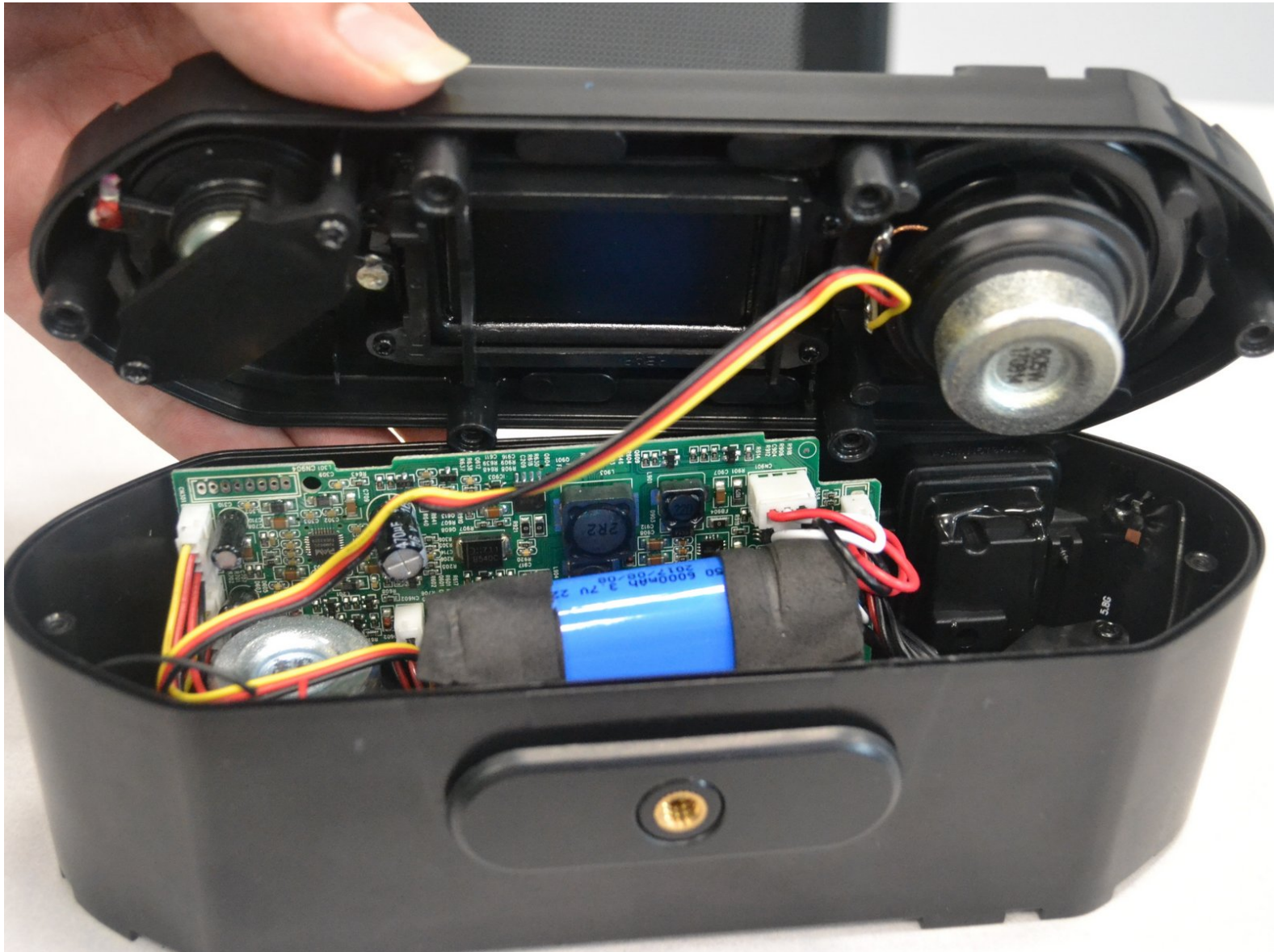




Altec Lansing BoomJacket 2 Battery Replacement

How to replace your Altec Lansing BoomJacket 2 battery.

Written By: Zach Braaten



INTRODUCTION

If your BoomJacket 2 loses charge rapidly, or fails to charge at all consider replacing the battery.



TOOLS:

- [Phillips #1 Screwdriver](#) (1)
PH1
- [Tweezers](#) (1)
- [Metal Spudger](#) (1)



PARTS:

- [4mm x 12mm screw](#) (6)
Phillips Head
- [Rubber Stopper](#) (6)
A rubber plug that keeps the screw sealed

Step 1 — Altec Lansing BoomJacket 2 Disassembly



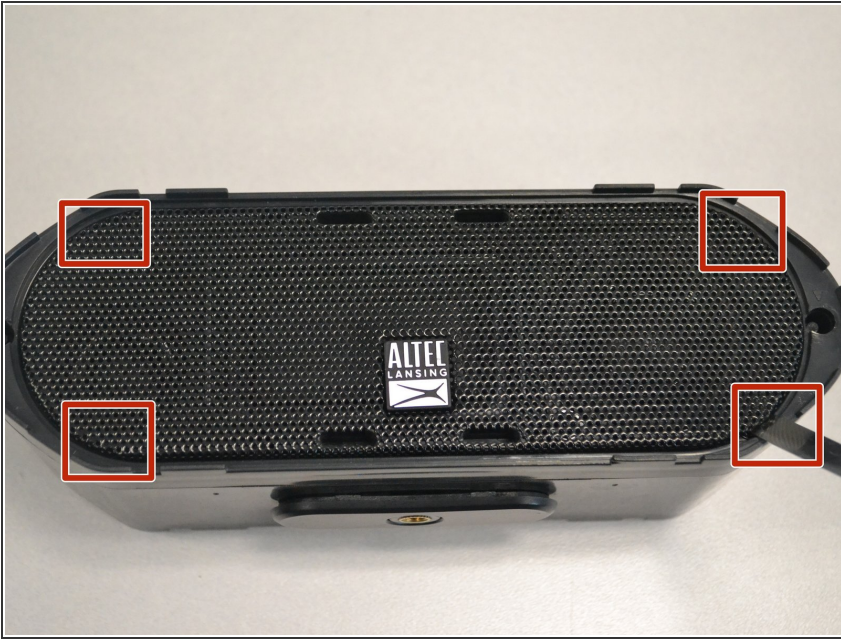
- Starting from any side, use your fingers to grab the black rubber sleeve and gently pull away from the speaker on both sides.

Step 2



- Using your fingers, grab the blue sleeve from one side and pull away from the unit.

Step 3



- At each of the marked pry spots, use the metal spudger to lift the speaker grill away from the case.

⚠ Avoid using excessive force to prevent bending the grill.

Step 4



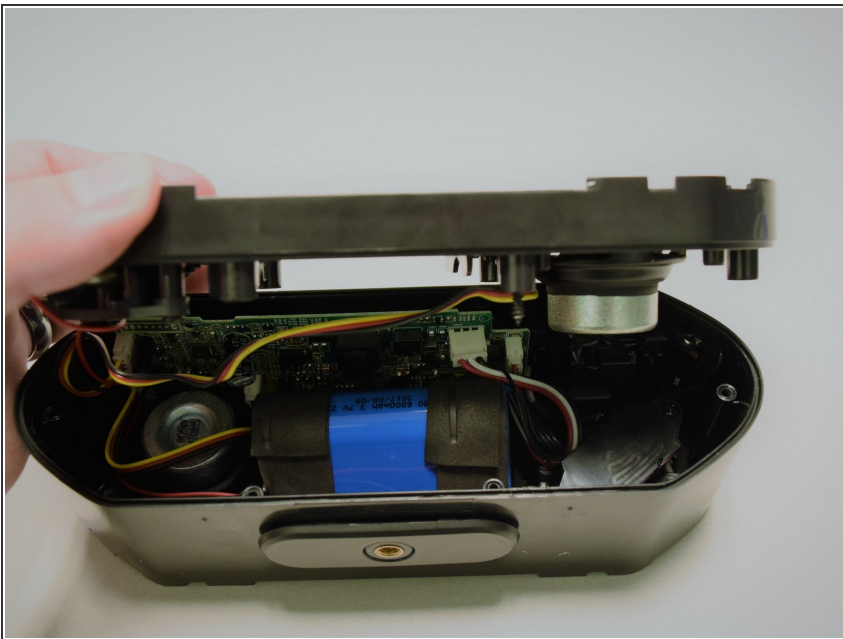
- Use the tweezers to remove the six rubber stoppers. There are four in the middle and two on the sides.

Step 5



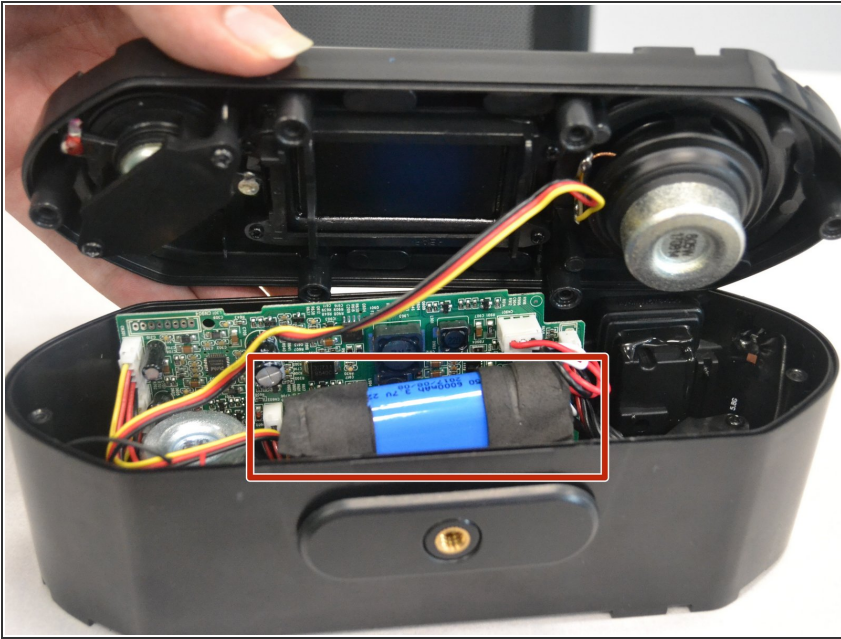
- Use the PH1 Phillips screwdriver to remove the six 12mm screws that lie underneath each rubber stopper.

Step 6



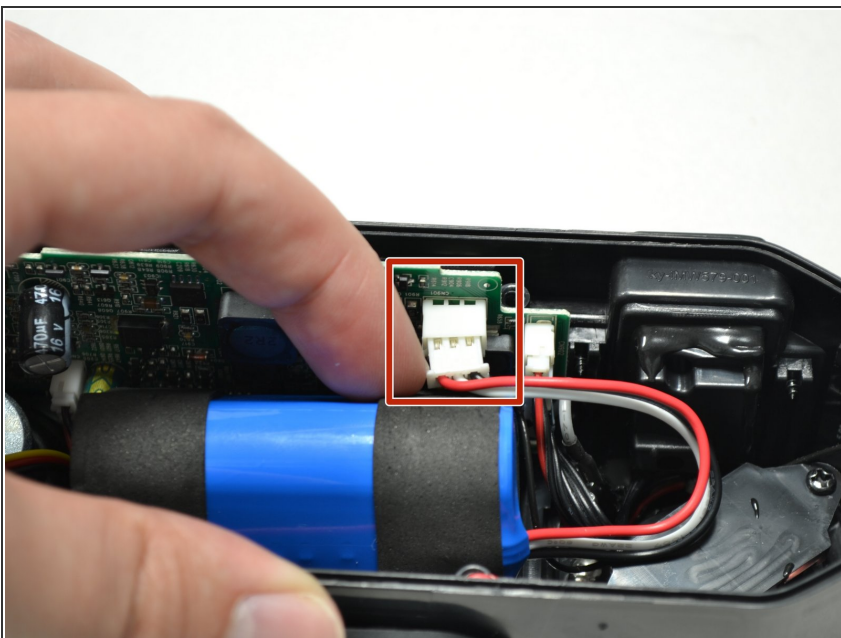
- Gently pull apart the front panel from the base of the speaker.

Step 7 — Battery



- The battery will be in the middle of the speaker when the case is open.

Step 8



- Pull firmly from both sides of the pin to disconnect the battery cable from the motherboard.
 - Pull battery up and away from speaker without catching any other components.
- ⚠ Motherboards have fragile components and can easily be damaged if they are hit or pulled on while extracting other parts.

To reassemble your device, follow these instructions in reverse order.