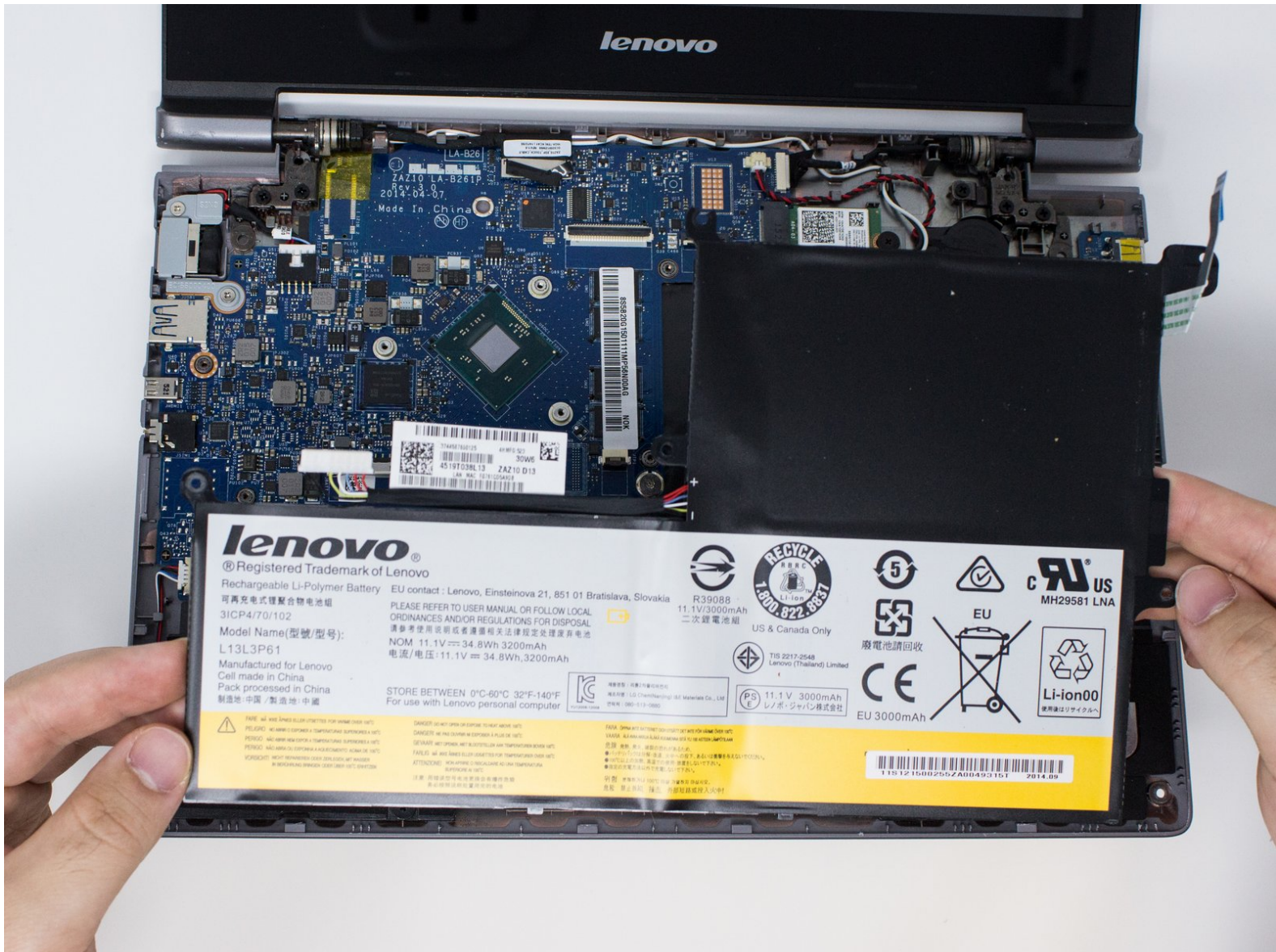




# Lenovo N20p Chromebook Battery Replacement

Replace a faulty battery in the Lenovo N20p Chromebook.

Written By: Shihao Cao



---

## INTRODUCTION

After a period of time or use, the battery may have issues and lose power after a charge. This guide will explain how to remove the battery from the Lenovo N20p Chromebook.

---

### TOOLS:

- [Spudger](#) (1)
  - [Metal Spudger](#) (1)
  - [Phillips #0 Screwdriver](#) (1)
  - [Phillips #00 Screwdriver](#) (1)
-

## Step 1 — Keyboard



- ⚠ Power down the Chromebook before starting any repair.
- Remove the two 3.5 mm Phillips #0 screws using a screwdriver.
- ℹ It is only necessary to remove these two screws to complete this step.



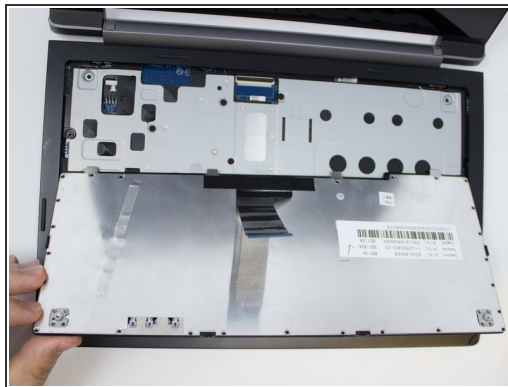
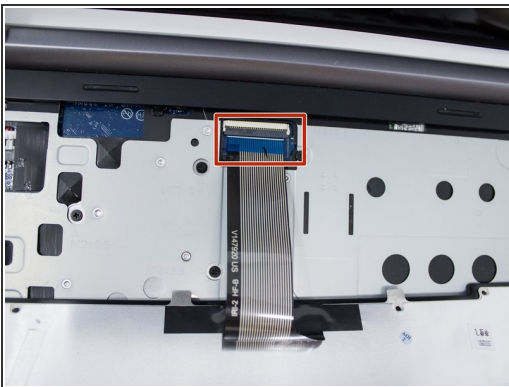
## Step 2



- Use the hook of the metal spudger to carefully lift up the keyboard.

⚠ Lift the keyboard carefully. If you lift too quickly, it might break the two cables that connect the keyboard to the motherboard.

## Step 3



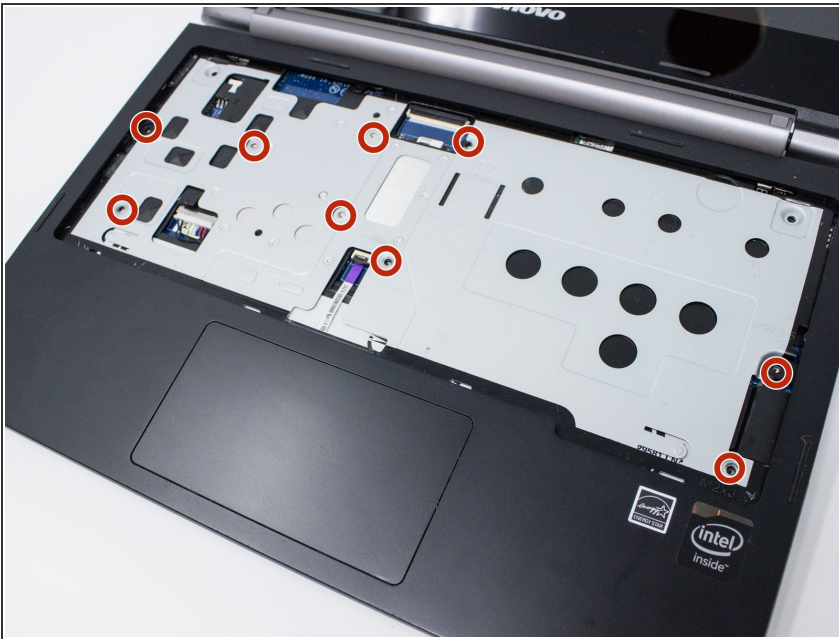
- Carefully, disconnect the keyboard cable from the motherboard carefully by pulling on the blue tab of the cable.
- You will now be able to replace the keyboard.

## Step 4 — Battery



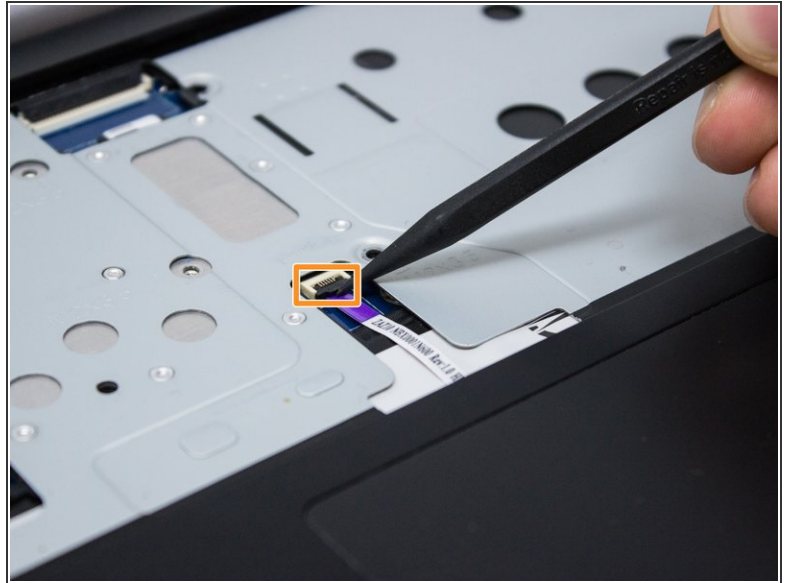
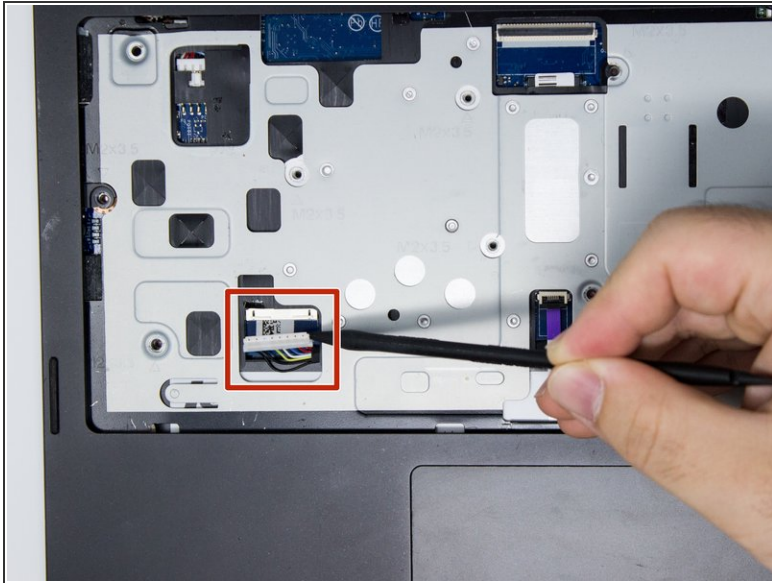
- Remove the two rubber feet of the back of the Chromebook using a metal spudger.
- Remove six bottom 3.5 mm Phillips #0 screws and two top 5 mm Phillips #1 screws.

## Step 5



- Remove all nine 3.5 mm Phillips #00 screws using a screwdriver.

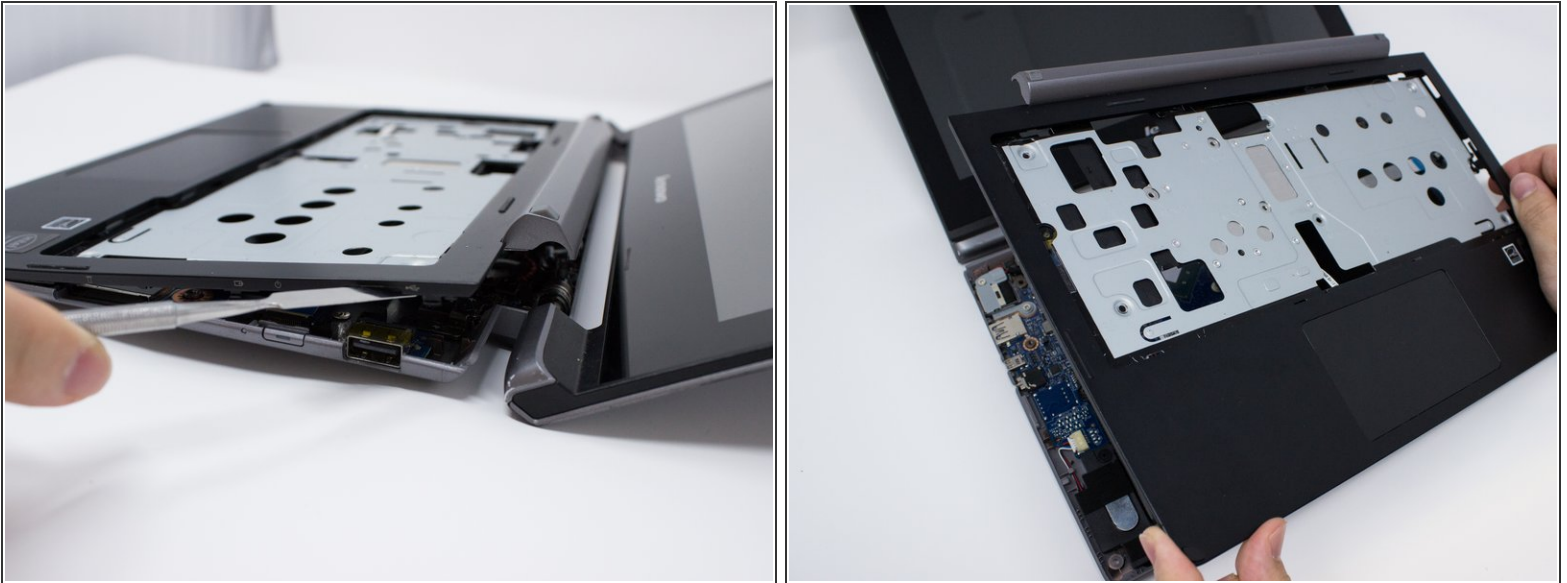
## Step 6



- Disconnect the battery cable from the motherboard.
- Disconnect the touch-pad cable from the motherboard.



## Step 7



- Use the metal spudger along the seam between the keyboard and the bottom of the Chromebook to lift up and remove the palm rest assembly.
- ⓘ It is normal for it to click loudly when it is released. Corner tags will be harder to release than other tags and will make a loud sound.

## Step 8



- Disconnect the USB cable from the motherboard by pulling the blue tab out of the cable.
- Remove all five 3.0 mm Phillips #00 screws which connect the battery and motherboard.

## Step 9



- Remove the battery.
- ❗ It is helpful to lift and hold the battery as shown.

To reassemble your device, follow these instructions in reverse order.