



Lenovo N20p Chromebook WLAN & Bluetooth Replacement

Are you experiencing difficulty connecting to the internet? Try replacing your WLAN & Bluetooth.

Written By: Shihao Cao



INTRODUCTION

This guide shows how to replace the WLAN & Bluetooth for the Lenovo N20p Chromebook. The guide shows how to remove the back panel, and remove the screws holding the WLAN & Bluetooth in place.






TOOLS:

- [Phillips #00 Screwdriver](#) (1)
 - [Spudger](#) (1)
 - [Metal Spudger](#) (1)
 - [Phillips #0 Screwdriver](#) (1)
 - [Phillips #1 Screwdriver](#) (1)
-

Step 1 — Keyboard



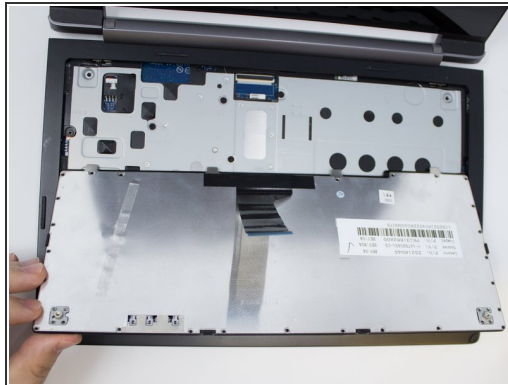
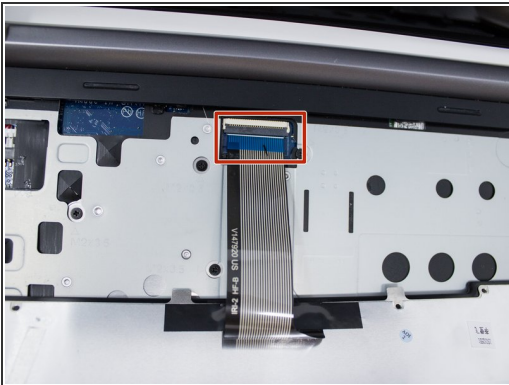
-  Power down the Chromebook before starting any repair.
-  Remove the two 3.5 mm Phillips #0 screws using a screwdriver.
-  It is only necessary to remove these two screws to complete this step.

Step 2



- Use the hook of the metal spudger to carefully lift up the keyboard.
- ⚠ Lift the keyboard carefully. If you lift too quickly, it might break the two cables that connect the keyboard to the motherboard.

Step 3



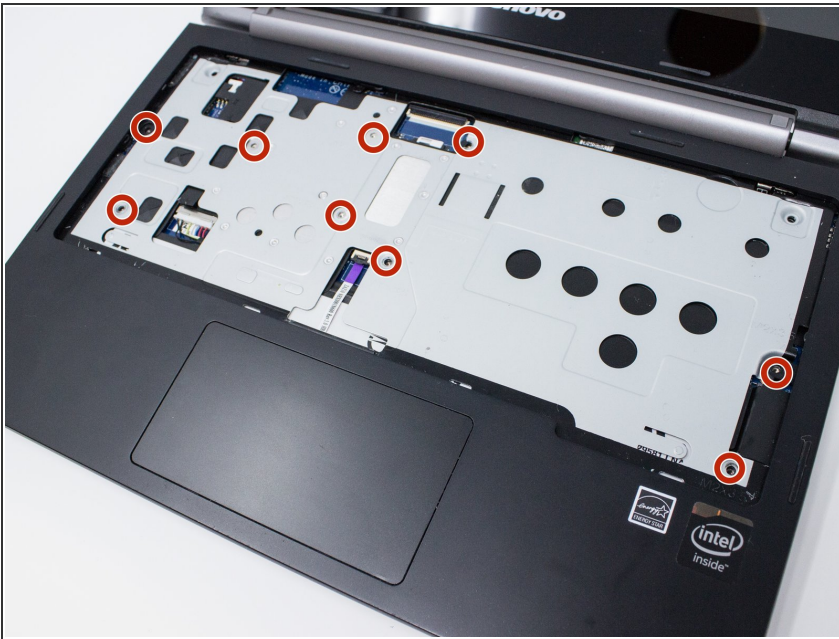
- Carefully, disconnect the keyboard cable from the motherboard carefully by pulling on the blue tab of the cable.
- You will now be able to replace the keyboard.

Step 4 — Battery



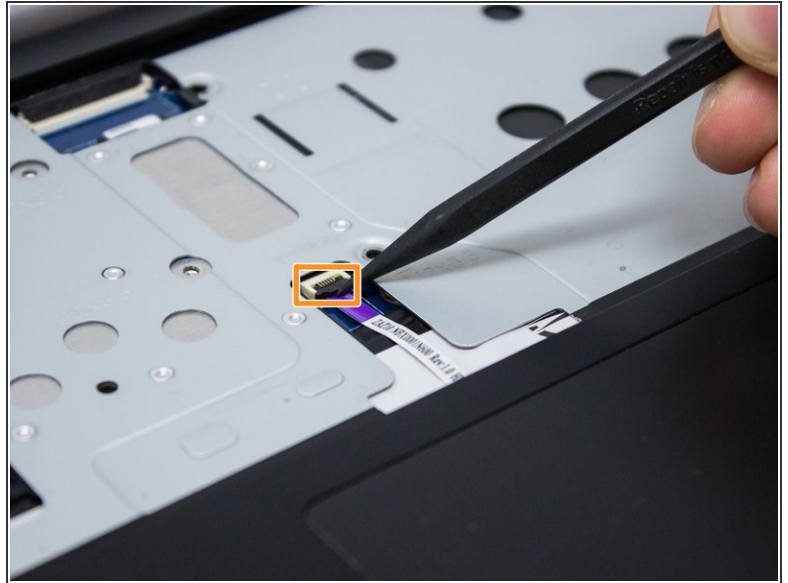
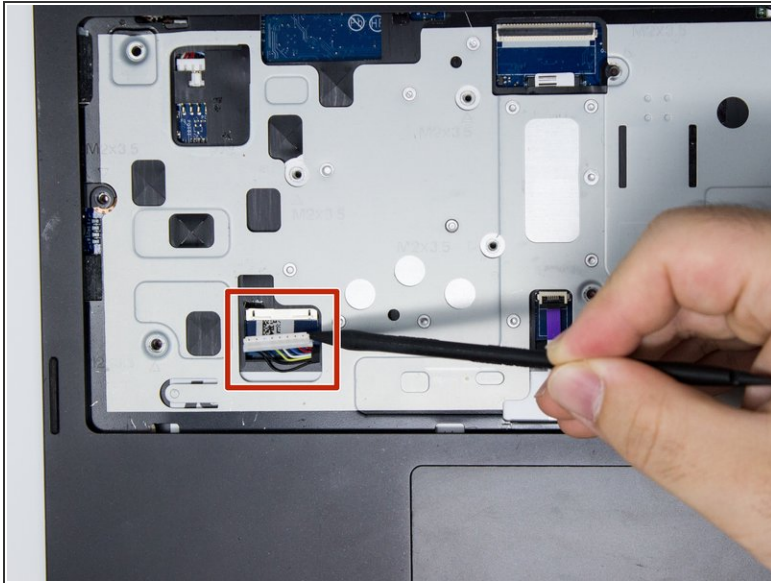
- Remove the two rubber feet of the back of the Chromebook using a metal spudger.
- Remove six bottom 3.5 mm Phillips #0 screws and two top 5 mm Phillips #1 screws.

Step 5



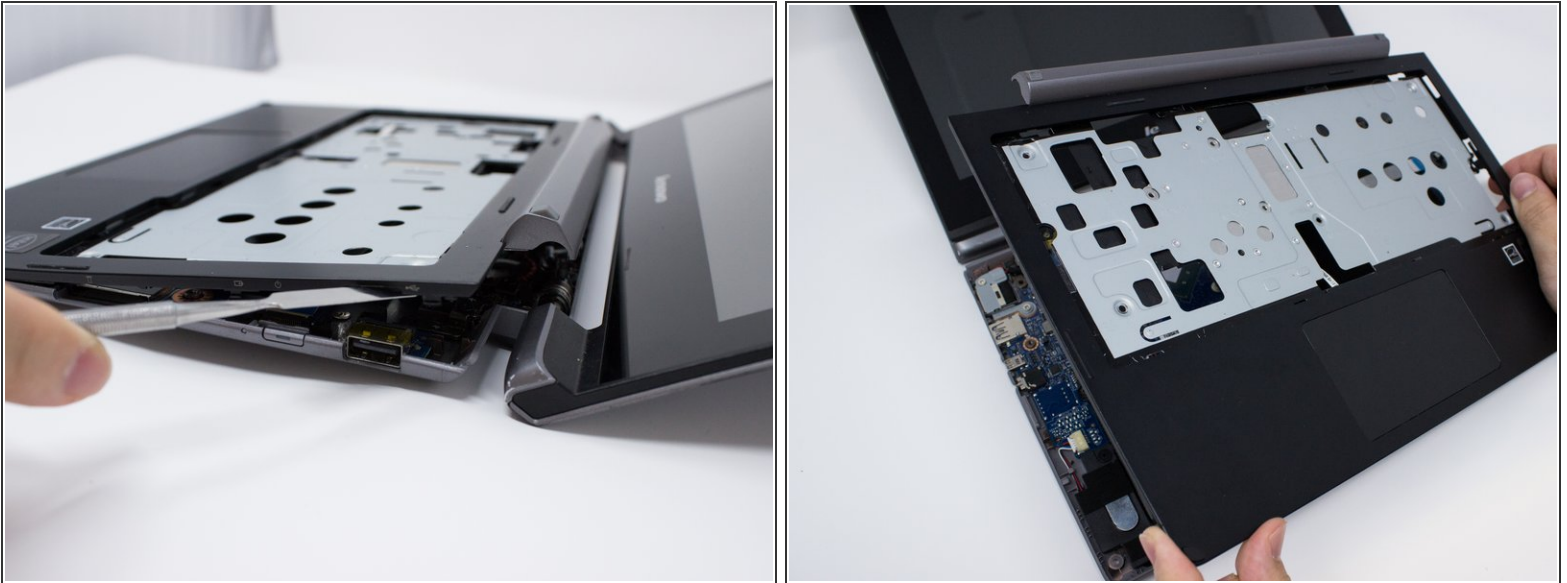
- Remove all nine 3.5 mm Phillips #00 screws using a screwdriver.

Step 6



- Disconnect the battery cable from the motherboard.
- Disconnect the touch-pad cable from the motherboard.

Step 7



- Use the metal spudger along the seam between the keyboard and the bottom of the Chromebook to lift up and remove the palm rest assembly.
- ⓘ It is normal for it to click loudly when it is released. Corner tags will be harder to release than other tags and will make a loud sound.

Step 8



- Disconnect the USB cable from the motherboard by pulling the blue tab out of the cable.
- Remove all five 3.0 mm Phillips #00 screws which connect the battery and motherboard.

Step 9



- Remove the battery.
- i** It is helpful to lift and hold the battery as shown.

Step 10 — WLAN & Bluetooth



- Disconnect the white and black cables from the WLAN & Bluetooth combo.
- Remove the 2 mm Phillips #1 screw.
- Lift and pull the WLAN & Bluetooth in the direction shown.

Step 11



- You will now be able to replace the WLAN & Bluetooth combo module.

To reassemble your device, follow these instructions in reverse order.