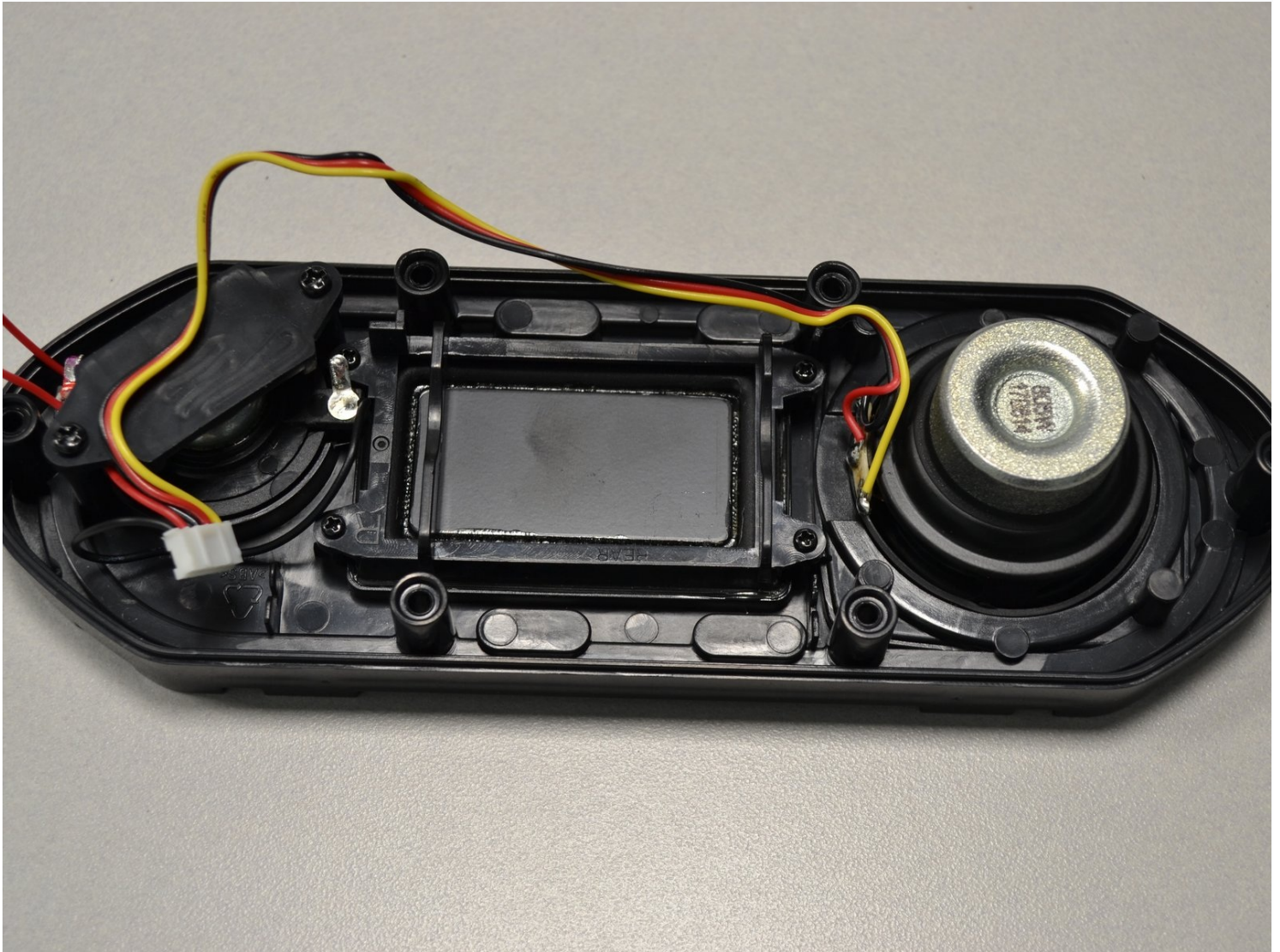




# Altec Lansing BoomJacket 2 Speaker Replacement

If the speaker sound quality is distorted or...

Written By: Zach Braaten



# INTRODUCTION

If the speaker sound quality is distorted or quiet you can follow this guide to replace the defective speaker.

## TOOLS:

Phillips #1 Screwdriver (1)

PH1

Tweezers (1)

Metal Spudger (1)

## PARTS:

4mm x 12mm screw (6)

Phillips Head

Rubber Stopper (6)

*A rubber plug that keeps the screw sealed*

12 mm x 3 mm (6)

Philips

*There is a built in washer on the head of the screw*

## Step 1 — Altec Lansing BoomJacket 2 Disassembly



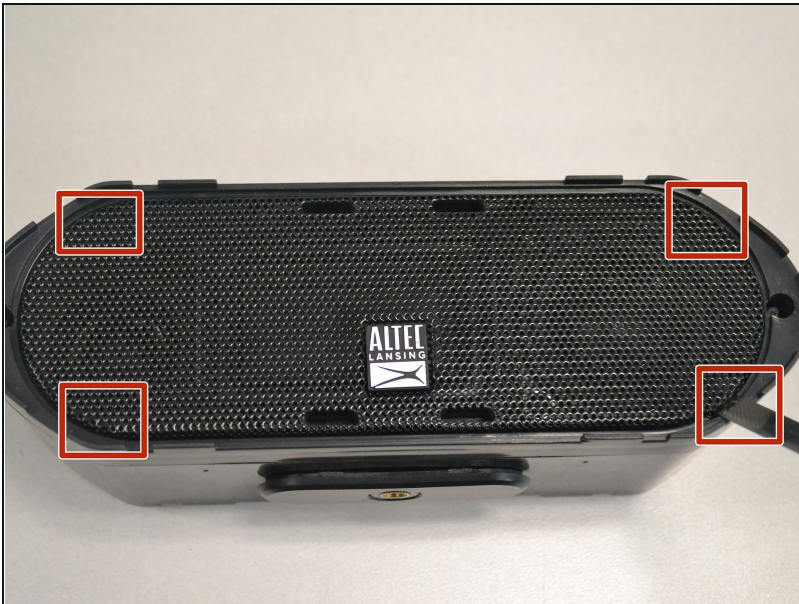
- Starting from any side, use your fingers to grab the black rubber sleeve and gently pull away from the speaker on both sides.

## Step 2



- Using your fingers, grab the blue sleeve from one side and pull away from the unit.

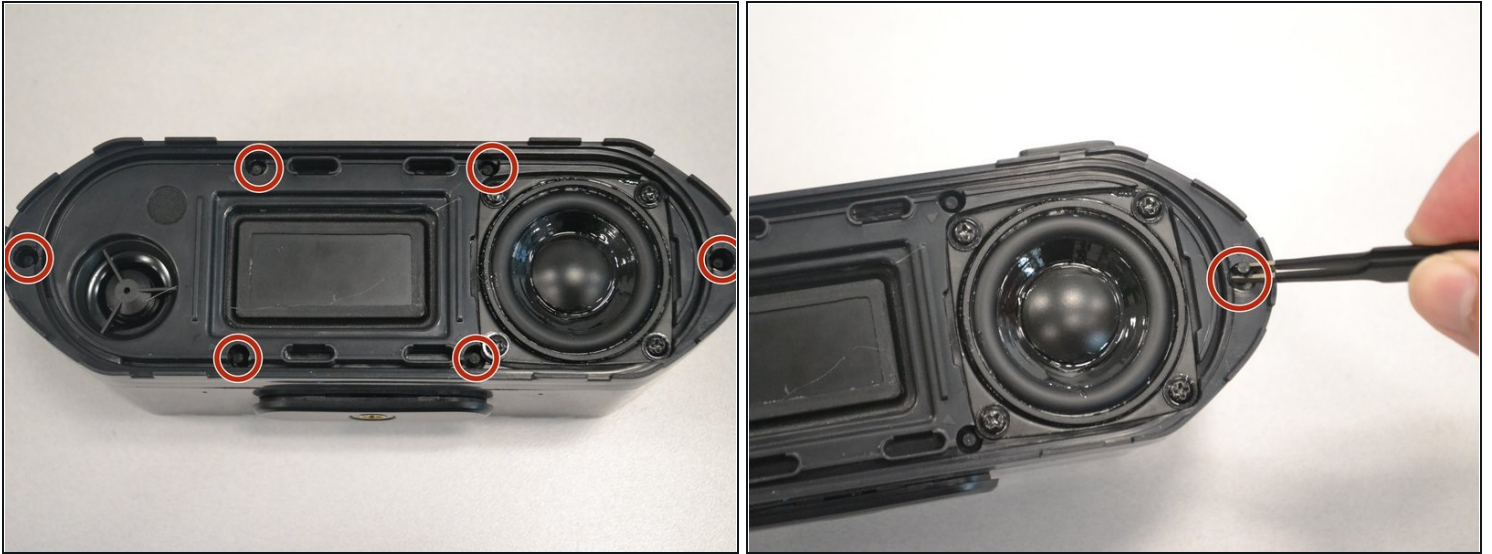
## Step 3



- At each of the marked pry spots, use the metal spudger to lift the speaker grill away from the case.

⚠ Avoid using excessive force to prevent bending the grill.

## Step 4



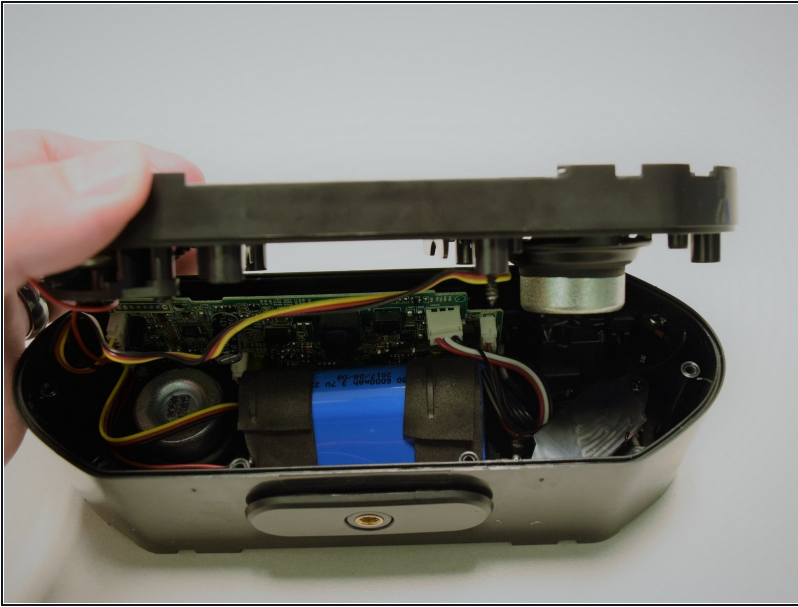
- Use the [tweezers](#) to remove the six rubber stoppers. There are four in the middle and two on the sides.

## Step 5



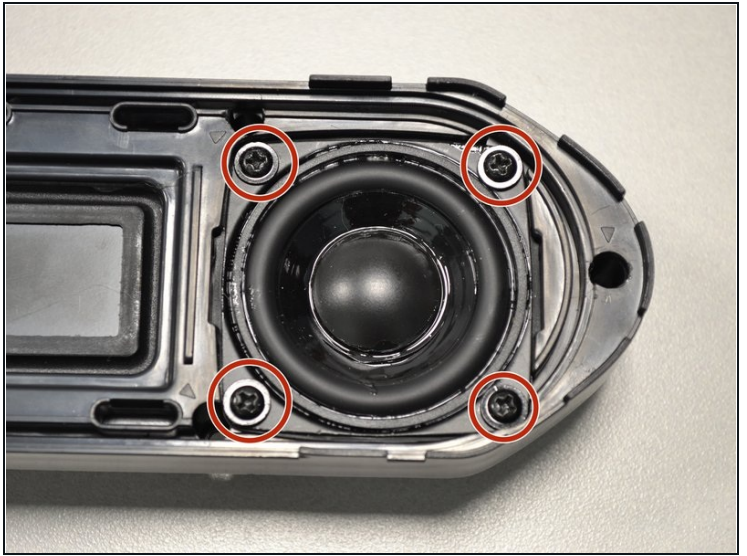
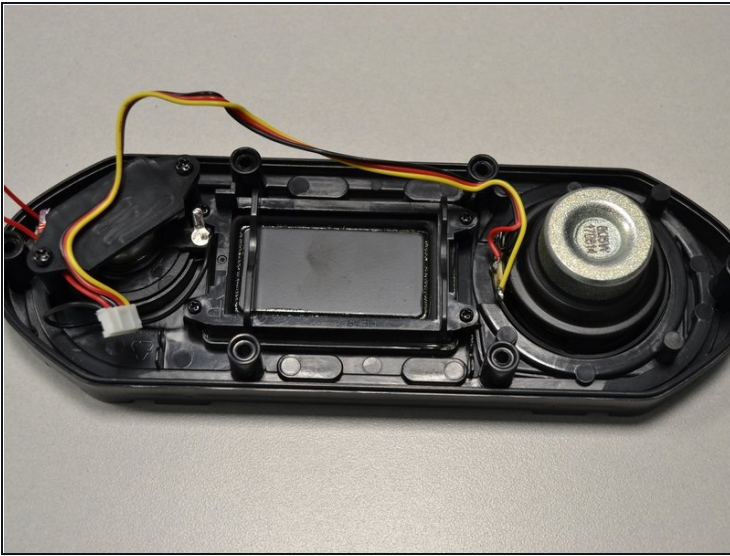
- Use the PH1 Phillips screwdriver to remove the six 12mm screws that lie underneath each rubber stopper.

## Step 6



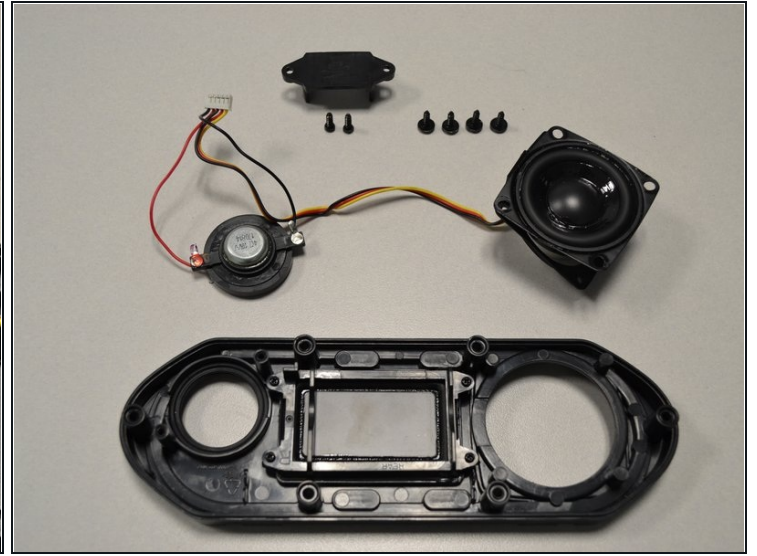
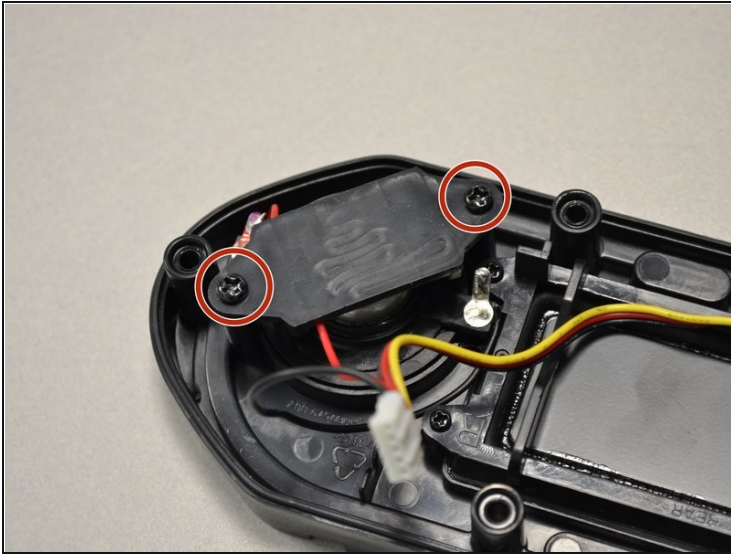
- Gently pull apart the front panel from the base of the speaker.

## Step 7 — Speaker



- Unscrew the four screws holding the speaker in place.

## Step 8



- Unscrew the two screws on the smaller speaker.
- Pull the small speaker through the larger speaker hole.

---

To reassemble your device, follow these instructions in reverse order.