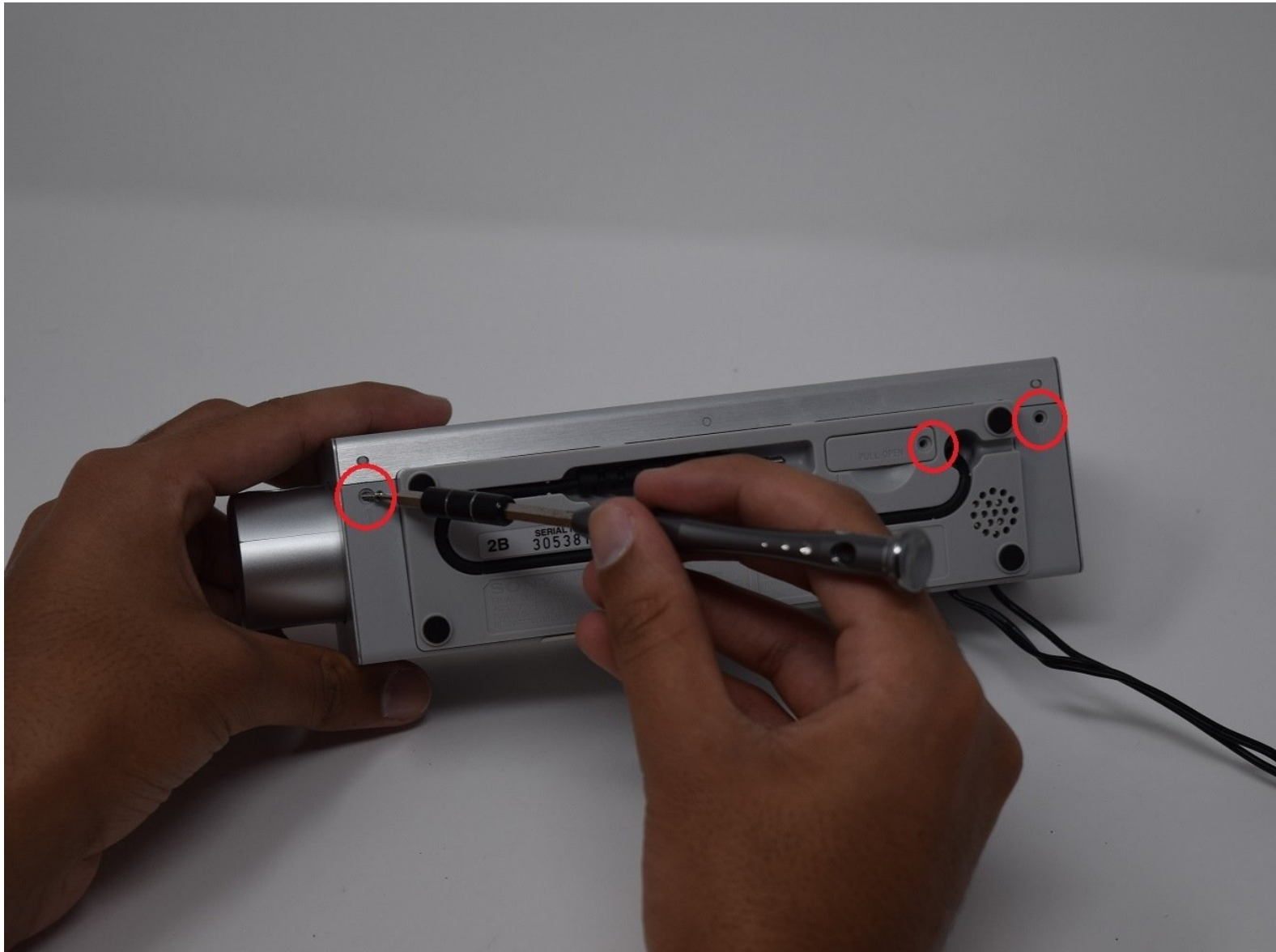




# Sony Dream Machine ICF-C717PJ Screen Replacement

This guide will help fix any display issues you are facing with the Sony Dream Machine.

Written By: Gurleen Powar



---

## INTRODUCTION

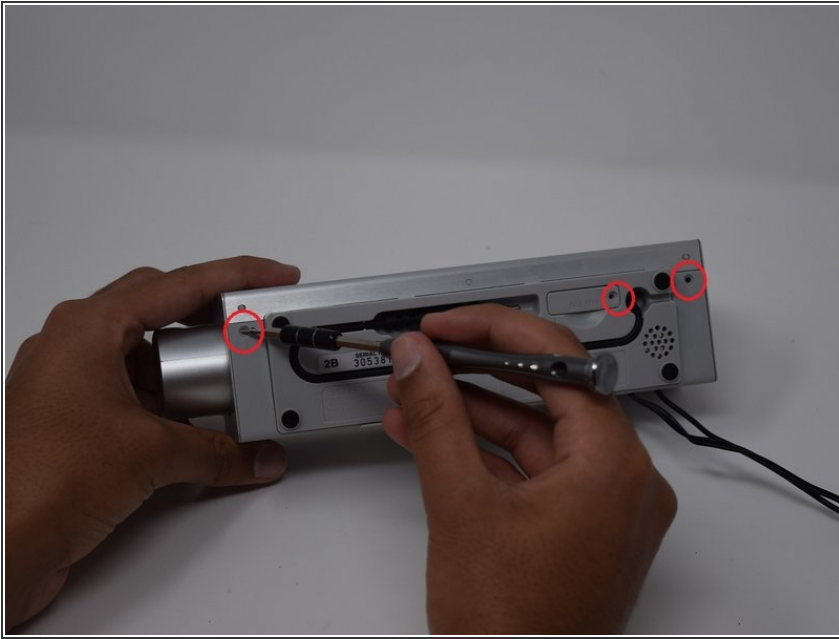
If the display on the Sony Dream Machine is not showing up properly or has any similar issues, the display monitor may need to be adjusted. Please see the Sony Dream Machine ICF-C717PJ Troubleshooting page: Sony Dream Machine ICF-C717PJ to eliminate other possible issues before tampering with the screen/display.



### TOOLS:

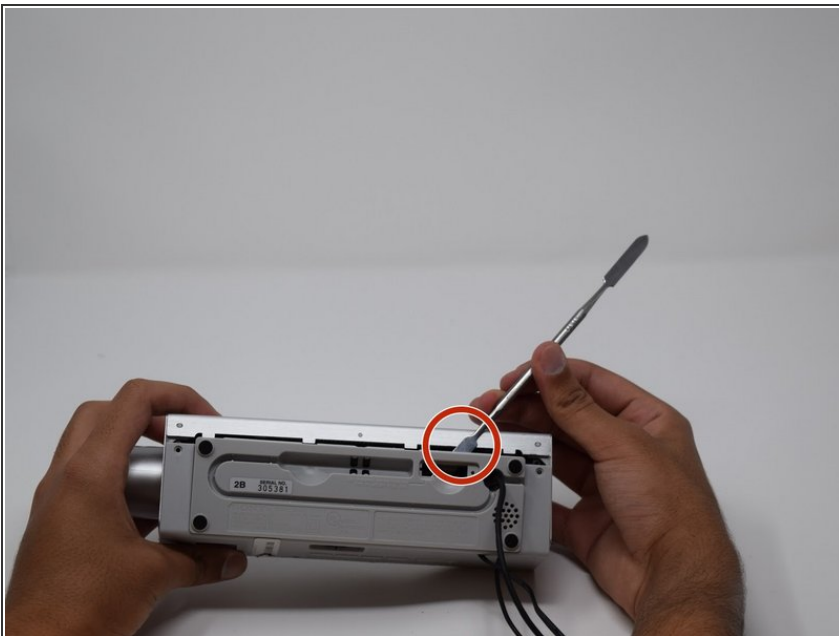
- [Phillips #0 Screwdriver](#) (1)
-

## Step 1 — Screen



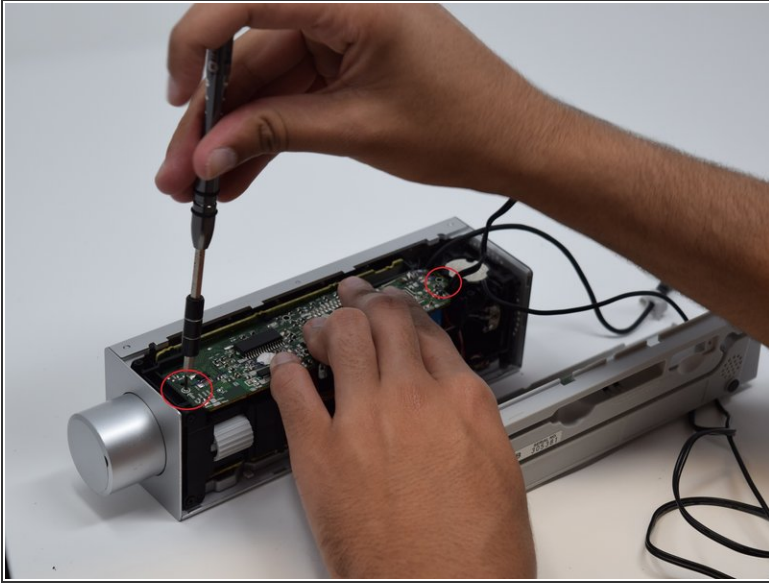
- Using a Phillips #0 screwdriver unscrew the **three** screws that connect the back panel to the device.

## Step 2



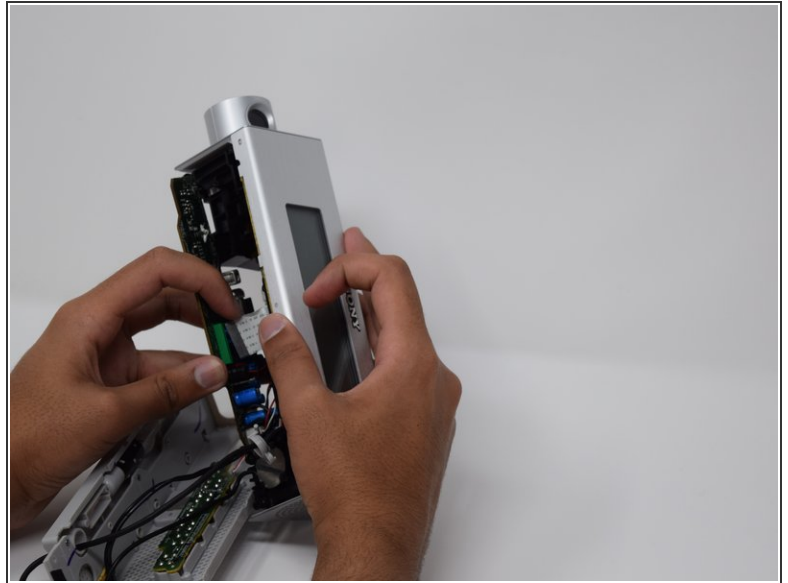
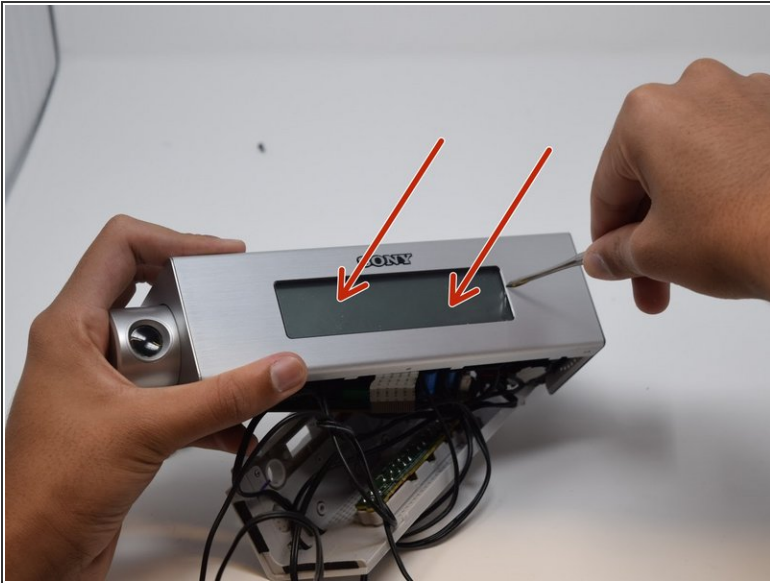
- Using a thin flat tool, pry off the panel on the back of the device.

## Step 3



- Unscrew the **two** screws connecting the motor board to the device.
- ⓘ Gently remove the motherboard from the device to gain access to the screen.

## Step 4



- Flip the device around so that the display is facing you. Gently push the display towards the inside of the device.
- ✦ Disconnect the display cable from the motherboard and reconnect the display cable for the new display.
- ⓘ After connecting the new display push it firmly in place so that the display panel is properly aligned with the cutout for the display. When correctly locked in place the display panel should not move around.

To reassemble your device, follow these instructions in reverse order.