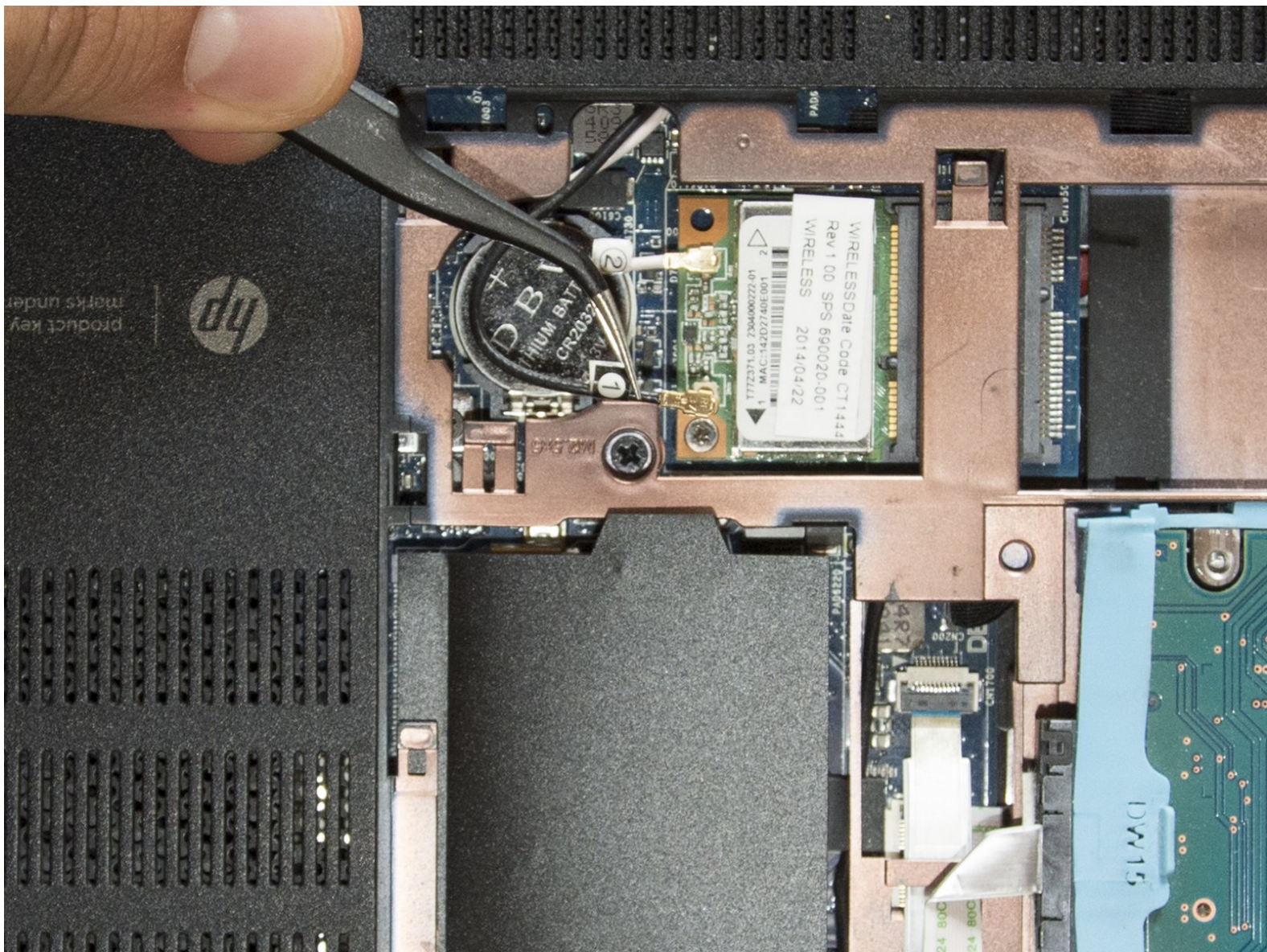




Wireless card replacement

Does the internet connection of your HP drop in and drops off randomly? Many users complain about the standard poor wifi adapter. Let's upgrade it.

Written By: Roberto Bartolacci



INTRODUCTION

Many HP users had issues with the standard Ralink RT3290 wireless card installed in this laptop. It has a very poor signal reception and only exploits the 2,4 GHz radio waves when this model has also a second antenna for the 5GHz waves. Therefore an upgrade to a better wifi adapter is possible. [A lot of users have installed the Intel AC 7260 with great results](#). Let's upgrade it.

It will be very easy. Buy the new wifi module and remember to download its drivers before starting the disassembly.



TOOLS:

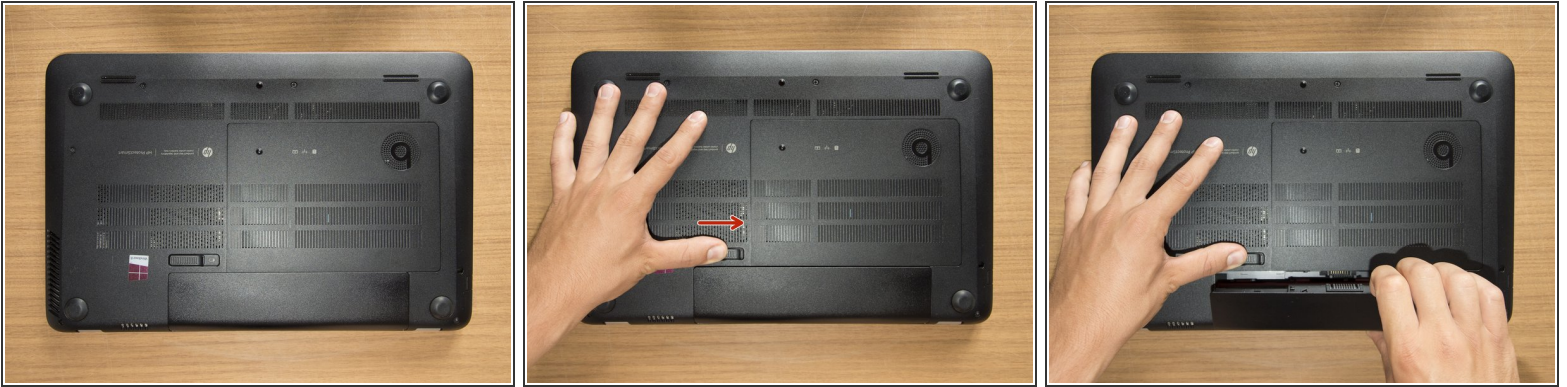
- [iFixit Opening Picks set of 6](#) (1)
- [Phillips #00 Screwdriver](#) (1)
- [iFixit Opening Tools](#) (1)
- [Tweezers](#) (1)
- [Anti-Static Wrist Strap](#) (1)
- [Spudger](#) (1)



PARTS:

- [Intel Dual Band Wireless-AC 7260HMW](#) (1)

Step 1 — Remove the battery



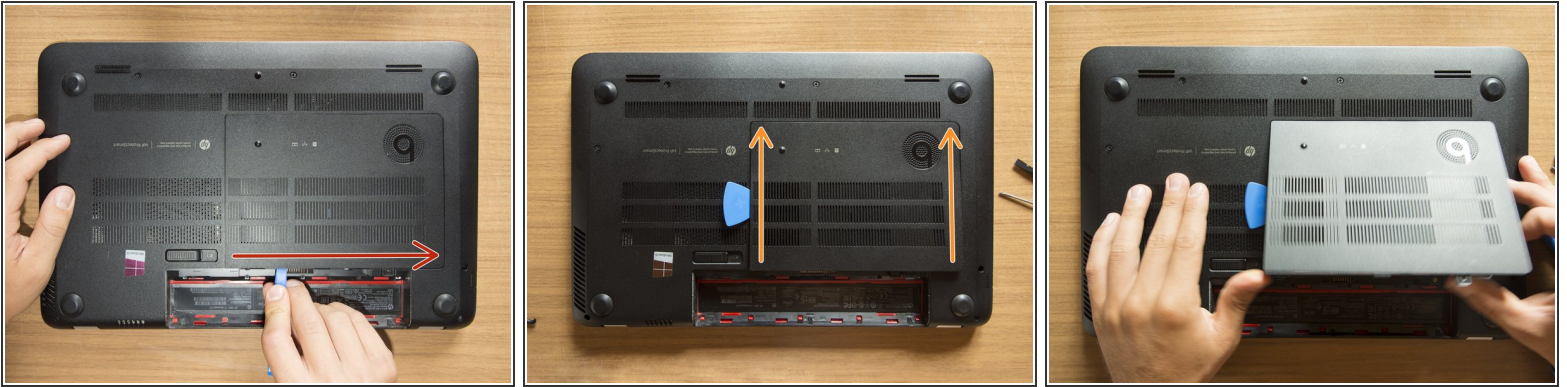
- Turn the laptop upside down and gently lay it down on a flat surface.
 - Slide the battery release latch to the right and the battery will pop up slightly.
 - While keeping the latch slid with one hand, grab the battery with the other hand and remove it by pivoting it upward.
- i** *At this point some users would turn the laptop upside down once again and press the power button a couple of times. They say that this should help dissipating all of the remaining electricity around the device. Up to you :)*

Step 2 — Remove the captive screw of the service door



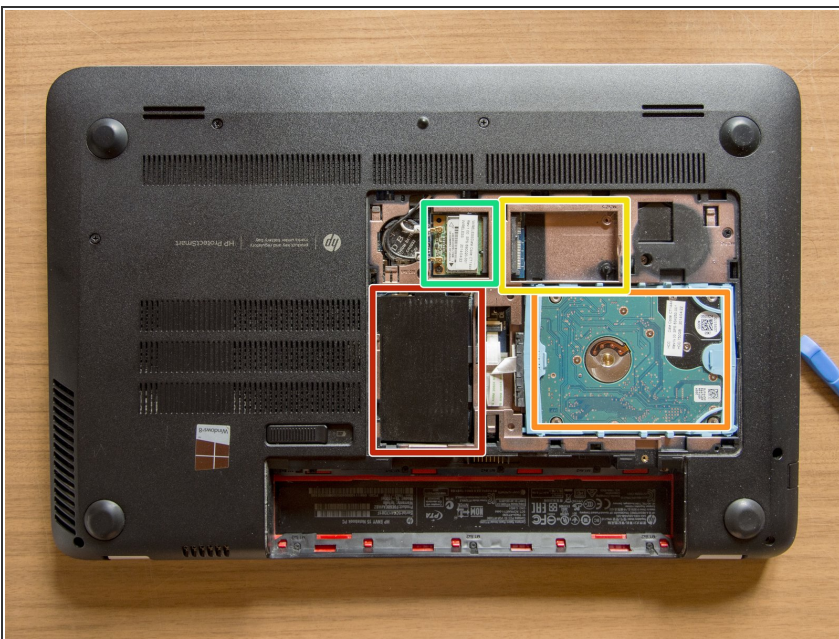
- Remove the Phillips PM2.0×4.0 screw using a PH#00 screwdriver.

Step 3 — Remove the service door



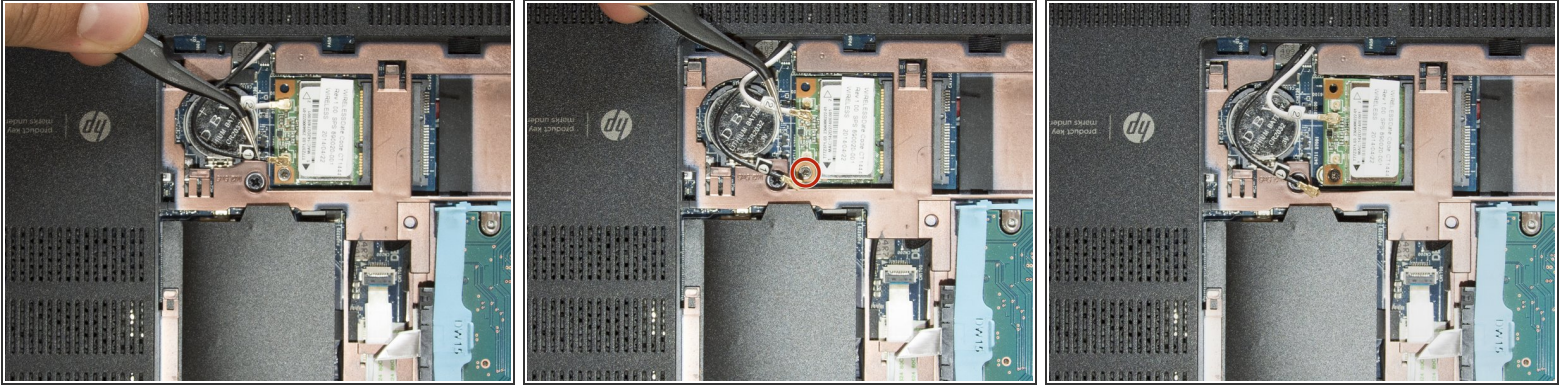
- With an opening tool pry off the tabs that secure the service door to the base enclosure. Start with the long edge.
- Continue along the short edges.
- Once you have pried the service door off as it is in pic#3, it will come out of the rear edge very easily.

Step 4 — Identify the components



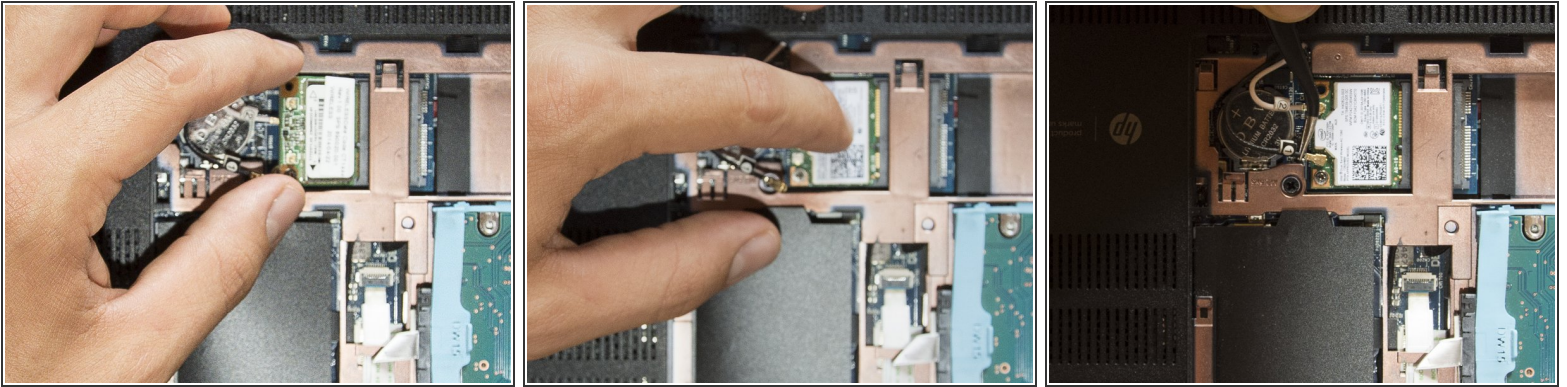
- RAM memory modules
- HDD (Hard Disk Drive)
- mSATA SSD slot
- Wifi & BT module (Wireless card)

Step 5 — Disconnect the antenna cables & unfasten the screw



- [Are you grounded?](#) If yes, [follow this method to disconnect the two antenna cables](#). I did that grabbing the wires near their connectors and pulling them straight up with the tweezers. But that method is definitely safer ;)
- Once you are done with the cables, using a PH #00 unfasten the M2.0×2.5 screw that secures the wifi module to the system board and the module will tilt up.

Step 6 — Substitute the wireless card



- Grab the standard wireless card as it is shown in the first picture and gently pull it away at the tilt angle.
- Place the M2.0×2.5 screw in the hole of the new wifi module, tilt it, and gently insert it in its slot. Then press the wireless card down with a hand and fasten the screw using a PH #00 with the other one.
- Using the tweezers center and hold the connectors of the antenna cables over their terminals and then press them straight down gently using your finger. **Cable 1** goes with the **Main** terminal and *Cable 2* with the *Aux* terminal.

Well, that's it! Take a short break if you like and then start to reassemble your laptop from the step #3 in reverse order. Once you turn the laptop on, install the new drivers and it's done ;) Cheers