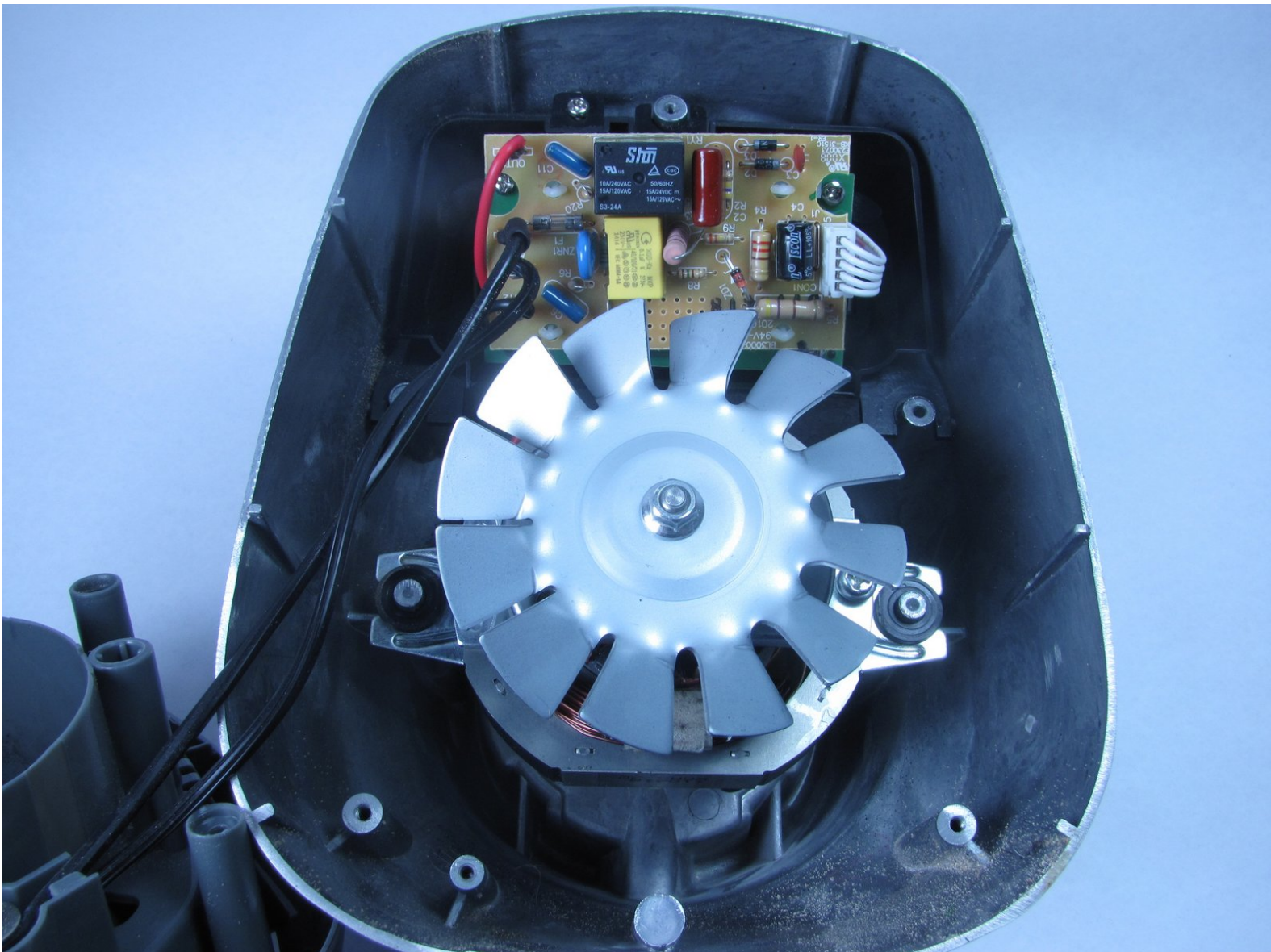




# Repairing Black and Decker BL3000S Power Cord

This guide will explain how to check the electrical connections to power the Black and Decker blender.

Written By: Elmer Pres Urbano





## TOOLS:

- [Phillips #1 Screwdriver](#) (1)
- [Flathead 3/32" or 2.5 mm Screwdriver](#) (1)
- [Solder](#) (1)
- [Soldering Iron](#) (1)
- [TA20 Screwdriver](#) (1)

## Step 1 — Blender Base



- ❗ Before disassembling the blender base, make sure the blender disconnected from any power outlet.
- Lift the jar straight up from the base without tilting the jar.

## Step 2



- Remove the top three 1/4 inch base screws using a Philip's head screwdriver.



### Step 3



- Remove the two base leg covers next to the power cord using pliers or a flat-head screwdriver.

**i** This provides access to the base screws beneath.

### Step 4

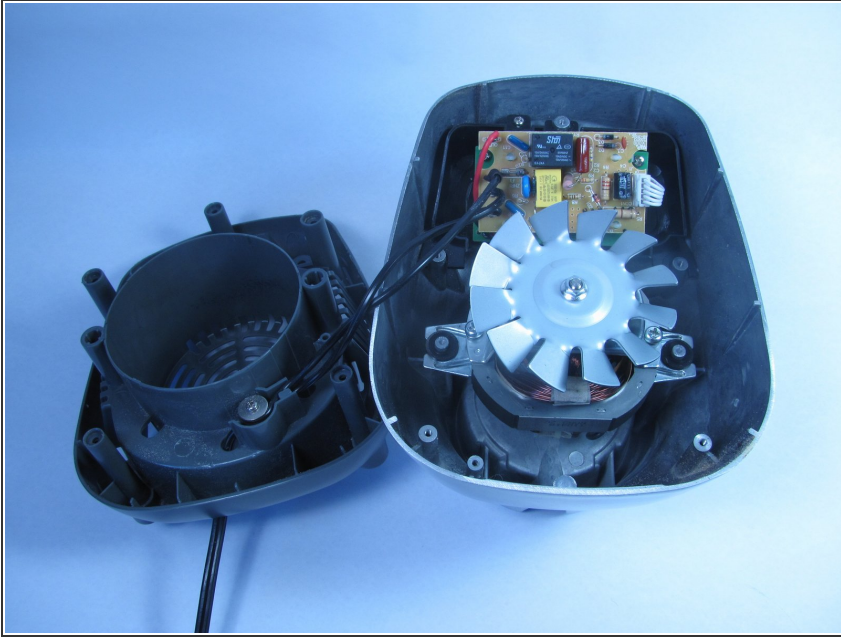


- Remove the following screws that secure the top and bottom halves of the base.
  - One 1/4 Phillips screw
  - One TA-20 screw

**i** Both screwdrivers must have a minimum of a three inch shank (length).

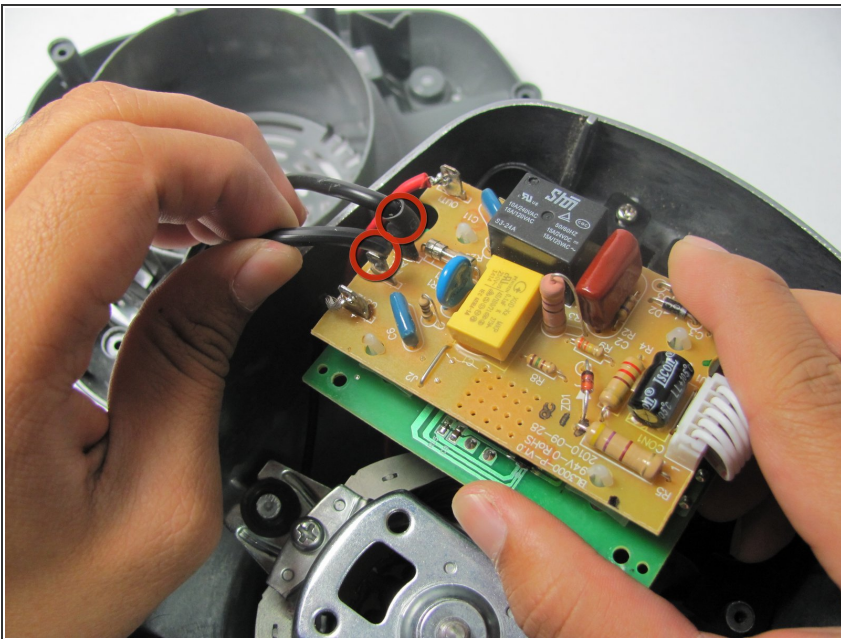
**i** Screwdrivers with extenders will not fit down the access holes.

## Step 5



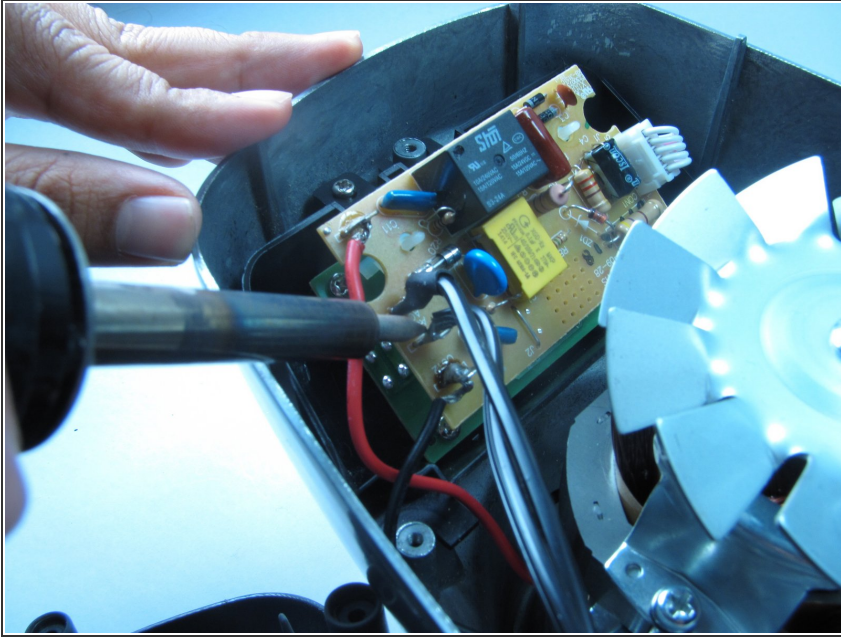
- Lift the top half of the base from the bottom half of the base to reveal the internal mechanism.

## Step 6 — Power Cord



- Tug on wires in the marked locations to make sure they are secure.
- If the wire stays still, the connection is secure.
- If you still have problems with the blender, it is probably a problem with the motor. Since the motor is irreplaceable, you will have to order a new blender.

## Step 7



- If the wire comes off, the connection is insecure. You will need to solder the connection to make it solid again.
- If you don't know how to solder, here is a link to show you how.  
<http://www.aaroncake.net/electronics/sol...>

To reassemble your device, follow these instructions in reverse order.