



# Xbox Fan Replacement

This guide will show the user how to replace a fan on an original Xbox gaming system.

Written By: Keiko McMaster



## INTRODUCTION

This guide can be used to fix the first generation of Xbox. When taking the Xbox apart to replace the fan make sure to be careful in carefully following all of the steps to ensure that you can put it back together properly.



### TOOLS:

- [Flathead Screwdriver](#) (1)
- [T10 Torx Screwdriver](#) (1)
- [T20 Torx Screwdriver](#) (1)



### PARTS:

- [Xbox original fan](#) (1)

## Step 1 — Fan Replacement



- Turn the Xbox on its back and remove the rubber feet in each corner using a flathead screwdriver.



## Step 2



- Peel off the stickers on the bottom side of the Xbox and unscrew all six screws using a Torx 20 screwdriver bit. Set the screws off to the side so you don't misplace them.

## Step 3



- Turn the console upright and remove the lid.
- ⓘ If you are having some trouble getting the lid off, try gently shaking the device while you pull up.

## Step 4



- In order to remove the IDE cable, pull firmly on the cable straight back from the hard drive.
- ⓘ This may be slightly difficult; wiggling the cable back and forth will help to unfasten it.

## Step 5



- Remove the screw from underneath the IDE cable using a Torx 10 screwdriver.
- ⓘ This screw is located between the hard drive and DVD drive.

## Step 6



- Remove the hard drive by pulling it directly up and out of the case.
- ⓘ The hard drive is attached to a power cable, but you shouldn't need to remove the power cable to get the drive out unless you are replacing the hard drive.

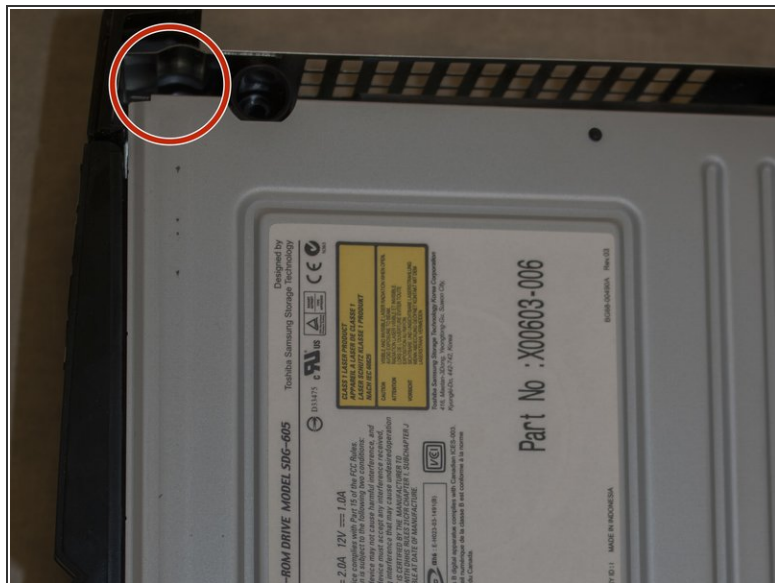
## Step 7



- Remove the cable the same way that the hard drive cable was removed. Simply pull the cable straight out from the DVD drive.



## Step 8



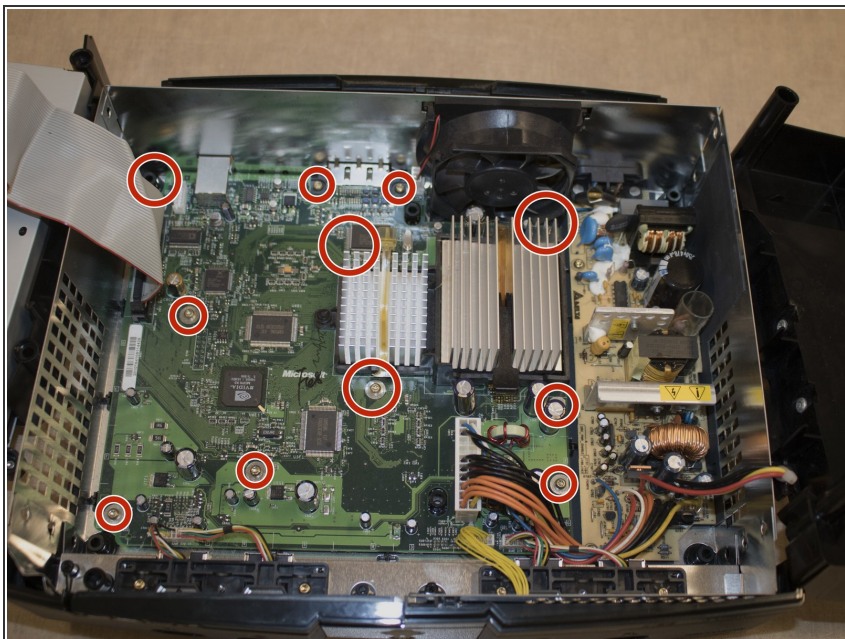
- Remove the screws from each end of the DVD drive using a Torx 10 screwdriver.

## Step 9



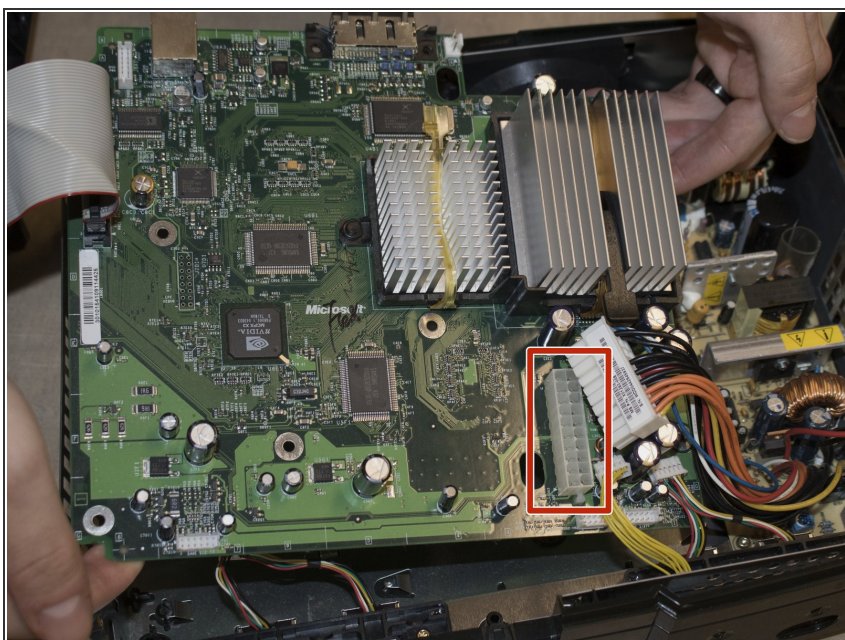
- Once both screws have been removed pull straight upwards to remove the drive.

## Step 10



- Unscrew all eleven screws that hold the mother board in place. Use a Torx 10 screwdriver to unscrew them.

## Step 11



- Remove the power cord by gently lifting it out at a 45 degree angle.
- After the power cord is removed gently lift out the mother board by placing your fingers around the edges inside the case and lifting straight up and out.



## Step 12



- Remove the old fan by pressing gently on the clips on each side with a flathead screwdriver and then carefully clip in a new fan.

To reassemble your device, follow these instructions in reverse order.