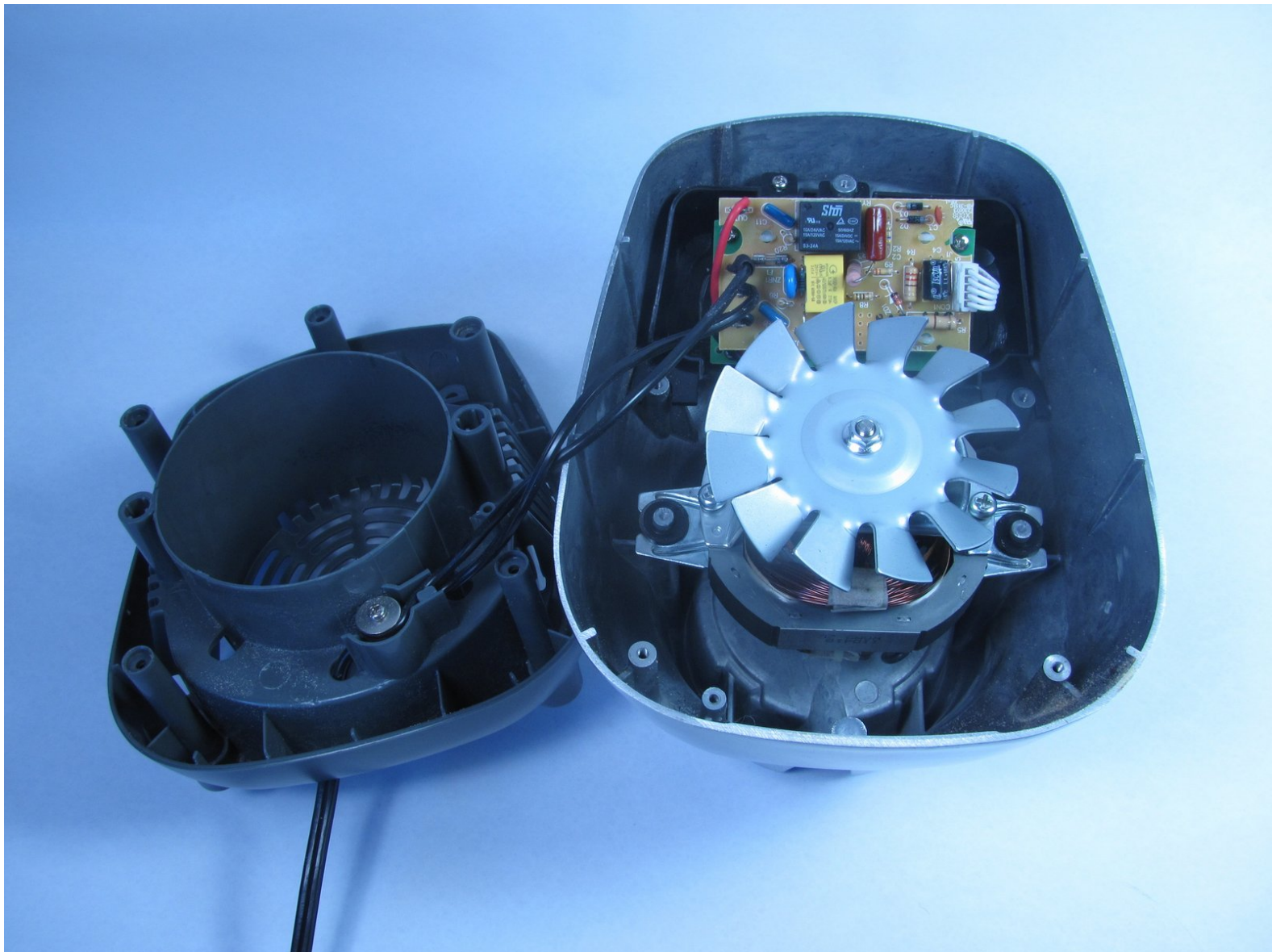




Black and Decker BL3000S Motor Fan Replacement

This guide will walk you through disassembling your blender, and help you properly install the motor fan.

Written By: Andrew



INTRODUCTION

Upon completion of this guide, you can successfully install and replace the motor fan for you blender.



TOOLS:

- [Phillips #1 Screwdriver](#) (1)
 - [Large Needle Nose Pliers](#) (1)
 - [Flathead 3/32" or 2.5 mm Screwdriver](#) (1)
 - [TA20 Screwdriver](#) (1)
-

Step 1 — Blender Base



- ❗ Before disassembling the blender base, make sure the blender disconnected from any power outlet.
- Lift the jar straight up from the base without tilting the jar.

Step 2



- Remove the top three 1/4 inch base screws using a Philip's head screwdriver.

Step 3



- Remove the two base leg covers next to the power cord using pliers or a flat-head screwdriver.

i This provides access to the base screws beneath.

Step 4

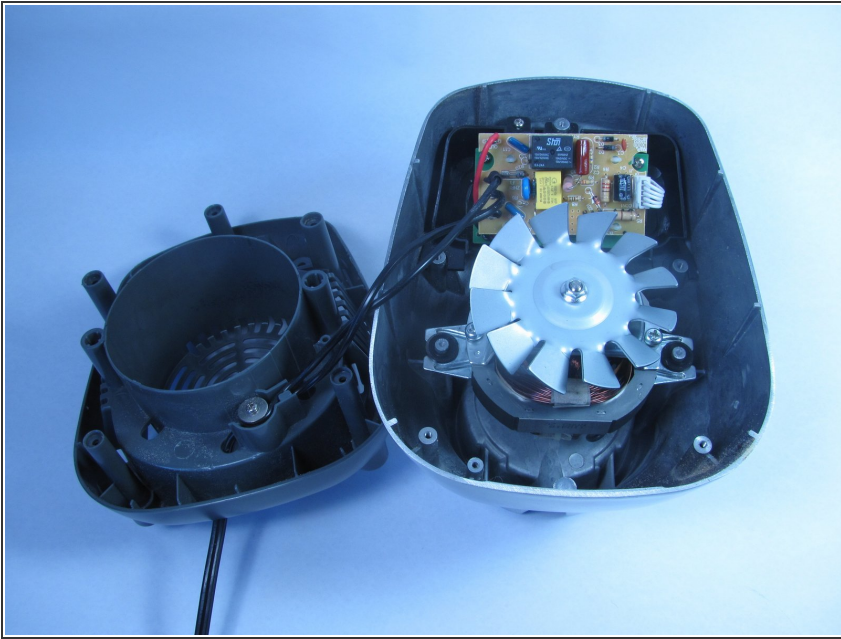


- Remove the following screws that secure the top and bottom halves of the base.
 - One 1/4 Phillips screw
 - One TA-20 screw

i Both screwdrivers must have a minimum of a three inch shank (length).

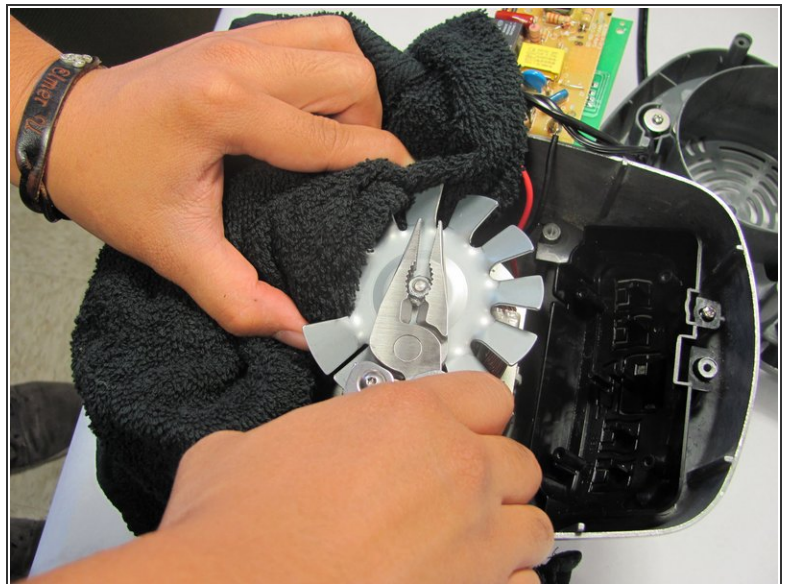
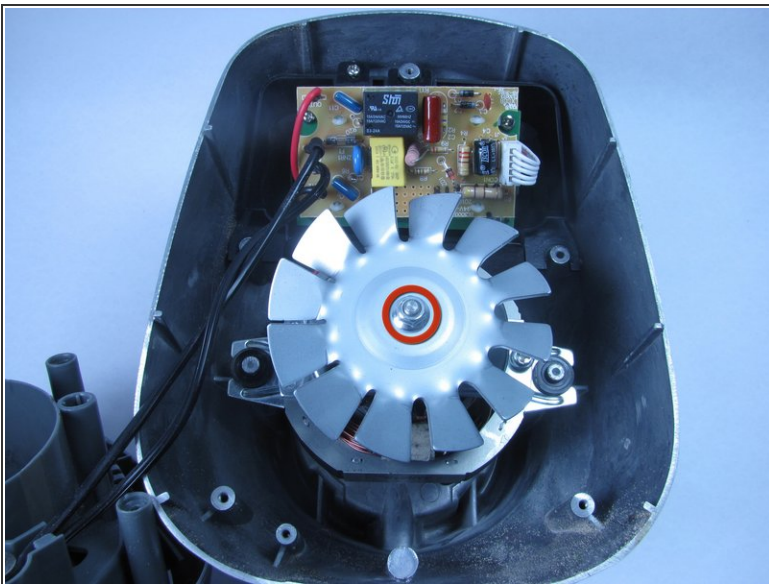
i Screwdrivers with extenders will not fit down the access holes.

Step 5



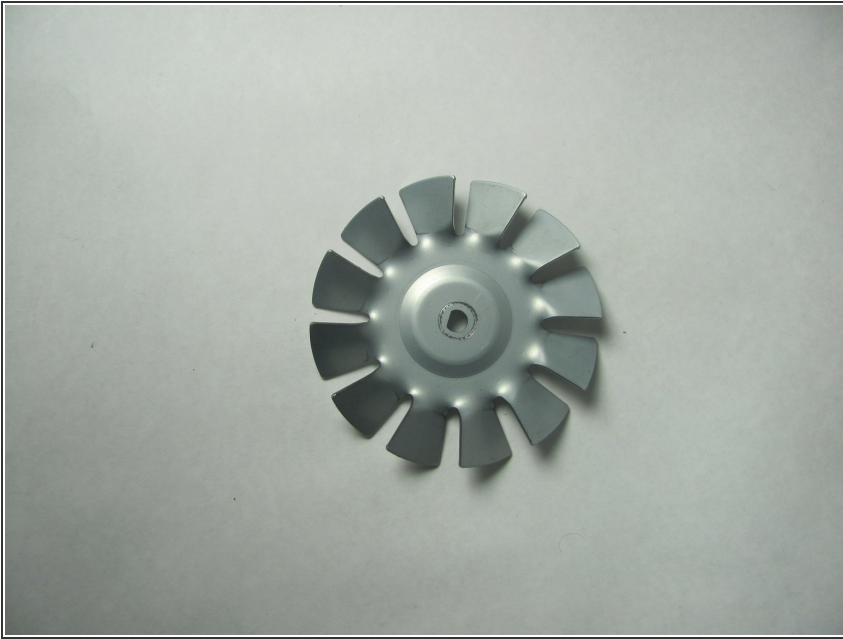
- Lift the top half of the base from the bottom half of the base to reveal the internal mechanism.

Step 6 — Motor Fan



- Using pliers, remove the top nut from the fan and remove the washer.
- ⓘ Use a small towel to hold the fan in place. This makes taking off the nut easier to do.

Step 7



- Lift the fan blades from the blender base.

To reassemble your device, follow these instructions in reverse order.