



# HP Mini 210 WiFi Card Replacement

This guide will show you exactly how easy it is to replace the WiFi Card on the HP Mini 210.

Written By: Heather Freed



---

## INTRODUCTION

Installing a new WiFi card is quick and simple.

The WiFi card in the HP Mini 210 uses a Mini PCIe interface, which is the de-facto standard on recent laptops. Please ensure you install an official HP verified wireless card to prevent running into errors.



### TOOLS:

- [Phillips #00 Screwdriver](#) (1)
  - [Spudger](#) (1)
  - [iFixit Opening Tools](#) (1)
-

## Step 1 — Battery



- i** Turn off and unplug the netbook before replacing the battery.

  - Hold the netbook top-side down with the lid closed.
  - Slide the plastic battery release latches towards the lock symbols.
- i** The left tab unlocks completely, but you will need to hold the right tab towards the lock symbol as you remove the battery.

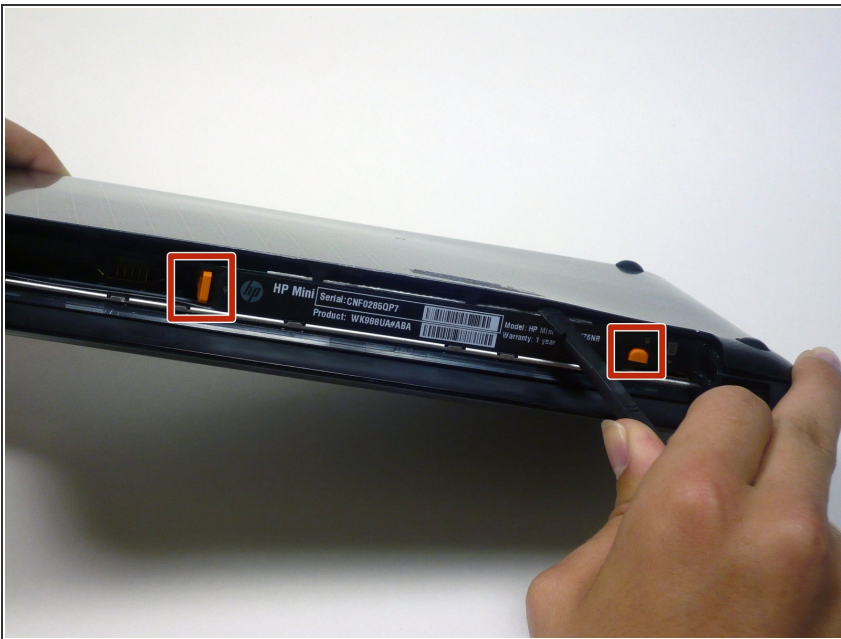


## Step 2



- Slide the battery out from the netbook.

## Step 3 — Disassembling HP Mini 210 Back Case



- Turn the netbook to view its edge.
- Press both orange eject buttons simultaneously, and use a spudger to pry off the back case.

## Step 4



- If the back case does not separate from the netbook easily, use the spudger to pry off the back case by the edge near the battery compartment, and work your way to the sides. The case will then pivot along the front edge.

## Step 5



- Pull the back case off from the front edge.

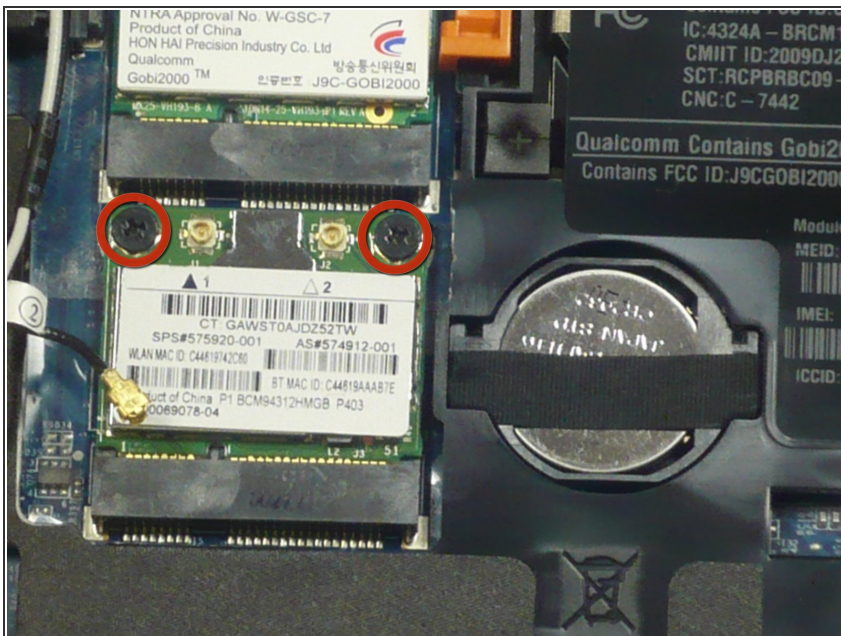


## Step 6 — WiFi Card



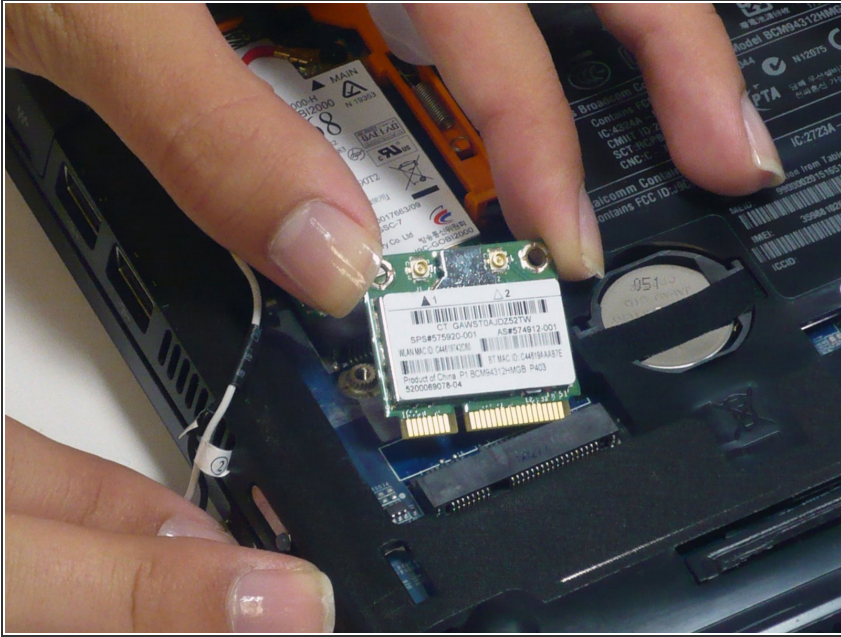
- Pop out the two gold connectors from the antenna wires on top of the WiFi card using a plastic opening tool. This will allow you to dislodge the WiFi card from the rest of the netbook.

## Step 7



- Remove the two 3.9 mm screws on top of the WiFi card using the Phillips #00 screwdriver.

## Step 8



- Gently pull the WiFi card out of its slot. Be sure to pull the card up and out of the slot towards you.

To reassemble your device, follow these instructions in reverse order.