



# Shark DuoClean Powered Lift-Away Speed Drive Belt Replacement

How to replace the drive belt in the Shark DuoClean Powered Lift-Away Speed.

Written By: Catie Halvorsen



## INTRODUCTION

If the drive belt is out of place or jammed, use this guide to replace the drive belt. You will need the T10 and T20 Torx screwdrivers.



### TOOLS:

- [TR10 Torx Security Screwdriver](#) (1)
- [T20 Torx Screwdriver Bit](#) (1)



### PARTS:

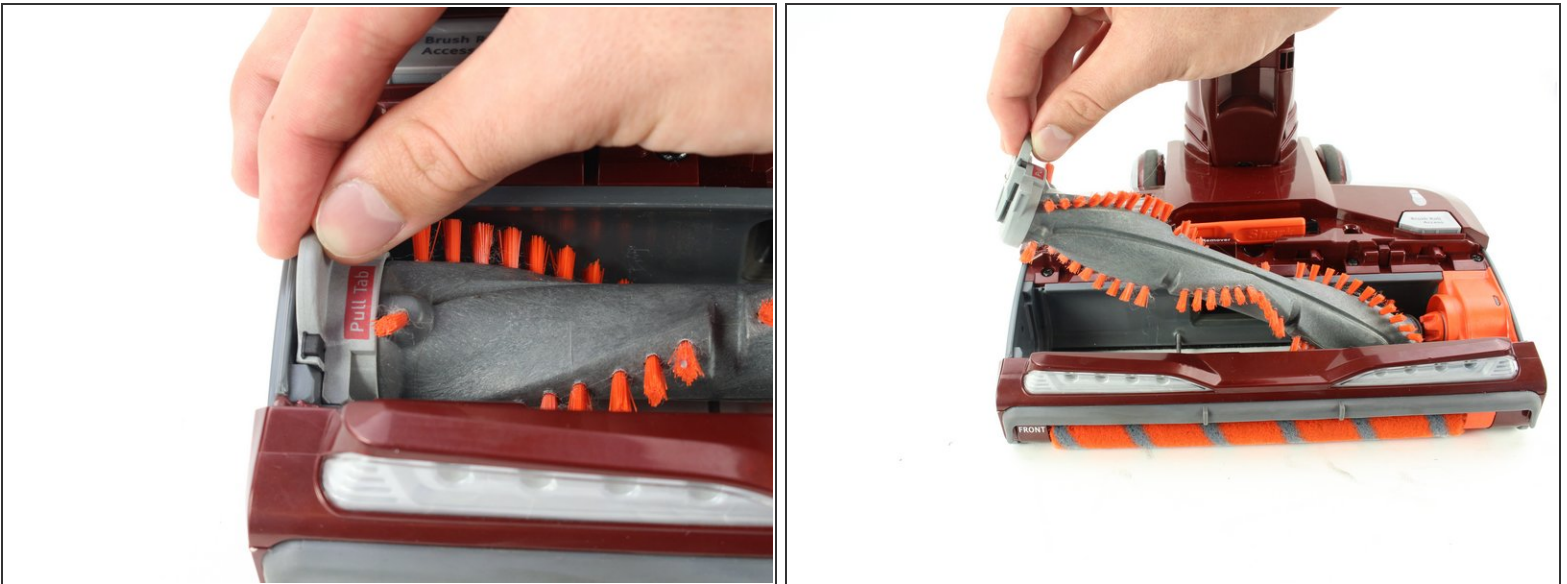
- [Shark DuoClean Powered Lift-Away Speed Drive Belt](#) (1)

## Step 1 — Brushroll



- Press the two Brush Roll Access buttons down at the same time to detach the cover.
- Pull the cover off of the vacuum by lifting it up.

## Step 2



- Pull up on the Pull Tab to remove the large brush roll.



### Step 3



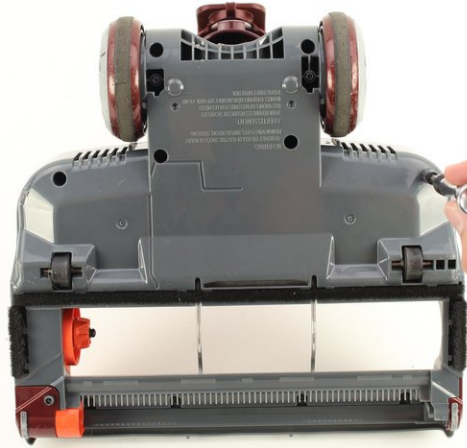
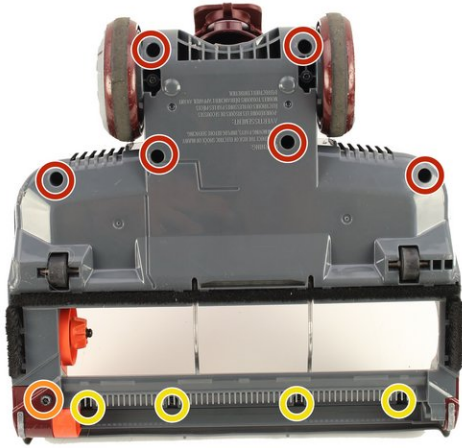
- Press the Eject Roller button to detach the small roller.
- Pull the roller away from the vacuum to remove it.

### Step 4 — Drive Belt



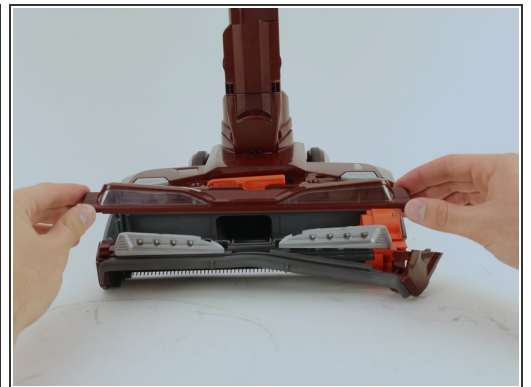
- Use the T20 screwdriver to remove the four 17 mm screws by turning counterclockwise.

## Step 5



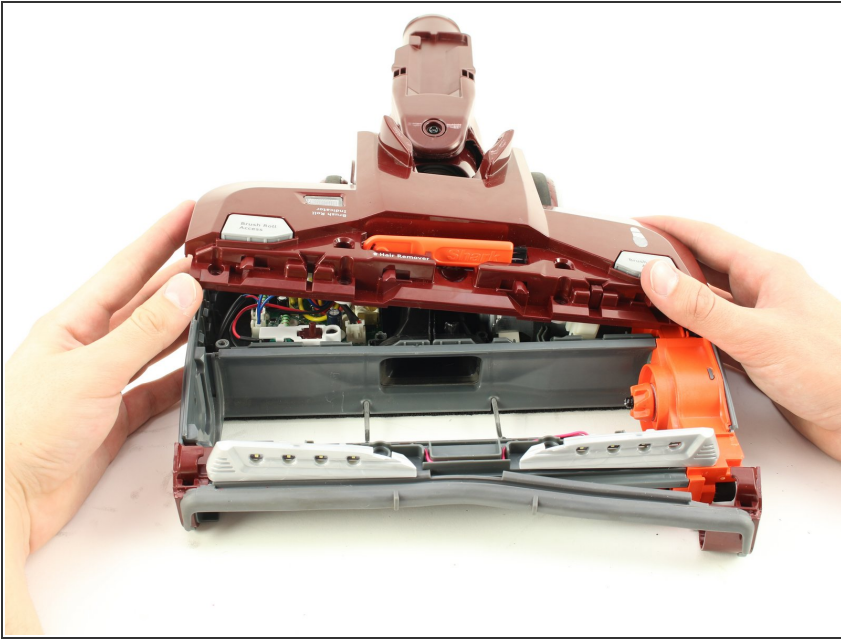
- Use the T20 screwdriver to remove the six 19 mm screws by turning counterclockwise.
- Use the T20 screwdriver to remove the one 12 mm screw by turning counterclockwise.
- Use the T10 screwdriver to remove the four 14 mm screws by turning counterclockwise.

## Step 6



- Use the spudger tool to pry off the red plastic corner cap.
- Remove the LED headlight casing by pulling up on the casing and out on the corner cap at the same time.

## Step 7



- Remove the red cover by lifting upward.

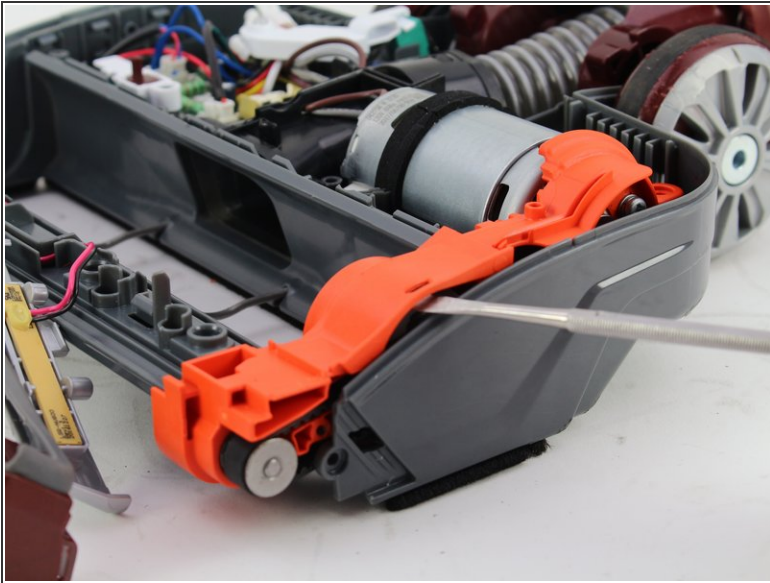
## Step 8



- Remove the light fixture by lifting it up.

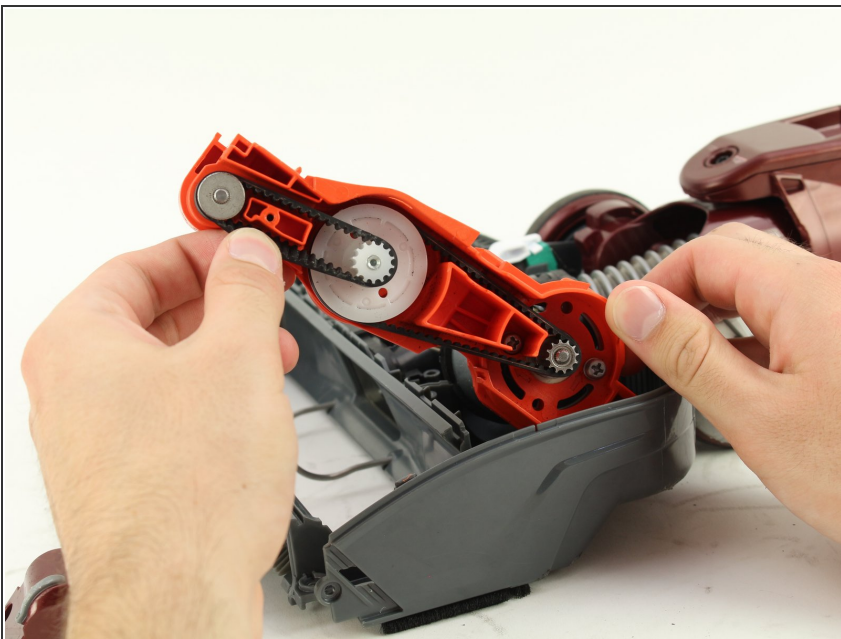


## Step 9



- Use the spudger to detach the orange drive belt compartment from the vacuum.
- Remove the orange drive belt compartment from the vacuum by lifting it upwards.

## Step 10



- Pull outward on the smaller drive belt to remove it.
  - Pull outward on the larger drive belt to remove it.
- ☒ The smaller drive belt must be removed first in order to remove the second larger belt.

To reassemble your device, follow these instructions in reverse order.