



# Shark DuoClean Powered Lift-Away Speed Motor Replacement

How to replace the motor in the Shark DuoClean Powered Lift-Away Speed. Repairs and troubleshooting here is also generally applicable to model N611 or more.

Written By: Catie Halvorsen



## INTRODUCTION

If your motor is faulty, use this guide to replace it. You will need wire strippers, wire end caps, and the T10 and T20 Torx Screwdrivers. Reassembly requires rewiring. This guide was also used and generalized for an N611 to successfully open up and fix an internal component.



### TOOLS:

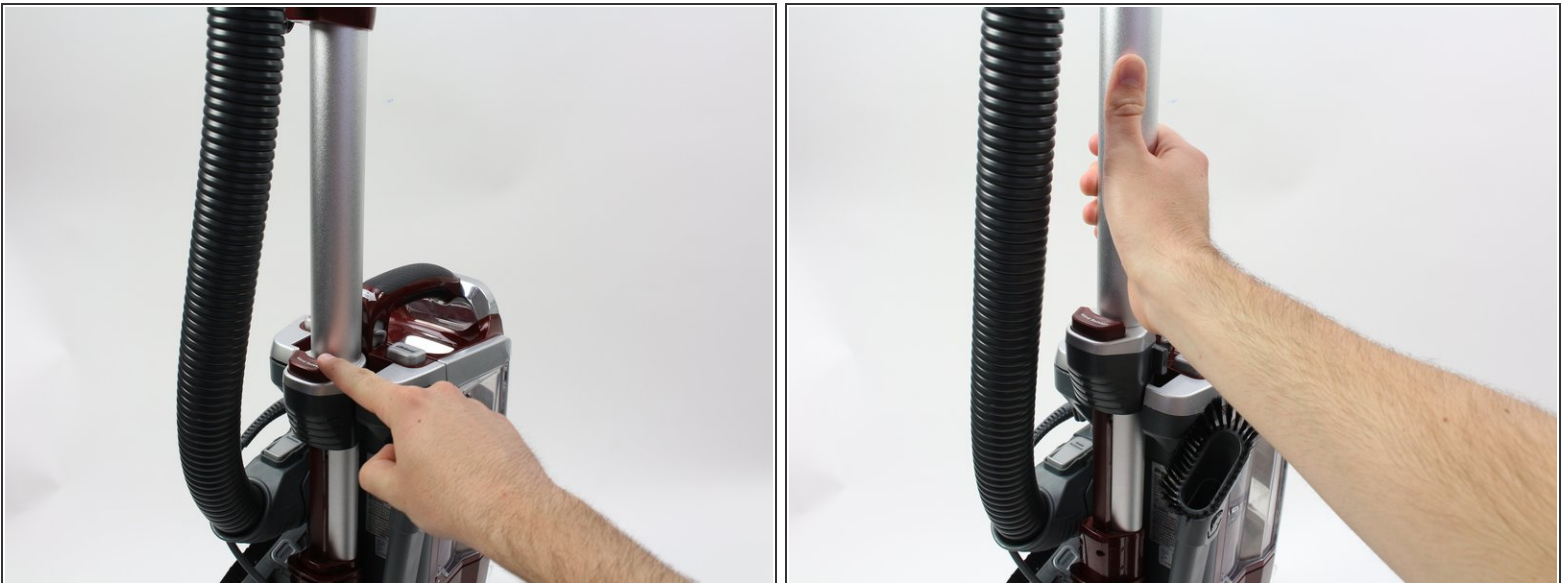
- [Wire Stripping/Crimping Tool](#) (1)
  - [wire cap](#) (1)
  - [TR10 Torx Security Screwdriver](#) (1)
  - [T20 Torx Screwdriver Bit](#) (1)
-

## Step 1 — External Pieces



- Press the Hose Release button and pull back to detach the hose.

## Step 2



- Press the Wand Release button and pull up on the metal tube to remove the entire hose.

### Step 3



- Press the Lift Away button and pull up on the handle to separate the top of the vacuum from the bottom.

### Step 4



- Pull up on the extra brush pieces to remove them from the vacuum.



## Step 5 — Filter



- Pull up on the Dustbin Release button, and pull up on the handle to detach the dustbin.

## Step 6



- Pull up on the filter tab to remove the large foam filter.

## Step 7



- Pull up on the small tab to remove the filter pad.

## Step 8 — Motor



- Use the T20 screwdriver to remove the two 12 mm screws by turning counterclockwise.
- Use the T20 screwdriver to remove the two 17 mm screws by turning counterclockwise.
- Use the T20 screwdriver to remove the two 14 mm screws by turning counterclockwise.

## Step 9




- Use the T20 screwdriver to remove the three 15 mm screws by turning counterclockwise.
- Use the T10 screwdriver to remove the one 17 mm screw by turning counterclockwise.

## Step 10



- Use the T20 Screwdriver to remove the four 14 mm screws from the bottom of the vacuum by turning counterclockwise.

 The grey plastic cylinders will detach.



## Step 11



- Use the metal spudger to pry off the back panel.

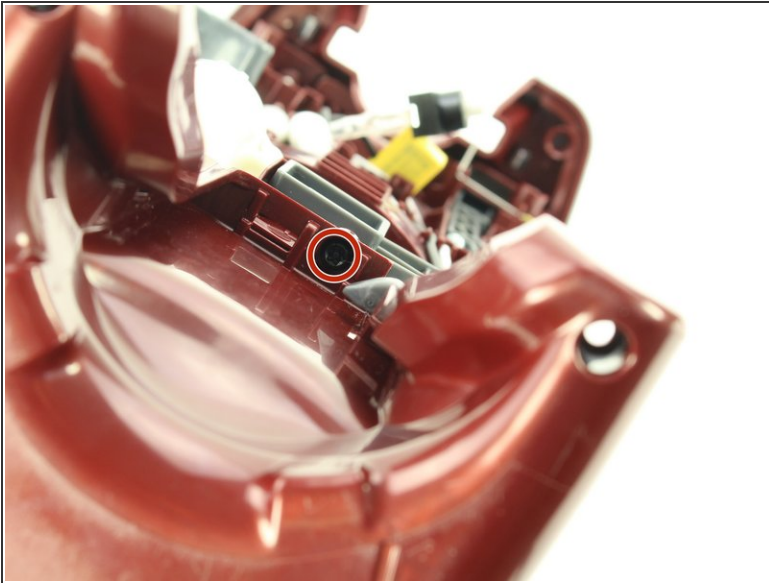
⚠ Be careful not to break or snap any plastic.

## Step 12



- Use the T20 screwdriver to remove the six 12 mm screws by turning counter clockwise.
- Lift the plastic filter holder upward to detach it from the vacuum.

## Step 13



- Use the T20 screwdriver to remove the one 14 mm screw from the bottom by turning counter clockwise.

✦ For reassembly, this screw is difficult to put back in. It is supposed to be very tight.

## Step 14



- Pull up and back in a twisting motion to remove the motor from its casing.
- ⓘ The wire connected to the motor may make it difficult to remove. It may require a lot of wiggling to get the motor out.

## Step 15



- Use wire cutters to cut the black and white wires coming from the back of the motor.
- ✦ For reassembly, you must strip and then rewire the new motor using wire strippers and end caps. Use [this](#) guide to learn more about stripping wires.

To reassemble your device, you must rewire to a new motor, then follow these instructions in reverse order.