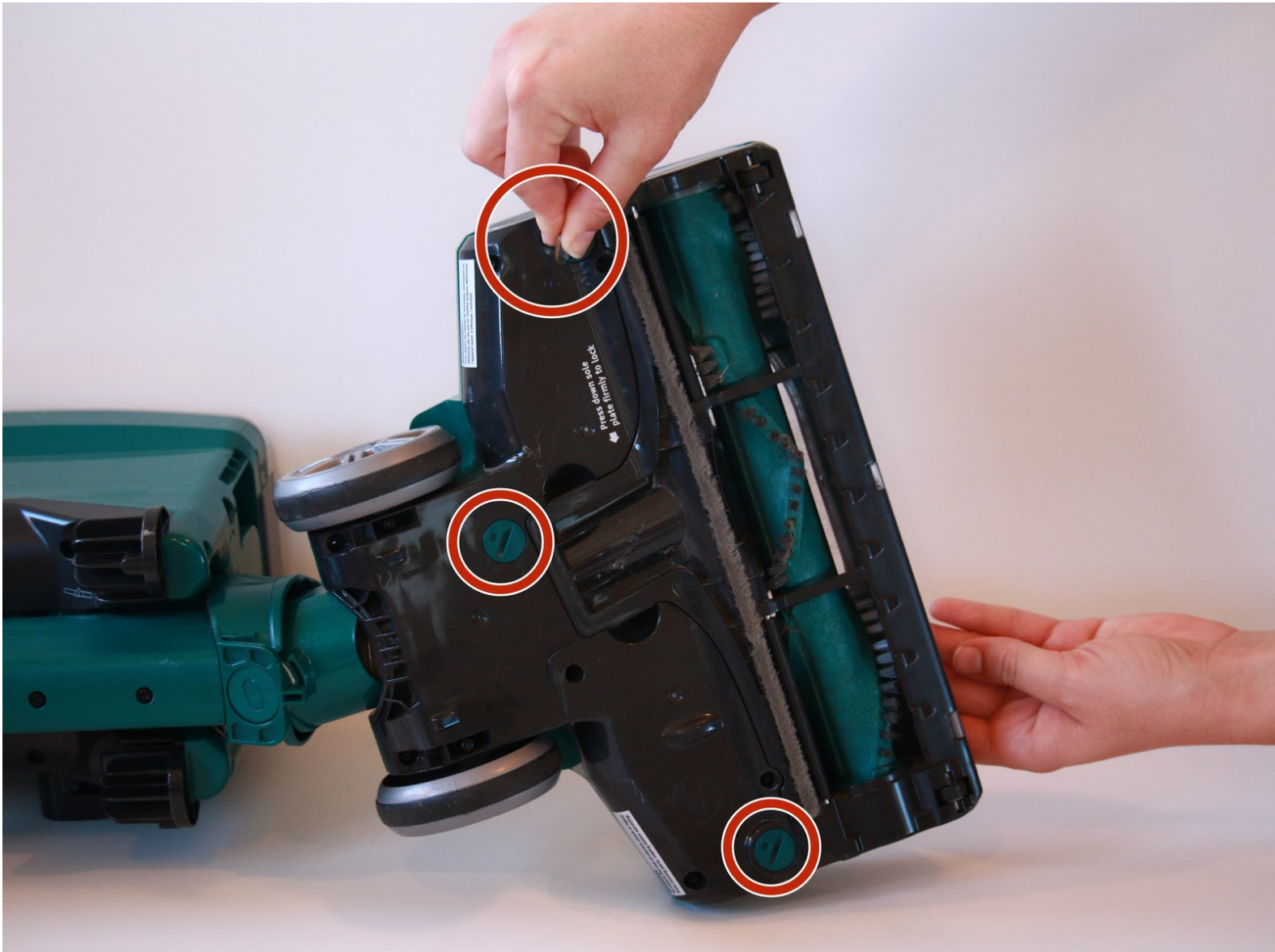




Shark Rotator Powered Lift-Away Speed Belt Replacement

Replacing the belt on the Shark Rotator Powered Lift-Away Speed vacuum.

Written By: Dakota Rodriguez-Ransom



INTRODUCTION

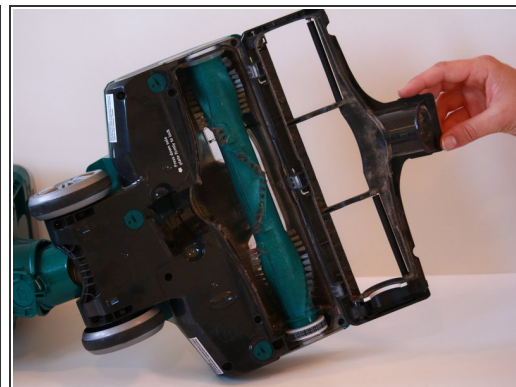
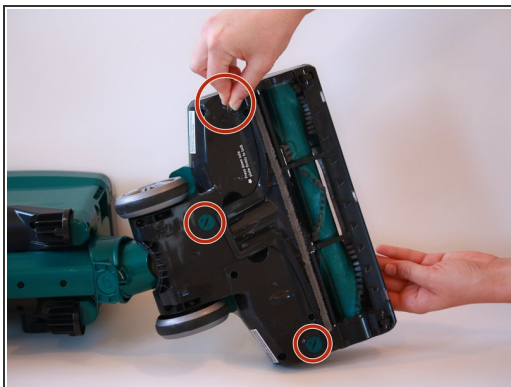
The Shark Rotator Powered Lift-Away has one rotatory belt. The belt is responsible for the mechanical rotations of the brushroll. Without it, the vacuum will not function. The vacuum's belt is designed to last approximately 7 years. Replacement of the belt is needed to keep the vacuum at optimal working condition. This replacement guide demonstrates how to replace the belt in the vacuum.



TOOLS:

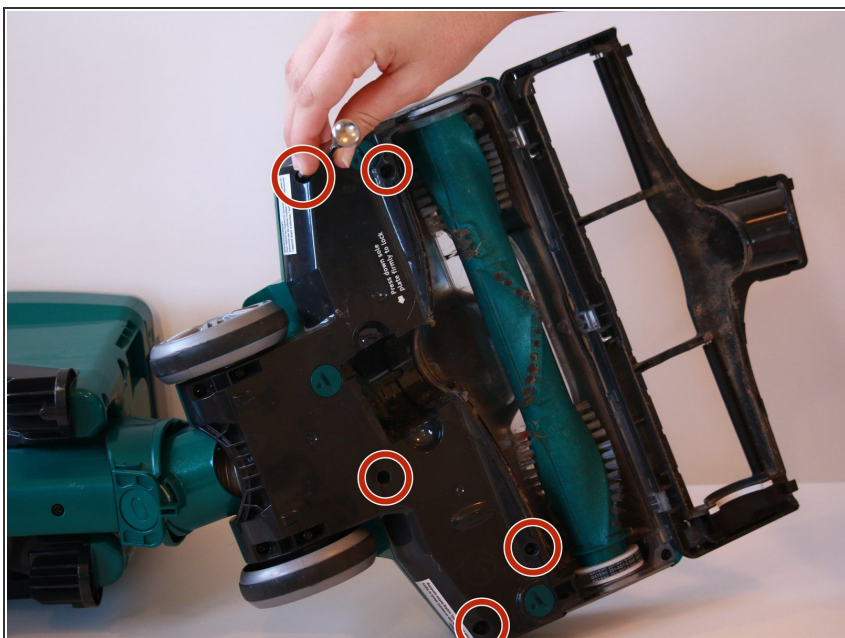
- [Phillips #1 Screwdriver](#) (1)
 - [Spudger](#) (1)
 - [Phillips #0 Screwdriver](#) (1)
 - [T20 Torx Screwdriver](#) (1)
-

Step 1 — Belt



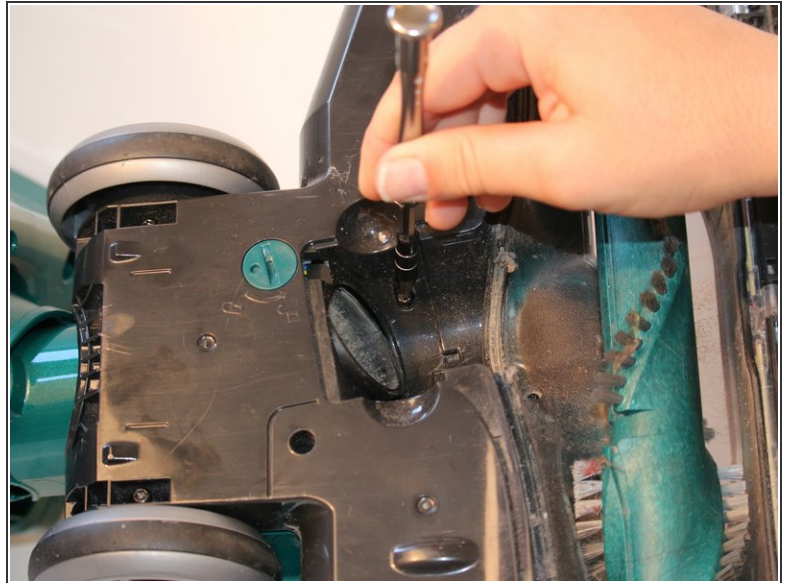
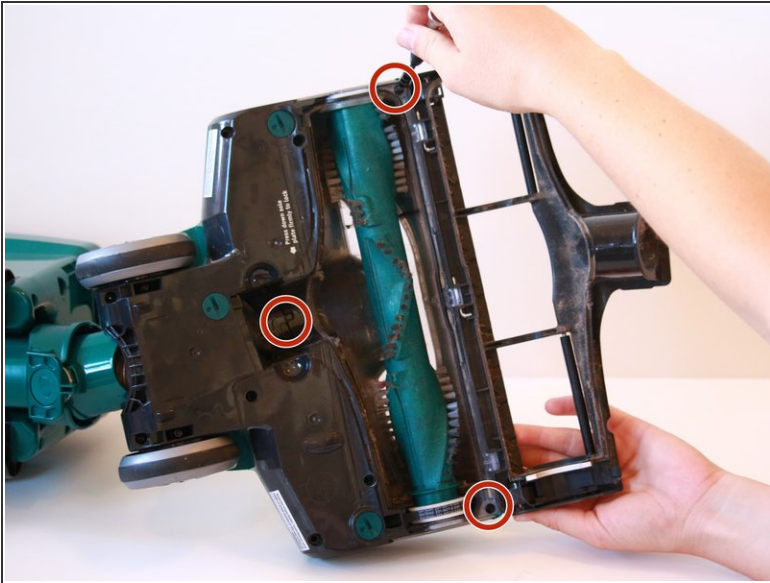
- Turn the vacuum on its side.
- Using a quarter, twist the three green locks to the unlock position.
- Pull the bottom roller brush cover to open the vacuum.

Step 2



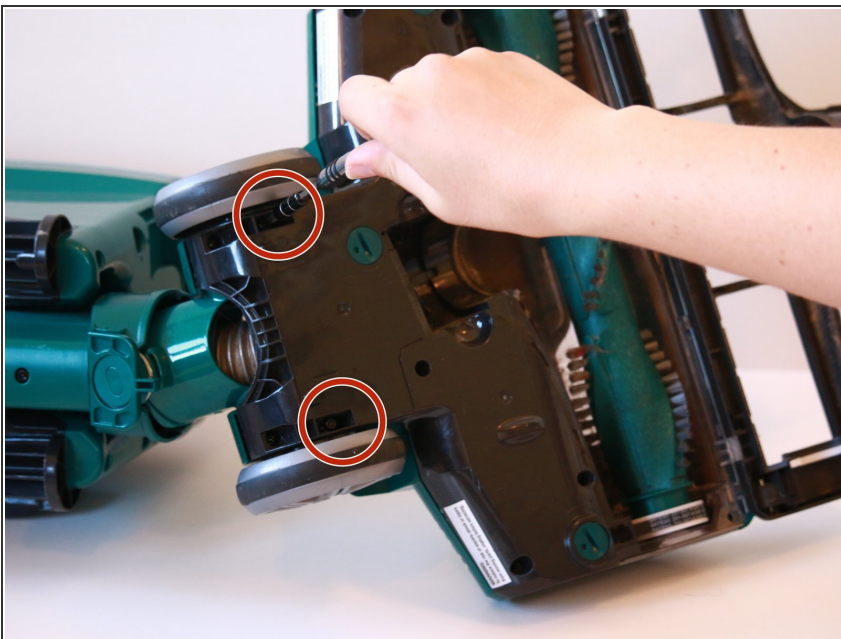
- Using a T20 screwdriver, remove the five 15.9 mm screws on the outside cover.

Step 3



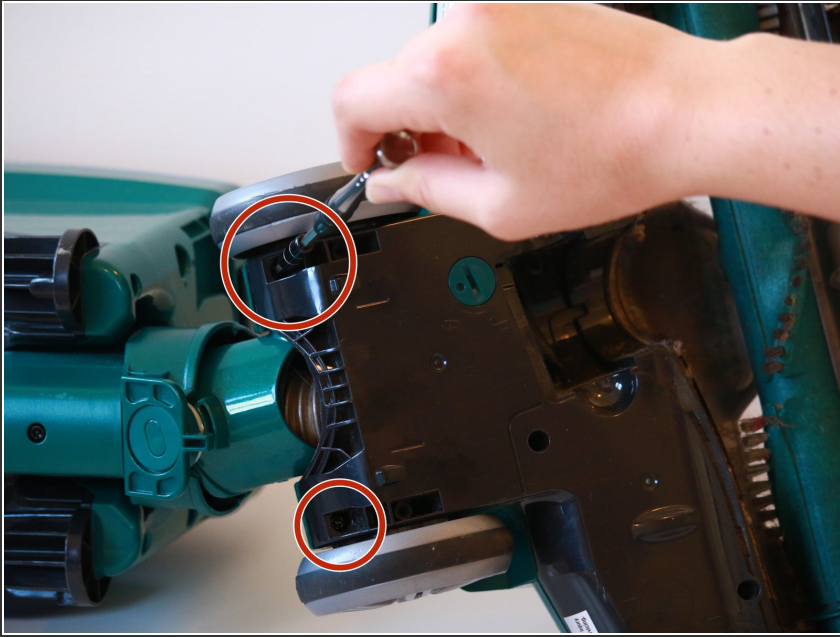
- Remove the three 14.3 mm screws with a T20 screwdriver.

Step 4



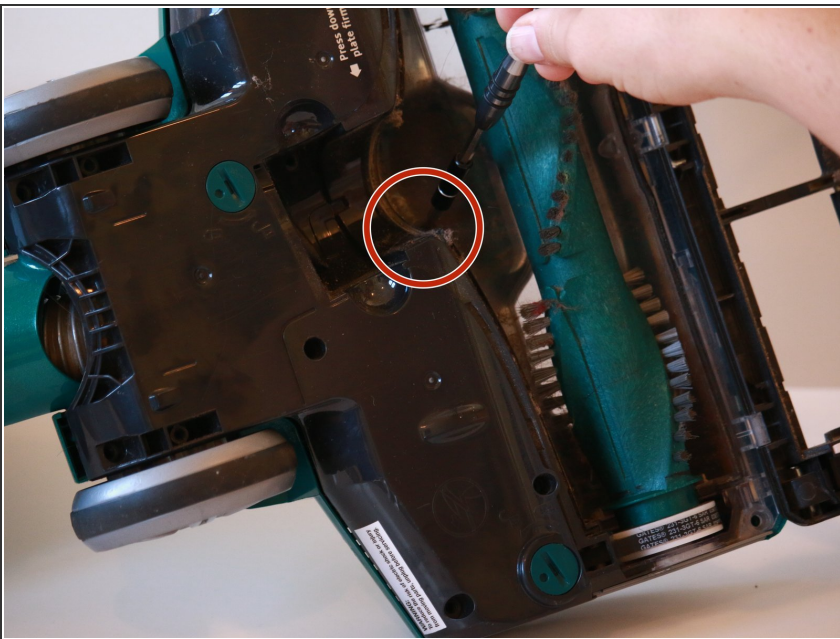
- Remove the two 14.3 mm screws under the wheels with a T20 screwdriver bit.

Step 5



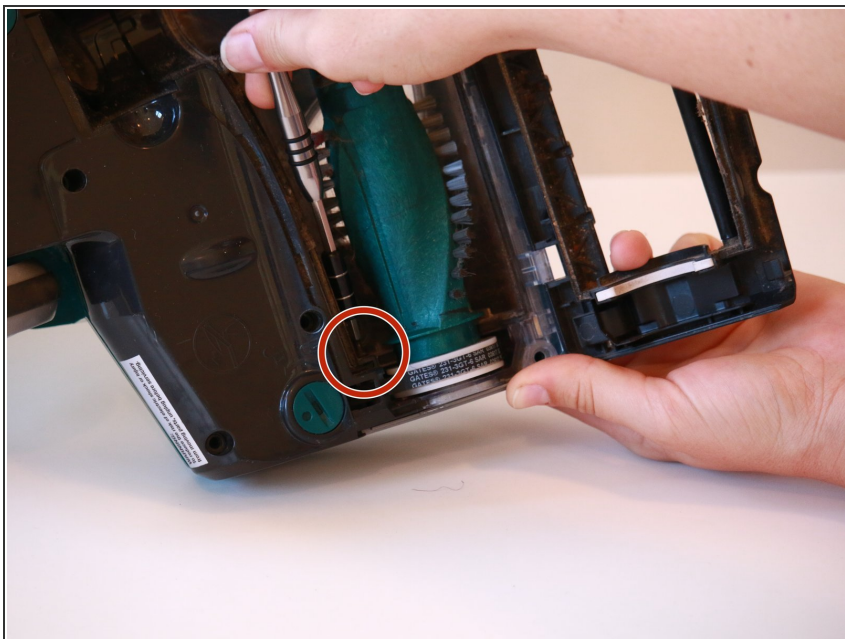
- Remove the two 15.9 mm screws from behind the wheels with a T20 bit screwdriver.

Step 6



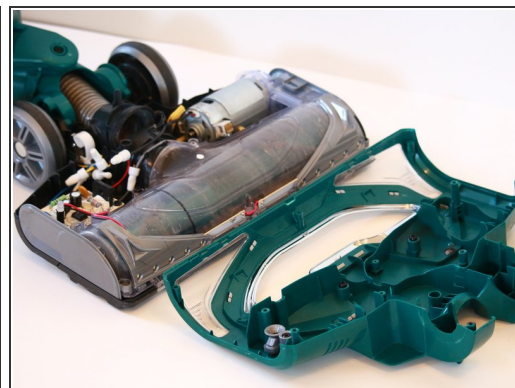
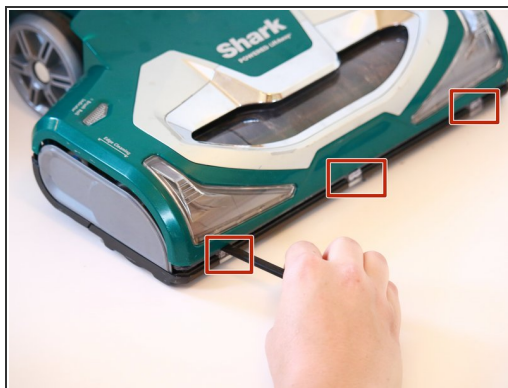
- Remove the single 13.4 mm small screw behind the roller brush with a PH0 screwdriver bit.

Step 7



- Remove the single 13.4 mm screw from behind the belted end of the roller brush with a T20 screwdriver bit.

Step 8



- Turn the vacuum around.
- Using a spudger, pry the top of the vacuum cover off. There are three tabs behind each of the clear rectangles below the headlights.

Step 9



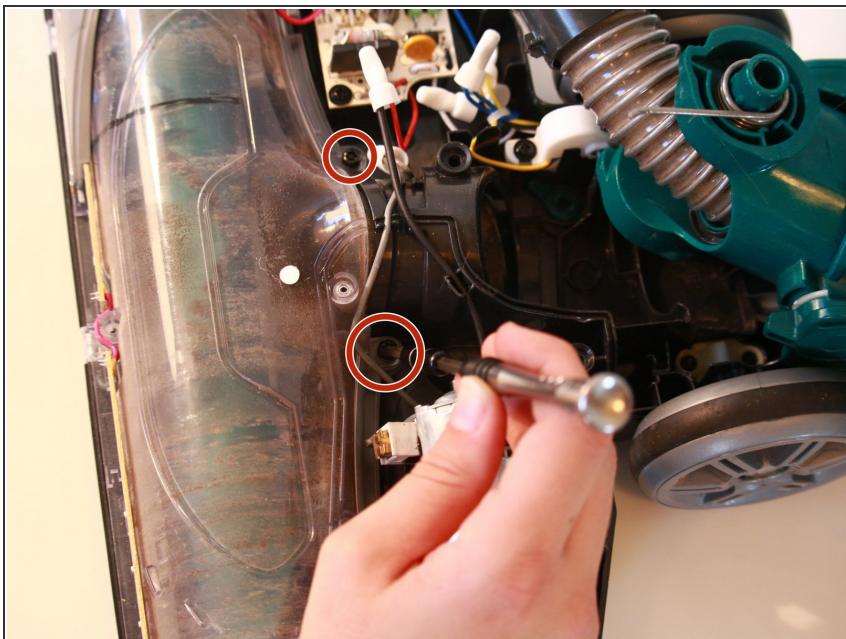
- Remove both of the headlight covers with the spudger.

Step 10



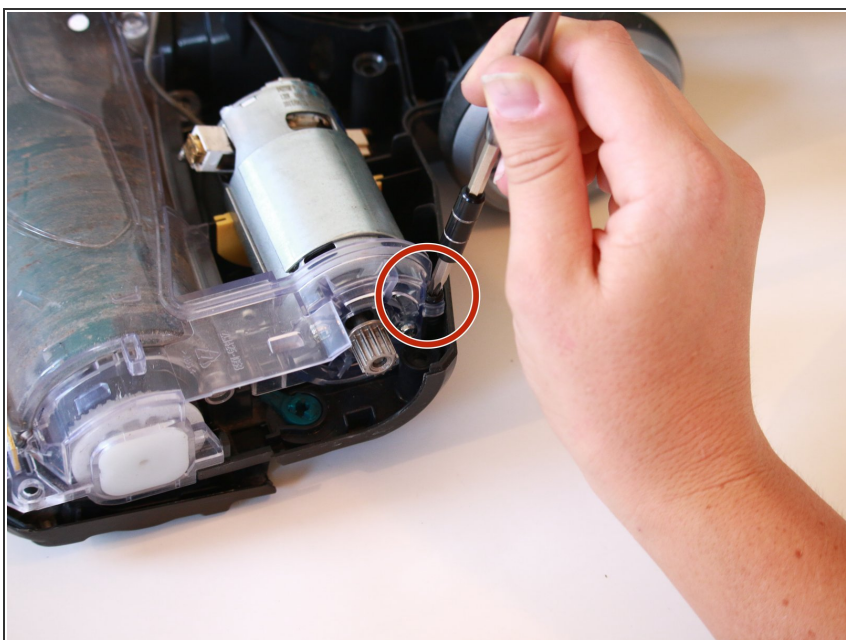
- Remove the grey side panel on the motor side of the vacuum with a spudger. Pry under each tab to release the side panel.

Step 11



- Remove the two 13.4 mm screws with a T20 bit screwdriver.

Step 12



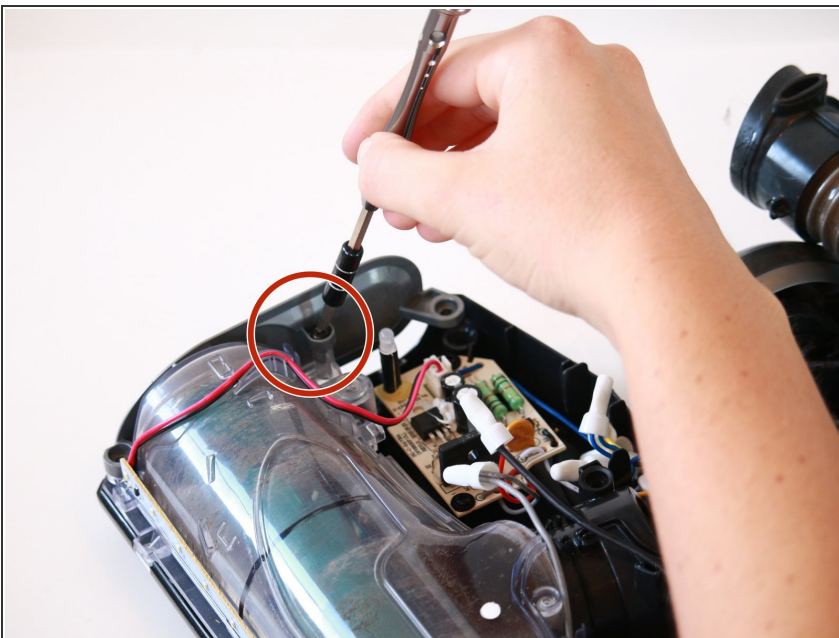
- Remove the single 13.4 mm screw located next to where the belt was detached, securing the motor in place, with a PH1 screwdriver.

Step 13



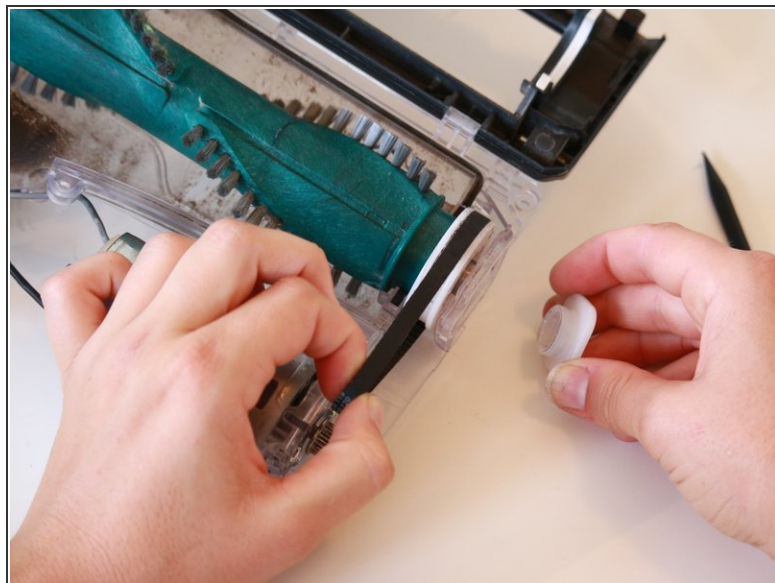
- Remove the visible side of the belt from the gear with a spudger.

Step 14



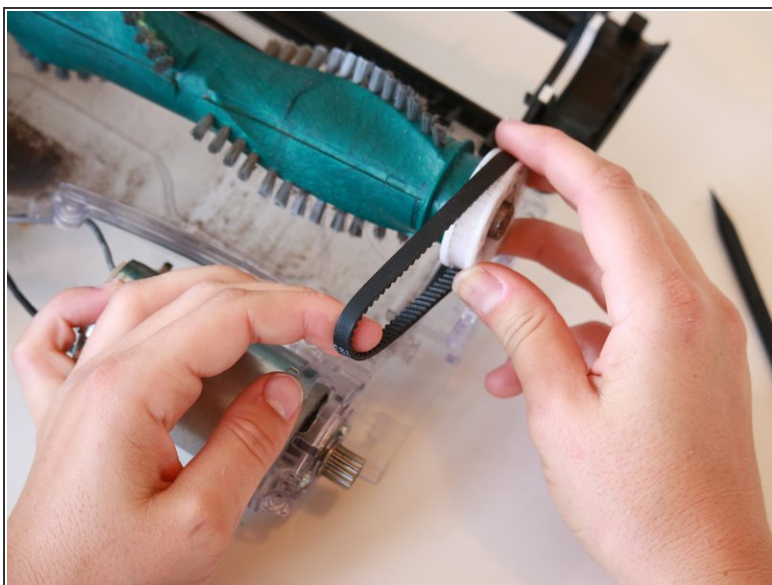
- Remove the grey panel from the opposite side, by uncrewing the single 13.4 mm screw with a PH1 screwdriver. This will release the container for the roller brush and belt motor.

Step 15



- Using the spudger, push the white end cap out of the clear plastic by placing the spudger on the roller brush side and pushing the cap outward.

Step 16



- Remove the belt from the gear.

To reassemble your device, follow these instructions in reverse order.