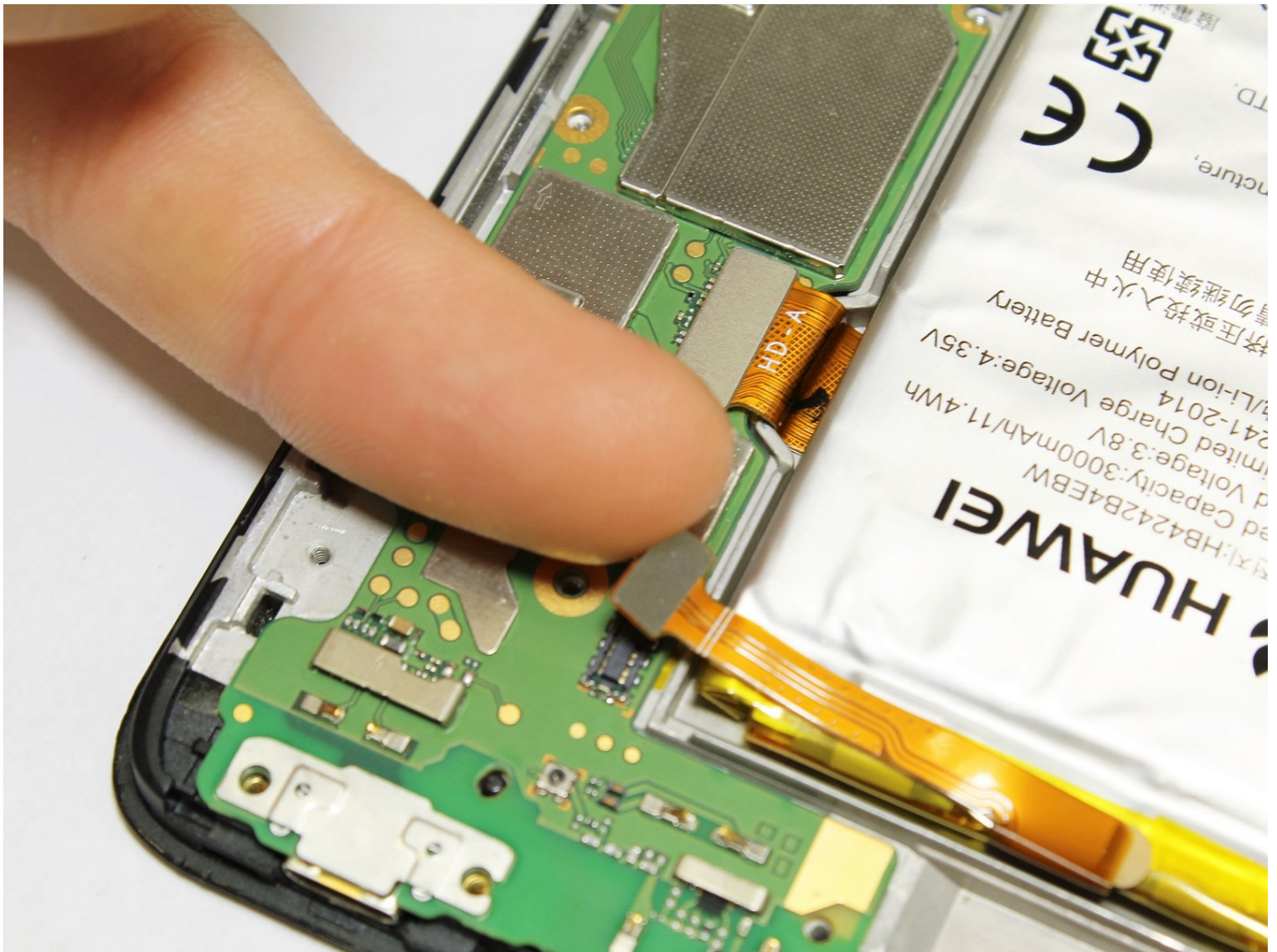




Huawei Ascend XT Battery Replacement

In this guide, you will be shown how to...

Written By: Jimmy Shields



INTRODUCTION

In this guide, you will be shown how to disassemble your Huawei Ascend XT phone and remove the faulty battery so that you can replace it with a new one. You must have a new battery ready to complete this guide. Be sure to use only the parts shown in the guide, and follow the directions carefully as to not damage the device. The device must be shut off and unplugged from the charger before starting this guide.

TOOLS:

[Spudger](#) (1)

[iFixit Opening Tool](#) (1)

[SIM Card Eject Tool](#) (1)

[Essential Electronics Toolkit](#) (1)

Step 1 — Battery



- Use the 0.8 Sim driver bit to remove the SIM tray by inserting it into the hole on the side of the device.
- Once the hole is pressed in firm, the SIM tray will pop out. This allows you to grab it, and extract it from the device.

Step 2



- Make a thumbs-up and use it to grip the plastic opening tool with the flat end pointing in the direction of your thumb.
- Place the flat end of the opening tool slightly inside the charging port and place your thumb on the back of the phone.
- Press into the phone with your thumb while pulling the opening tool back with your fist to begin prying the back off.

Step 3



- Slide the flat end of the spudger along the edge of the device, prying off the back cover.
- Carefully remove the back cover. This may be difficult due to glue on the inside.

Step 4



- Use a Phillips screwdriver to remove 20 screws around the perimeter of the phone.

Step 5



- First, carefully remove the speaker assembly at the bottom of the phone.
- Use a spudger to pry up the antenna assembly located along the top right-hand side of the phone.
- Use a spudger to pull off the top-left tab.
- Finally, carefully remove the entire back plate assembly from the motherboard.

Step 6



- Place the tip of your spudger or opening too under the edge of the connector, and pry the battery connector straight up from its socket.

Step 7



- Use the spudger to pry the lithium battery away from battery compartment.

- ✦ Insert new battery and connect.

To reassemble your device, follow these instructions in reverse order.