



HP Deskjet 1055 Scanner Glass Pane Replacement

If your scanner/copier glass breaks, follow these steps to replace.

Written By: Samuel Isbell



INTRODUCTION

Without the scanner glass pane, your printer cannot complete two of its three major functions. Replace a broken one to keep your printer fully-functional.



TOOLS:

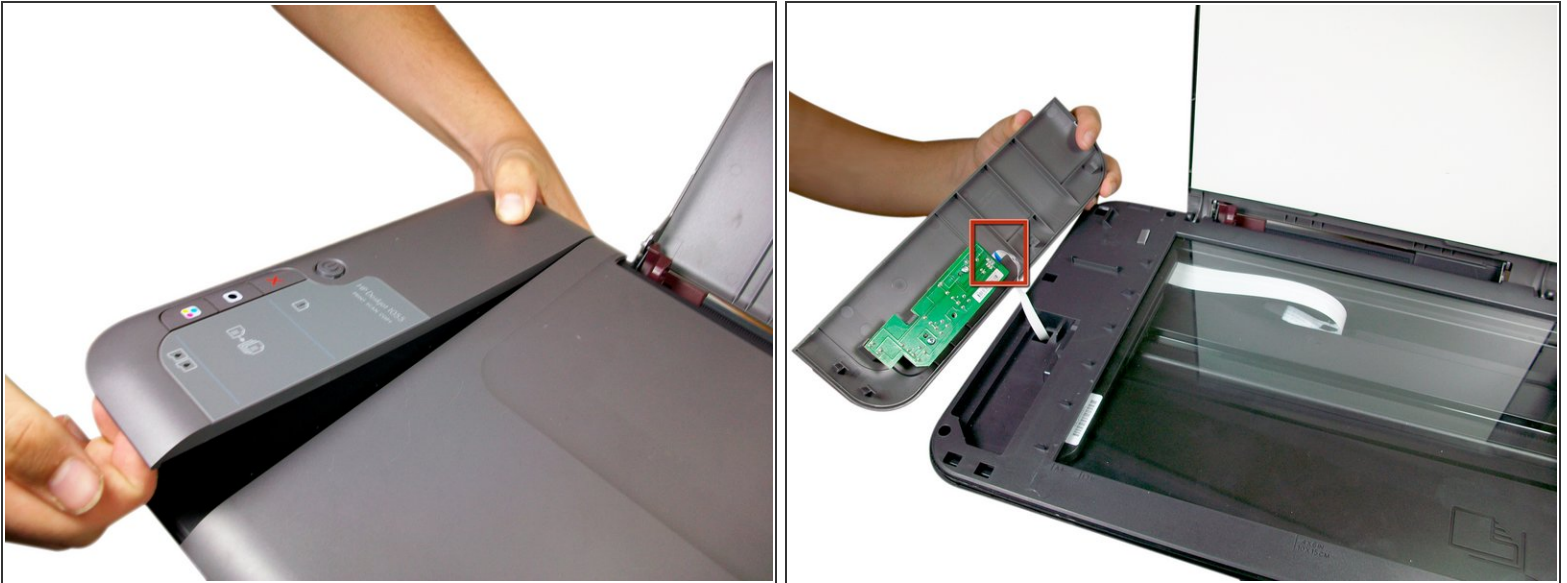
- [iFixit Opening Tools](#) (1)
 - [T10 Torx Screwdriver](#) (1)
-

Step 1 — Scanner Glass Pane



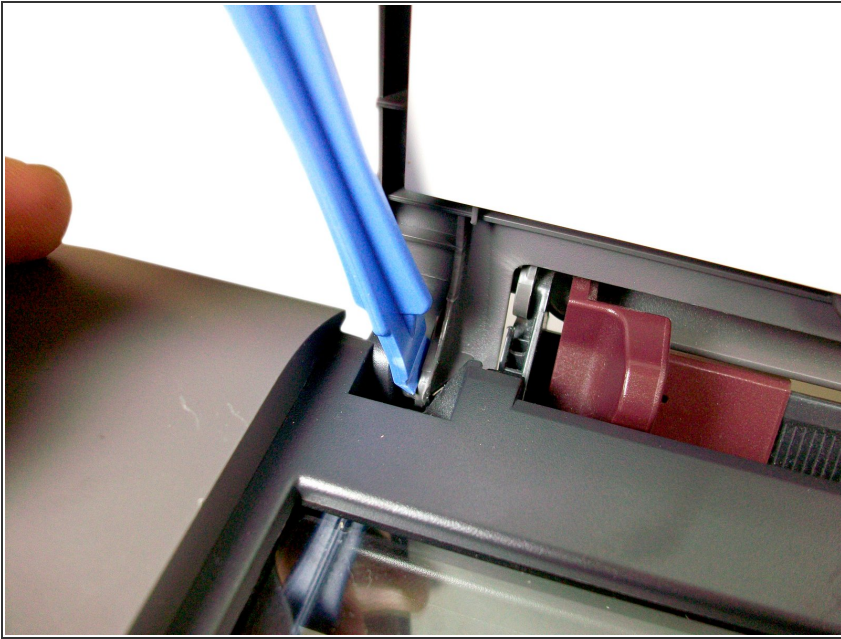
- Take all paper out of the paper tray. Unplug the printer.
- Remove the plastic printer-control panel on the top left.
- Then, forcefully lift up the bottom of the panel while applying downward pressure with your thumb-as shown.

Step 2



- With your other hand, slide the top of the panel towards the back of the printer.
- ⚠ Do not rip the white cable that connects the panel with the main body of the printer.
- Disconnect the ribbon by pinching the blue tab and pulling away from the green circuit board.
- Lift the panel free and set to the side.

Step 3



- Place the plastic opening tool between the plastic cover and the mount on the printer.
- Pry the plastic cover towards the center of the printer.
- Pull up on the cover to remove it from the printer-as shown.
- Repeat the process on the other side.

Step 4



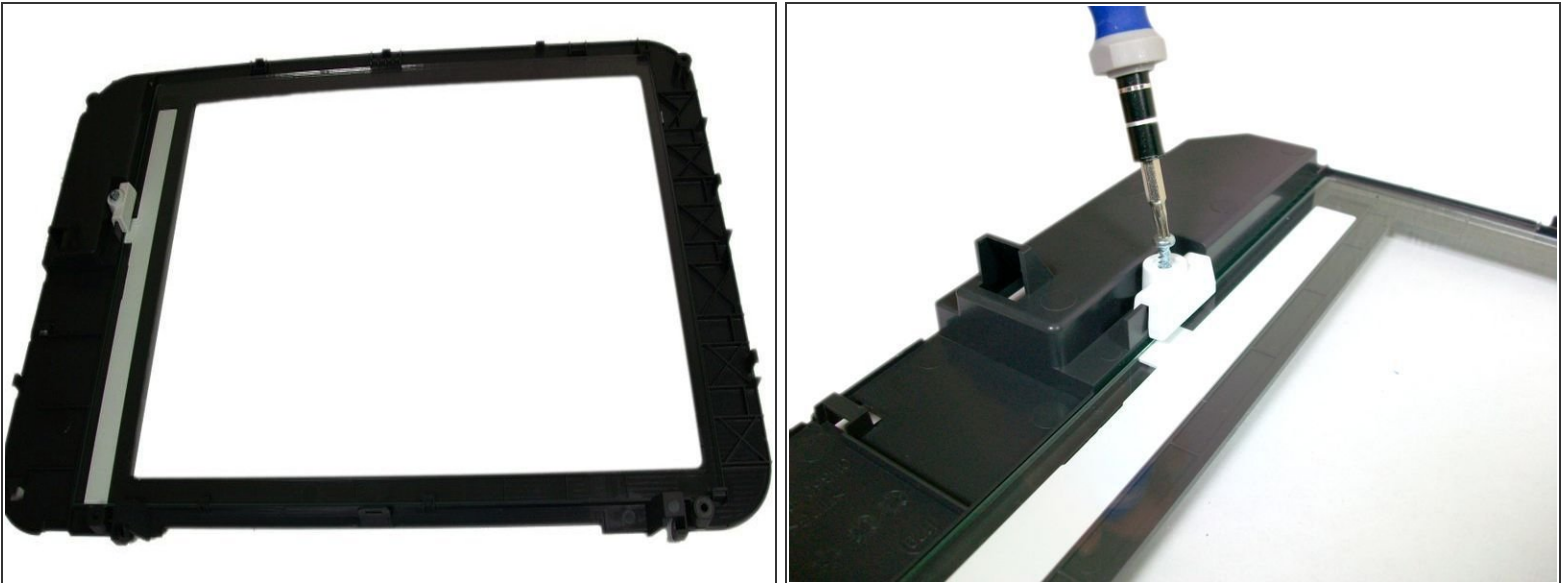
- To remove the glass panel, take out the four 14 mm (1/2 inch) screws with a T10 Torx screwdriver.
- ⚠ Don't lift the glass panel completely off because there are cables plugged into the underside.

Step 5



- Disconnect the white cables from the green motherboard by pinching the cable where it connects to the green motherboard. Pull up, lightly.
- Set the lower part of the printer aside.

Step 6



- Place the glass panel, face down, on a smooth surface.
- Remove the 14 mm (1/2 in.) screw from the white plastic tab on the side of the panel with a T10 Torx screwdriver.

Step 7



- Remove the glass pane by carefully bending the plastic frame down from the side and sliding the glass pane out from the side.

To reassemble your device, follow these instructions in reverse order.