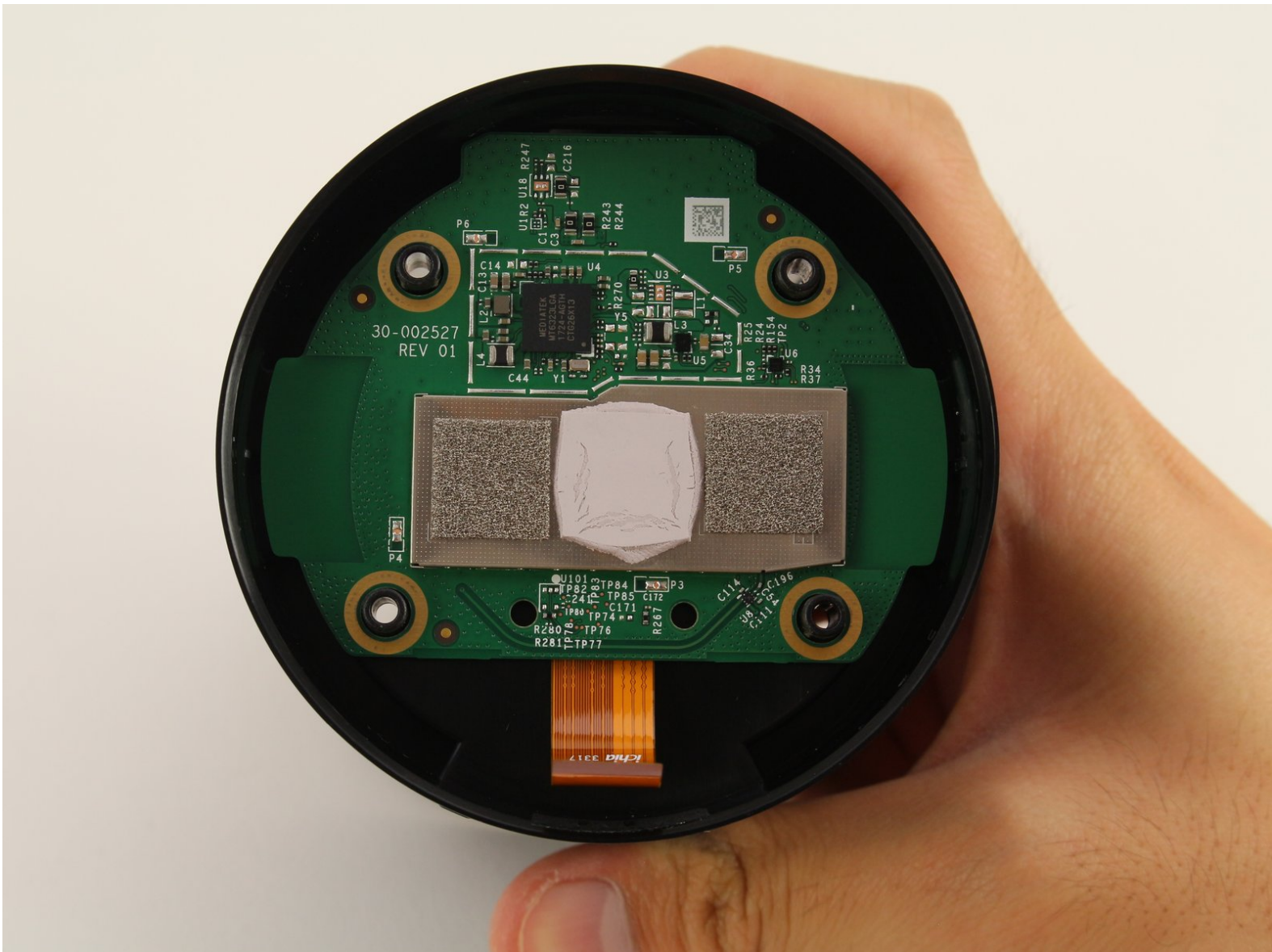




# Amazon Echo 2nd Generation MLB Board Replacement

How to replace the MLB Board in the Amazon Echo 2nd Generation.

Written By: Billy Pho



---

## INTRODUCTION

The MLB board handles the primary functions of the Echo device (e.g. Alexa A.I., Bluetooth, WiFi). Follow this guide to replace this component if any of these functions are not working as intended.

---



### TOOLS:

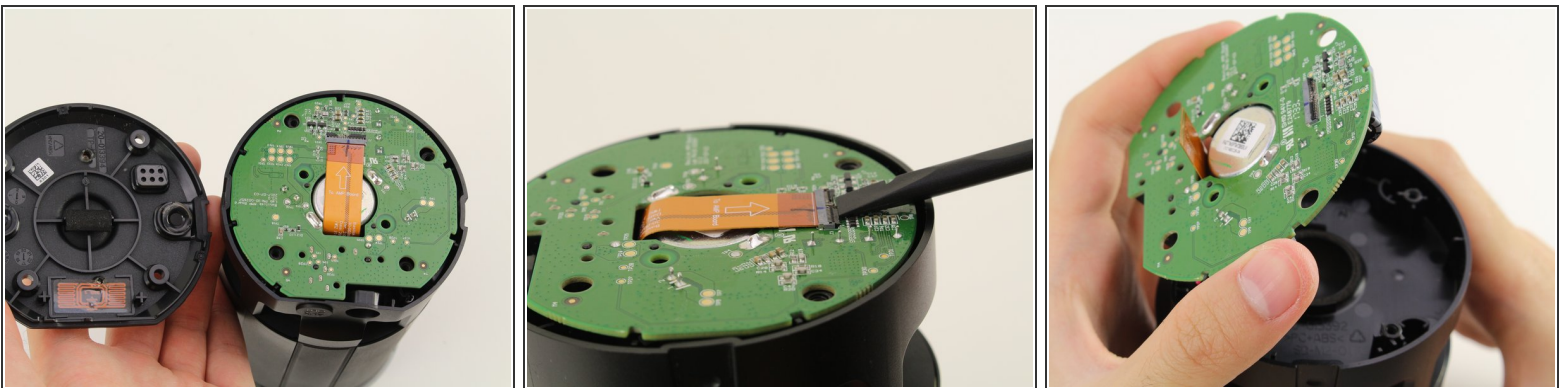
- [T8 Torx Screwdriver](#) (1)
  - [Spudger](#) (1)
-

## Step 1 — AMP Board



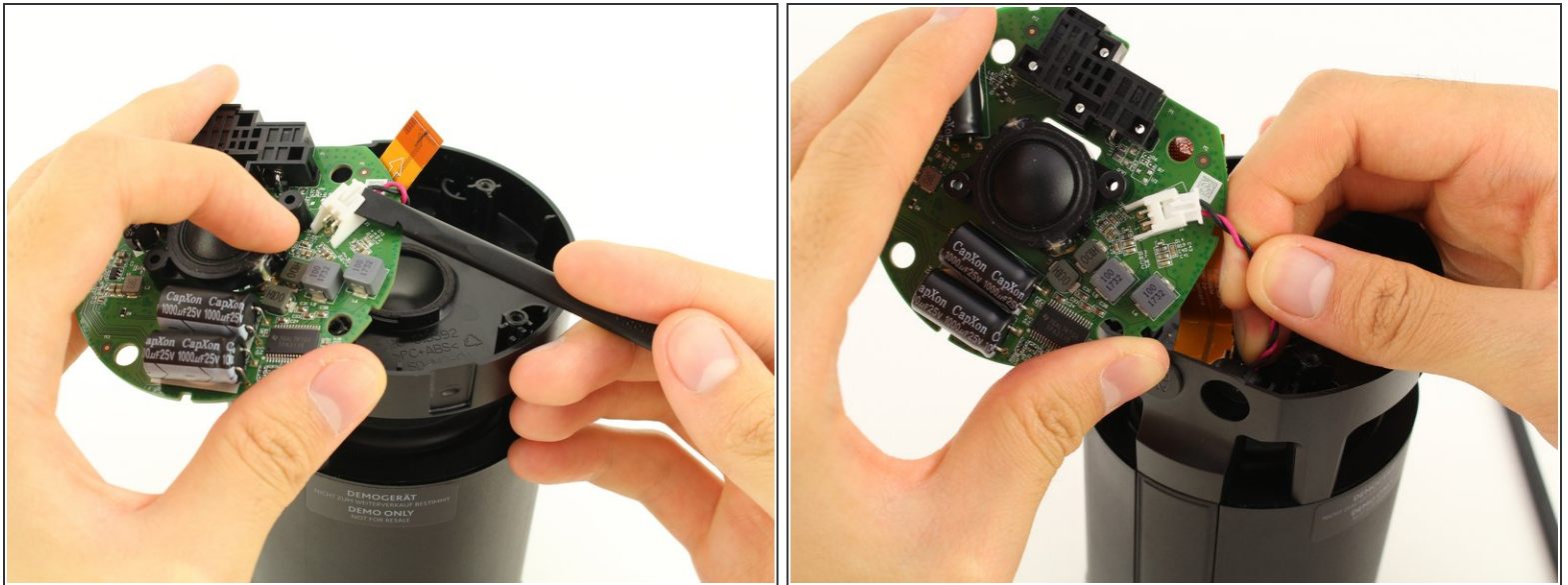
- Remove the rubber layer beneath the device.
- Look for the crater beneath the rubber layer and place your thumb on it. Hold down and lift off the cover with your other hand.
- Remove the four 8.0 mm T8 Torx screws on the lid.
- Remove the lid from the device.

## Step 2



- Use a spudger to flip up the small flap on the ZIF connector.
- Gently pull the ribbon cable out of the ZIF connector.
- Lift the AMP Board gently while sliding the ribbon cable out through the center hole to reveal another set of wires underneath the board.

## Step 3



- Use a spudger to lift up one of the small flaps on only one side of the female connector.
- Pull on the wire toward the lifted side until the male connector is disconnected.
- Remove the AMP Board.



## Step 4 — Subwoofer (speaker)



- Remove the four 30.0 mm T8 Torx screws in the corners.
- Remove the large plastic piece on top of the subwoofer while threading the ribbon cable and male connector through the hole.

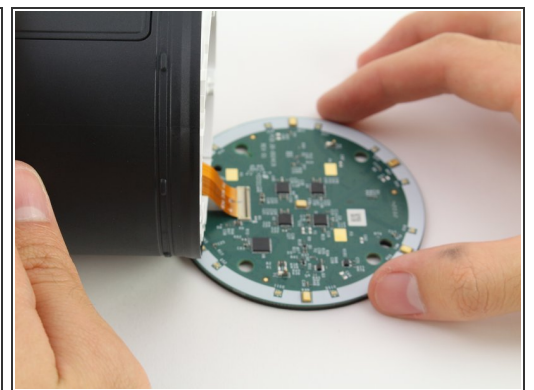
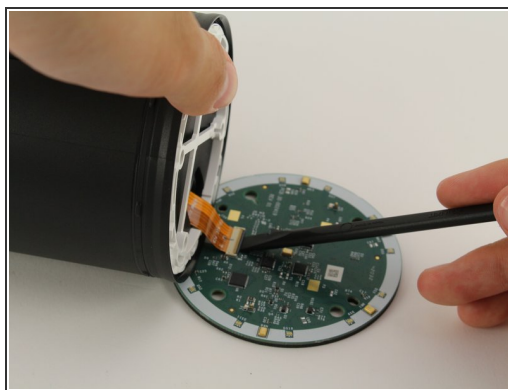
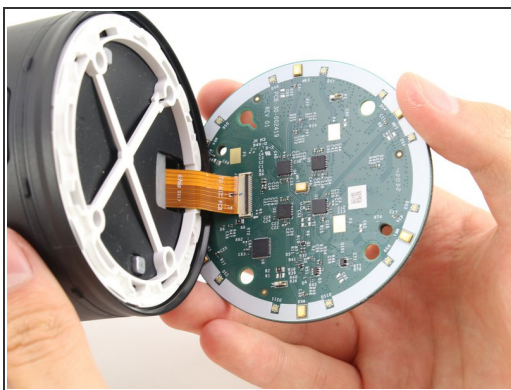
## Step 5



- Remove the lid on top of the subwoofer.
- Flip the device over and let the subwoofer fall into your hand.

⚠ The subwoofer is a strong magnet. Keep it away from any other electronics and unshielded wires.

## Step 6 — MIC Board



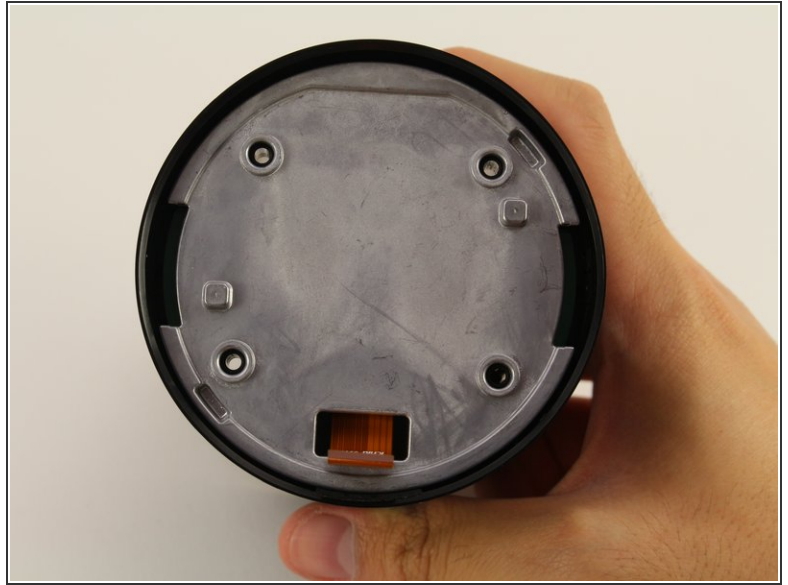
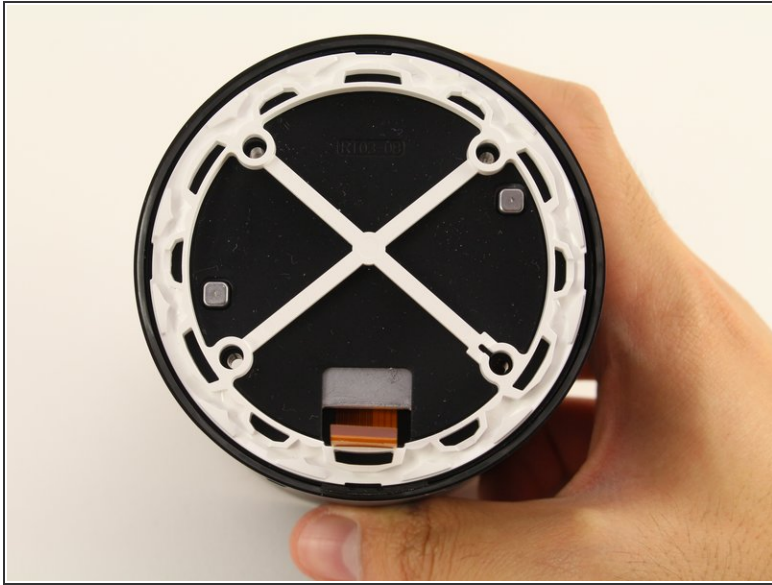
- Lift the MIC board over and lay it down against a surface.
- Use a spudger to flip up the small flap on the ZIF connector.
- Disconnect the ribbon cable from the MIC board and pull the board away.

## Step 7 — Front Cover Panel



- Remove the four 16.0 mm T8 Torx screws underneath the speaker.
- ⚠ Once you unscrew the four 16.0 mm T8 Torx screws, the remaining components of the device have no support. Take caution when flipping the device over to avoid damage to the remaining components.
- Flip the device over while supporting the front panel side.
- Remove the front panel cover by lifting it.

## Step 8 — MLB Board



- Remove the white plastic shielding and the black silicon cover.
- Remove the metal cover beneath the black silicon cover.



## Step 9



- Carefully lift up the MLB board. Underneath it is another ZIF connector. Use a spudger to flip the small flap on the ZIF connector.
- ⓘ This will take a few tries to get it done correctly. Remember to not use too much force as you do not want to damage the ZIF connector.
- Remove the MLB Board by flipping the device over and letting it fall into your hands.
- ★ Completely remove the ribbon cable from the case, reattach it to the MLB board, then place the board and ribbon cable back into its original position.

To reassemble your device, follow these instructions in reverse order.