



# Dell Inspiron 5758 LCD Screen Replacement

This is a guide for replacing the LCD screen of a Dell Inspiron 5758.

Written By: Blase Martin



# INTRODUCTION

This guide will show you how to replace the LCD Screen on the Dell Inspiron 5758.

Prerequisite guides are:

- [Battery](#)
- [Hard Drive](#)
- [DC Jack](#)
- [Keyboard](#)



## TOOLS:

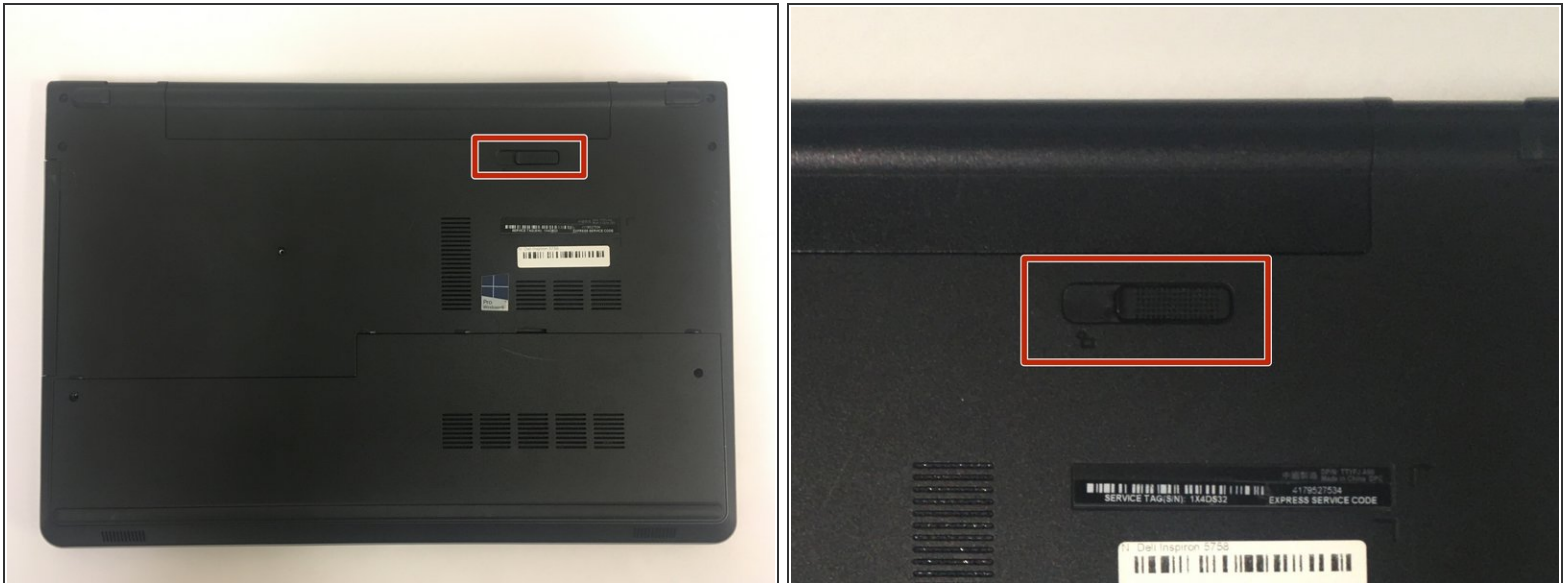
- [iFixit Opening Tools](#) (1)
- [Metal Spudger](#) (1)
- [JIS #000 Screwdriver](#) (1)
- [JIS #00 Screwdriver](#) (1)
- [Spudger](#) (1)



## PARTS:

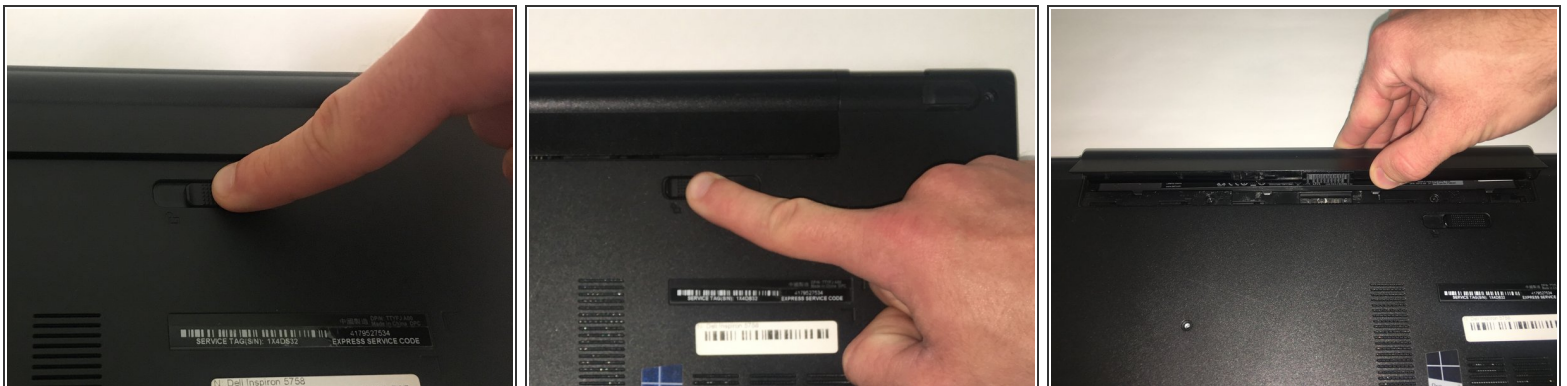
- [Dell Inspiron 17 5758 17.3 FHD EDP LCD Widescreen Matte](#) (1)

## Step 1 — Battery



- Flip the laptop with the serial number facing up. You should be able to see the battery release switch.

## Step 2



- Slide the battery release switch towards the unlock icon.
  - ❗ You should hear a click.
- Lift and pull the ejected battery to remove it.

## Step 3 — DC Jack



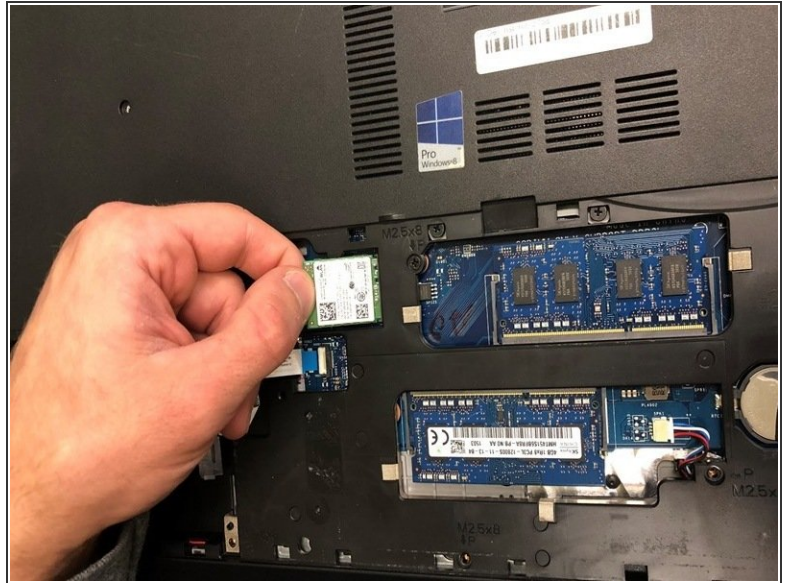
- Remove the one 3mm optical drive screw.
- Remove the two 8 mm screws.
- Pry up and remove the access door.

## Step 4



- Remove the one 3 mm screw.
- Remove the bracket.

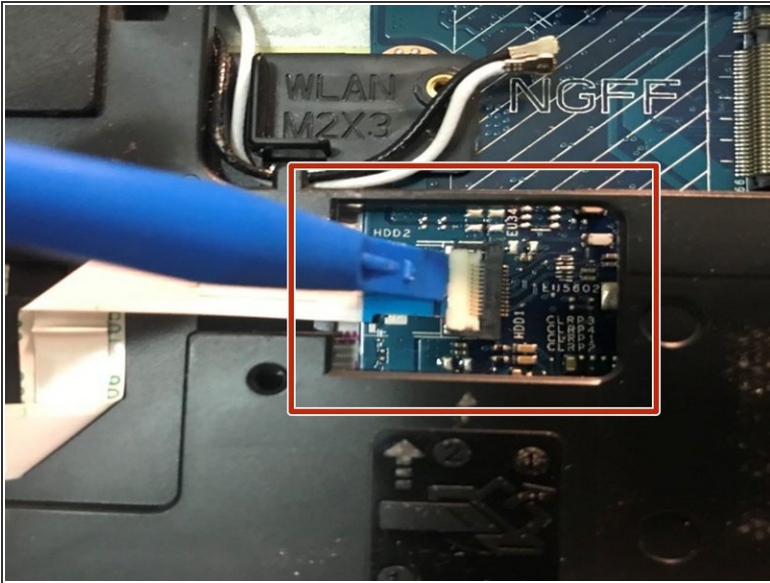
## Step 5



- Unplug the antenna cables.
- Remove the Wireless Card.

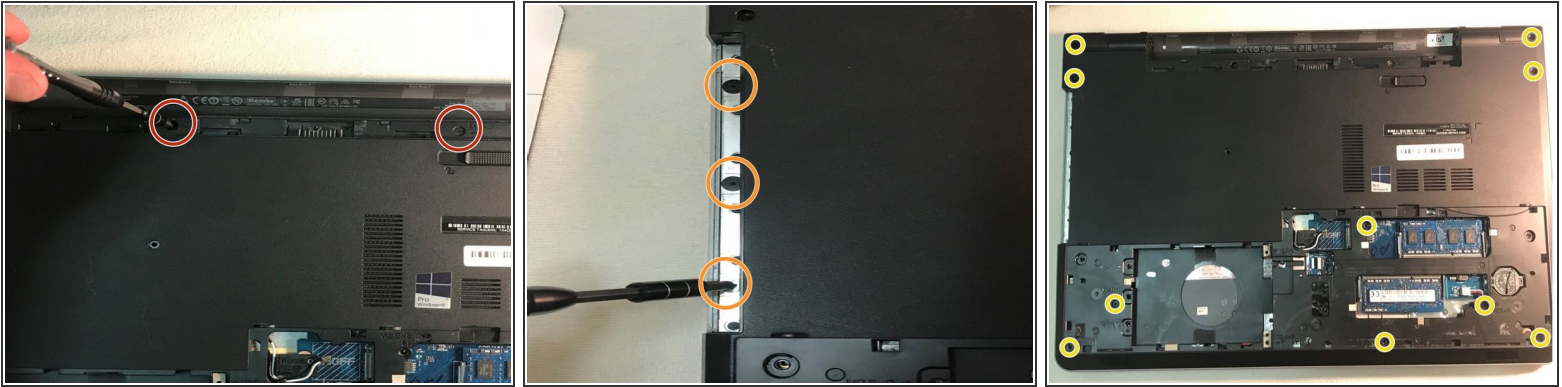


## Step 6



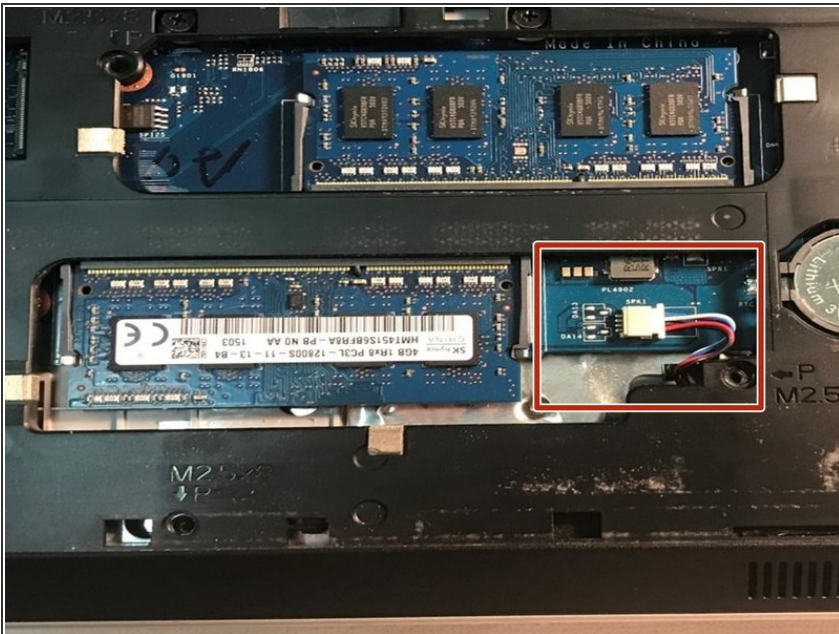
- Unplug the hard drive cable.
  - Use a plastic opening tool or your fingernail to pop the tab of the cable connector. Then you will be able to disconnect the cable.
- Remove the four 8 mm screws.
- Remove the hard drive.

## Step 7



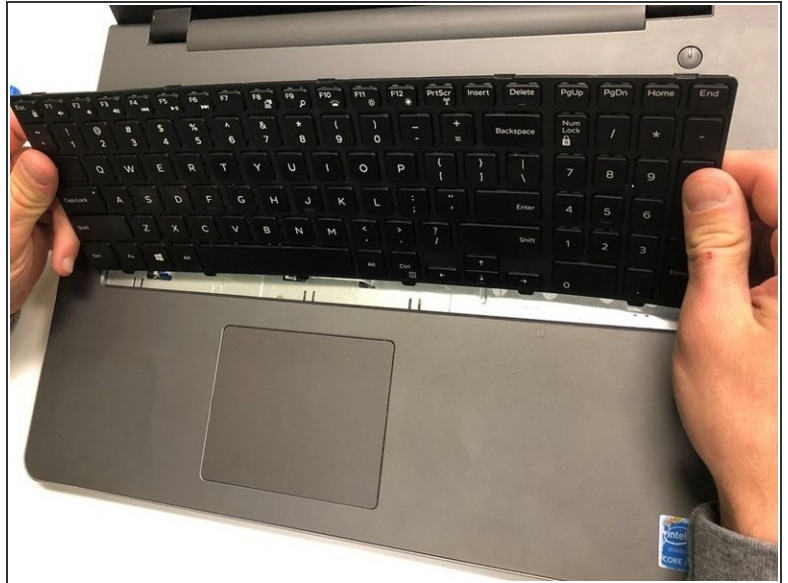
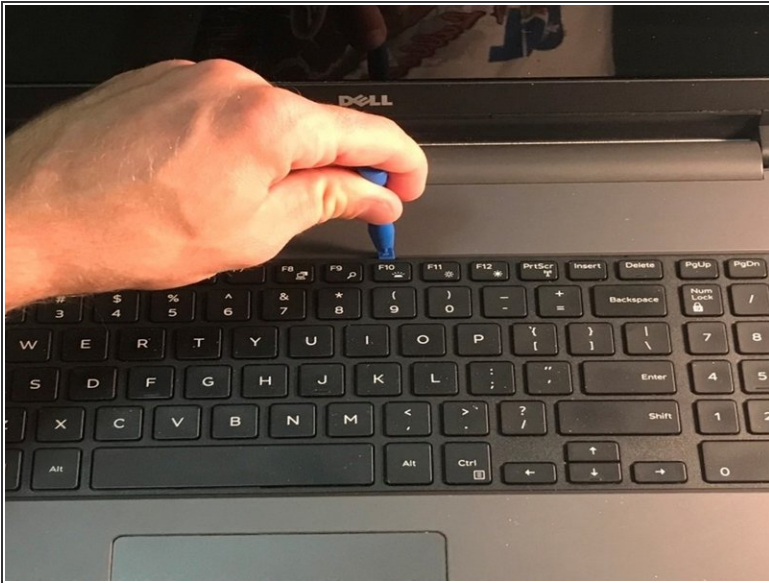
- Remove the two 3 mm screws under the battery.
- Remove the three 2 mm wafer screws under the optical drive.
- Remove the ten 8 mm base screws.

## Step 8



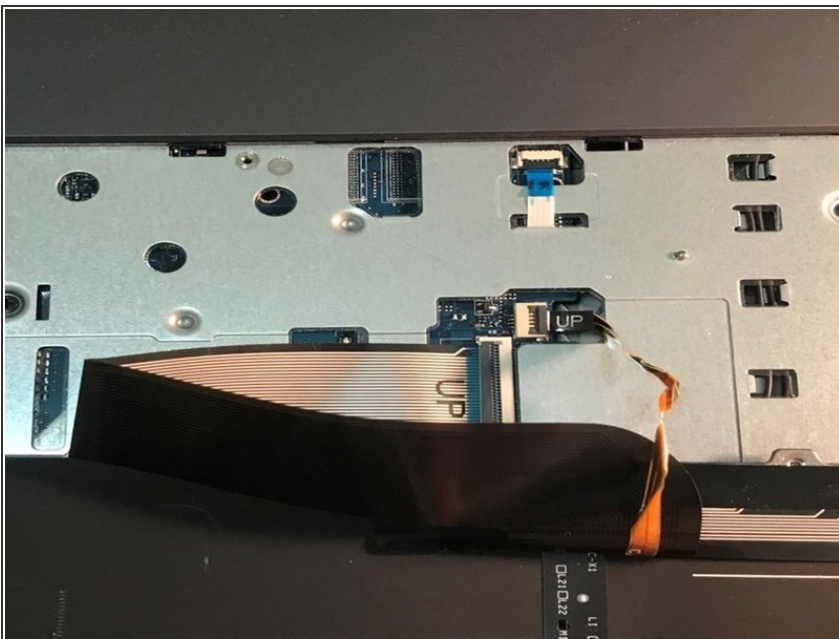
- Unplug the speaker cable by sliding to the right.

## Step 9



- Press in the tabs to loosen the keyboard.
- Carefully lift the keyboard up and turn it over.

## Step 10



- Unplug the keyboard cable & remove the keyboard.

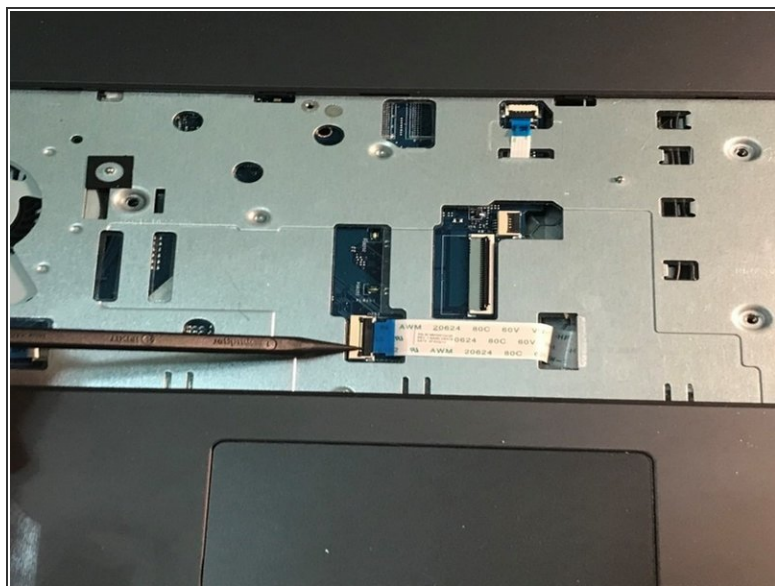
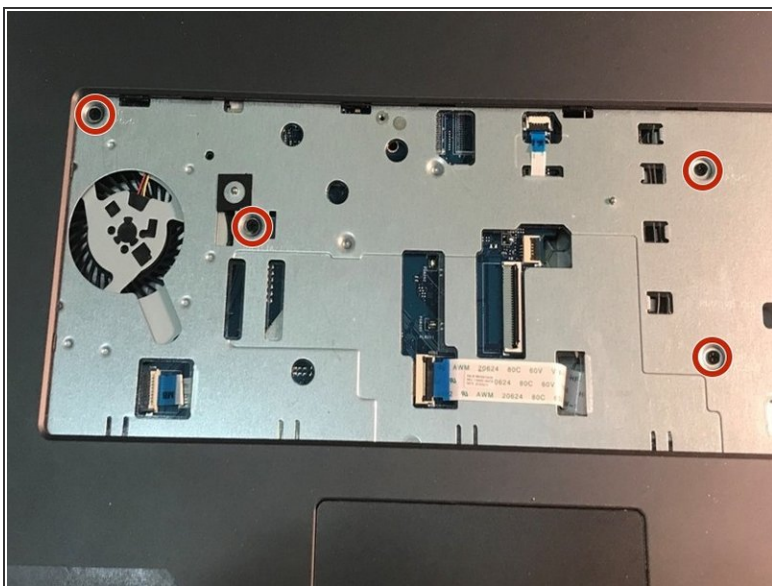


## Step 11



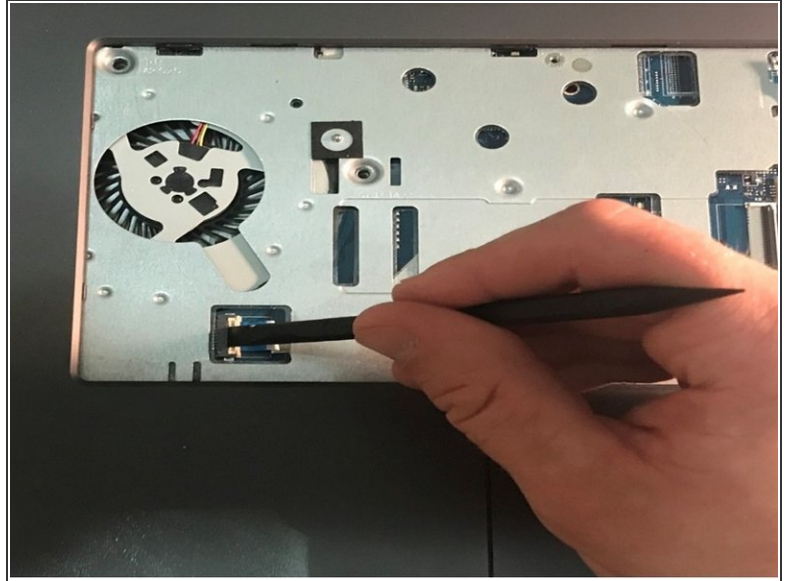
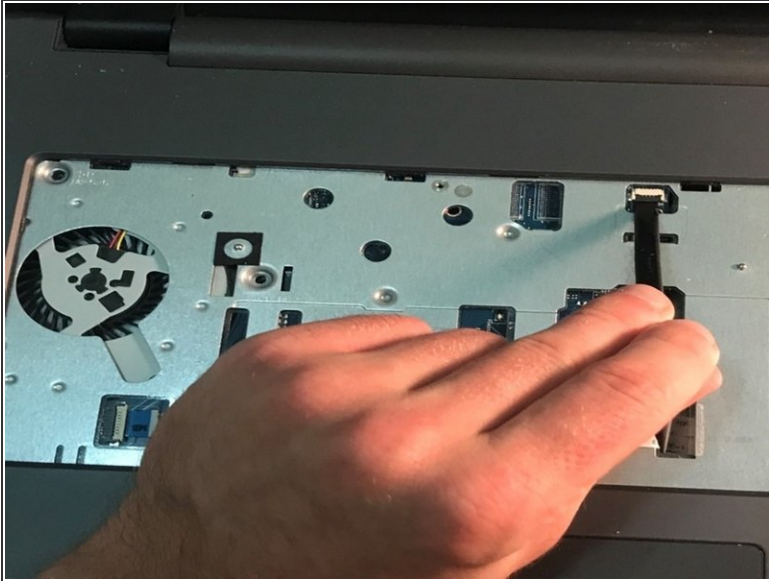
- Slide the DVD optical drive over & remove it from the laptop.

## Step 12



- Remove the four 5 mm screws.
- Unplug the optical drive interposer cable.

## Step 13



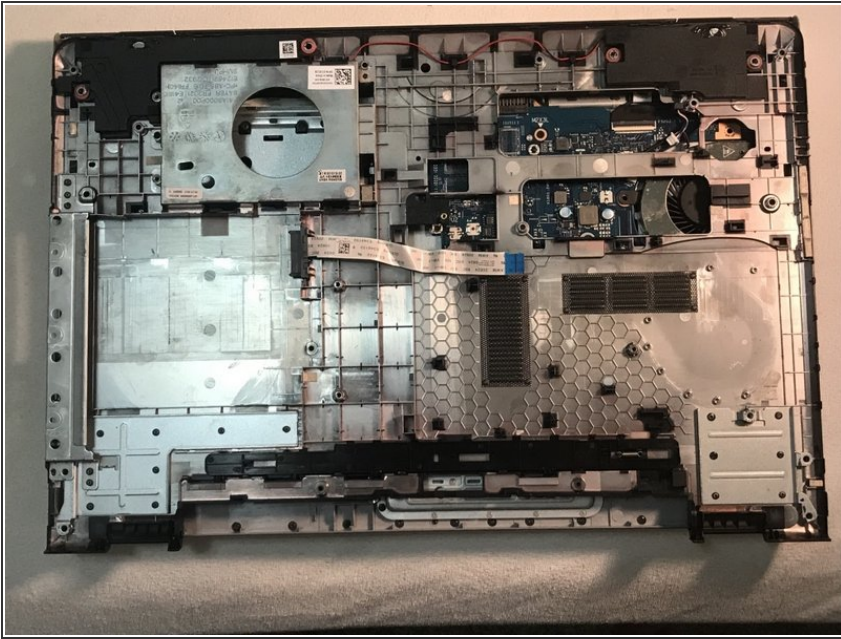
- Unplug the power button cable.
- Unplug the touchpad cable.

## Step 14



- Carefully pry off & loosen the bottom base.

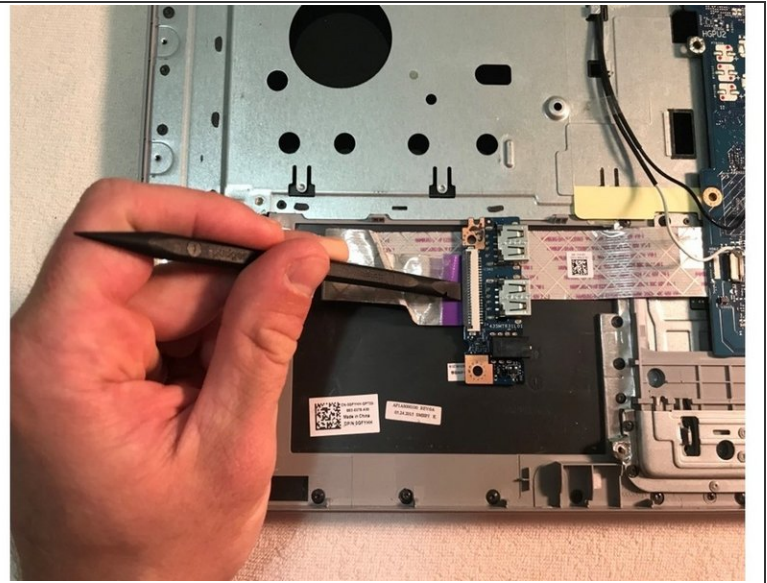
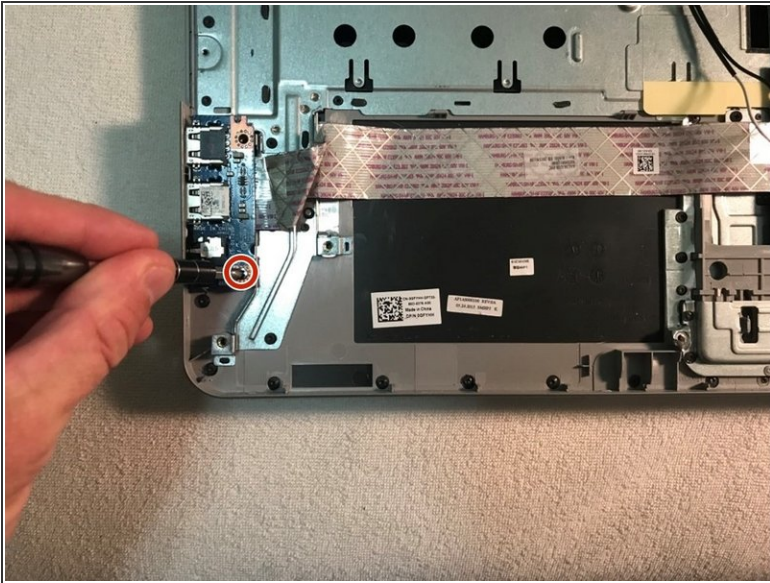
## Step 15



- Remove the bottom base.



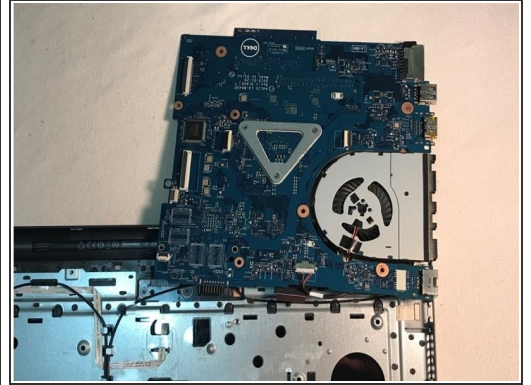
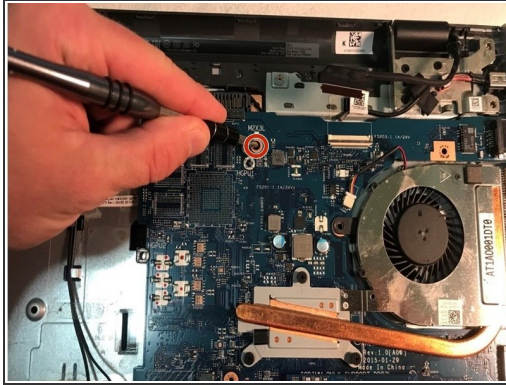
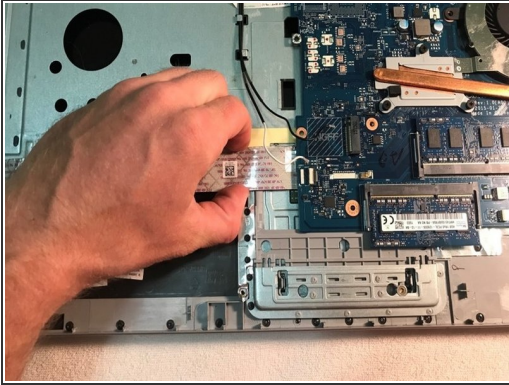
## Step 16



- Remove the one 5mm screw.
- Lift the circuit board & turn it over.
- Unplug the cable.
- Remove the audio/USB circuit board.

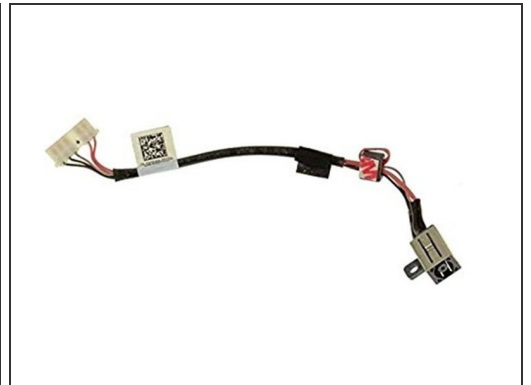
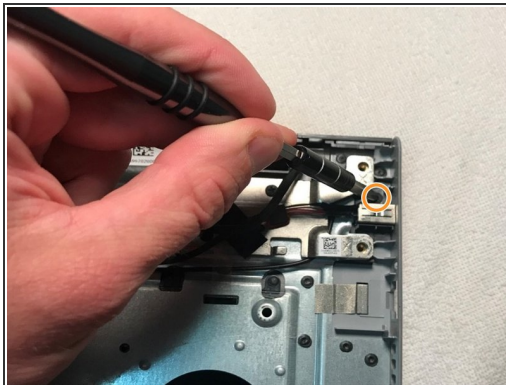


## Step 17



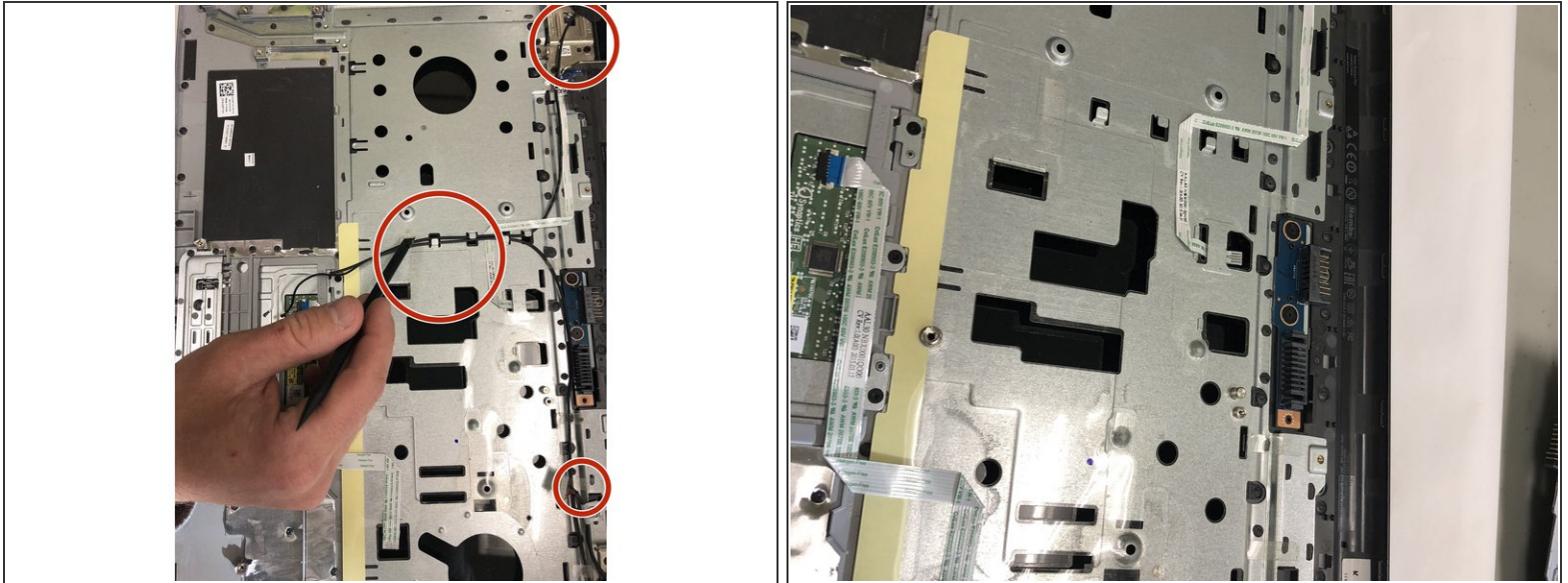
- Loosen the audio / USB cable.
- Remove the one 3mm motherboard screw.
- Lift the motherboard & carefully move it out of the way.

## Step 18



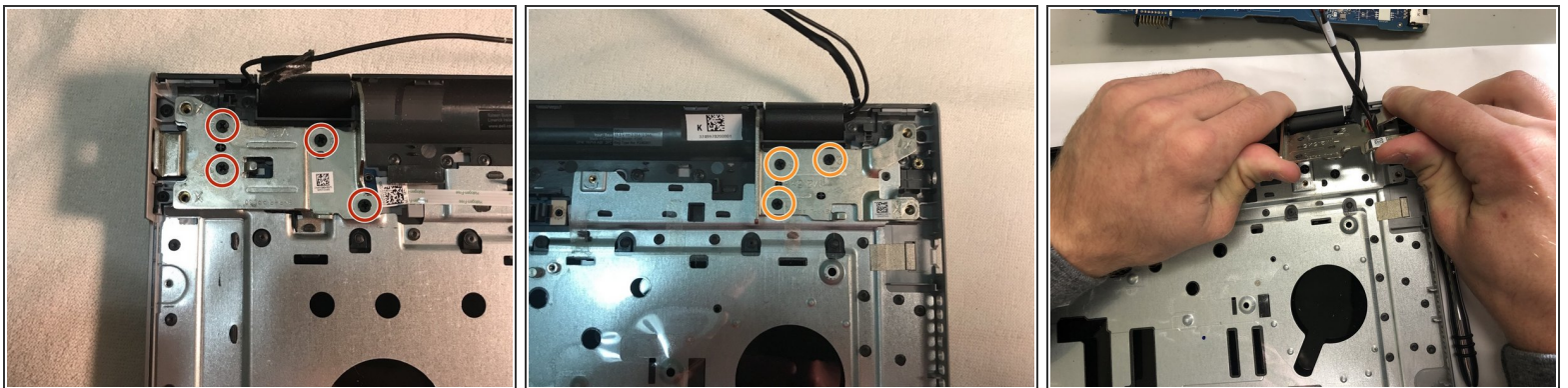
- Unplug the DC jack cable.
- Remove the one 3mm screw.
- Remove the DC Jack.

## Step 19 — Touchpad



- Release the antenna cable tape.
- Release the antenna cables.

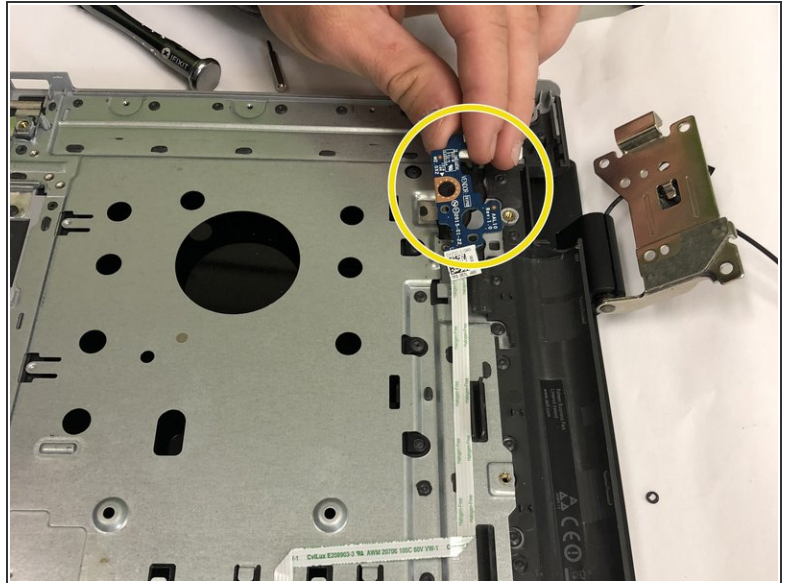
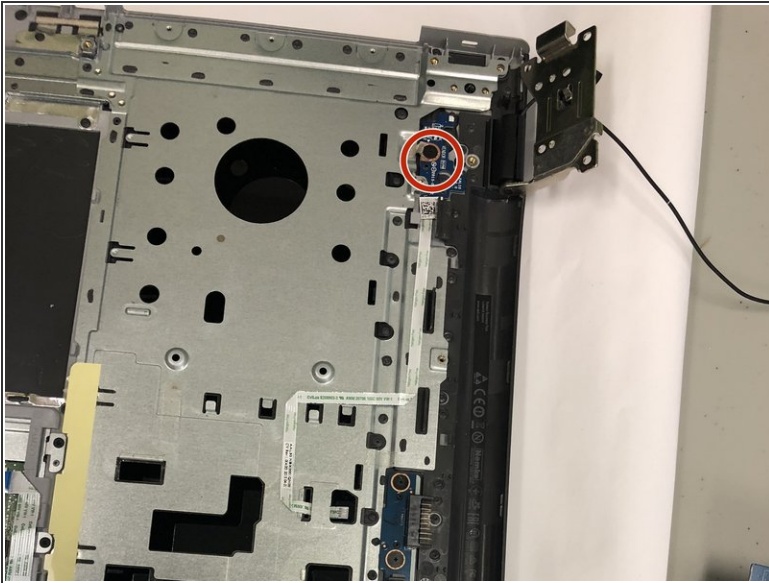
## Step 20



- Remove the four 5mm right hinge screws using the Phillips #00 screwdriver.
- Remove the three 5mm left hinge screws using Phillips #00 screwdriver.
- Open the hinges carefully and remove the LCD display assembly.



## Step 21



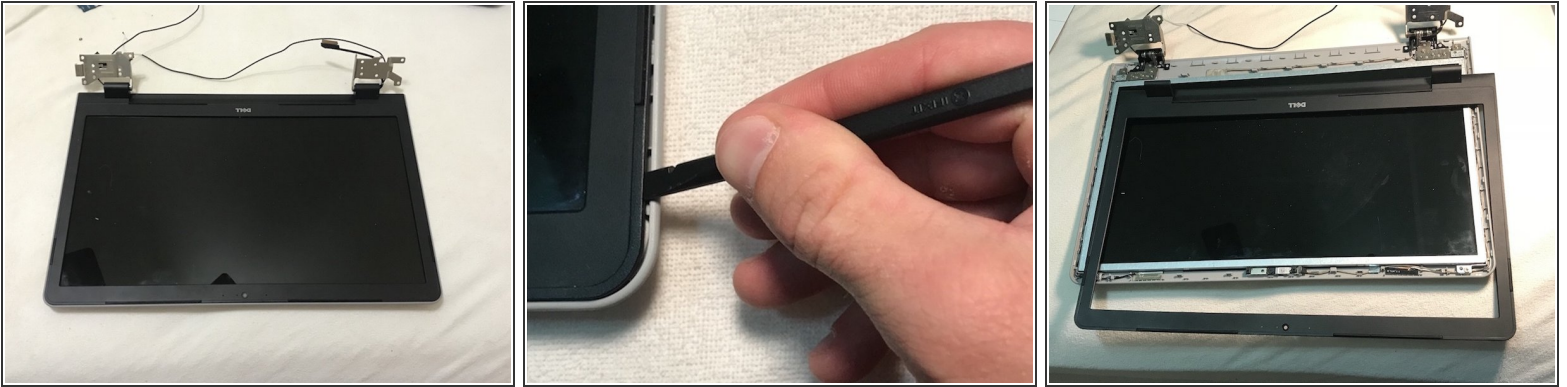
- Remove the one 2mm wafer screw using Phillips #0 screwdriver.
- Loosen the cable and remove the power button circuit board.

## Step 22



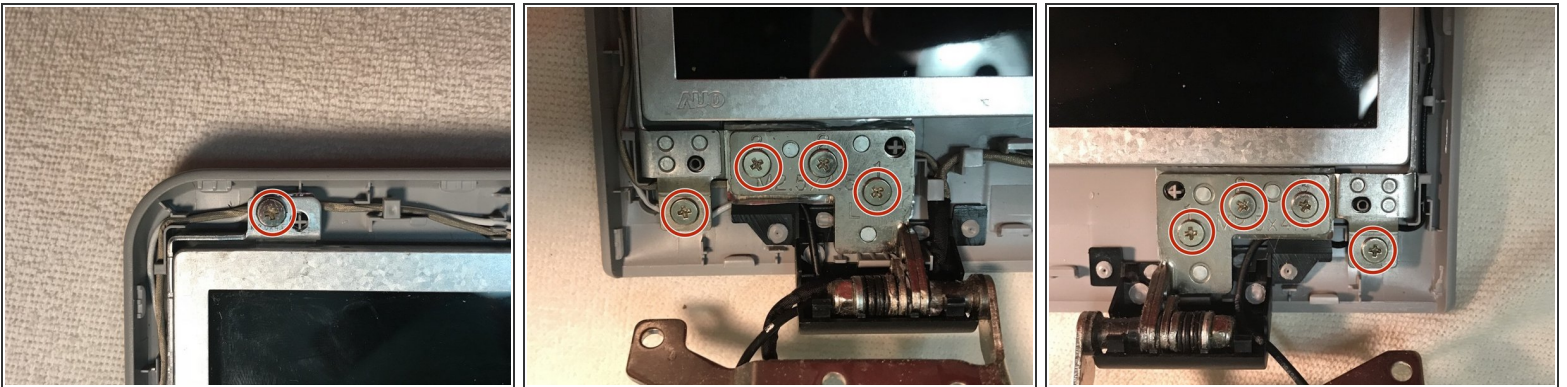
- Push up on the touchpad to release it from the housing.
- Remove the touchpad.

## Step 23 — LCD Screen



- Once you have removed the LCD display assembly from the palmrest touchpad, use a spudger to unsnap the LCD bezel via the notches on the outside edge of the bezel .
  - ❗ The bezel may require some force to unsnap.
- When you have removed the LCD bezel, place it to the side.

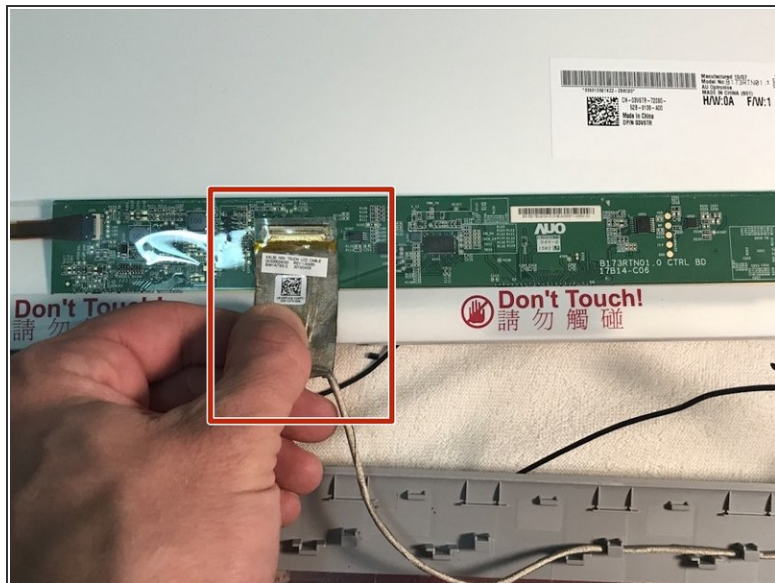
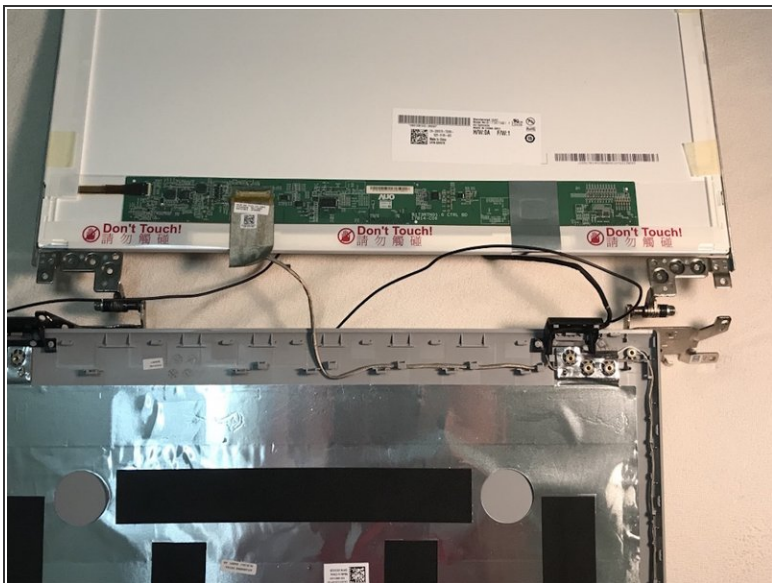
## Step 24



- Remove the ten 4.5mm screen screws.
  - ❗ There is one screw in the top left, one screw in the top right, four in the bottom left, and four in the bottom right.

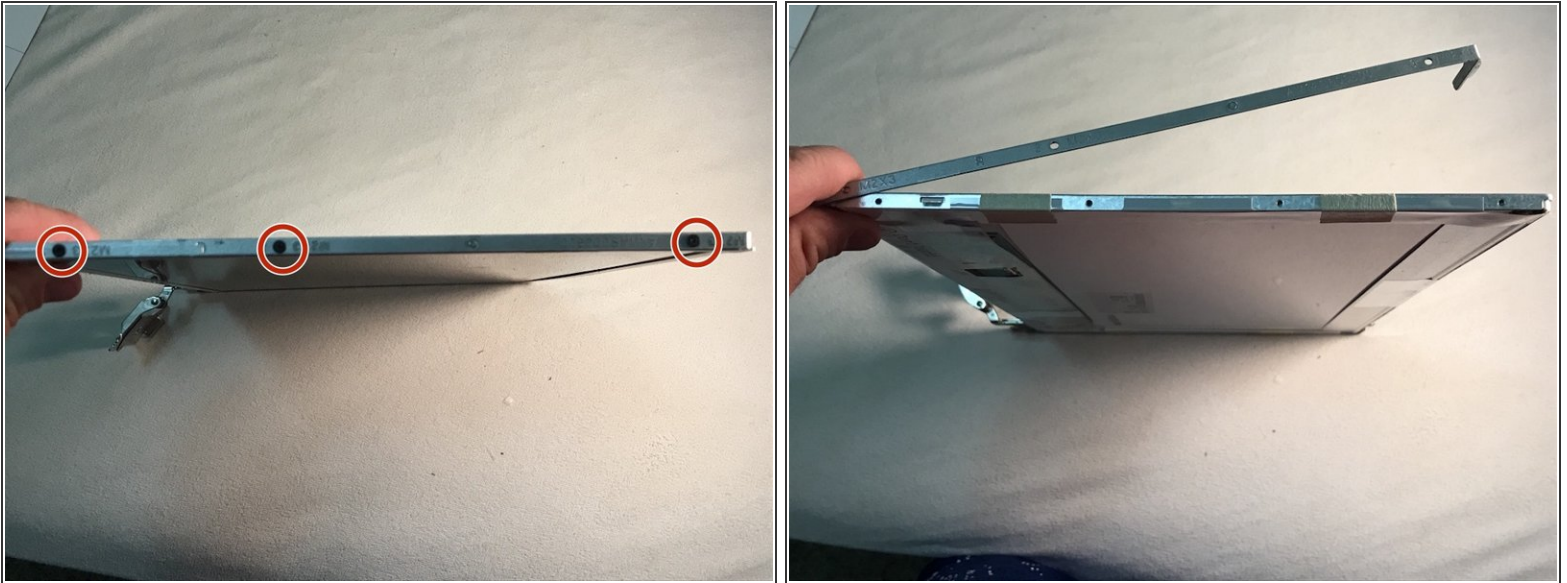


## Step 25



- Lift the LCD screen from the display assembly, flip the LCD screen over, and place the screen face down.
- Unplug the LCD cable.
- Place the display assembly to the side.

## Step 26



- Remove the three 3mm screws that connect each hinge rail to the LCD screen.
- Remove the hinge rails.
  - ⓘ There are two hinge rails, one on the left edge of the screen and one on the right edge.

To reassemble your device, follow these instructions in reverse order.