



# MSI GP60 2PE Leopard Hard Drive Replacement

A guide that will help you replace your hard drive.

Written By: Zoey Calcagno



---

## INTRODUCTION

Looking for a guide to help you replace your MSI GP60 2PE Leopard hard drive? This is the guide for you. Simply follow a few steps and your hard drive will be out in no time.

---

### TOOLS:

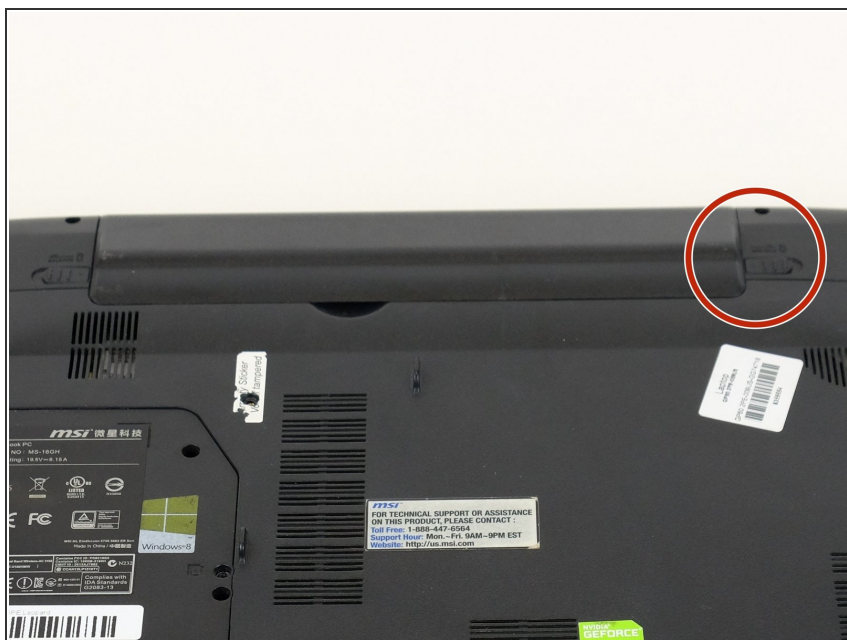
- [Phillips #00 Screwdriver](#) (1)
  - [Phillips #0 Screwdriver](#) (1)
-

## Step 1 — Battery



- Flip MSI GP60 2PE Leopard, so that the back is facing up.

## Step 2



- Find the unlock tab located on the upper right side of the device, then slide it to the right.



## Step 3



- Slide and hold the release tab on the left side of the battery, so that you can remove the battery.

## Step 4



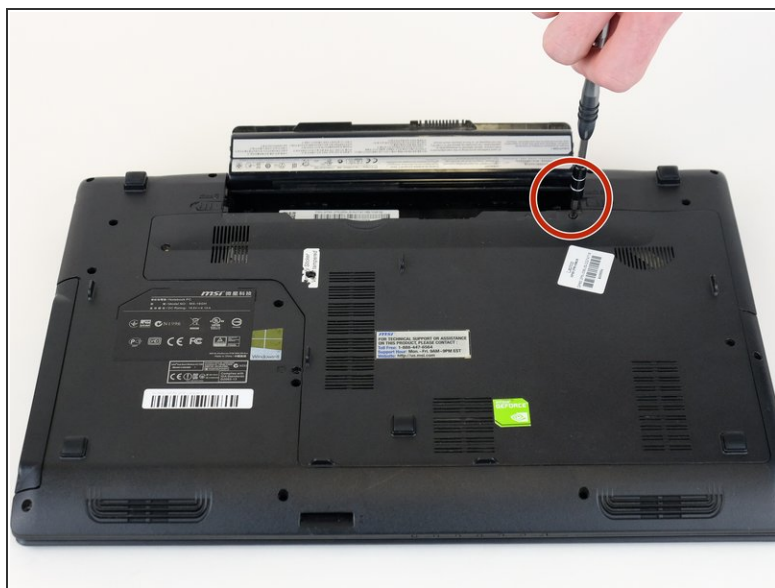
- While holding the release tab, remove the battery slowly.

## Step 5 — Back Panel



- Flip the device over so the back is facing up.

## Step 6



- Remove the four 5mm screws from the back of the device using a Phillips #00 screwdriver.
- ⓘ There is a screw located under the battery; lift the battery up to access it.

## Step 7



- Once all four screws are removed, lift the back off.

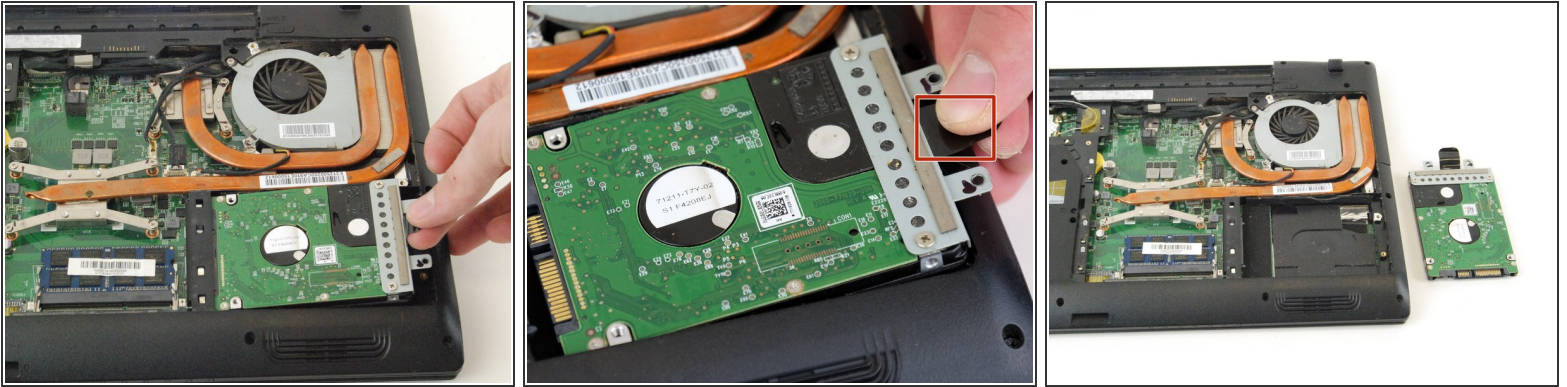
## Step 8 — Hard Drive



- Remove the two 5 mm black screws on the right hand side with a Phillips #0 screwdriver.



## Step 9



- Lift the hard drive, then remove from the device. There is a black strip of plastic attached to make the process easier.

To reassemble your device, follow these instructions in reverse order.