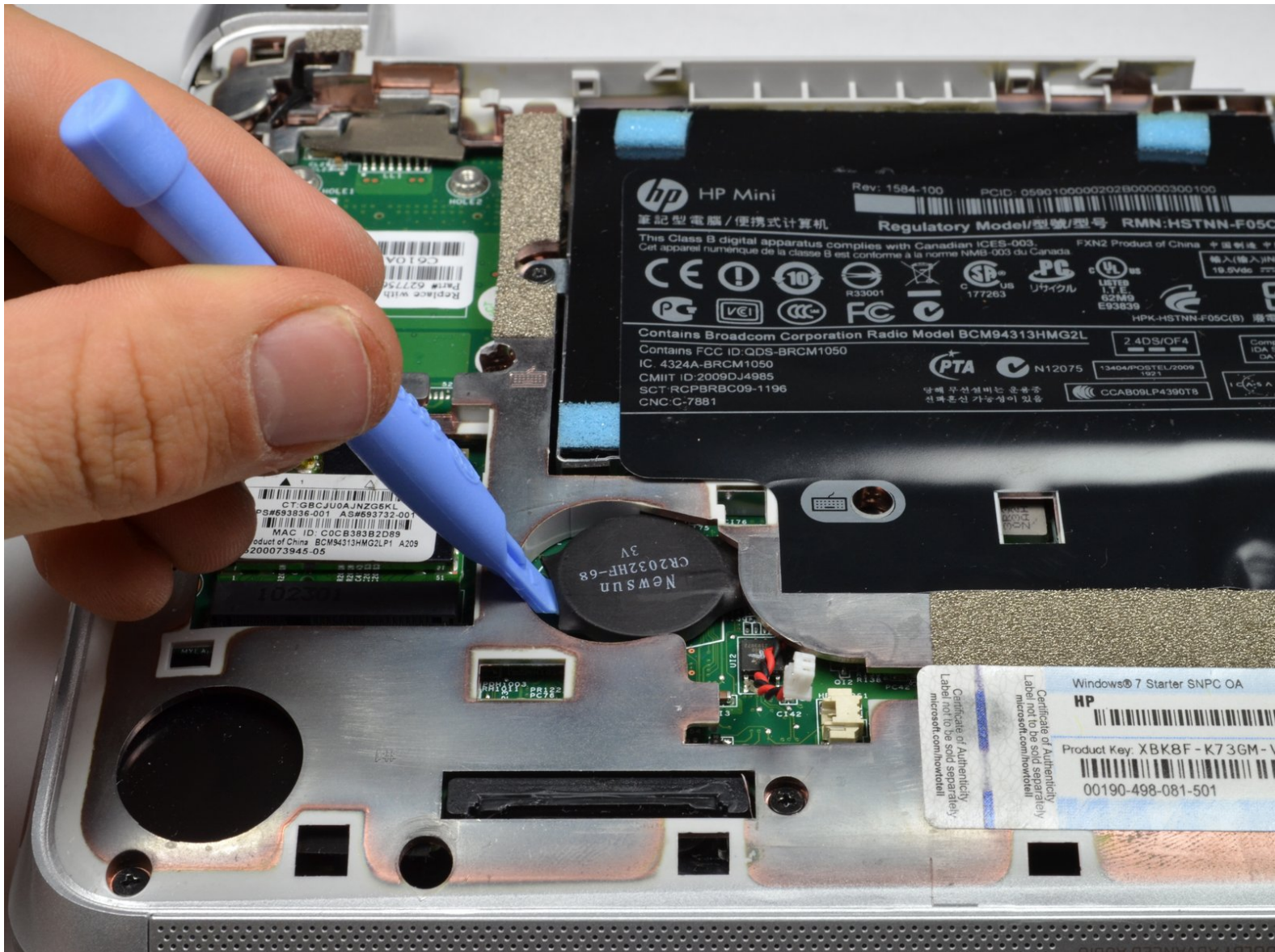




HP Mini 210-2070NR RTC Battery Replacement

This is a step by step guide showing how to replace the RTC Battery.

Written By: Alek Linquist



INTRODUCTION

The Real Time Clock (RTC) Battery helps to retain important BIOS settings such as system time, date, and BIOS configuration while the laptop is turned off or when the main battery is removed.

TOOLS:

- [iFixit Opening Tools](#) (1)
-

Step 1 — Battery and Service Access Cover



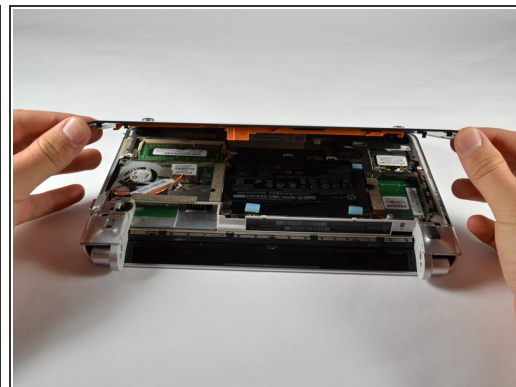
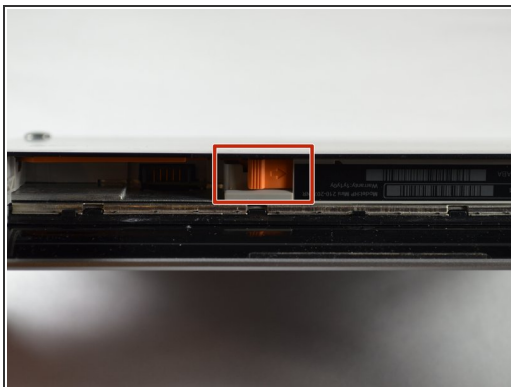
- i** Before beginning, make sure that your computer is turned off and all external power cords are disconnected.
- Close the laptop and turn it over so that the underside is up and the silver battery bay is facing towards you.

Step 2



- The battery locking latch is on the bottom right corner; slide it inward to unlock the battery.
- Slide the battery release latch inwards.
- Pull the battery towards you to remove it.

Step 3



- Slide the service access cover release lever to the right.
- While holding the lever to the right, lift up the laptop's bottom cover gently and remove the cover.

Step 4



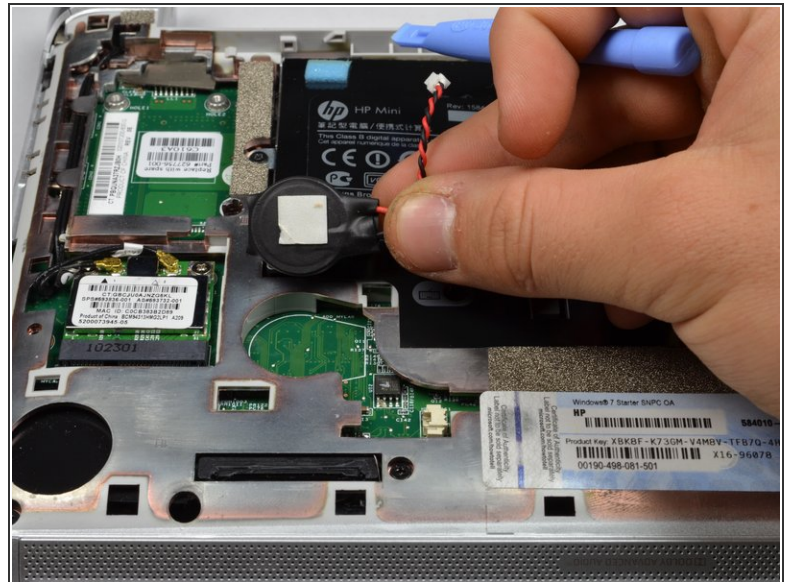
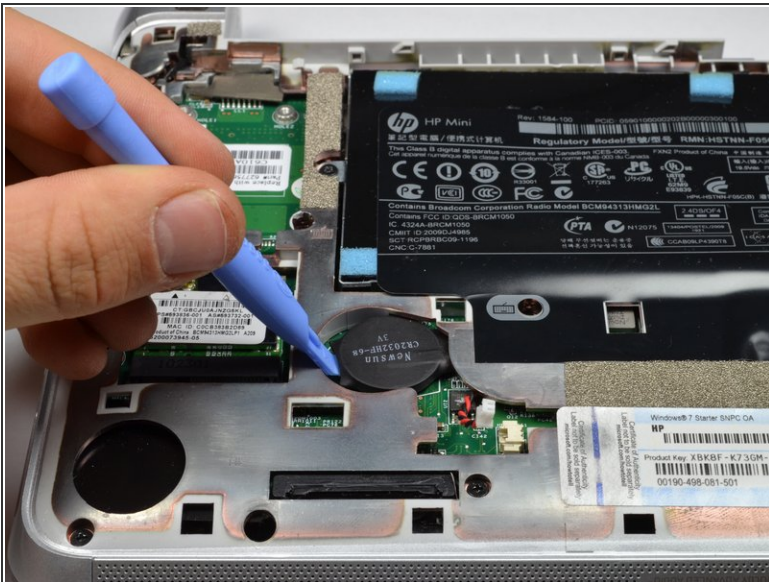
- Orient the computer as shown in the picture.

Step 5 — RTC Battery



- i** The RTC battery is a thin disk near the bottom left corner.
- i** The black and red cable is the RTC battery cable.
- Pull the RTC battery cable out of its socket.

Step 6



- Gently pry the RTC battery upward with the plastic opening tool.
- Remove RTC battery.
- i** The RTC battery is attached with double sided tape.

To reassemble your device, follow these instructions in reverse order.