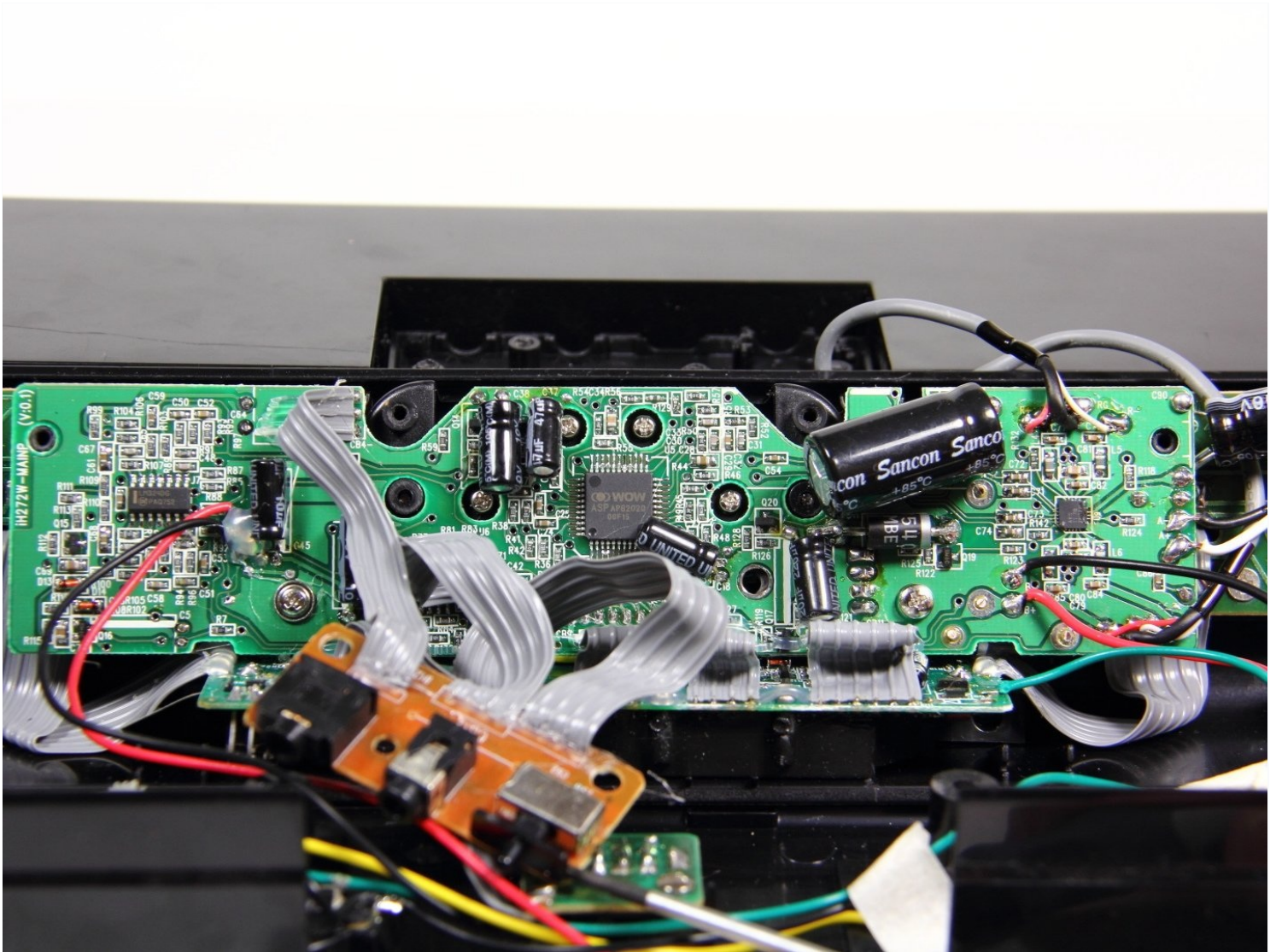




iHome iH27B Main Motherboard Replacement

Written By: John Kraemer



TOOLS:

Phillips #0 Screwdriver (1)

Step 1 — Outer Case



- Remove any iPod or apple music device connected to the iHome and unplug from any power source.
- Flip the iHome so the speakers are laying on a flat surface, and you have the concealed battery areas facing you.

Step 2



- Using your fingers, press down firmly on the plastic slide and push in the direction of the arrows shown above the word "Open" on the plastic.
- Remove the plastic slide from its location and set it aside.
- ⓘ These plastic slides are not interchangeable, so make sure each goes back to its original location in reassembly.
- Remove all 4 AA batteries by placing your fingernail at one end of the battery and applying force upwards until the battery is freed from its holder.
- Insert your fingernail or a prying tool under the notch of the plastic slide that is protecting the watch battery.
- Set the plastic covering and the watch battery aside.

Step 3



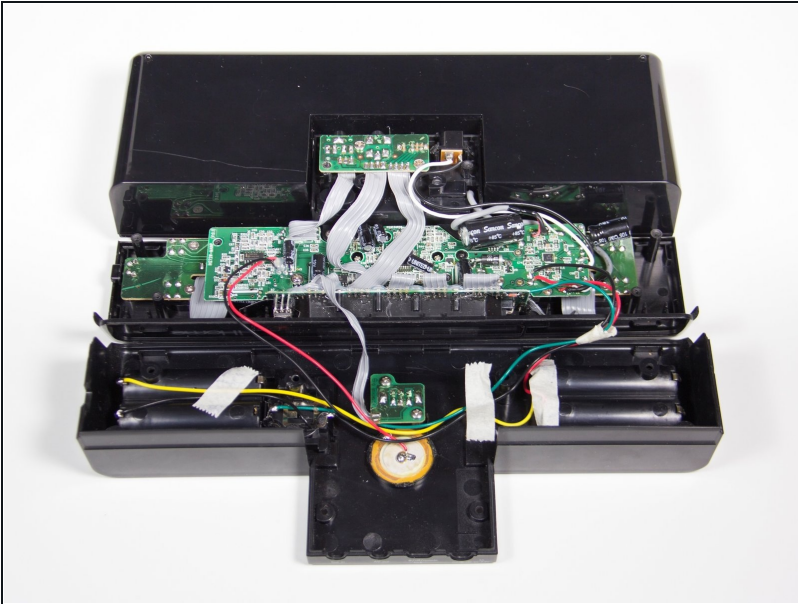
- Remove the following screws:
 - Eight 10 mm using the Phillips #0 on the bottom of your device.
- ① Cataloging each screw by size in plastic bags or separate places on a flat surface will make them easier to find when reassembling.

Step 4



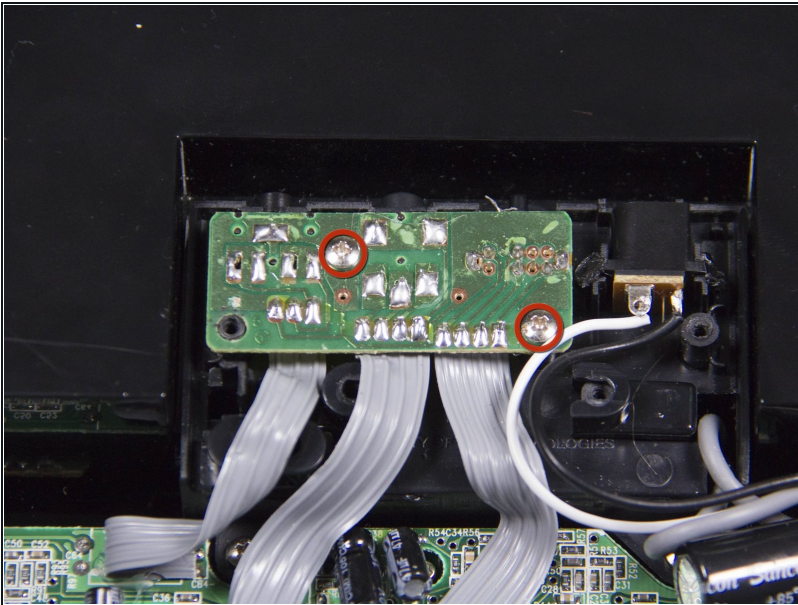
- Use your fingers or a plastic opening tool to carefully pry apart the plastic connections still connecting the base to the top.
- ⚠ Be careful not to pry too hard. Cracking the plastic connections could make reassembly harder.

Step 5



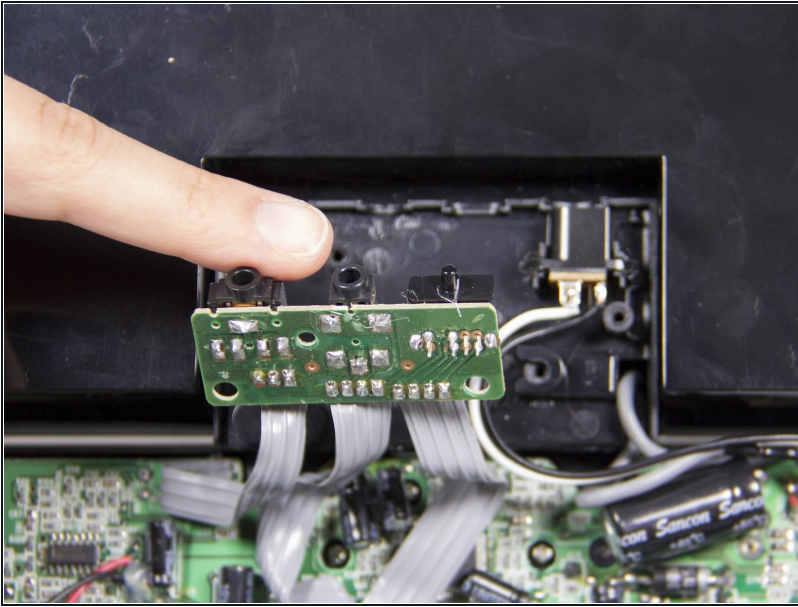
- Slowly lift the plastic base towards you and lay it on the flat surface. The base should still be connected to the rest of the iHome by a few wires.
- You should have visible access to most of the components inside the iHome now.

Step 6 — AV circuit board



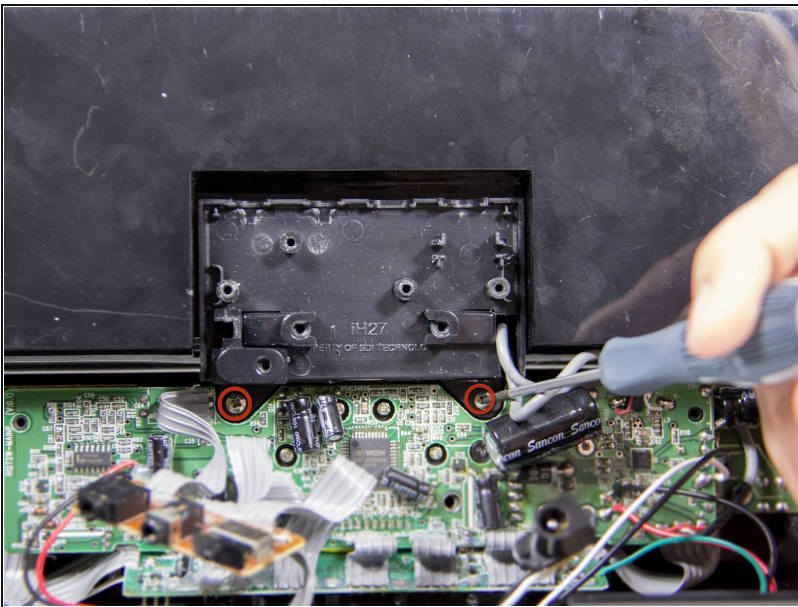
- Remove the following screws:
 - Two 10 mm Phillips #0

Step 7



- Pull out the AV circuit board and lift it up and out of the way to allow access to other components.

Step 8 — Main Motherboard



- Remove the following screws:
 - Two 10 mm Phillips #0
- Pull the speakers away and set them aside for now. They should still be connected to the rest of the iHome by two wires.

Step 9



- Remove the following 6 screws:
 - Two 7 mm Phillips #0
 - Three 10 mm Phillips #2
 - One 9 mm Phillips #2
- ⓘ Set the screws aside, careful to not mix them up with your other screws.

To reassemble your device, follow these instructions in reverse order.