



Samsung Galaxy Core Prime Back Camera Replacement

A problem you may find with your Samsung Galaxy...

Written By: Adrian Sanchez



INTRODUCTION

A problem you may find with your Samsung Galaxy Core Prime is a scratched camera lens. Instead of buying an entirely new phone you can instead replace the camera. For this guide you will need an iOpening tool, a metal spudger, a Phillips #00 screwdriver, or similarly shaped tools.

TOOLS:

[Metal Spudger](#) (1)

[iFixit Opening Tool](#) (1)

[Phillips #00 Screwdriver](#) (1)

[Heat Gun](#) (1)

Step 1 — Battery



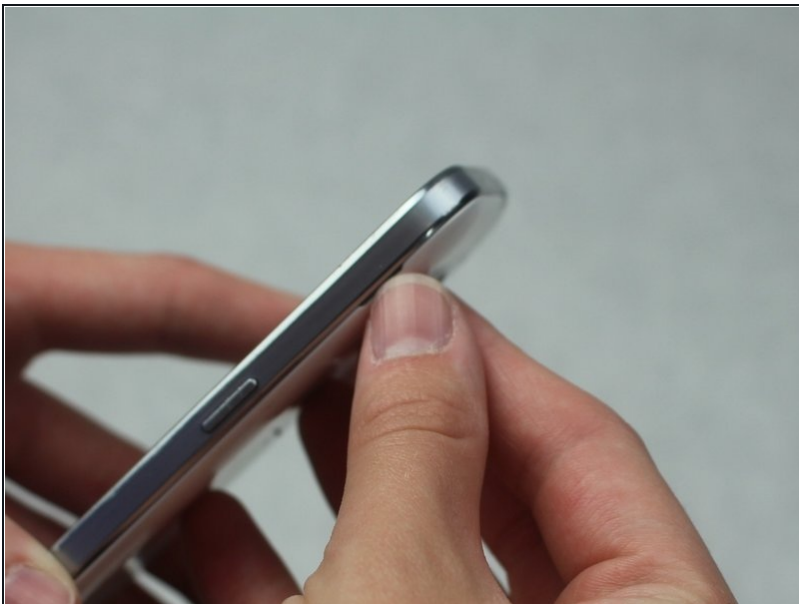
- Turn the smartphone off by using the power button on the right-hand side.

Step 2



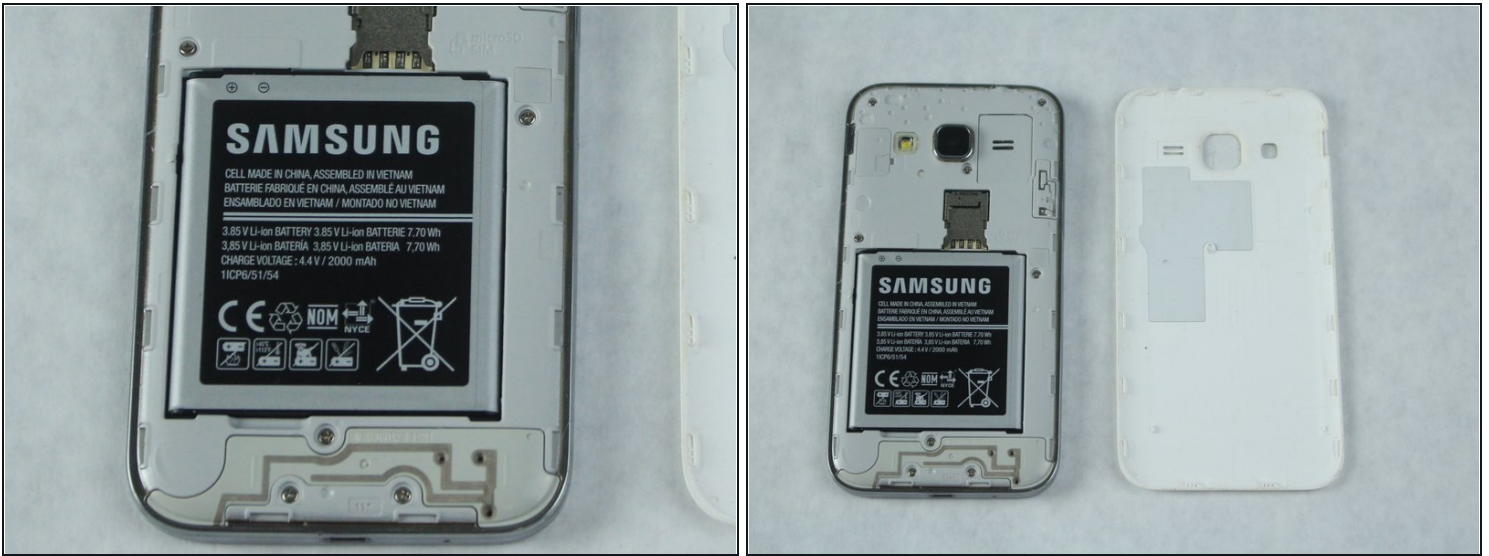
- Turn the smartphone over so that the rear camera is face up.

Step 3



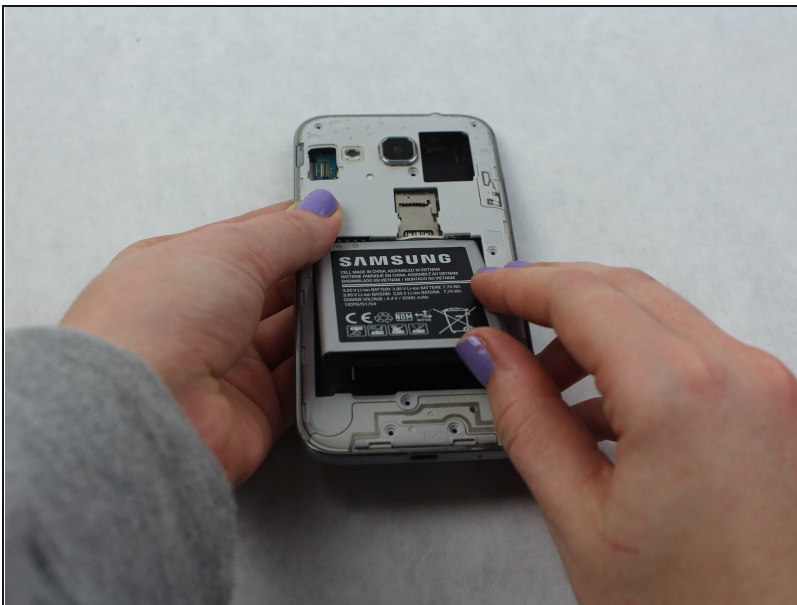
- Use your fingernail or a flat tool to lift the back cover.

Step 4



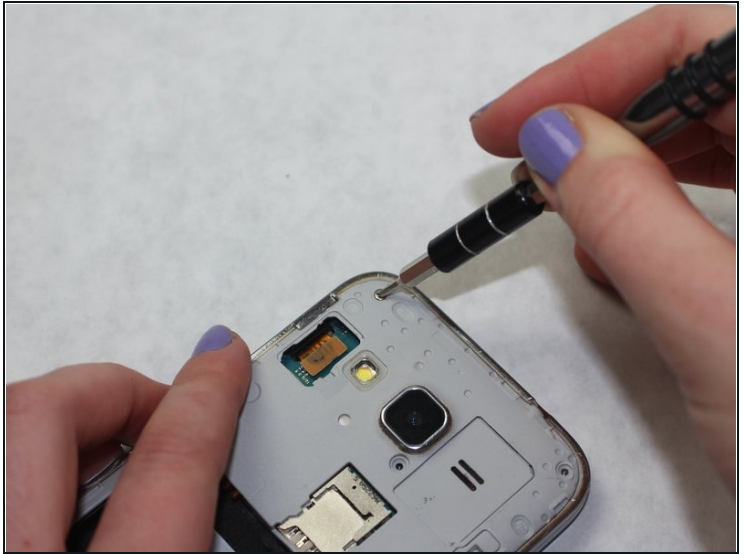
- Locate the battery near the bottom of the phone. The battery is square, flat, and is labeled 'SAMSUNG'.

Step 5



- Use your fingernail or a flat tool to lift the battery out.

Step 6 — Rear Camera



- Use a Phillips #00 screw driver to remove all eight 4mm screws from the midframe.

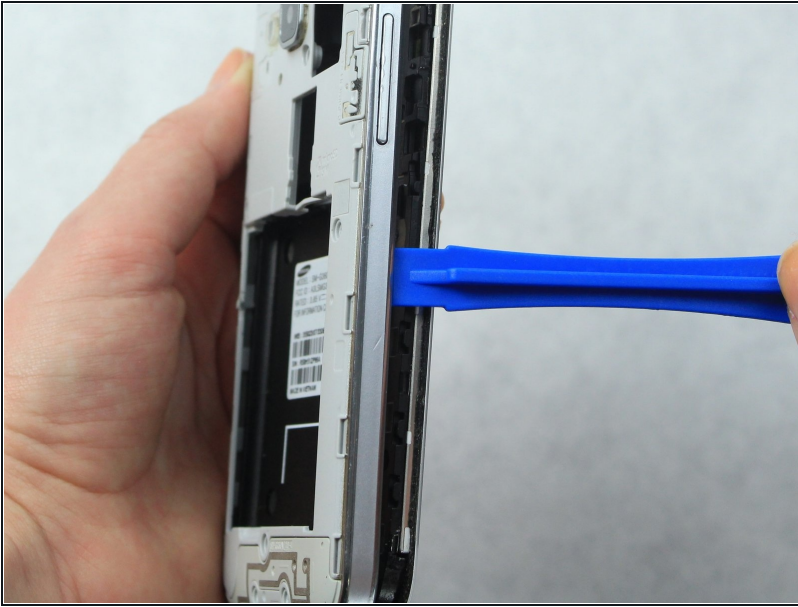
Step 7



- Heat the frame with a heat gun or hair dryer until the adhesive is loose.

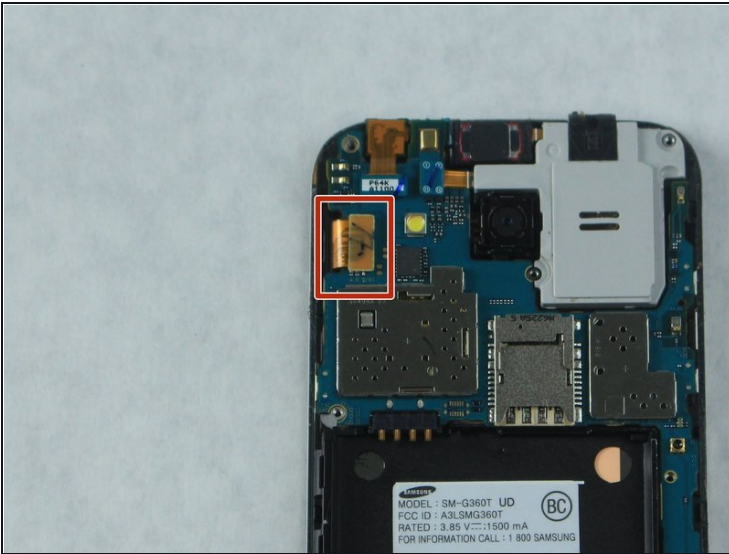
⚠ Take care when using these heat tools.

Step 8



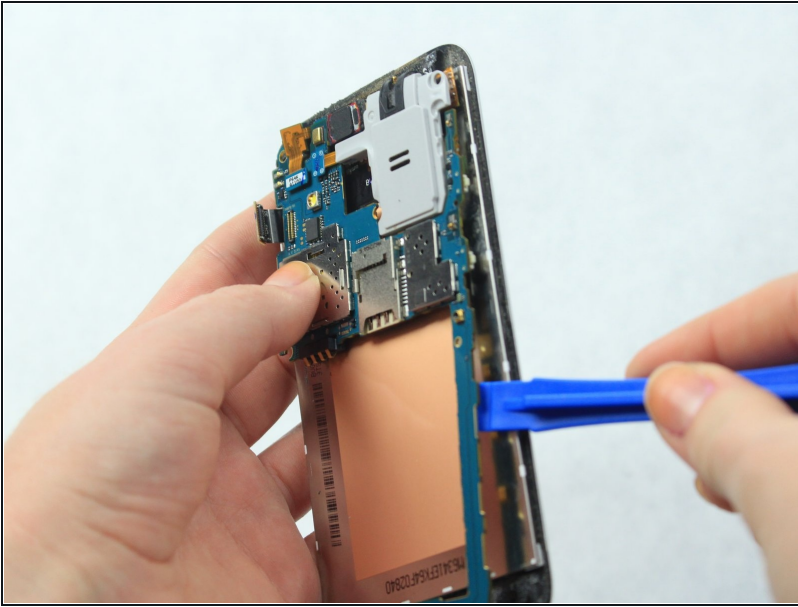
- Use the [iFixit Opening tool](#) to pry off the midframe.

Step 9



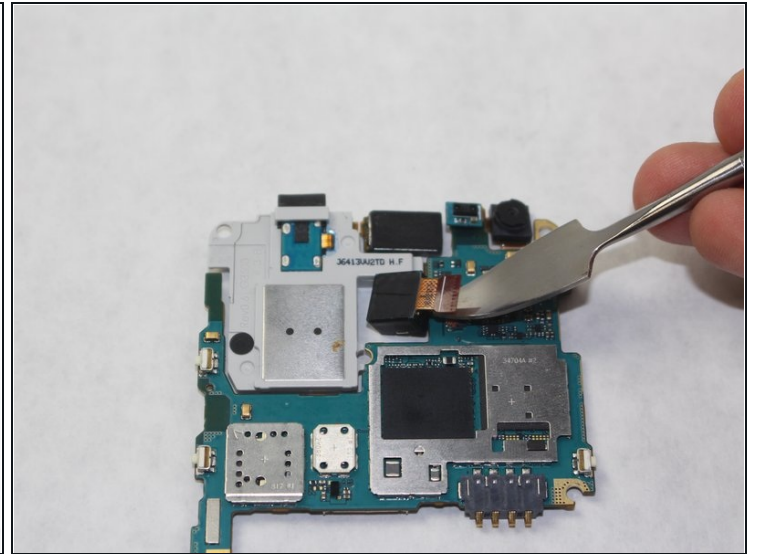
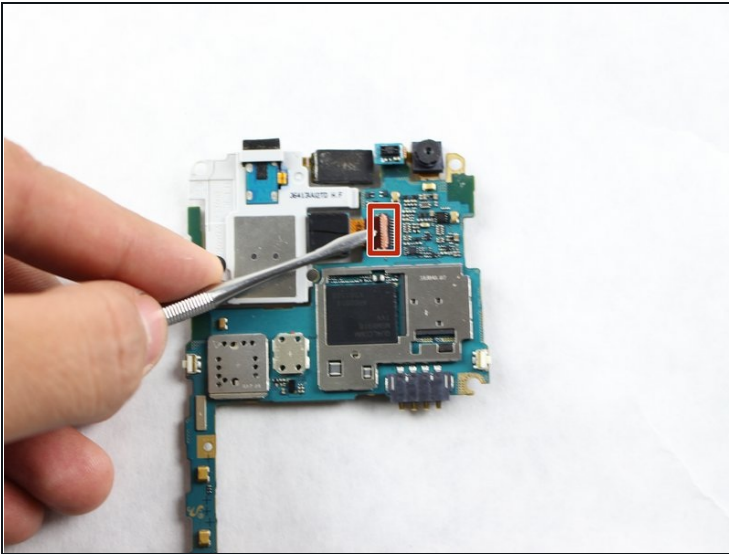
- Disconnect the power ribbon on the left side of the phone either with your fingers or [tweezers](#)

Step 10



- Lift the motherboard from the phone with an [iFixit Opening Tool](#).

Step 11



- Turn the Motherboard over and disconnect the ribbon connecting the camera to the Motherboard with an [iFixit Metal Spudger](#).

To reassemble your device, follow these instructions in reverse order.