



# Kyocera DuraForce Pro Camera Replacement

Replacing the camera of a Kyocera DuraForce Pro.

Written By: Dylan Ulbricht

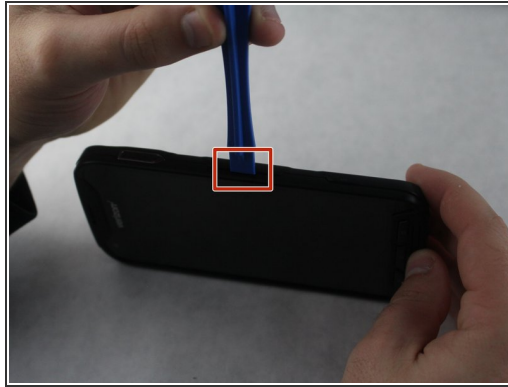
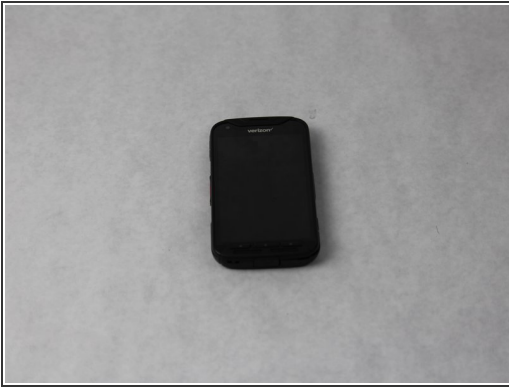




## TOOLS:

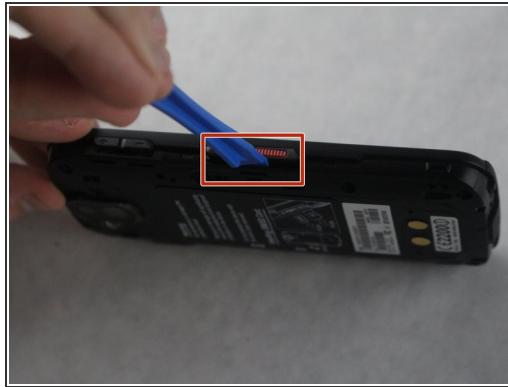
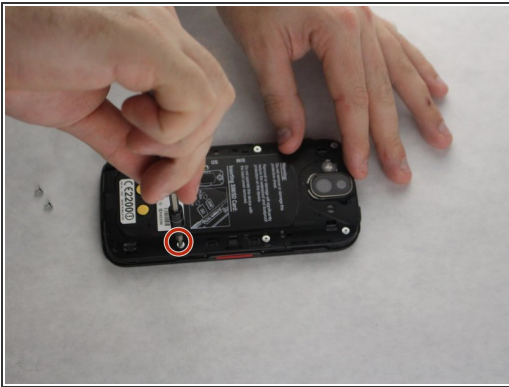
- [iFixit Opening Tools](#) (1)
- [Tweezers](#) (1)
- [JIS #0 Screwdriver](#) (1)

## Step 1 — Camera



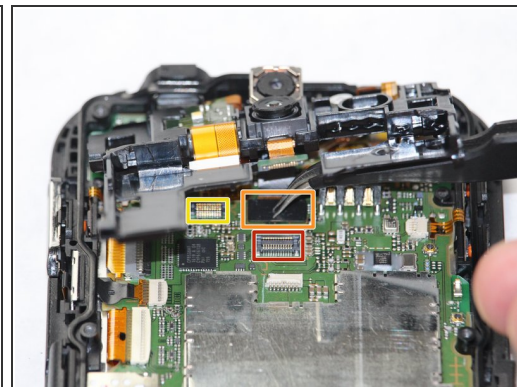
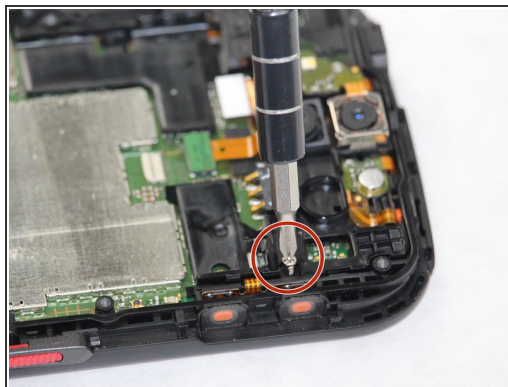
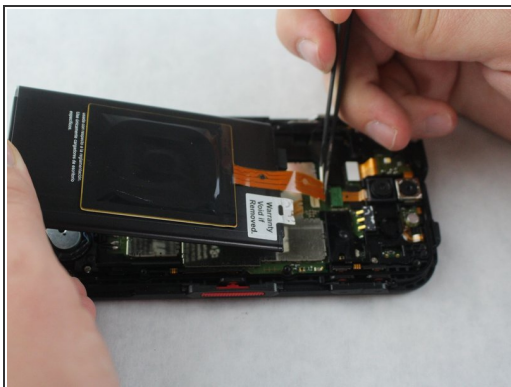
- Begin with the phone on its side.
- Use the plastic opening tool to remove the cover. It is easier to begin near the volume button. The cover should pop off on its own.

## Step 2



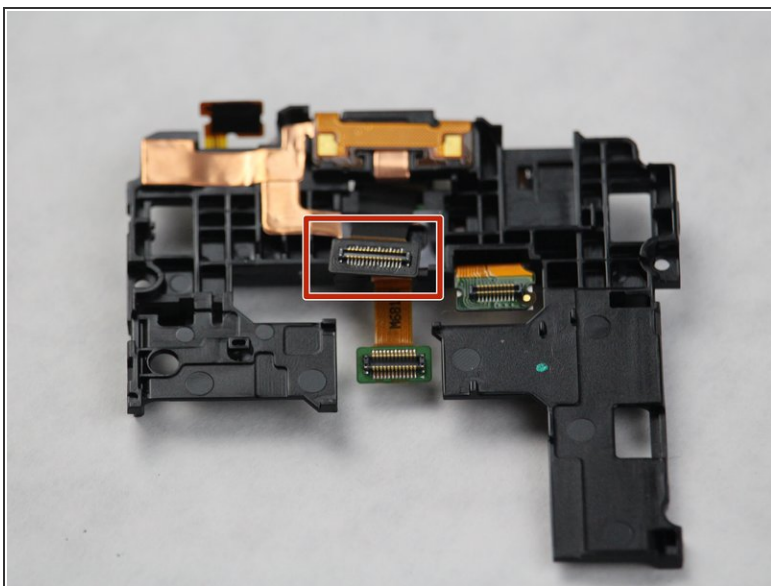
- Remove the 8 screws around the outer portion of the phone with the JIS #0 screwdriver bit.
- Use the plastic opening tool to remove the backside of the phone.
- Slide the plastic opening tool under the battery to pry it up and remove it.

## Step 3



- Once the battery pops out, remove the orange tape that connects the battery to the phone.
- Next, remove the 2 screws connecting the mounting bracket.
- Remove mounting bracket.

## Step 4



- Pull the camera housing out of the phone.

To reassemble your device, follow these instructions in reverse order.