



ZTE Quest n817 Camera Replacement

The ZTE Quest n817 Camera replacement guide provides a full walkthrough to replacing your rear-facing camera.

Written By: Eric Loureiro



INTRODUCTION

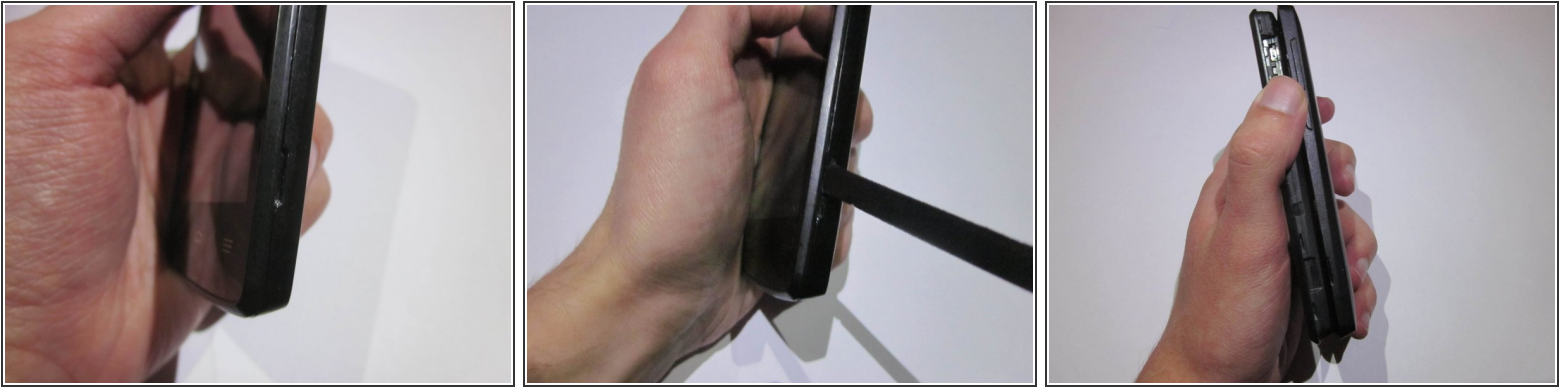
Has your ZTE Quest's rear-facing camera been badly scratched or damaged? This guide will provide instructions on how to replace your camera. All you need is a plastic opening tool, some tweezers, and a JIS #000 screwdriver.




TOOLS:

- [JIS #000 Screwdriver](#) (1)
 - [iFixit Opening Tools](#) (1)
 - [Spudger](#) (1)
 - [Tweezers](#) (1)
-

Step 1 — Battery



 Ensure that the phone is turned off before starting.

- Orient the device so that the inset on the right side of the device is facing you.
- Insert the spudger into the inset and carefully remove the back panel.

Step 2



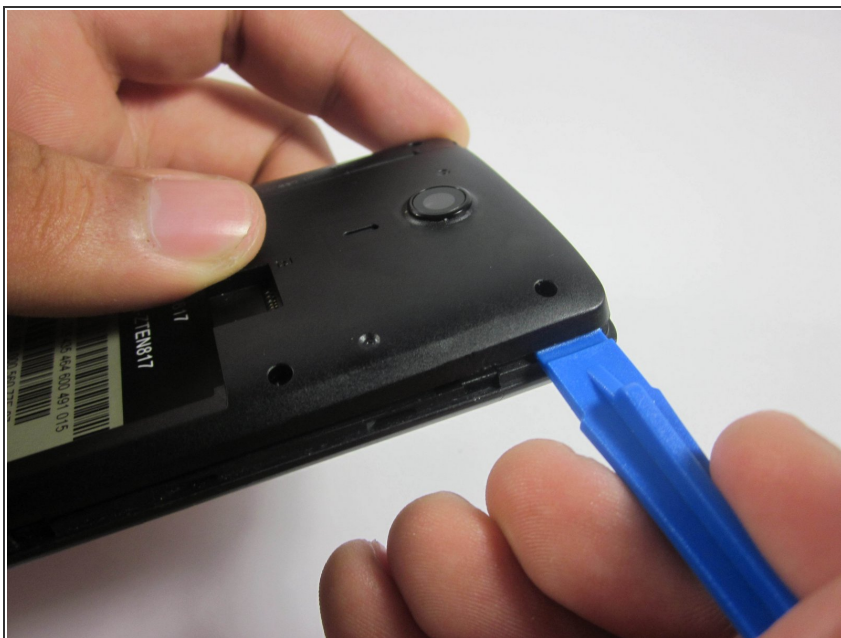
- Use the ribbon to remove the exposed battery.

Step 3 — Motherboard



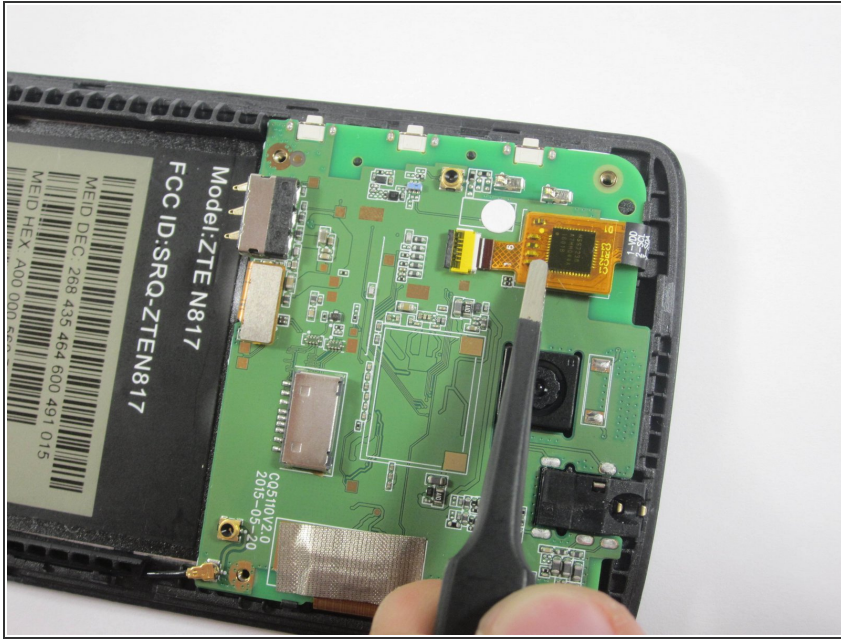
- Use the JIS #000 screwdriver to remove the six 3.0mm screws placed in the back of the ZTE Quest.

Step 4



- Carefully pry open the back panel with the plastic opening tool.

Step 5



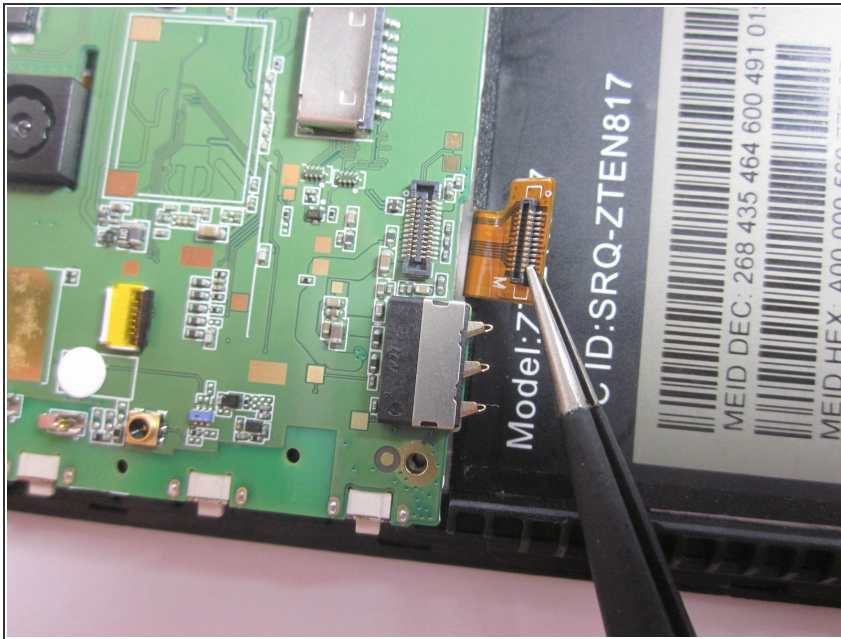
- Use a pair of tweezers to gently disconnect the ribbon cable connector from its socket.

Step 6



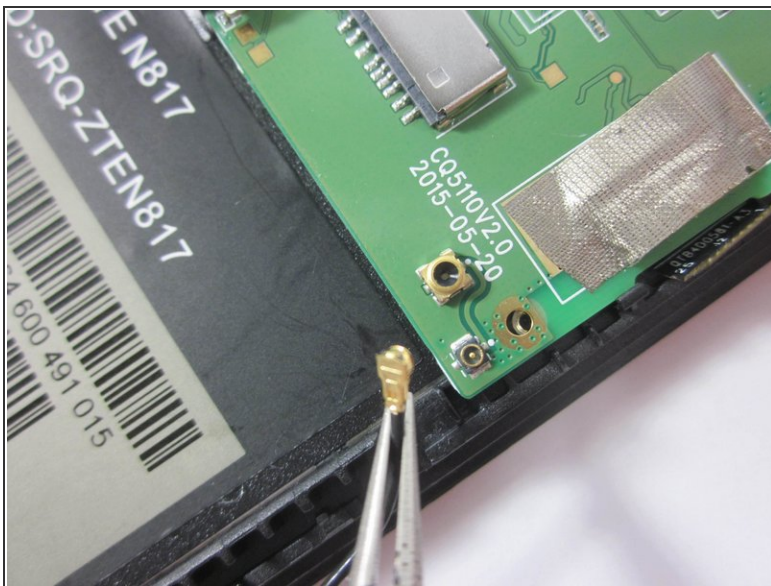
- Pull back the tape encasing the brown ribbon cable connector.
- Remove the ribbon cable from its socket.

Step 7



- Unplug the flat-top connector by using a pair of tweezers to pry up each side before removing the connector from its socket.

Step 8



- Disconnect the coaxial connector in the bottom right corner of the motherboard.

Step 9 — Camera



- Flip the motherboard over and find the camera's flat-top connector.
- Gently pry up each side of the connector with a pair of tweezers before fully removing it.

To reassemble your device, follow these instructions in reverse order.