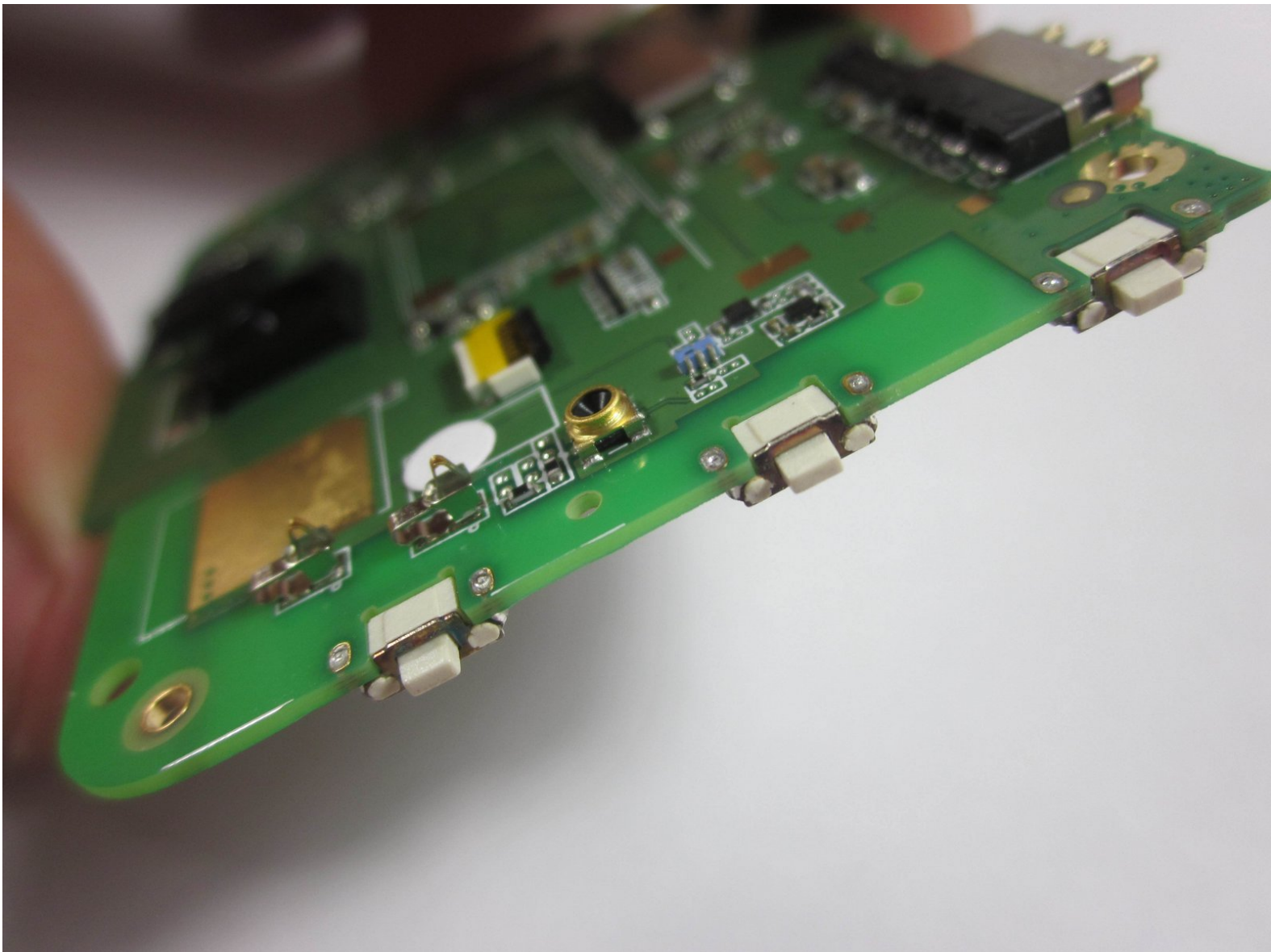




ZTE Quest n817 Power/Volume Button Replacement

The ZTE Quest n817 power and volume button replacement guide requires extensive soldering knowledge to complete.

Written By: Eric Loureiro



INTRODUCTION

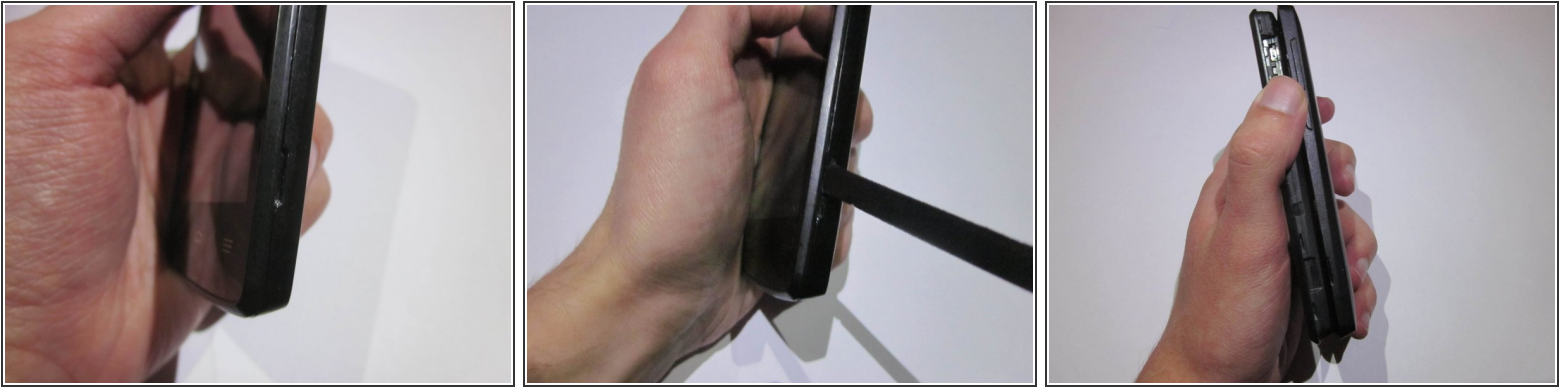
If your ZTE Quest's power and/or volume buttons aren't working properly then it may be necessary to replace them. This guide requires extensive soldering knowledge and should really only be attempted as a last resort.




TOOLS:

- [JIS #000 Screwdriver](#) (1)
 - [iFixit Opening Tools](#) (1)
 - [Spudger](#) (1)
 - [Tweezers](#) (1)
 - [Soldering Iron](#) (1)
-

Step 1 — Battery



 Ensure that the phone is turned off before starting.

- Orient the device so that the inset on the right side of the device is facing you.
- Insert the spudger into the inset and carefully remove the back panel.

Step 2



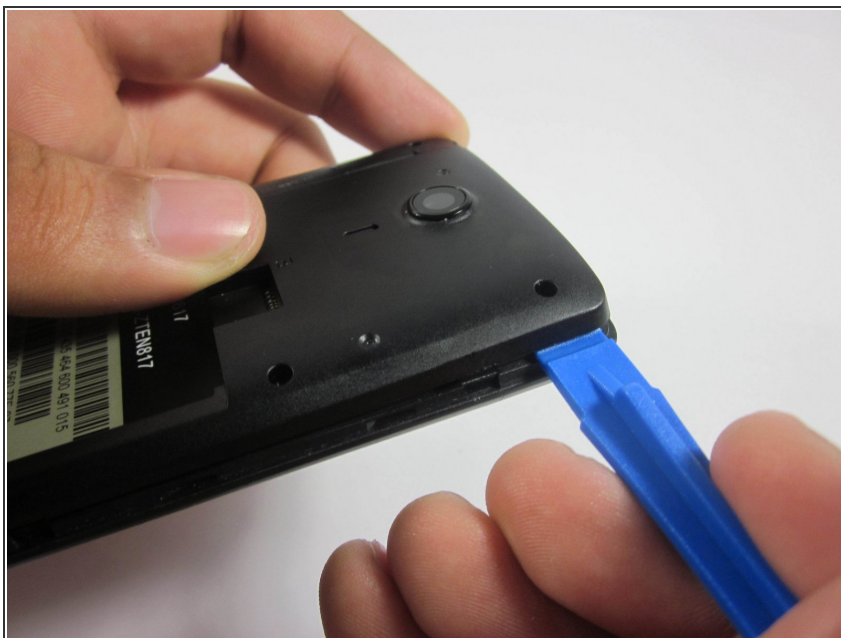
- Use the ribbon to remove the exposed battery.

Step 3 — Motherboard



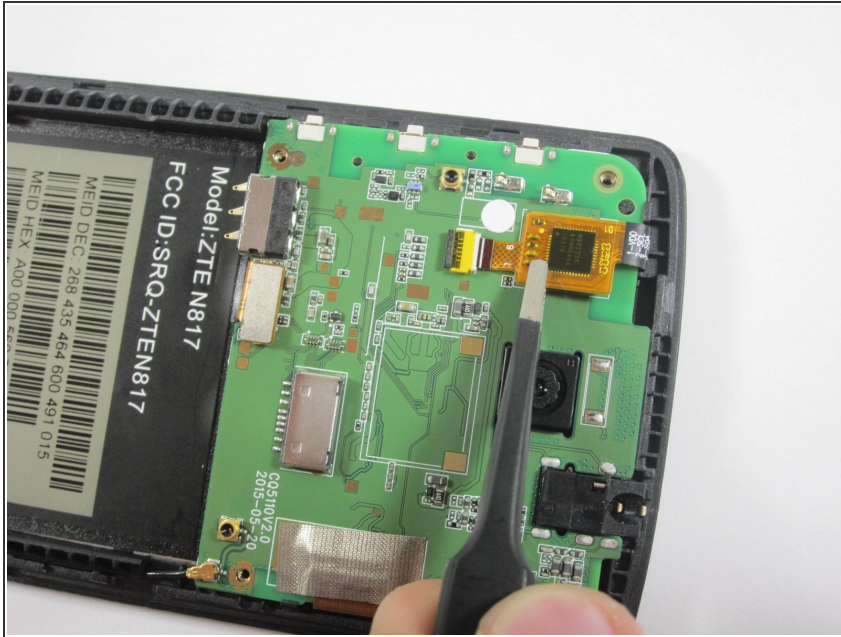
- Use the JIS #000 screwdriver to remove the six 3.0mm screws placed in the back of the ZTE Quest.

Step 4



- Carefully pry open the back panel with the plastic opening tool.

Step 5



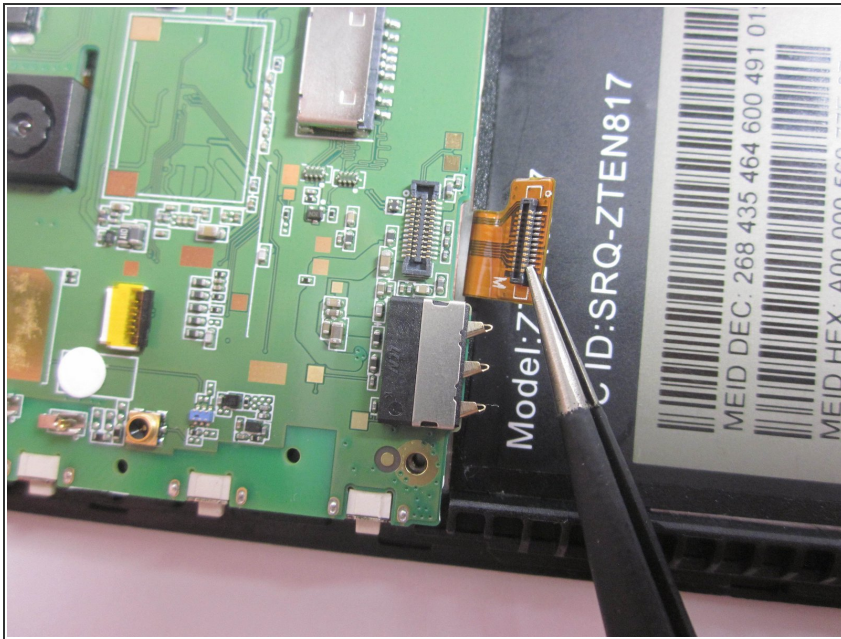
- Use a pair of tweezers to gently disconnect the ribbon cable connector from its socket.

Step 6



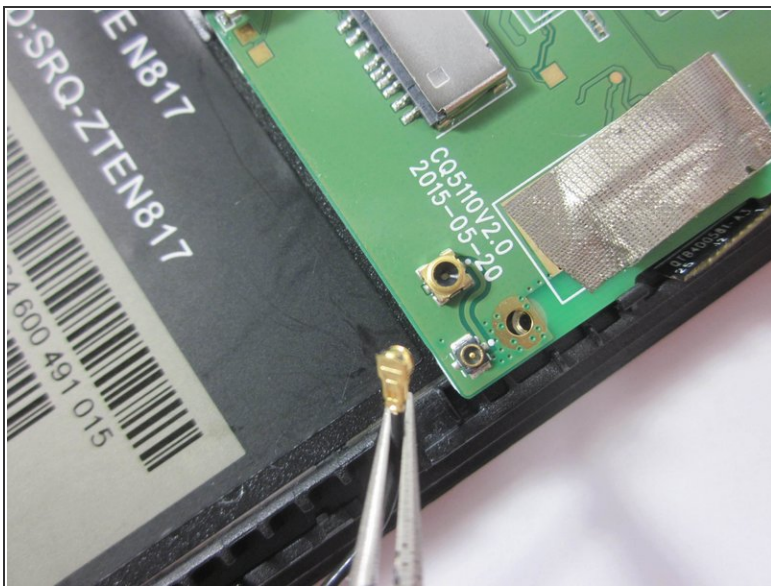
- Pull back the tape encasing the brown ribbon cable connector.
- Remove the ribbon cable from its socket.

Step 7



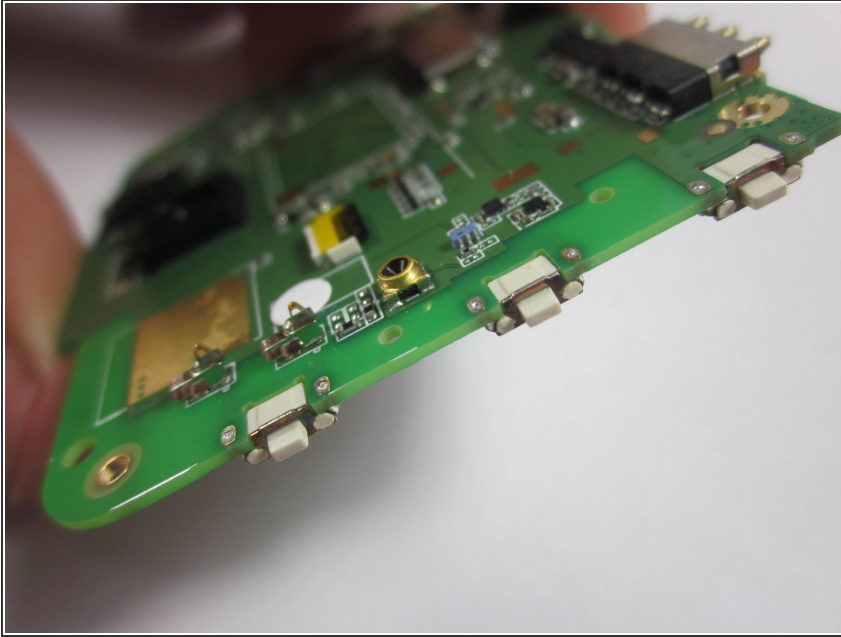
- Unplug the flat-top connector by using a pair of tweezers to pry up each side before removing the connector from its socket.

Step 8



- Disconnect the coaxial connector in the bottom right corner of the motherboard.

Step 9 — Power/Volume Button



- Each of these buttons can be removed using micro-soldering techniques around either side of the button.
- Instructions for how to do so can be found at iFixit's [How to Solder and Desolder Connections](#) guide.

To reassemble your device, follow these instructions in reverse order.