



Philips Wake-Up HF3531/01 Disassembly

This bed side light is a bit tricky to open....

Written By: Max



INTRODUCTION

This bed side light is a bit tricky to open.

Purpose of this was to install an antenna jack (BNC) to attach a telescopic antenna or roof aerial.



TOOLS:

- [Spudger](#) (1)
 - [Phillips #00 Screwdriver](#) (1)
-

Step 1 — Start



- There is a screw under the shiny UL sticker. Remove the sticker and screw to remove this bottom panel.
- ⓘ There are two tabs holding the panel into the clock/light, so you might have to wiggle the panel forward and out to remove it.

Step 2 — Prying open



- Flipping the light upside down will present a small section of the bezel that can be pried upward. It is a small plastic strip with hooks that have to be disengaged to be removed.

Step 3 — Remove the button ring



- We can finally unscrew two more Philips head screws to remove the button ring.

Step 4 — Front screen shield



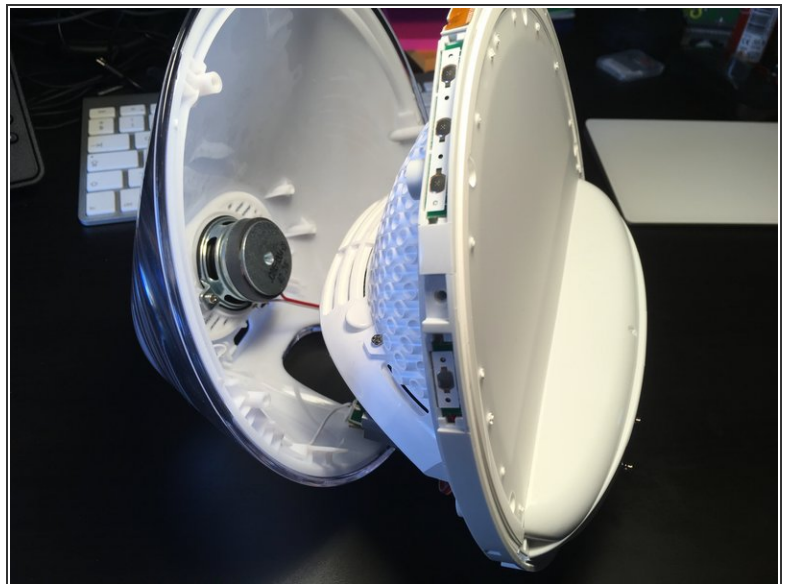
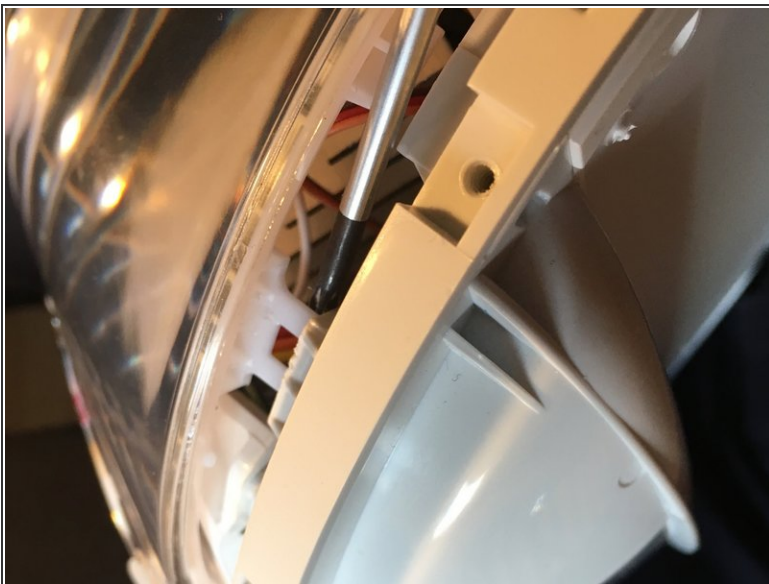
- Now the screws holding the front screen shield need to be removed and the shield can be pulled away to the front.

✦ Screw organization note for later: these screws have pointed ends

⚠ Take care not to damage the internal screen.

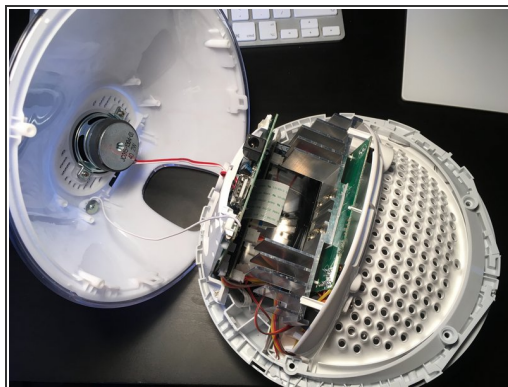
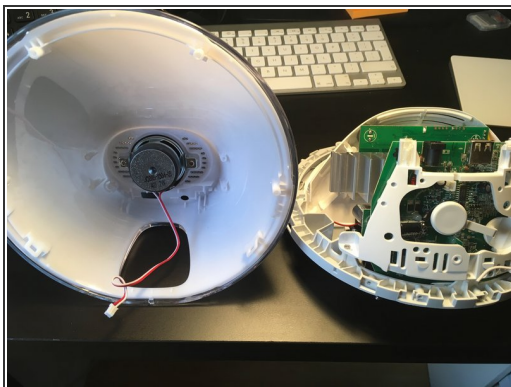
- Unscrew the four screws holding the inner screen assembly in place.

Step 5 — Inner screen assembly





- The inner screen assembly can be pulled out slightly to reveal tabs on each side that hold the assembly in.
- Pry the back tabs inwards to release.

Step 6 — Remove the screen



- The screen is connected to the plastic domed back with holes. There are two screws at the back of the base of this domed panel. Remove screws to remove screen.

 Set screen panel aside for safe keeping.

 More to see and modify...