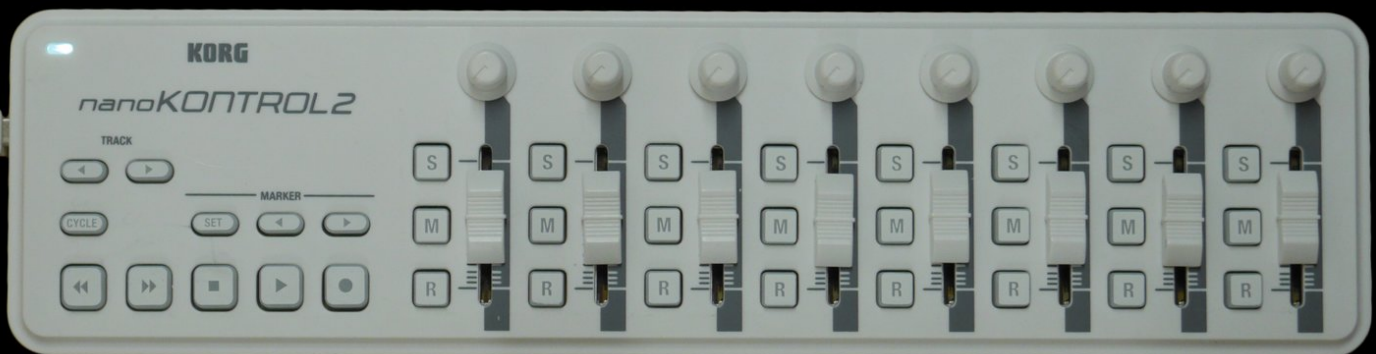




Korg nanoKONTROL2 Disassembly

Taking apart the nanoKontrol2 USB MIDI controller.

Written By: jzohsuh

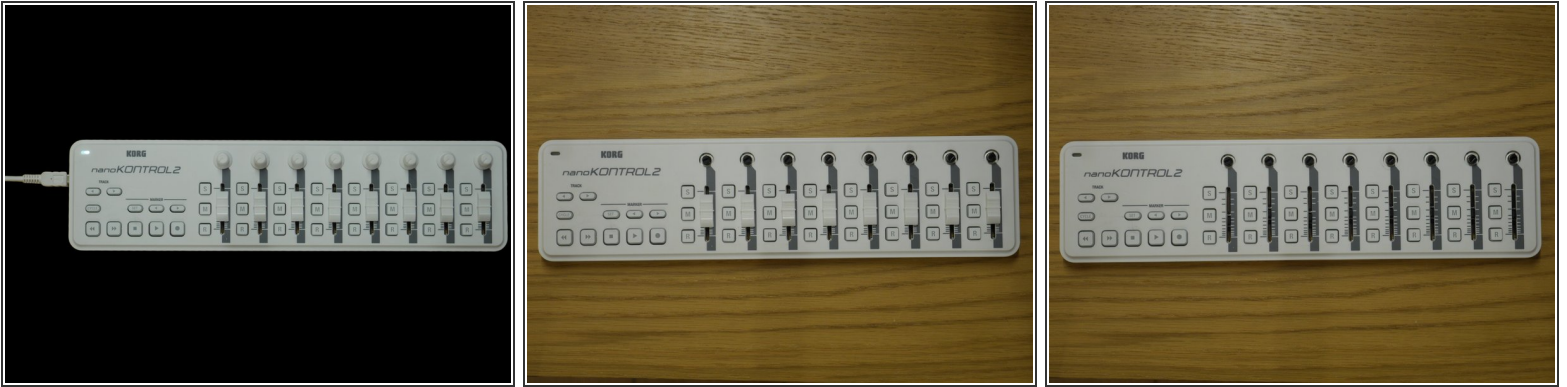




TOOLS:

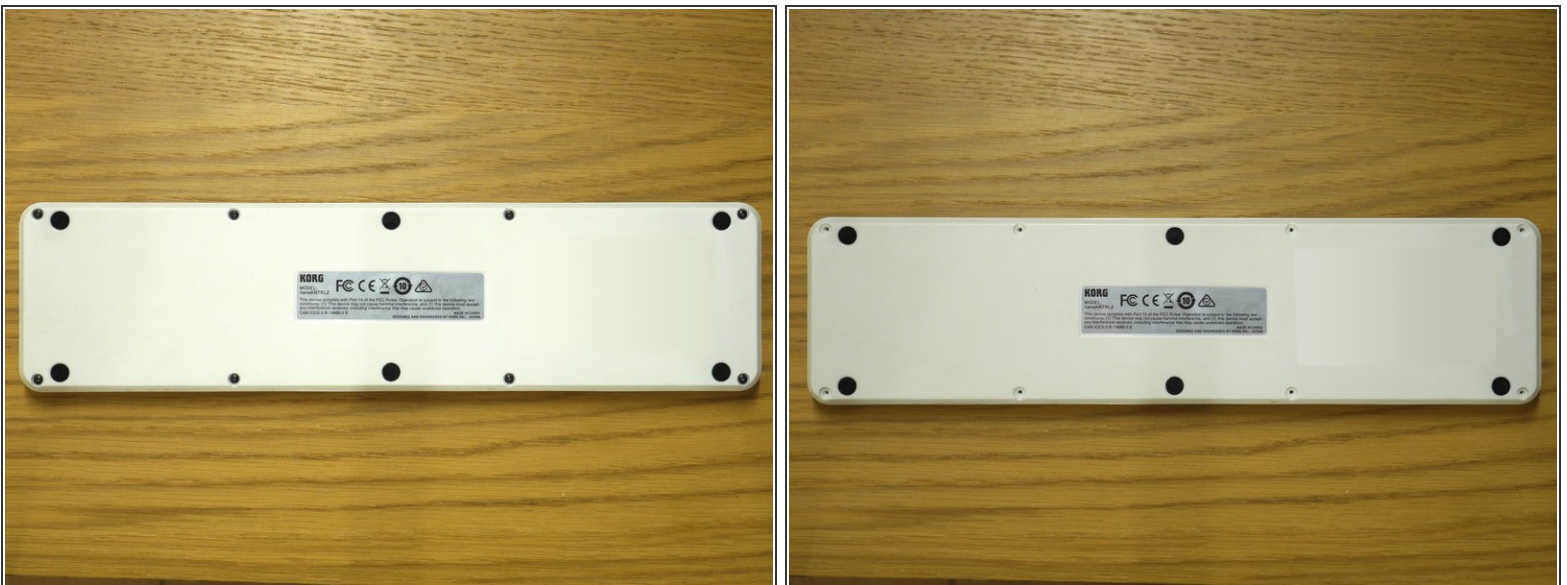
- [Essential Electronics Toolkit \(1\)](#)
-

Step 1 — Korg nanoKONTROL2 Disassembly



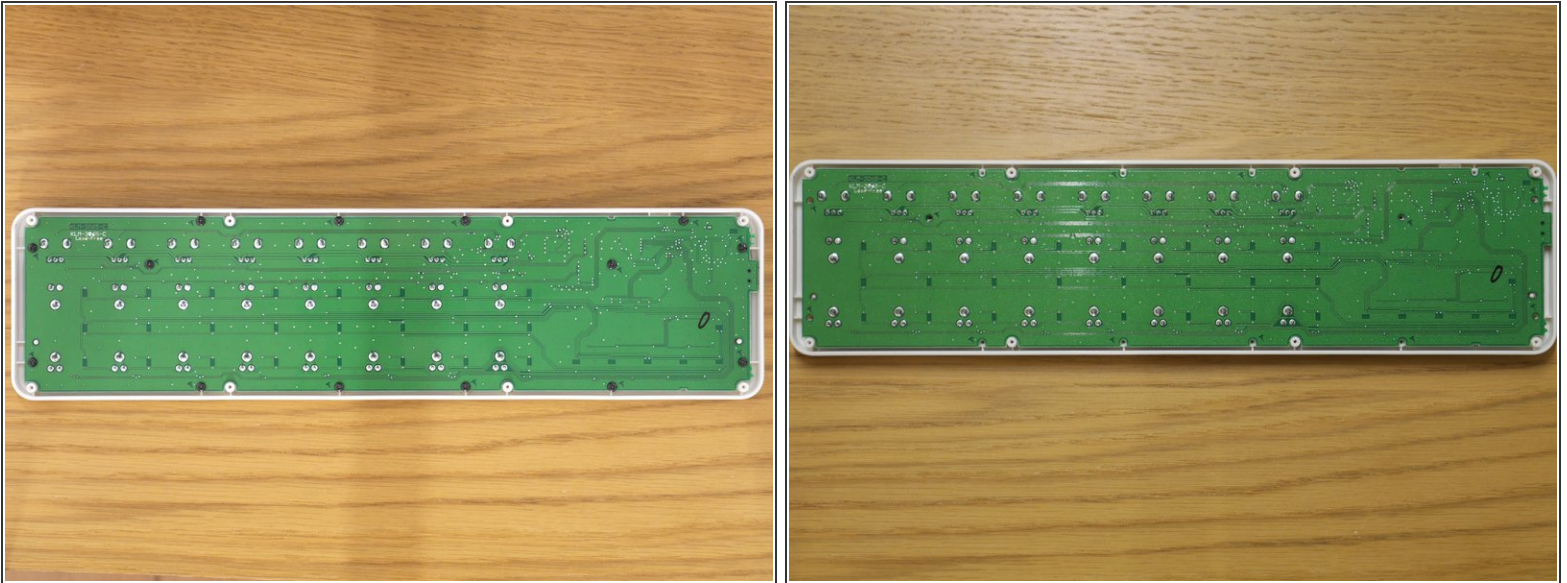
- Start by unplugging, then remove all the faders and knobs, by lifting them up gently.

Step 2



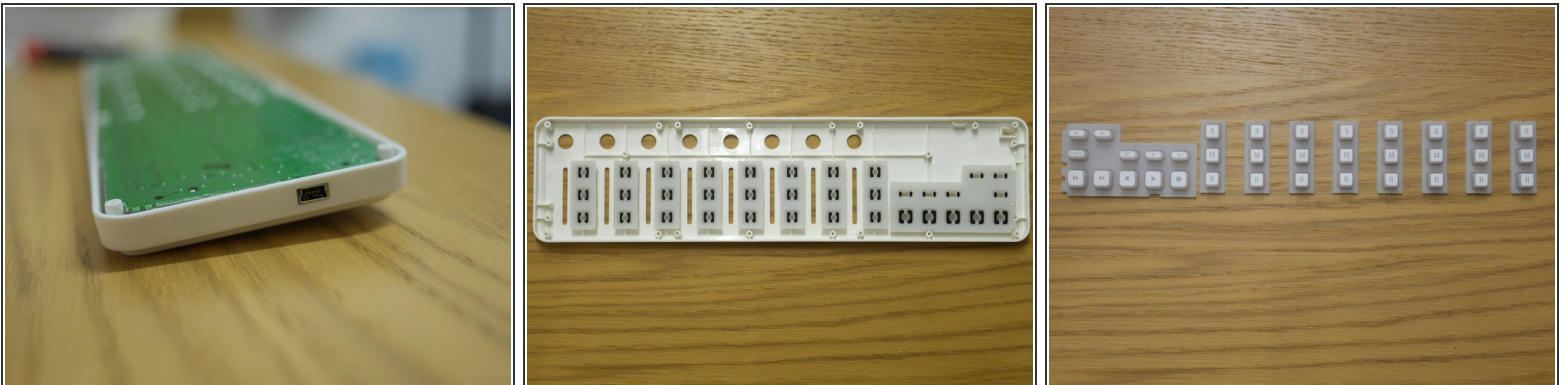
- Remove the 8 screws on the bottom. Ensure that you have the right screwdriver bit, and that you go slowly and use enough force to turn the screw without stripping it.
- *(Serial numbers and personal info removed from picture)*

Step 3



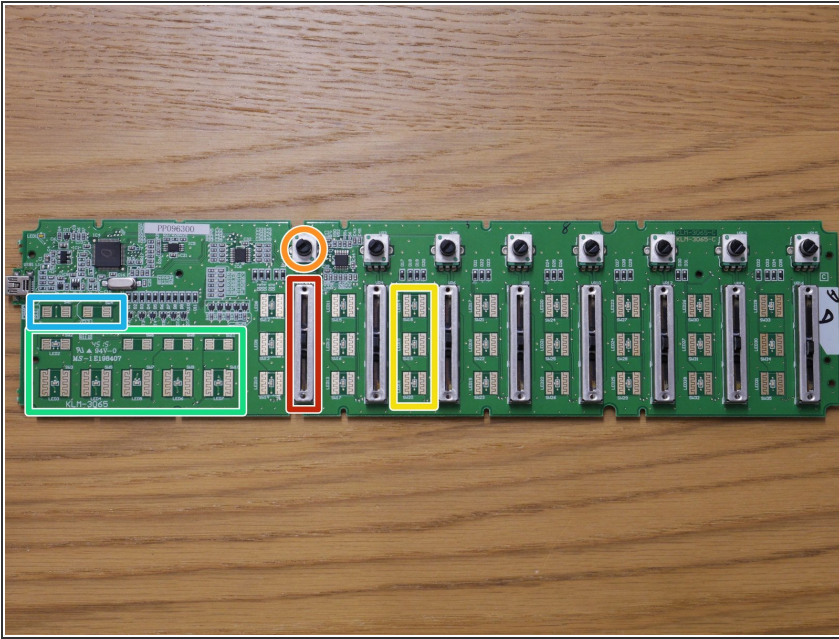
- After opening back lid, remove 14 screws from inside.

Step 4



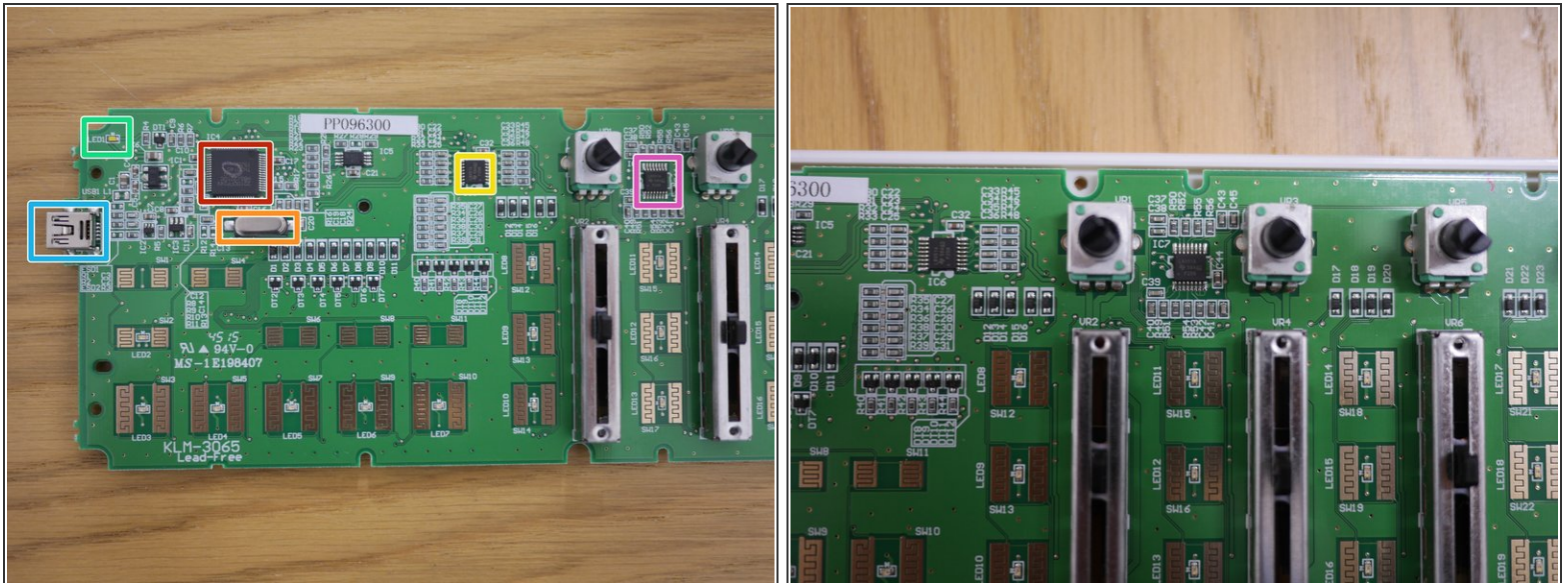
- You can now remove the main circuit board, lifting out the left side first. (as the mini-USB port may hold the right side in.)
- The rubber buttons can now easily come out.

Step 5



- Features: (first picture)
- 8 faders
- 8 potentiometers
- 8 x Solo, Mute, Record buttons
- 5 + 4 transport buttons
- 2 track buttons

Step 6



- Chips
- Labelled with: 2210CFP24V H8S/2210C TH30140 1325
- ROSON Crystal oscillator, labelled with 24.000F20 HO
- LW051A 58A04 P256 Texas Instruments Analog multiplexer
- Mini-usb port
- Power indicator LED

To reassemble your device, follow these instructions in reverse order.