



Samsung Gear VR with Controller Inner Mask Replacement

How to remove the inner mask on Samsung Gear VR with Controller.

Written By: Harumi Hokari



INTRODUCTION

This guide is a prerequisite guide used for accessing the lenses and focus wheel.

TOOLS:

- [Metal Spudger](#) (1)
 - [iFixit Opening Tools](#) (1)
 - [Phillips #000 Screwdriver](#) (1)
-

Step 1 — Inner Mask



- Push the switch on the right-hand side of the device to separate the cover from the main body.
- Pull the cover away from the main device.

Step 2



- Remove the four corner screw covers with a metal spudger.
- i** The screw covers fly off when removed, so make sure to keep track of them.

Step 3



- Use a metal spudger to remove the screw cover centered at the top.

Step 4



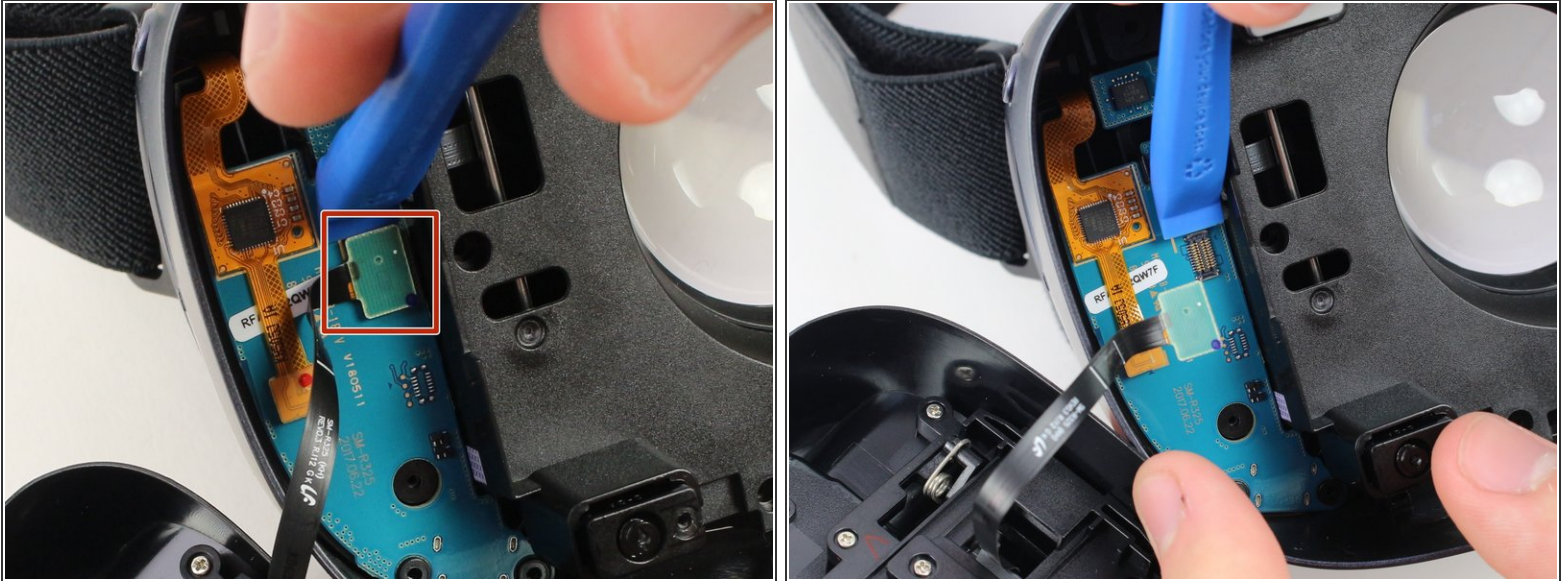
- Remove the six 5mm Phillips #000 screws to detach the front phone mount.
 - Lift the front phone mount up and to the left.
- ⚠ Remove the front phone mount carefully because there is a wire harness on the left side of the headset.

Step 5



- Remove the four 5mm Phillips #000 screws that secure the plate on the left side of the headset.
- Pull the plate away from the motherboard gently.

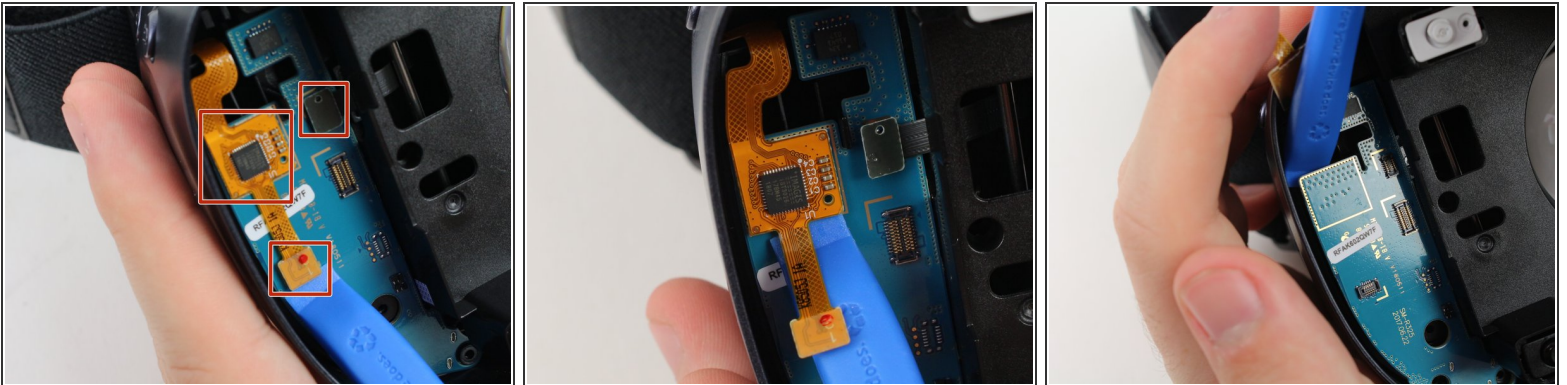
Step 6



- Use the iFixit opening tool to remove the pop connector holding the wire harness to the motherboard.

i You can now completely remove the front phone mount from the headset.

Step 7



- Remove the rest of the pop connectors on the motherboard using the iFixit opening tool.
- Pry at the top of the motherboard with the iFixit opening tool to remove the motherboard.

i The largest pop connector may require more effort to remove.

! Make sure that nothing is connected to the motherboard before you pull it out.

Step 8



- Remove the eight 5mm Phillips #000 screws on the inner mask.
- Gently separate the inner mask from the headset by pulling the mask from the inner sides of the lens sockets.

To reassemble your device, follow these instructions in reverse order.