



Samsung Gear VR with Controller Motherboard Replacement

How to remove the motherboard of your Samsung Gear VR's controller.

Written By: Jake Criscione



INTRODUCTION

If the buttons on your controller are not responding, use this guide to replace the motherboard in your controller. This replacement requires a metal spudger, iFixit opening tool, and Phillips #000 screwdriver.



TOOLS:

- [Phillips #000 Screwdriver](#) (1)
 - [iFixit Opening Tools](#) (1)
 - [Metal Spudger](#) (1)
-

Step 1 — Controller Batteries



- Turn the controller upside down to access the battery compartment.
- ⓘ The battery compartment is located on the opposite side of the buttons.
- Press on the top of the battery plate and slide down to remove the cover.

Step 2



- Remove the AAA batteries using your fingers.

Step 3 — Controller Motherboard



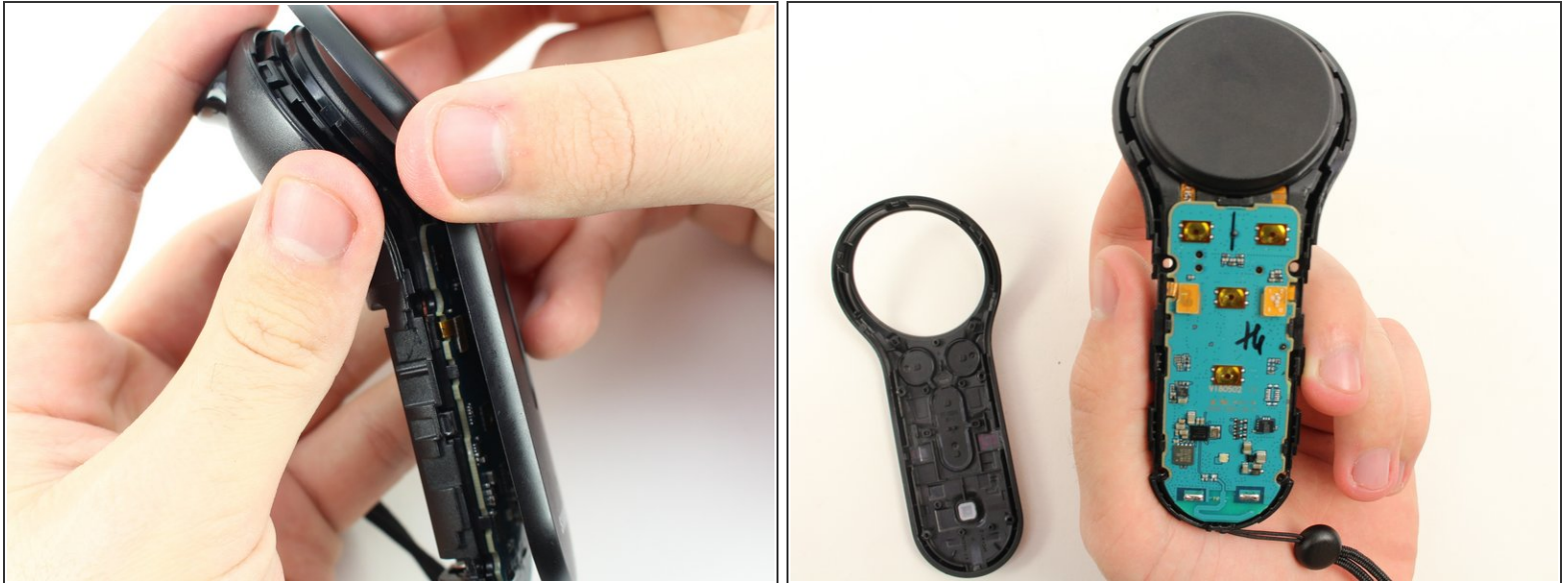
- Remove the four 5mm Phillips #000 screws.

Step 4



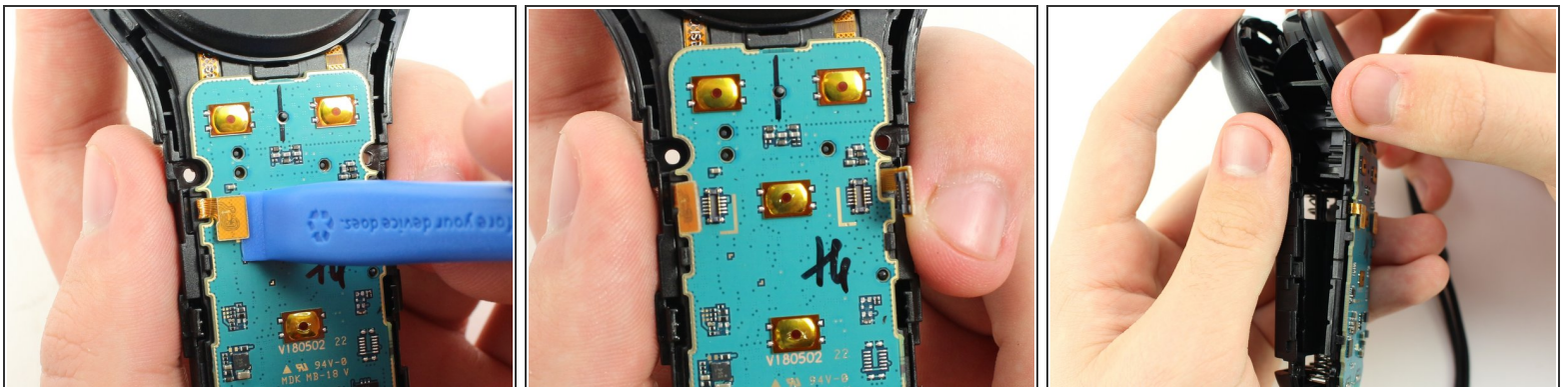
- Use the metal spudger to pry the back side of the controller apart from the front.
- ① You will have to use the spudger in many different spots along the divide before trying to separate the pieces.

Step 5



- Pull apart the two halves of the controller to access the motherboard.

Step 6



- Pry on the two pop connectors with the plastic opening tool to detach the motherboard.
- Separate the motherboard and trackpad from the rear part of the controller.

To reassemble your device, follow these instructions in reverse order.