



How to use Internet Recovery to install macOS to a new SSD

Internet Recovery has a number of useful...

Written By: Taylor Dixon

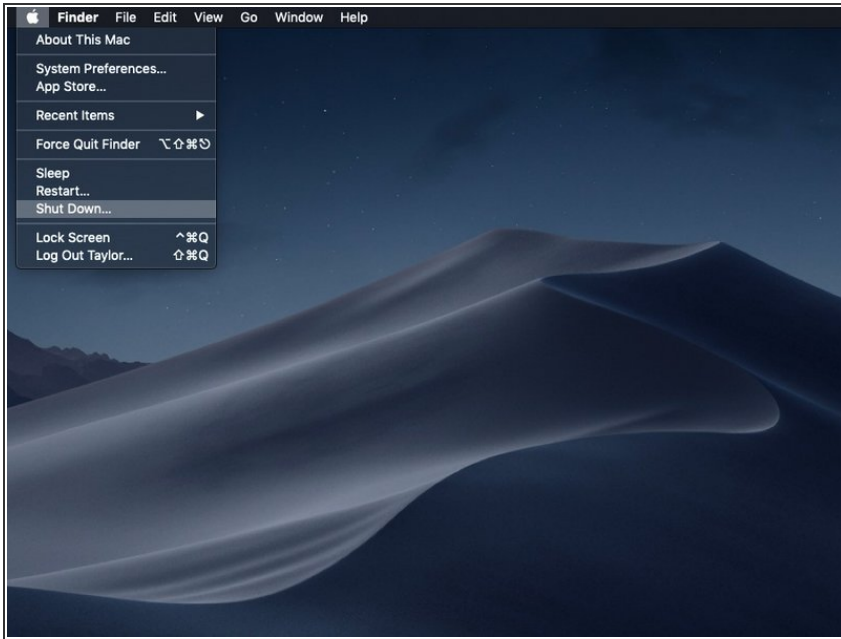


INTRODUCTION

Internet Recovery has a number of useful applications. This guide will show you how to use Internet Recovery to install a fresh copy of macOS to a blank or corrupted SSD.

Internet Recovery is only available on Apple computers made after 2009. If your computer was released in 2010 or 2011, you may need to update to the latest version of macOS to enable Internet Recovery.

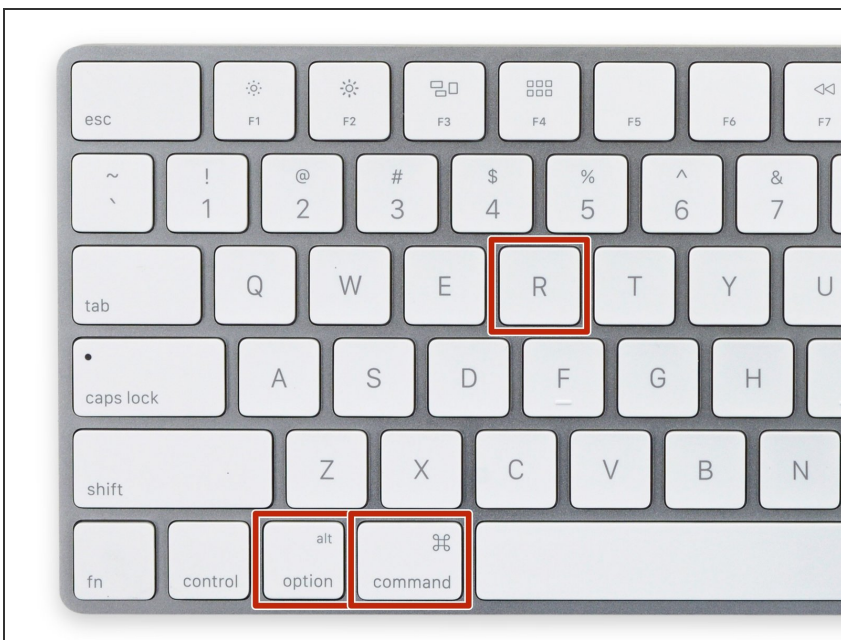
Step 1 — How to Start Up a Mac in Internet Recovery Mode



- Shut down the computer.

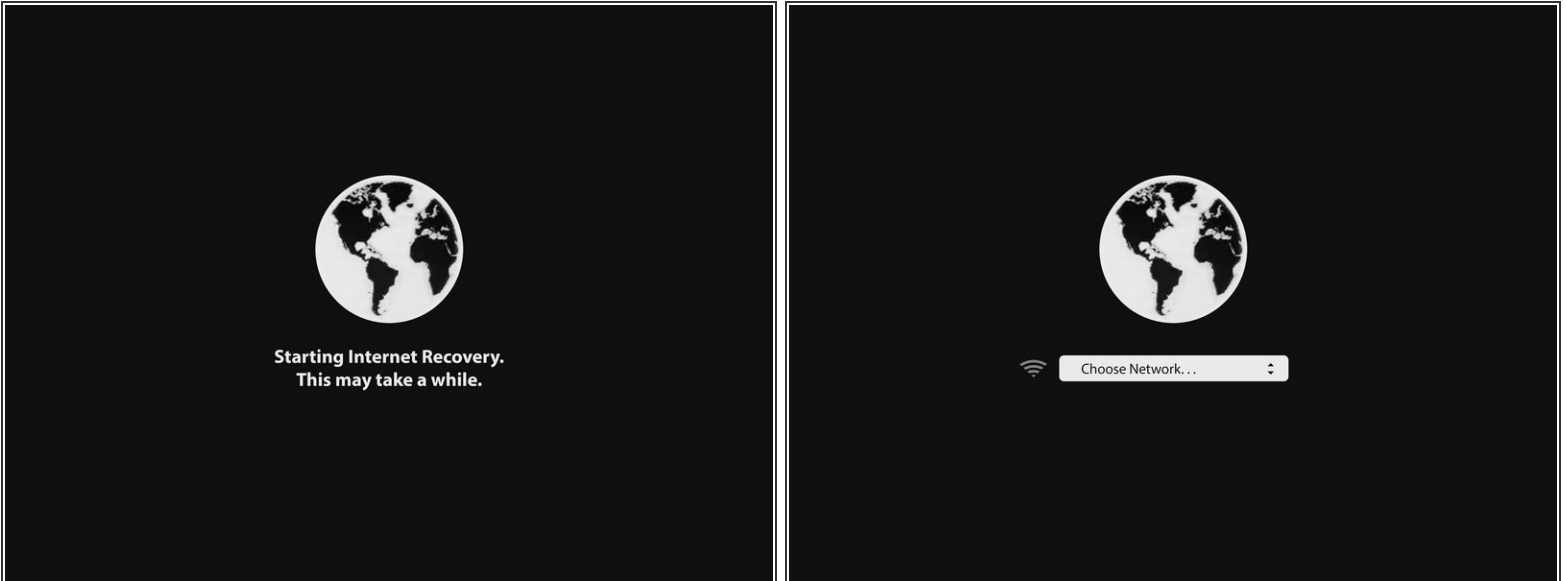
i If you're installing macOS to a new drive with Internet Recovery, you can skip this step.

Step 2



- Once the computer is completely shut down, press the power button, then immediately press and hold the key combination **cmd + option + R**.

Step 3



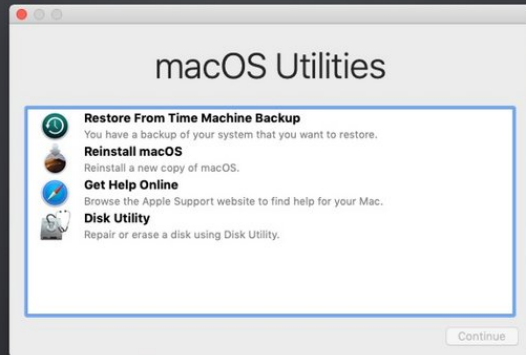
- When the spinning globe animation appears, you can release the keys.
- The globe will spin while Internet Recovery starts up. If you are not using a wired internet connection, a *choose network* prompt will appear. Use this menu to connect the computer to a WiFi network.

Step 4



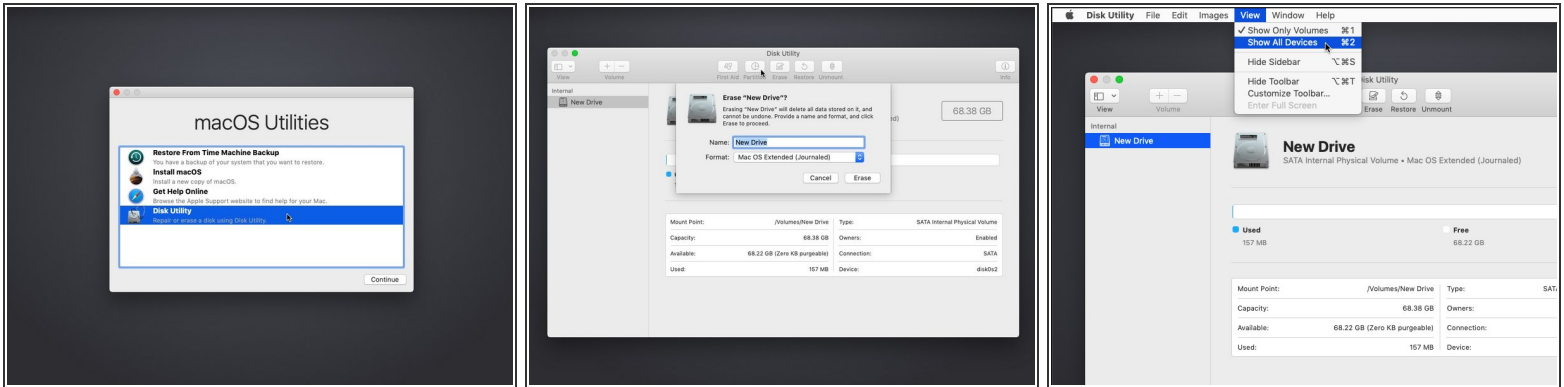
- Once a network connection has been established, a progress bar will appear underneath the spinning globe.
- ⓘ This process is prone to timing out. If you receive an error, try again using a cable connection to reach the internet rather than WiFi. Depending on your model, you may need an adapter to accomplish this.

Step 5



- When Internet Recovery has loaded, you will see the macOS recovery screen.

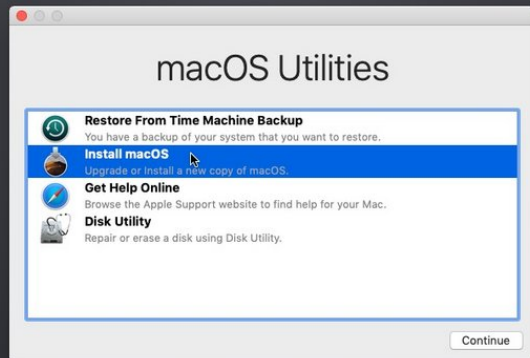
Step 6 — How to use Internet Recovery to install macOS to a new SSD



- i** Before you can install macOS to the new drive, you'll need to format the drive so the installer can recognize it.

 - Open Disk Utility from the recovery menu, select your drive, and click the *Erase* button toward the top of the Disk Utility window.
 - Make up a name for your drive, and make sure the format is set to *Mac OS Extended (Journaled)* or *APFS*. If there is a "Scheme" option, set it to *GUID Partition Map*.
 - i** If you don't see your drive listed in the Disk Utility menu, select *Show All Devices* from the *View* section of the menu bar.
- Once the new drive is formatted, press Command + Q to exit Disk Utility and return to the recovery menu.

Step 7



- Back at the recovery menu, select *Install macOS* .

Step 8



- Follow the prompts to install macOS, selecting the newly formatted disk as the target for the installation.

Your computer may restart several times during the installation of macOS. Once the installation is complete, you can use [Migration Assistant](#) to transfer data from your old drive to the new one.