



Dell Latitude E6420 RAM Replacement

Written By: Sam Towe





TOOLS:

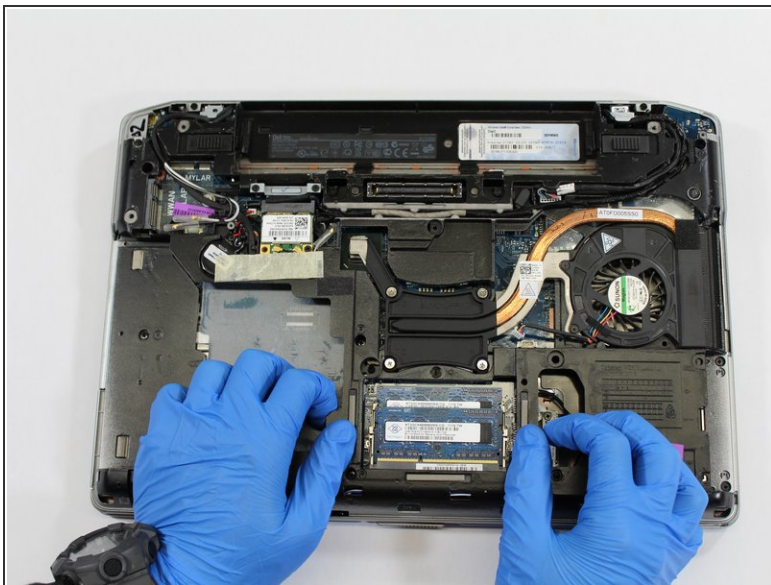
- [Small Phillips Head Screwdriver](#) (1)
-

Step 1 — Rear Panel Removal



- Remove the eight screws holding down the rear panel using a Phillips #0 Screwdriver. Carefully remove base cover by hand.

Step 2 — RAM



- Squeeze the tabs on opposing sides of the RAM cards to unlock them.
- Gently remove the RAM cards by hand.

To reassemble your device, follow these instructions in reverse order.