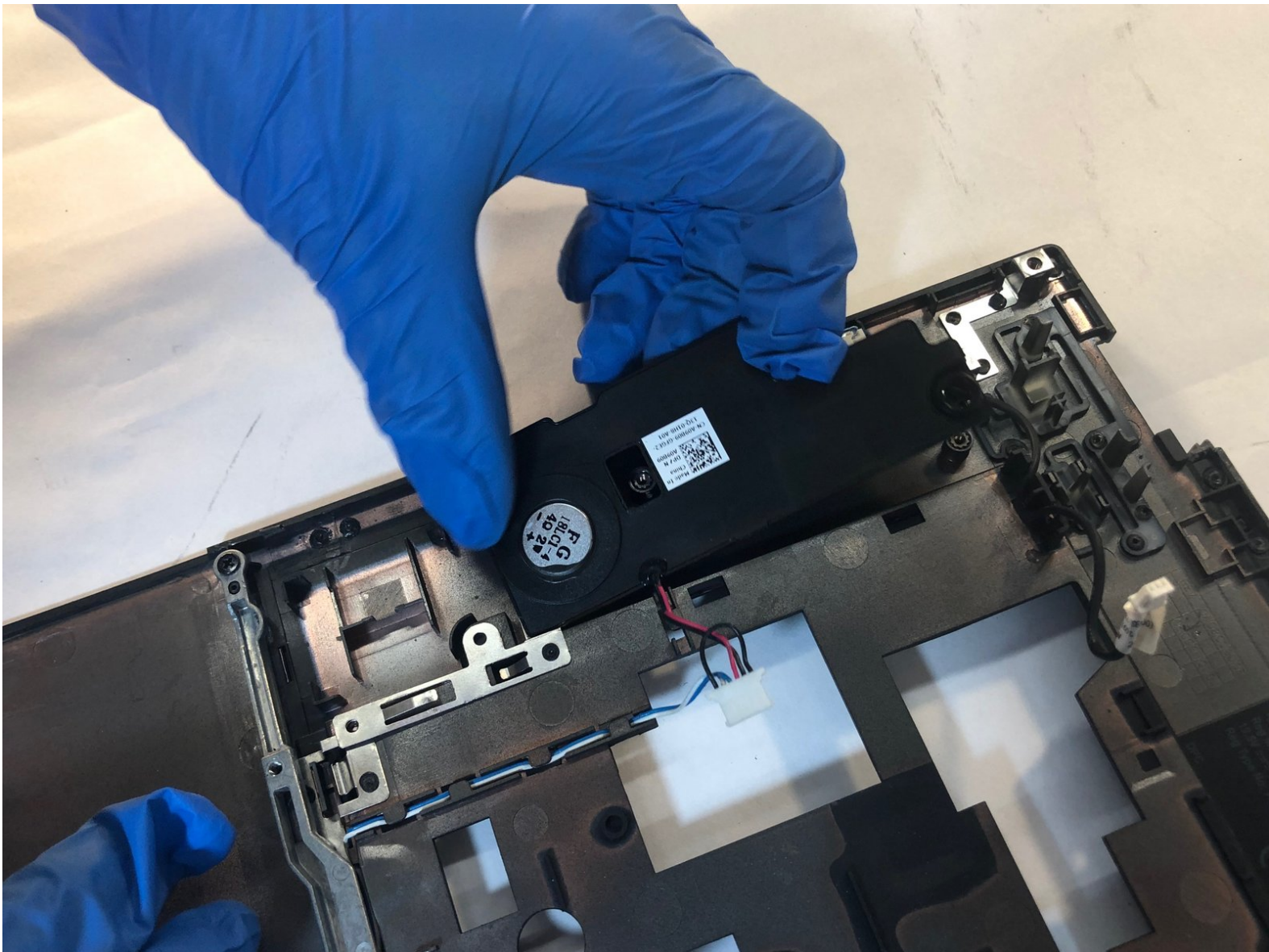




Dell Latitude E6510 Speaker Replacement

How to replace the speaker in a Dell Latitude E6510.

Written By: Chris Laurencio Jr.



INTRODUCTION

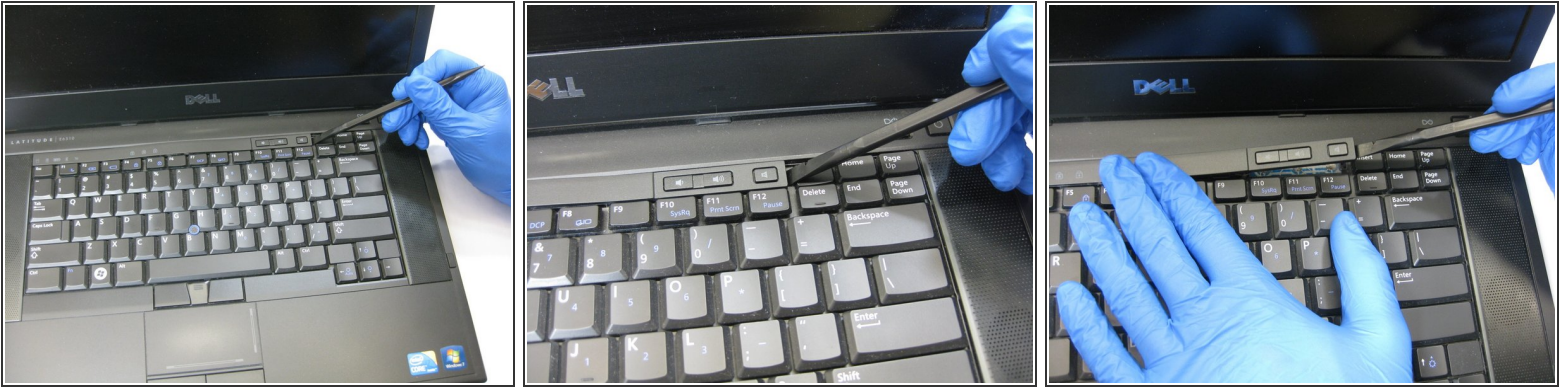
As a quick warning before you dive into replacing your speakers, this will be a long, hard task. By the time you will even see the speakers the laptop will be completely taken apart. Make sure to not lose your screws and ensure you have plenty of time and space before you follow this guide.



TOOLS:

- [Phillips #1 Screwdriver](#) (1)
-

Step 1 — Keyboard



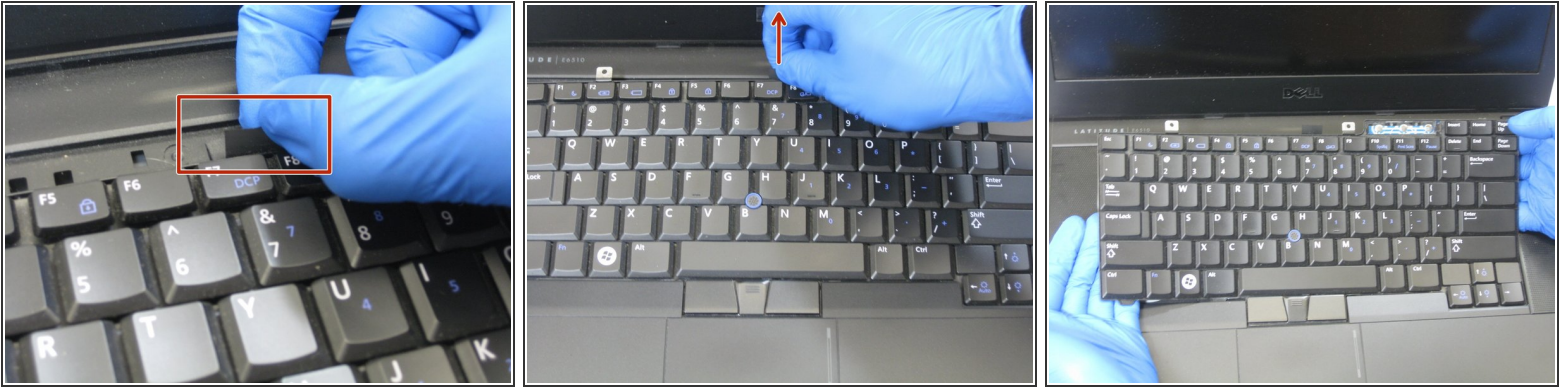
- Open the laptop and locate the volume panel on the keyboard.
- Use the spudger to get underneath the righthand side of the panel and gently pry up the side.

Step 2



- Remove the detached volume panel from the keyboard.
- Locate the two screws holding the keyboard in place. Then Remove these screws with a Philips PH1 head screwdriver.

Step 3



- Locate the tab near the back of the keyboard.
- Pull upwards on the tab to start removing the keyboard and then using both hands at the sides, pull until the keyboard comes free.

Step 4 — Battery



⚠ Make sure the device is shutdown

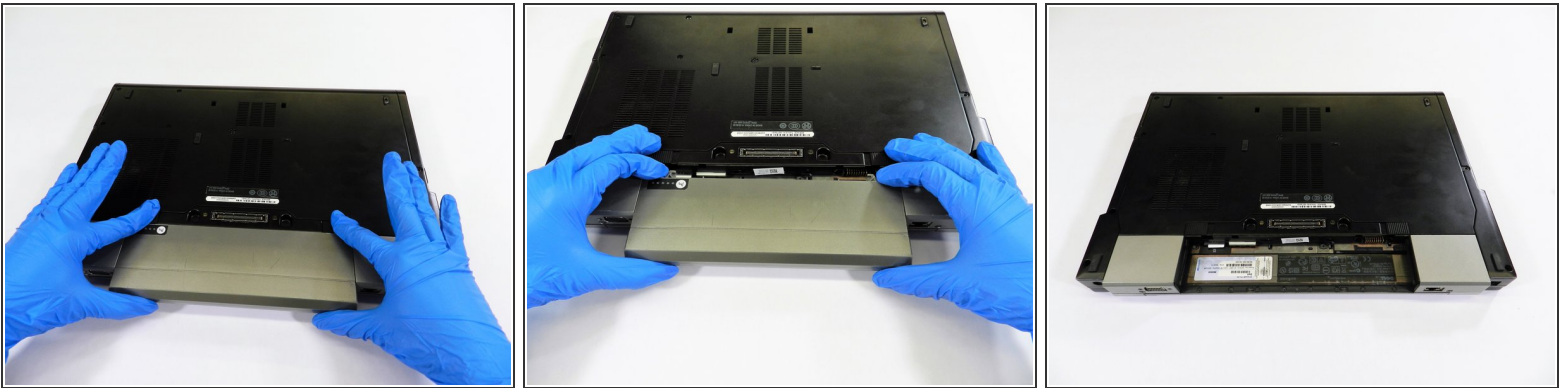
- Position the laptop upside down with the battery facing towards you.
- Locate the battery latches circled in red.

Step 5



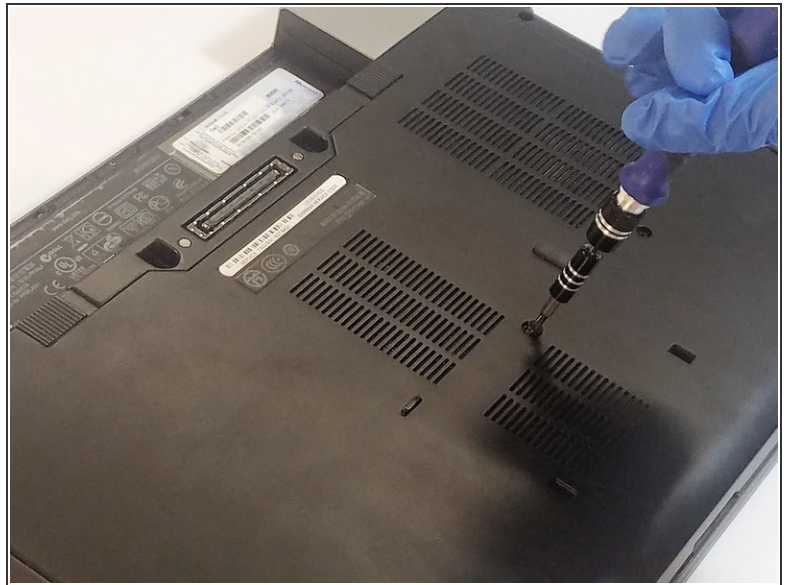
- Gently slide both latches inward until you hear both latches release.

Step 6



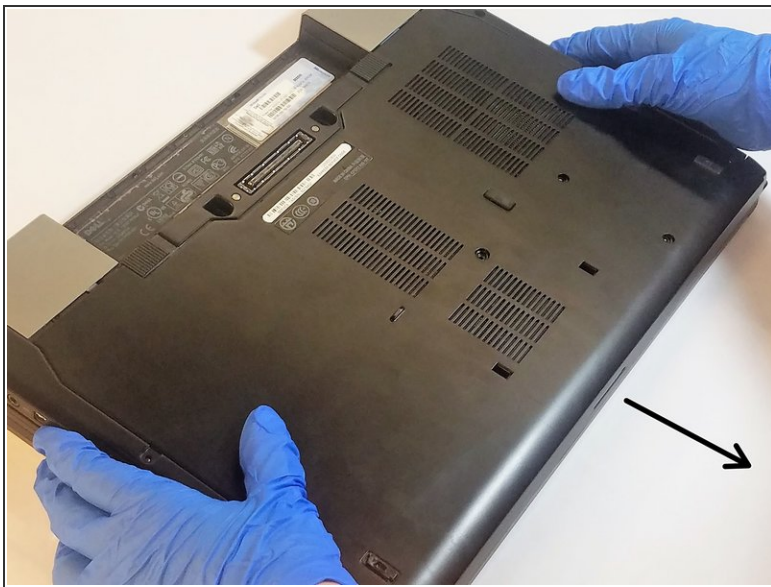
- Pull the battery towards yourself as shown until completely removed from the computer.

Step 7 — Fan



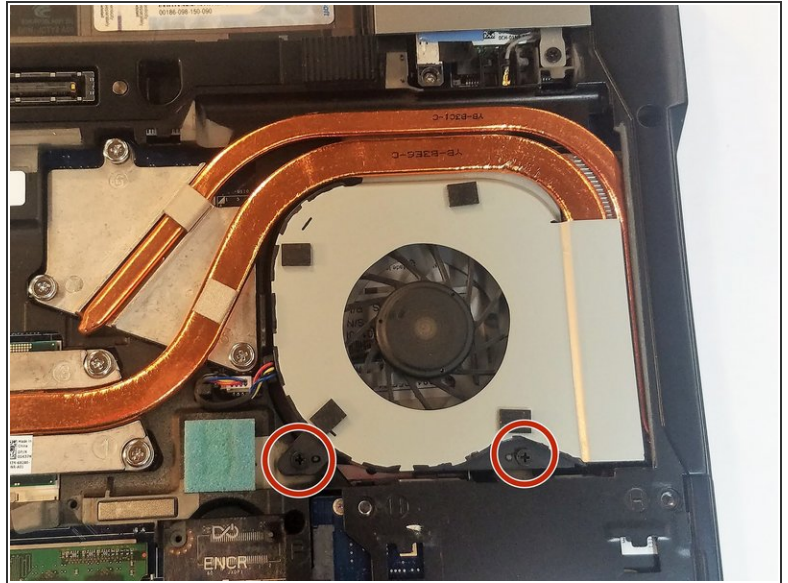
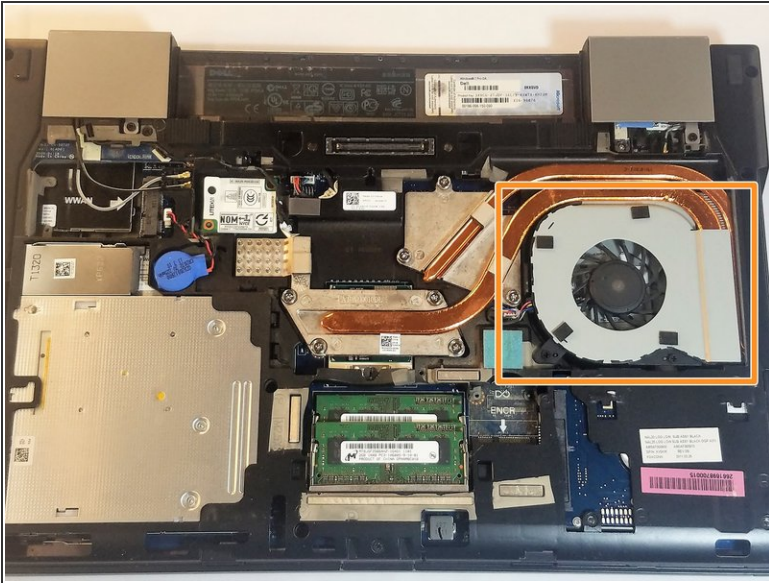
- Flip over laptop and locate door panel screws.
- Remove the Screws.

Step 8



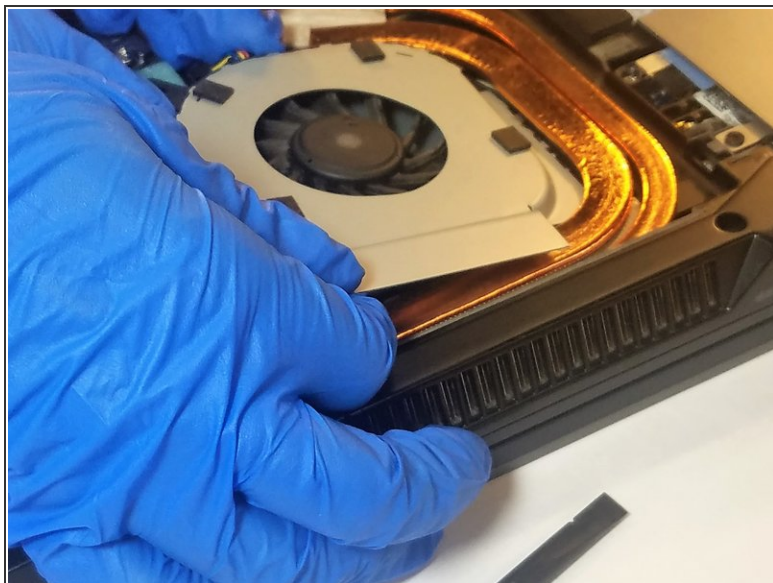
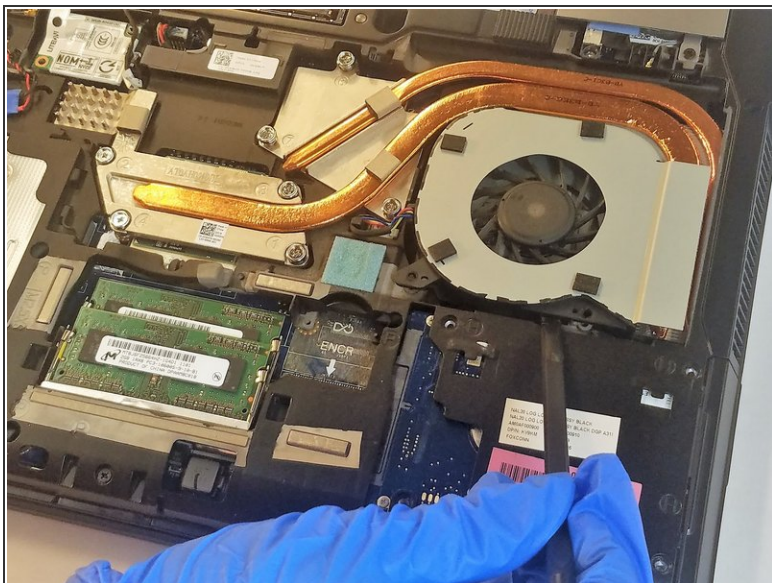
- Slide and remove the access door.

Step 9



- Locate the fan and two fan screws.
- Remove the 2 screws using a PZ0 Phillip head screwdriver.

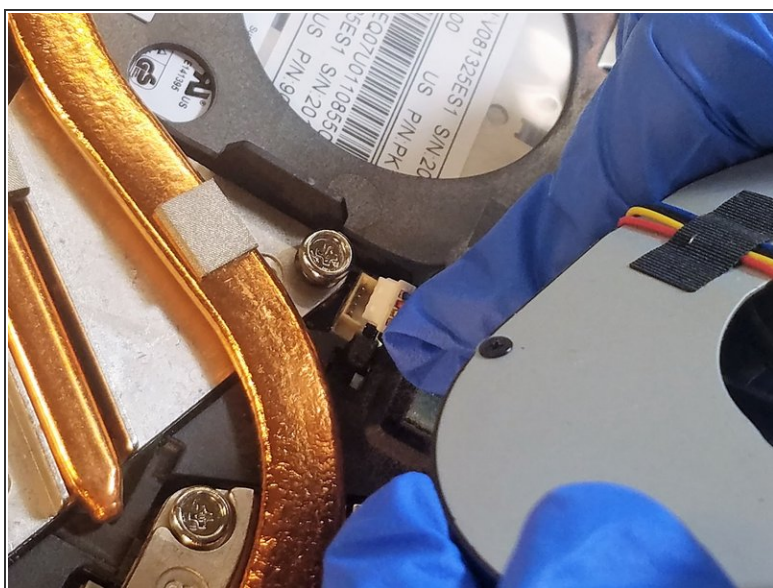
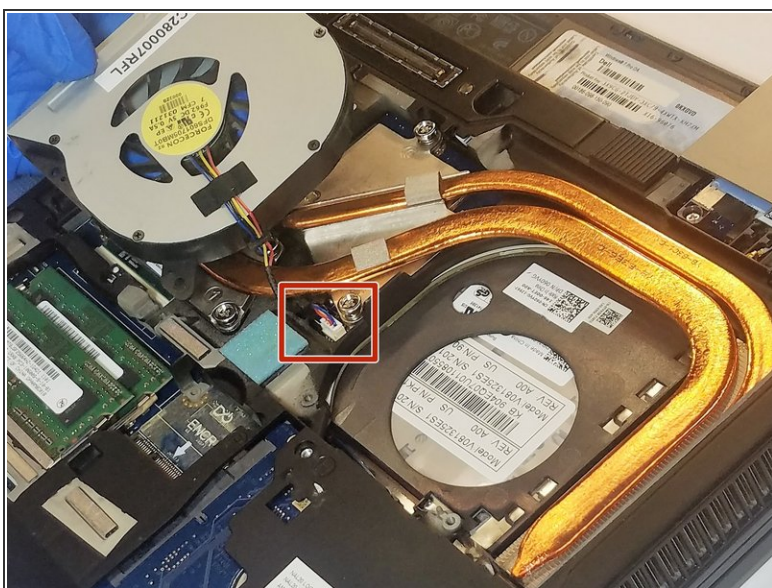
Step 10



- Using a plastic spudger, gently pry the fan upwards.
- Once the fan has been loosened, slowly remove the main fan component.

⚠ Do not pull too hard as there is still a wire attached.

Step 11



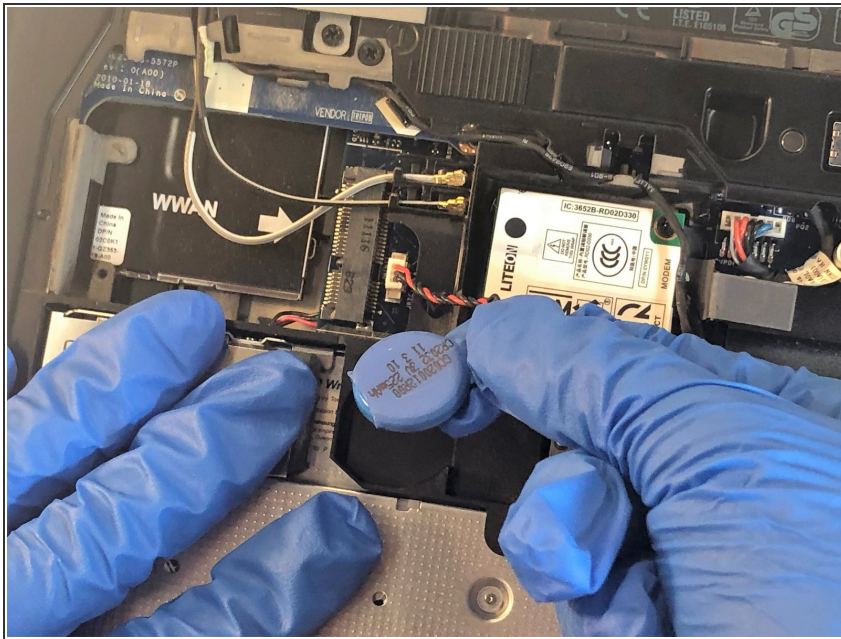
- Locate the wire holding the fan in place and detach the clip.

Step 12 — Speaker



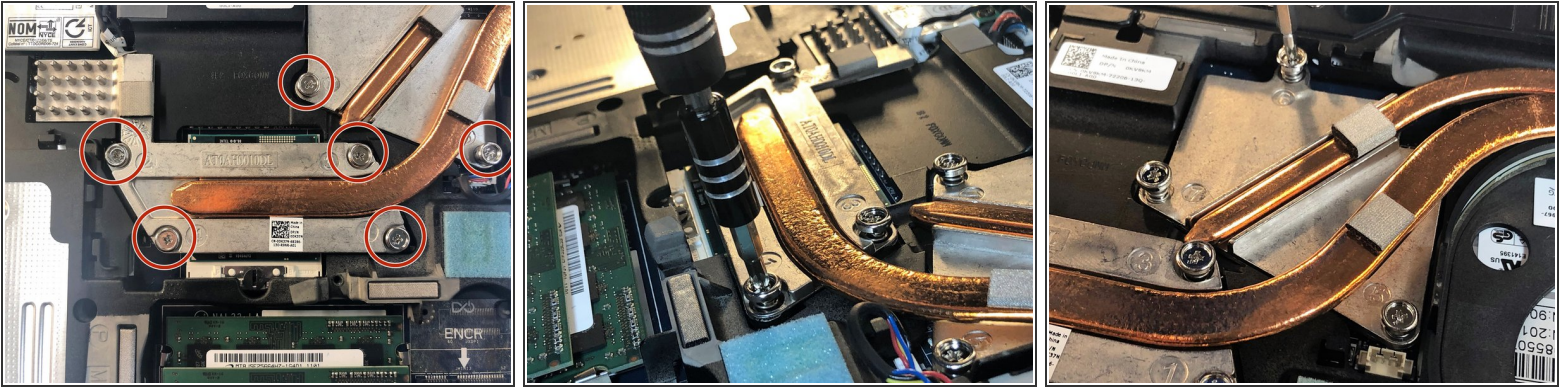
- Remove the hard drive.
- Pull the drive right and out of the computer.

Step 13



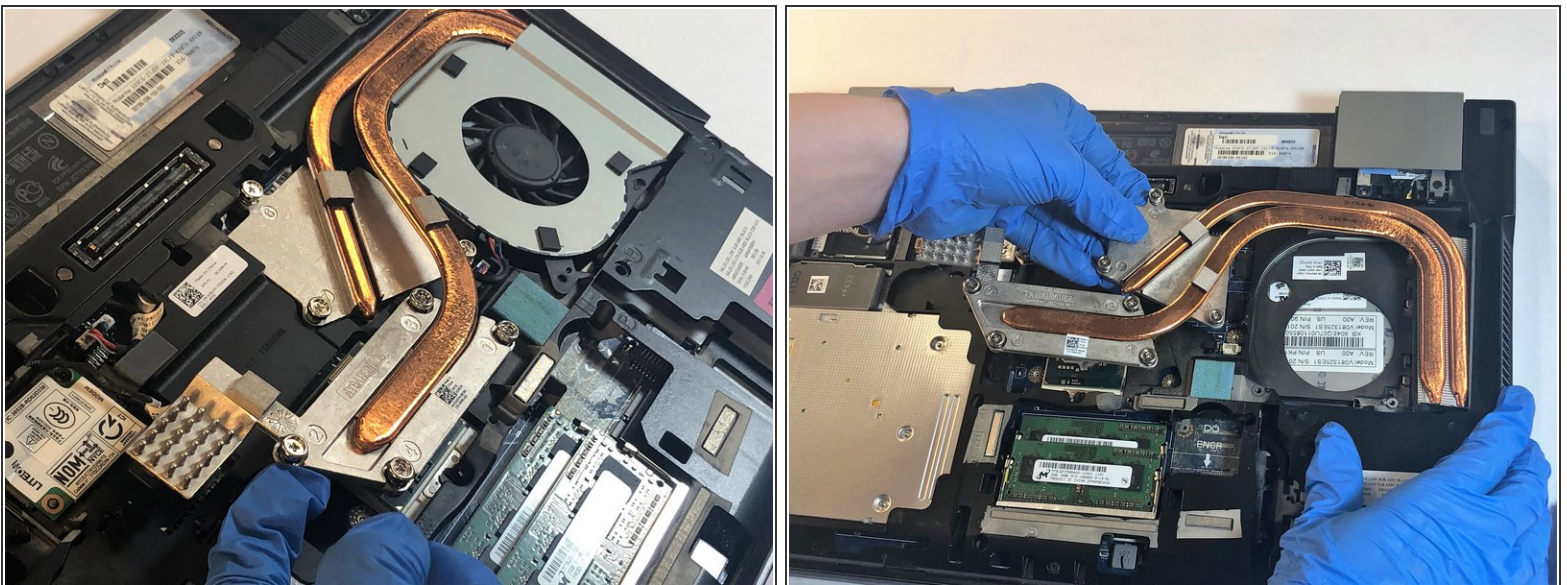
- Remove the small battery.
- Undo the blue circle first.
- ⚠ Pull out the end of the cord by the plastic part to avoid damage to the wire.

Step 14



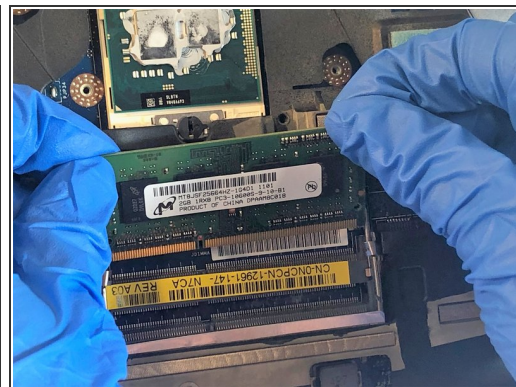
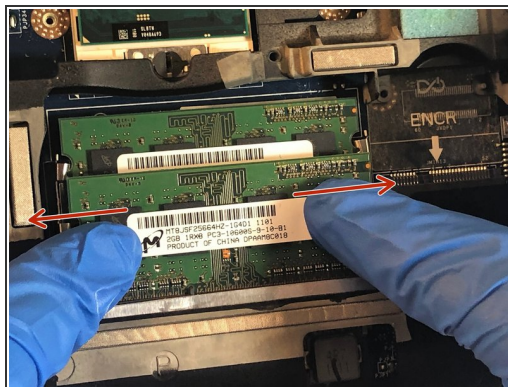
- Loosen but do not remove the silver screws surrounding the heat sink using a PZ1 screwhead.

Step 15



- Remove the heat sink from the laptop.

Step 16



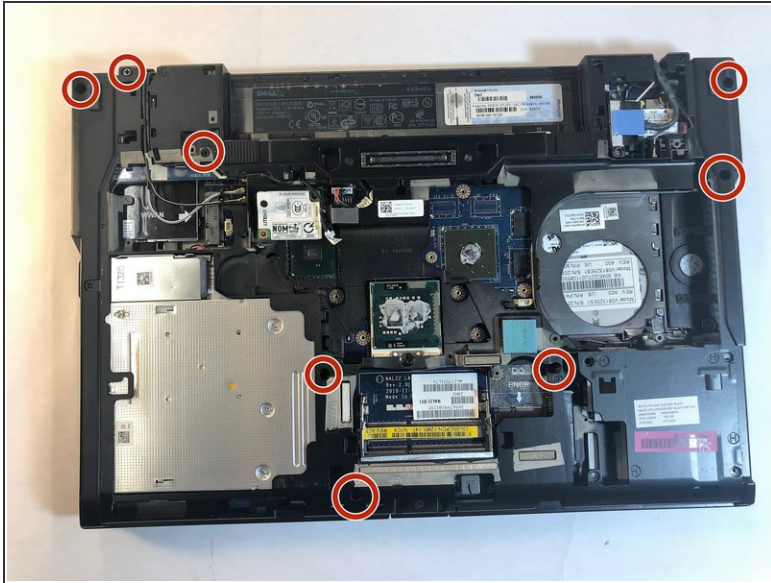
- Push the silver clips on both sides of the memory cards outwards.
- Gently pull the cards out one at a time.

Step 17



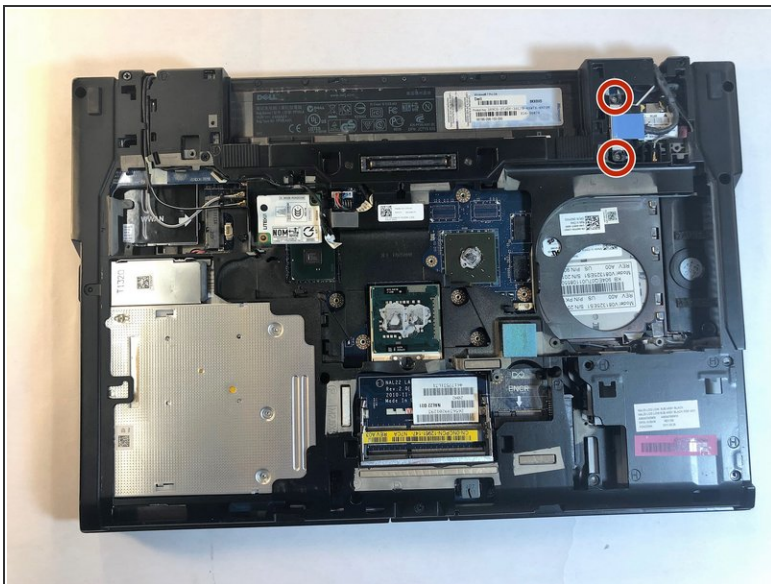
- Unscrew the side panels on both sides and slide them off.

Step 18



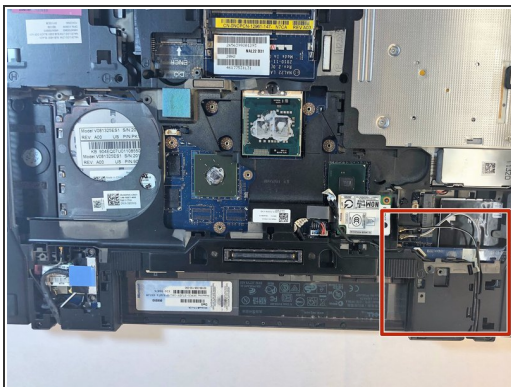
- Remove the screws of the back framework.

Step 19



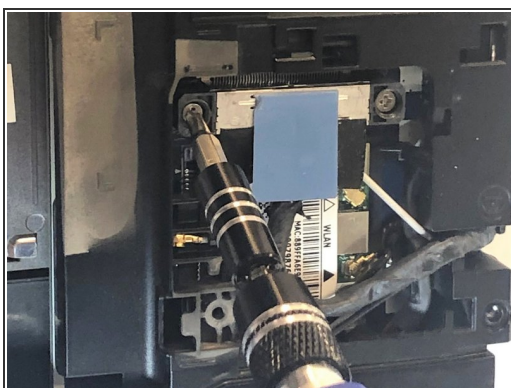
- Loosen the two highlighted screws, do not remove.

Step 20



- Undo the cables until they are not attached to the back half of the keyboard.
- Pull the cables backwards and to the side of the laptop.

Step 21



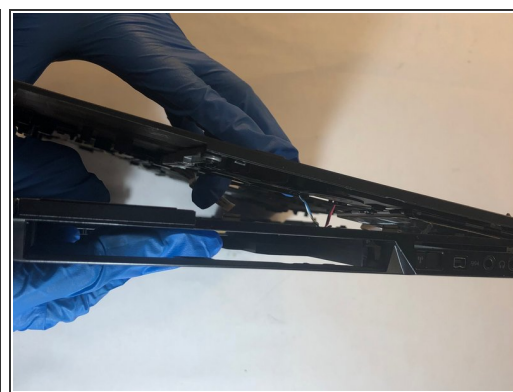
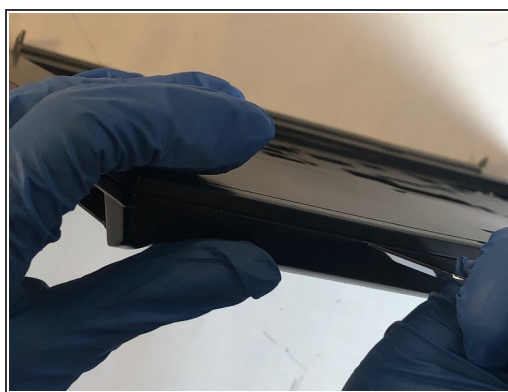
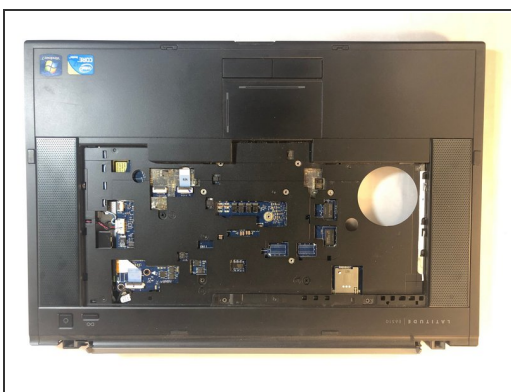
- Undo the other side also.
- ⚠ The cables should only be loose, not removed.

Step 22



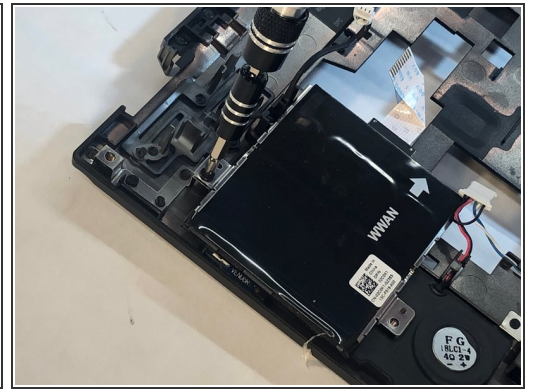
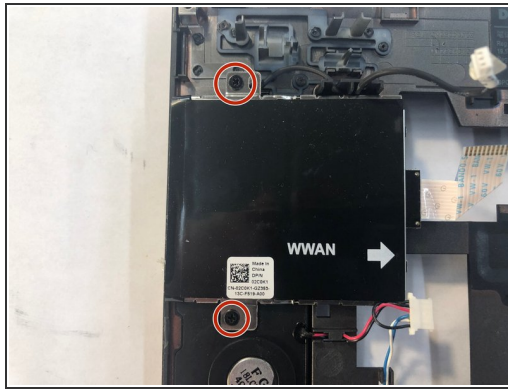
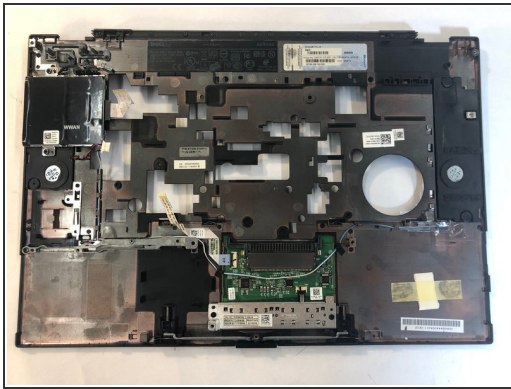
- Partially open the laptop.
- Slide the top half of the laptop backwards towards yourself to undo it from the bottom half.

Step 23



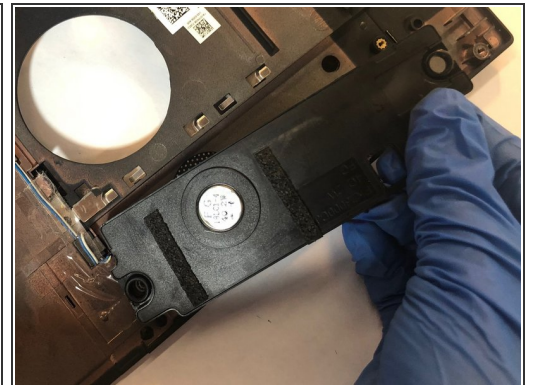
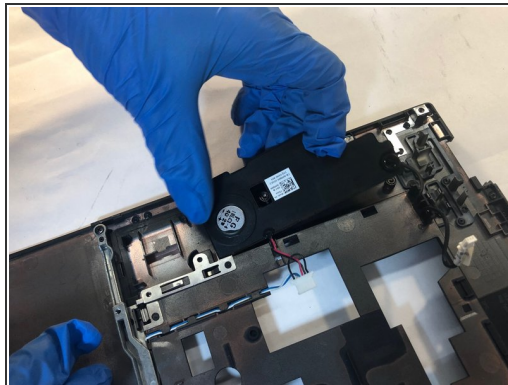
- Pry the frame work of the laptop off using a plastic splunger.
- ⚠ Proceed slowly, any screws that may have been missed can break your laptop if not removed.

Step 24



- Remove the screws from the wireless detector.
- Remove the detector.

Step 25



- Remove the screws from the top and bottom of both speakers.
- Remove the speakers.

To reassemble your device, follow these instructions in reverse order.