



# Samsung Chromebook 3 Daughterboard Replacement

This guide will show you how to replace the daughterboard.

Written By: Sarah Westberg



## INTRODUCTION

This guide will show you how to replace the daughterboard in a Samsung Chromebook 3. The right side USB and headphone jack are soldered to the board, requiring a full daughterboard replacement to fix a malfunctioning port.



### TOOLS:

- [Phillips #00 Screwdriver](#) (1)
- [iFixit Opening Tools](#) (1)
- [Spudger](#) (1)



### PARTS:

- [Samsung XE500C13 Chromebook Lower Case](#) (1)
- [Samsung XE500C13 Chromebook Battery](#) (1)
- [Samsung Chromebook XE500C13 I O and Wi-Fi Board](#) (1)

## Step 1 — Bottom Case



- Place the Chromebook face down so that the bottom case is exposed.
- Using a Phillips #00 screwdriver, remove nine 4.6mm screws from the back casing.

## Step 2



- Use a iFixit opening tool to gently pry the case up from the vent on the hinge side of the Chromebook.
- ⓘ You should hear a popping sound as the connectors disengage inside the case.

## Step 3



- Lift the case up and off the device

## Step 4 — Battery



- Locate the battery and remove the four 4.6mm screws at the corners which attach it to case using a Phillips #00 screwdriver.



## Step 5



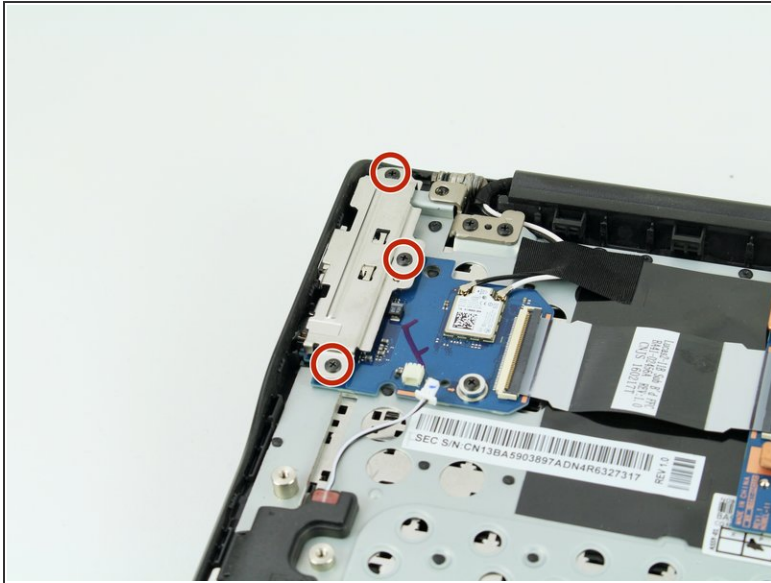
- Use a spudger to gently pry the power cable cord upwards from the motherboard.

## Step 6



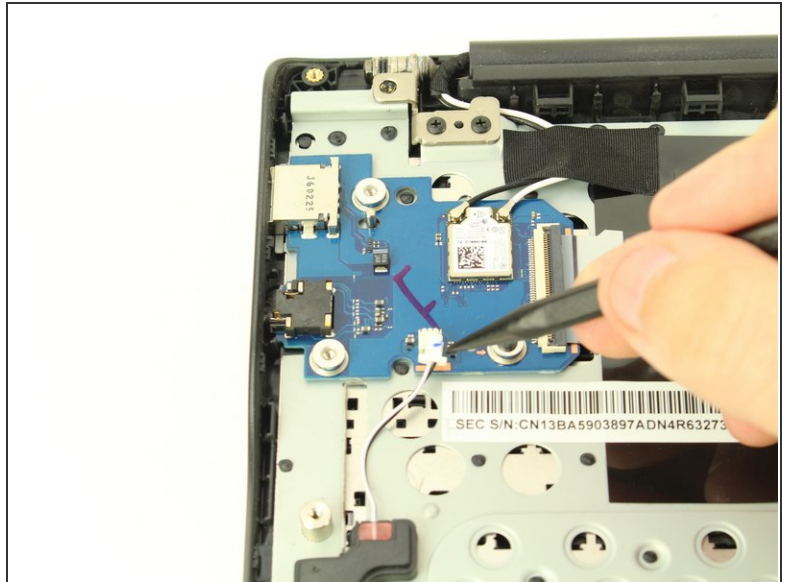
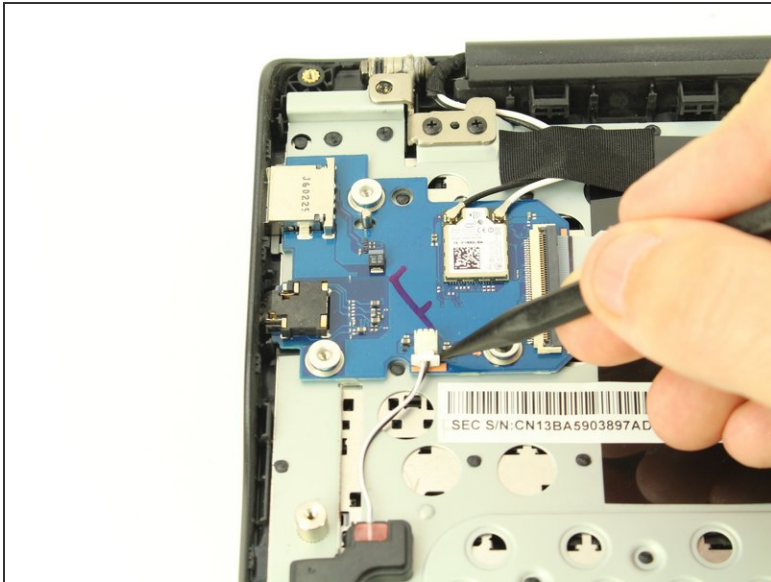
- Lift the battery up and out from the case.

## Step 7 — Daughterboard



- Before you begin the process of removing the daughterboard, you will need to remove the port case. Using a Phillips #00 screwdriver, remove the three 4.6mm screws.

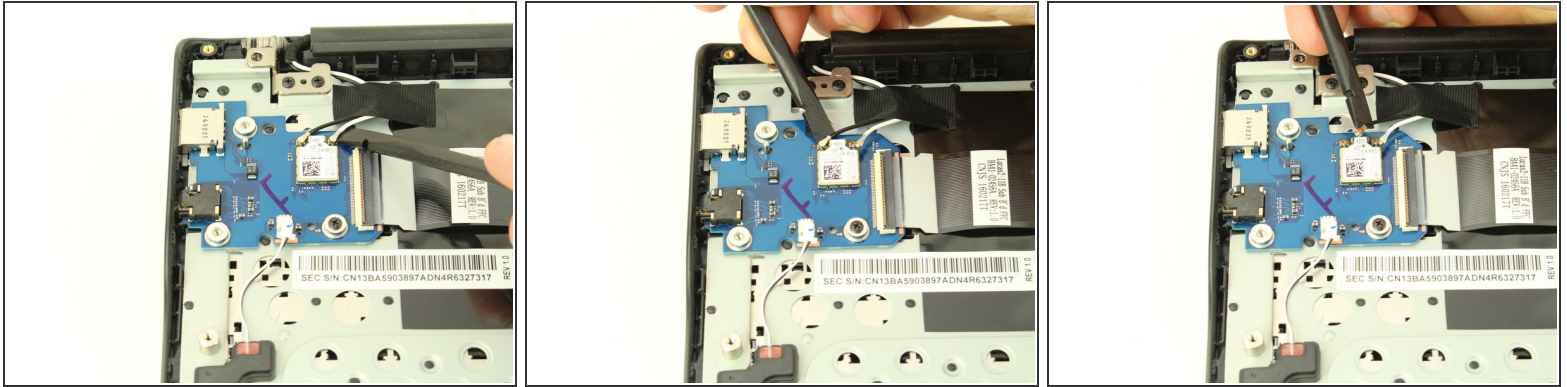
## Step 8



- Use a spudger to unhook the cable connector from the speaker cable.

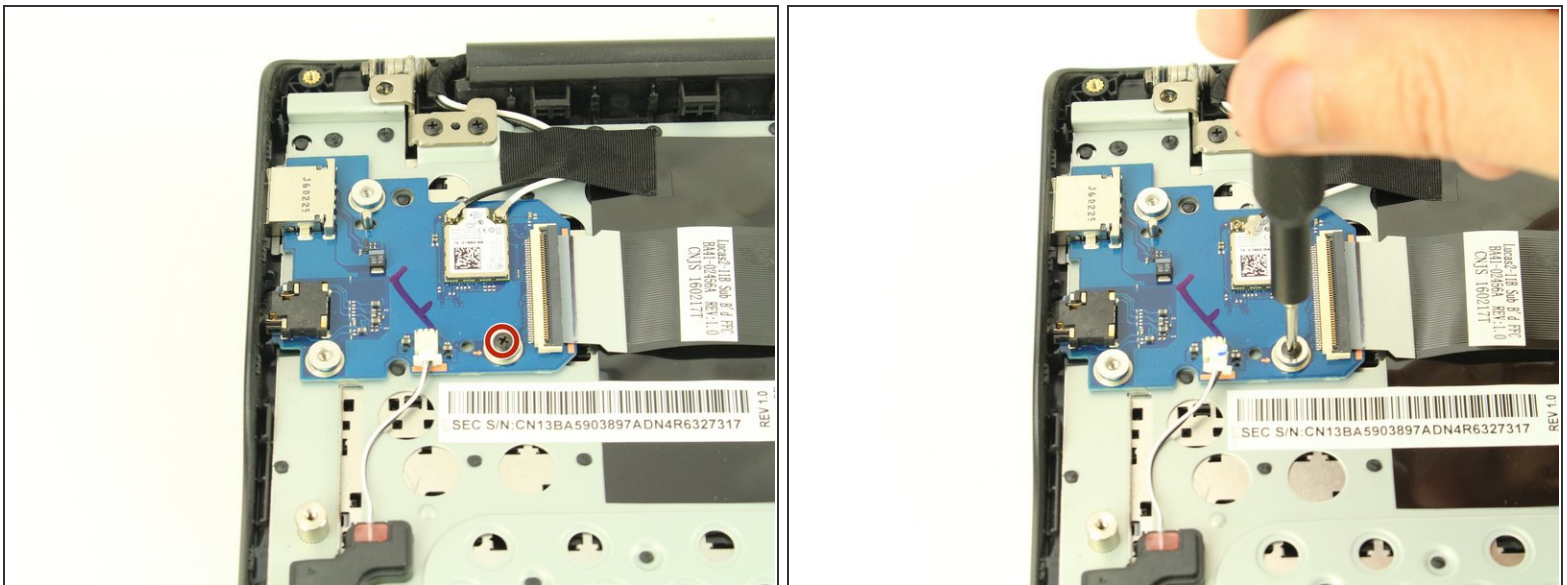


## Step 9



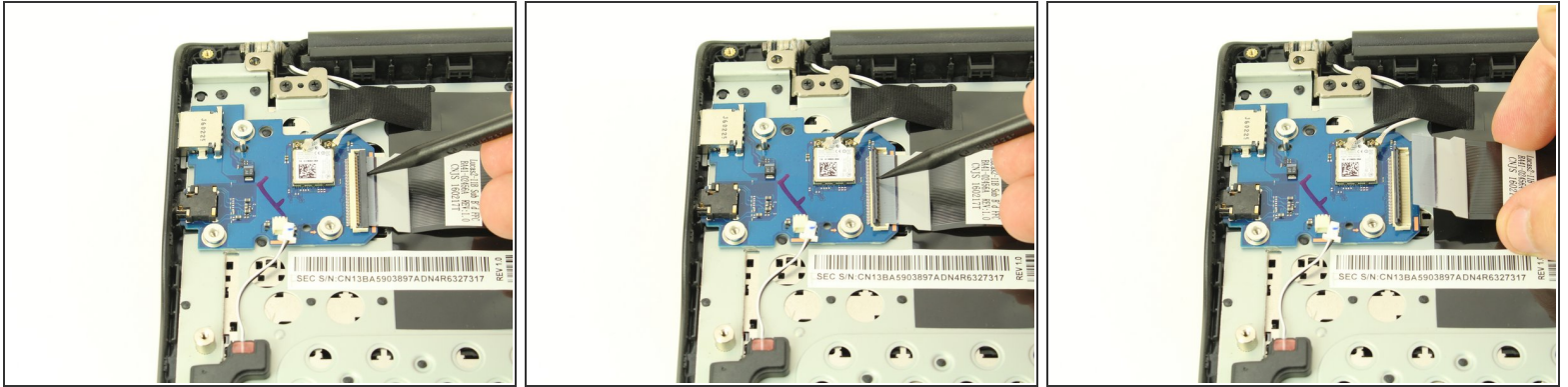
- Pry the small coaxial cables upwards from the connectors on the wireless chip.

## Step 10



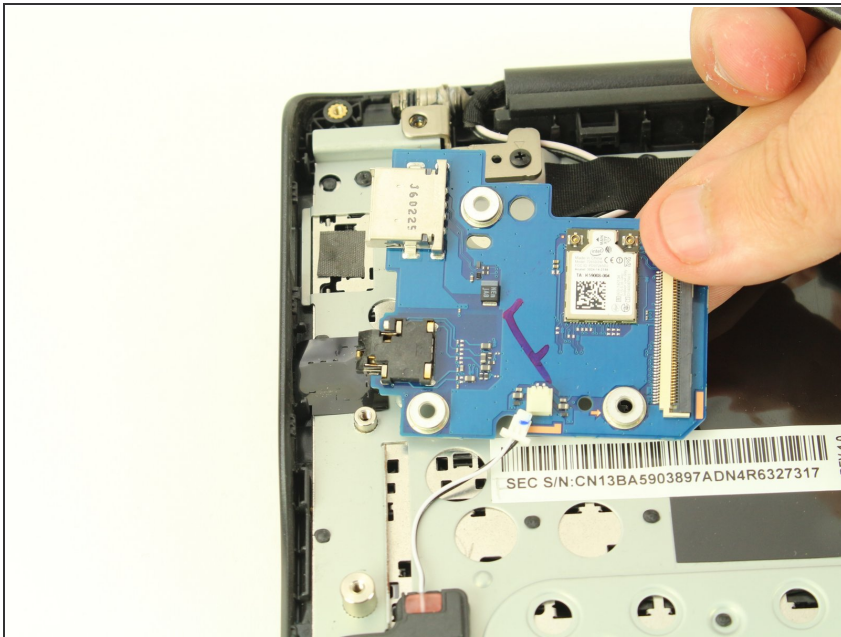
- Using the Phillips #00, unscrew one 4.6mm screw from the daughterboard.

## Step 11



- Use a spudger to lift the gray plastic bar on the zif connector up, then use your fingers to remove the cable ribbon.

## Step 12



- Loosen the daughterboard from the USB port with a spudger as there is some adhesive underneath, and you're ready to remove the daughterboard.

To reassemble your device, follow these instructions in reverse order.