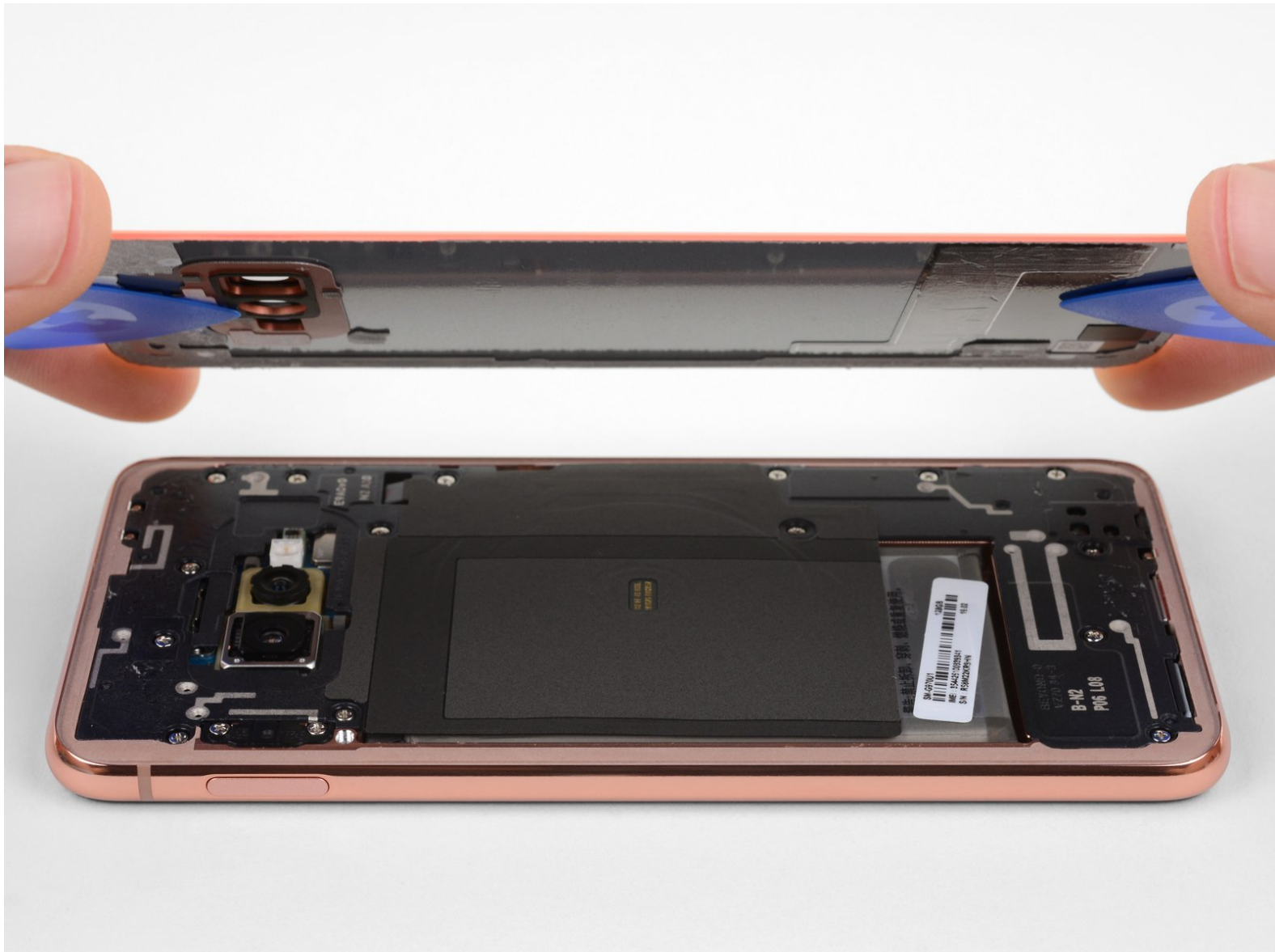




Samsung Galaxy S10e Back Cover Replacement

Remove or replace the back cover of a Samsung Galaxy S10e.

Written By: Adam O'Camb



INTRODUCTION

Use this guide to remove or replace the glass back cover on a Samsung Galaxy S10e.



TOOLS:

- [iOpener](#) (1)
- [Suction Handle](#) (1)
- [iFixit Opening Tool](#) (1)
- [iFixit Opening Picks \(Set of 6\)](#) (1)
- [Tweezers](#) (1)
- [Isopropyl Alcohol](#) (1)



PARTS:

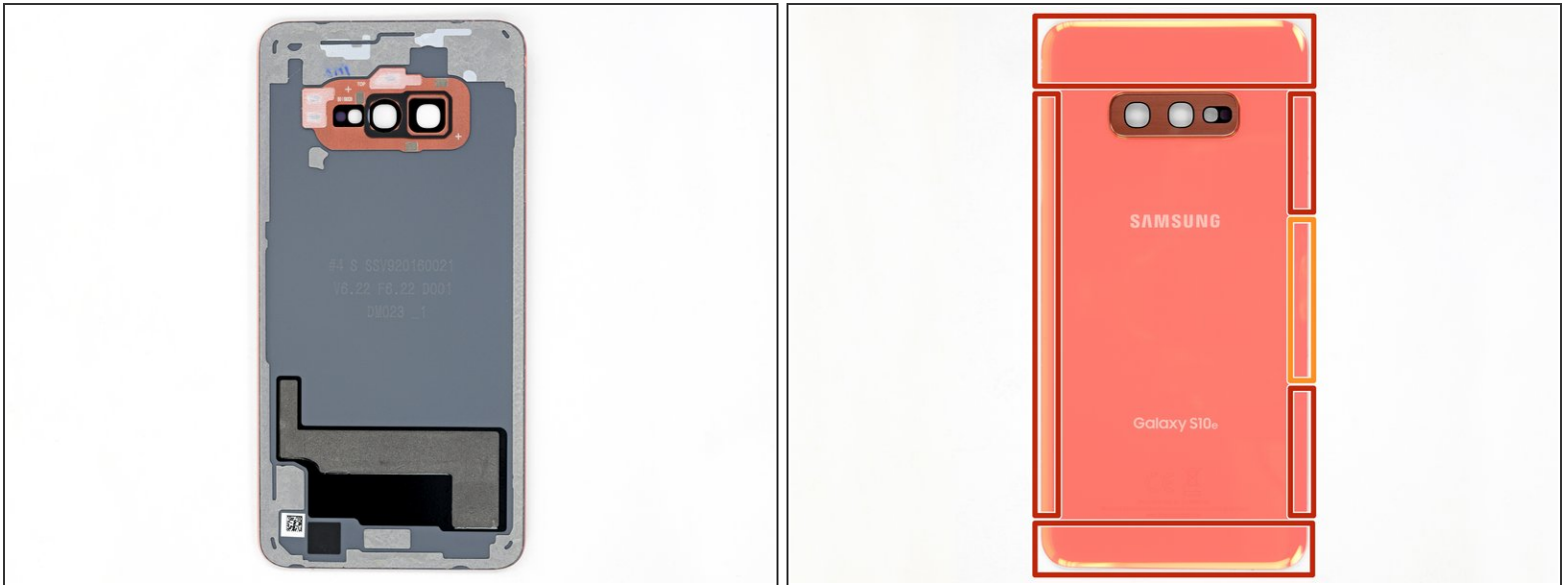
- [Galaxy S10e Rear Glass Panel/Cover](#) (1)
- [Galaxy S10e Rear Cover Adhesive](#) (1)
- [Tesa 61395 Tape](#) (1)

Step 1 — Heat the back cover



- i** Opening your phone will compromise its waterproof seals. Have replacement adhesive ready before you proceed, or take care to avoid liquid exposure if you reassemble your phone without replacing the adhesive.
- Turn your phone off completely before you begin this repair.
- [Prepare an iOpener](#) and heat the back of the phone along the right edge for about two minutes. This will help soften the adhesive securing the back cover.
- i** You may need to reheat and reapply the iOpener several times to get the phone warm enough. Follow the iOpener instructions to avoid overheating.
- ⚠** A hair dryer, heat gun, or hot plate may also be used, but be careful not to overheat the phone—the OLED display and internal battery are both susceptible to heat damage.

Step 2 — Prepare to slice the adhesive



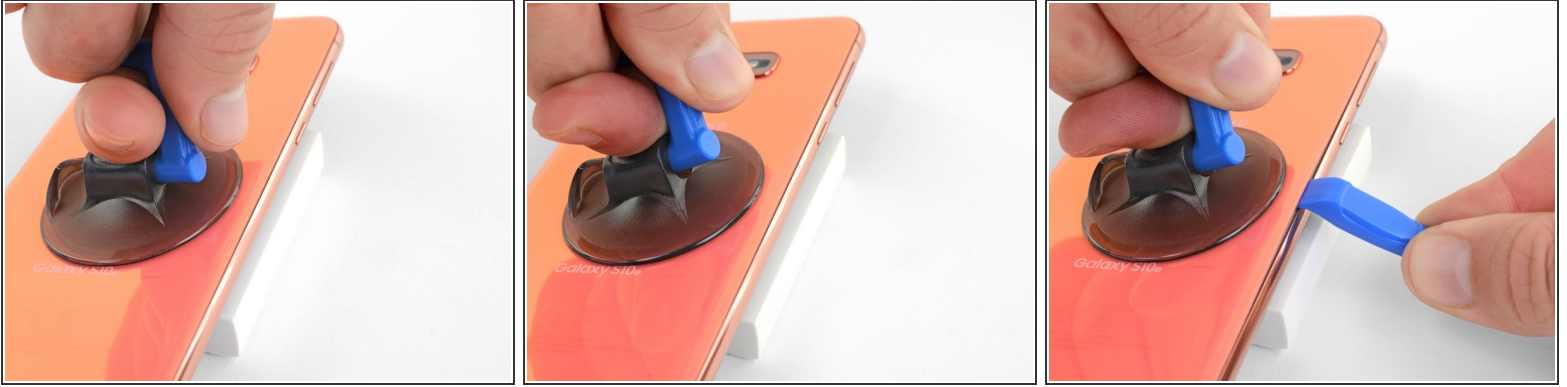
- In the following steps, you'll be cutting through the adhesive securing the back cover.
- ⓘ The adhesive is laid out as seen in the first image, which shows the inside of the cover after it has been removed.
 - As seen from the outside of the phone, you'll be slicing through the adhesive in the highlighted areas.
 - The adhesive is the thinnest on the right side of the phone, just below the Bixby button.

Step 3 — Secure a suction cup



- Secure a suction cup to the back cover, as close to the heated edge as possible, just under the Bixby button where the adhesive is thinnest.
- ⓘ The suction cup will not make a good seal on the curved portion of the glass, so avoid putting it on the very edge.
- ⓘ If the phone's back cover is cracked, the suction cup may not stick. [Try lifting it with strong tape](#), or superglue the suction cup in place and allow it to cure so you can proceed.

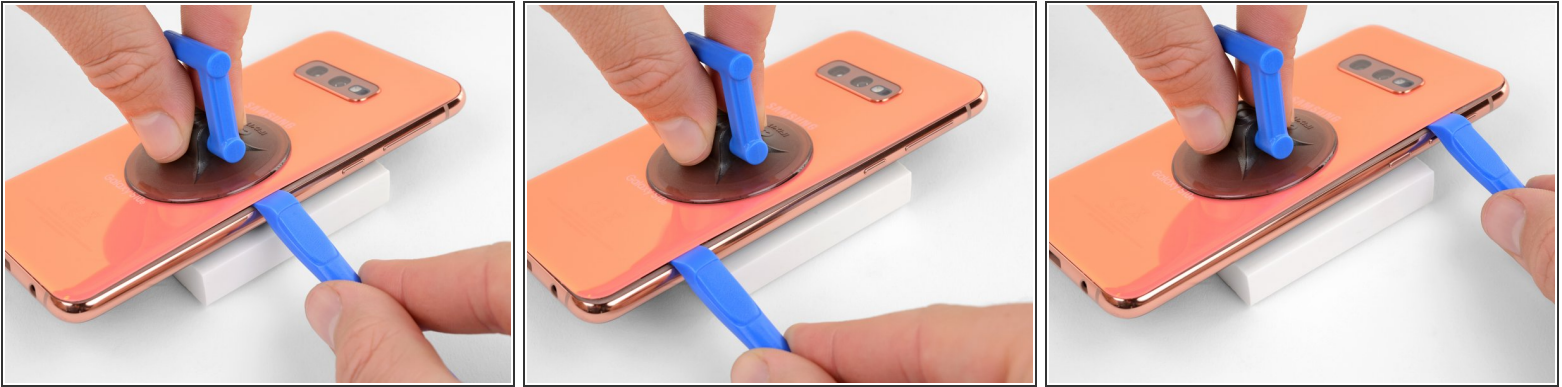
Step 4 — Create an opening gap



- Prop up the heated edge of the phone on something that is about 0.5 inches (13 mm) thick. This will angle the phone so that the opening tool is easier to insert.
- Lift the back cover's right edge with your suction cup, opening a slight gap between the back cover and the frame.
 - This may require a significant amount of force. If you have trouble, apply more heat to further soften the adhesive, and try again. The adhesive cools very fast, so you may need to heat it repeatedly.
 - ⓘ If you're using an iOpener, follow the heating [instructions](#) to avoid overheating it, or the gel pack may burst.
- Press the edge of an opening tool into the gap.

⚠ The rear glass can break if you use too much force or attempt to pry with metal tools.

Step 5



- Slide the opening tool along the right edge of the phone to slice through the adhesive securing the back cover.

Step 6



- Insert an opening pick into the edge next to the opening tool. Leave the pick here to prevent the separated glue from re-adhering.

Step 7



- Apply a heated iOpener to the top edge of the phone for two minutes.

Step 8



- Insert an opening pick near the top right corner of the phone and slide it around the corner and across the top edge of the phone.
 - ❗ The glued area is [larger here](#), so you'll need to insert your pick farther into the phone to separate it.
- Leave the opening pick in place to prevent the adhesive from re-adhering.

Step 9



- Apply a heated iOpener to the left edge of the phone for two minutes.

Step 10



- Insert a new opening pick near the top left corner and slide it along the left edge of the phone.
- Again, leave the opening pick in place in the left edge of the phone to prevent the adhesive from resealing.

Step 11



- Apply a heated iOpener to the bottom edge of the phone for two minutes.

Step 12



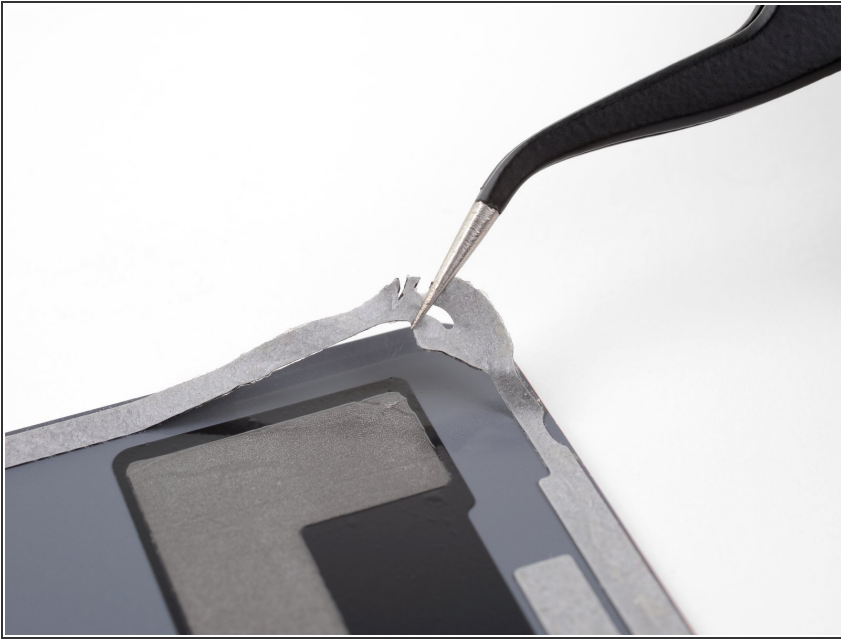
- Insert an opening pick near a bottom corner of the phone, and slide it along the bottom edge of the phone to separate the adhesive there.
- ⓘ The glued area is larger here, so you'll need to insert your pick farther into the phone to fully separate it.

Step 13



- Use the opening picks to very carefully pry up the back cover.
 - If you encounter any resistance, stop prying and use an opening pick to cut any remaining adhesive.
- Remove the back cover.

Step 14



- ★ [Follow this guide](#) to reinstall the back cover and replace the adhesive.
- i Be sure to turn on your phone and test your repair before installing new adhesive and resealing the phone.
- i If desired, you may reinstall the back cover without replacing the adhesive. Remove any large chunks of adhesive that might prevent the back cover from sitting down flush. After installation, heat the back cover and apply pressure to secure it. **It won't be waterproof**, but the leftover adhesive is usually more than strong enough to hold.

To reassemble your device, follow these instructions in reverse order.

Take your e-waste to an [R2 or e-Stewards certified recycler](#).

After you've completed the repair, [follow this guide](#) to test your repair.

Repair didn't go as planned? Check out our [Answers community](#) for troubleshooting help.