



How to Replace the Bail Spring in a Spinning Reel

This guide will help you replace a bail spring in your spinning reel and get you back out there fishing!

Written By: Zach Lyles



INTRODUCTION

Basic knowledge of a spinning reel is needed for this fix, due to this guide being a replacement of the reel's bail spring. Even though we use a specific brand of spinning reel (Mitchell 300), the same methods apply to all spinning reels with a bail arm. Also, in order to perform this replacement, a new bail spring with the correct dimensions is required in order for the reel to act properly. With the correct equipment and basic knowledge of the reel, this guide should be a breeze to follow and should help several people with fixing their spinning reels!



TOOLS:

- [Phillips #1 Screwdriver](#) (1)



PARTS:

- [Spinning Reel Bail Spring](#) (1)

Step 1 — Spinning Reel Bail Spring Replacement for south bend 840



- Remove the screw that holds the base of the bail arm to the reel with a Phillips #1 screwdriver.

Step 2



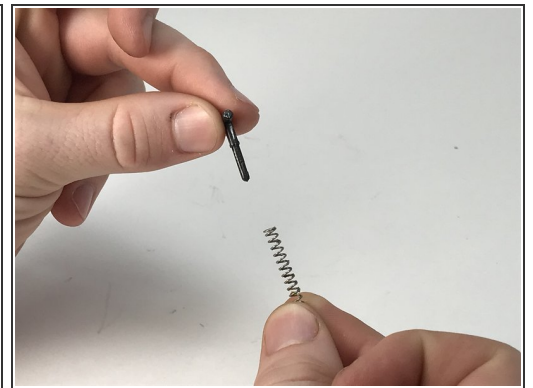
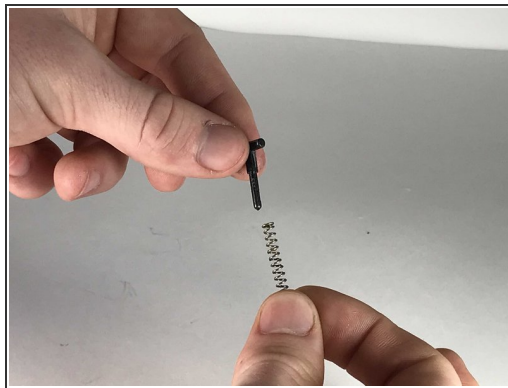
- Slowly pull the base of the bail arm away from the reel in a twisting motion to separate the two parts.

Step 3



- Remove the worn out bail spring by pushing down on the spring, then pulling outward away from the reel.

Step 4



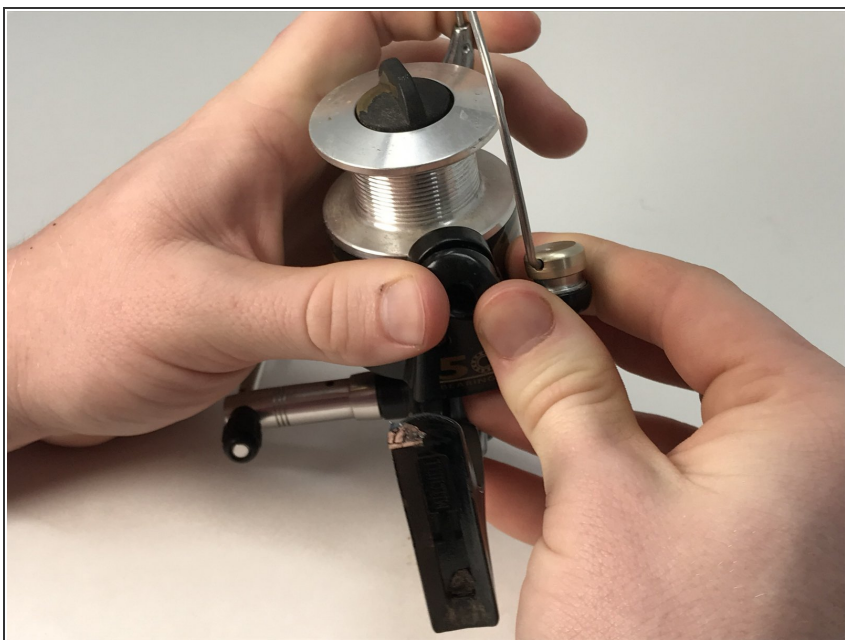
- Replace the worn out bail spring by separating the pin from the spring. Then place the original pin inside of the new spring.

Step 5



- Place the new bail spring and pin back in the spring slot. Lightly push down on the spring to allow it to sit in its original position.

Step 6



- Line the bail back up with the reel, ensuring all holes align with each other. Lightly squeeze the bail and reel together to allow the two pieces to snap back together.

Step 7



- Insert the same screw used in Step 1 back into the hole and firmly screw it in.

By replacing the spring, the entire open bail reel is saved from turning into unnecessary garbage that is harmful to the environment. Happy Fishing!