



Asus ROG G751JL-DS71 Central Processing Unit Replacement

This guide will teach you how to replace the...

Written By: Justin Keathley



INTRODUCTION

This guide will teach you how to replace the Central Processing Unit in your device. This is important for the usability of the device.

TOOLS:

Spudger (1)

Metal Spudger (1)

Phillips #0 Screwdriver (1)

Phillips #1 Screwdriver (1)

Step 1 — Central Processing Unit



- Lift the rubber cover found on the bottom of the laptop.
- Remove the 5.2 mm screw with a Phillips 1 Screwdriver

Step 2



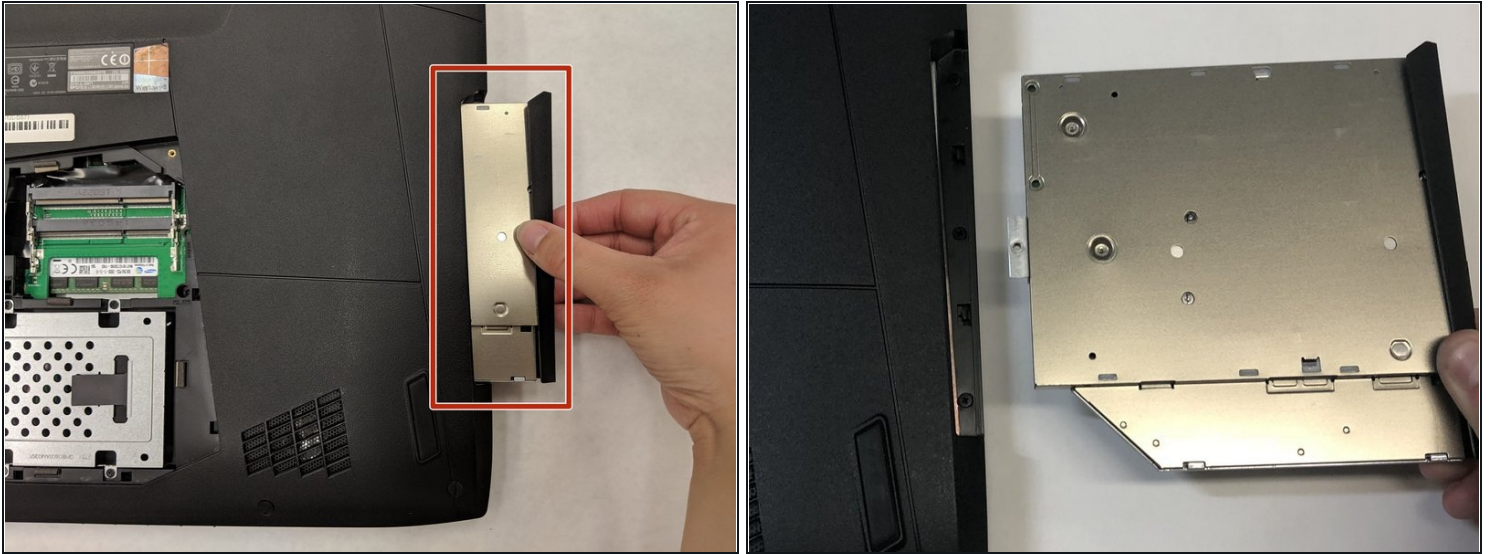
- Use the standard spudger to remove the back center panel.

Step 3



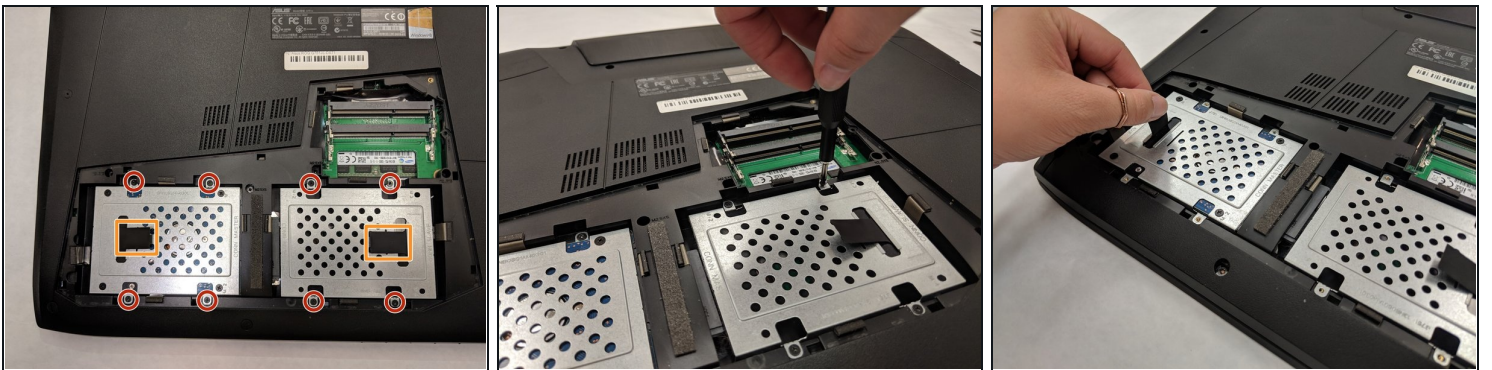
- Use a Phillips 1 Screwdriver to remove the 5 mm screw that is located underneath the back panel.

Step 4



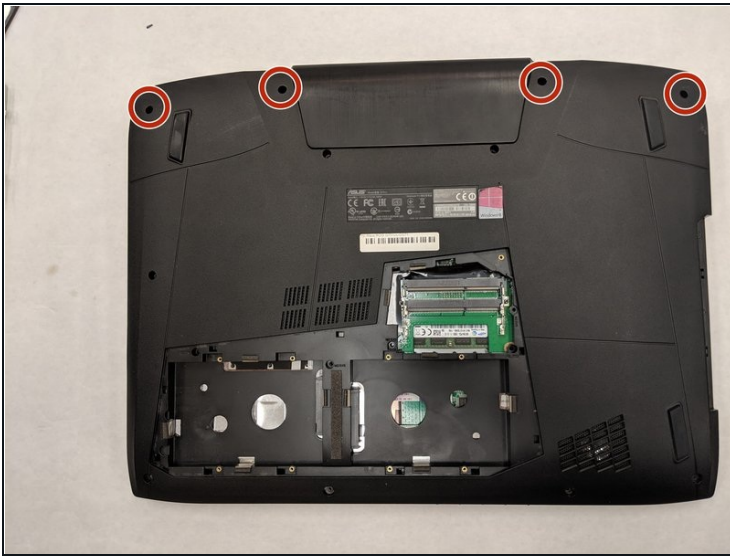
- Pull out the optical drive found on the side of the laptop.

Step 5



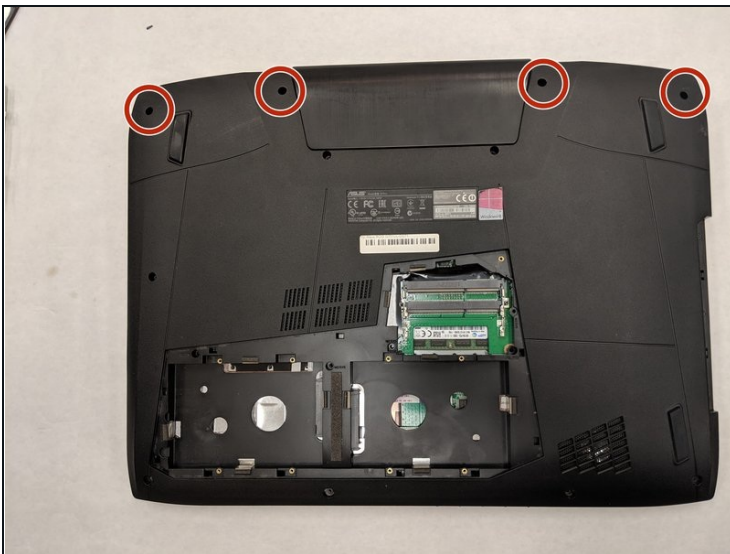
- Remove the screws holding the hard drives in place using a phillips #1 screwdriver.
- Using the small flaps, remove the hard drives by hand.

Step 6



- Use a pair of [tweezers](#) to remove the top four rubber stoppers found on the bottom of the laptop.

Step 7



- Use a Phillips 1 Screwdriver to remove the top four 8.5 mm screws.

Step 8



- Use a metal spudger to carefully pry the top back panel off.

⚠ While removing the top back panel, be careful not to break the four pin connector located underneath.

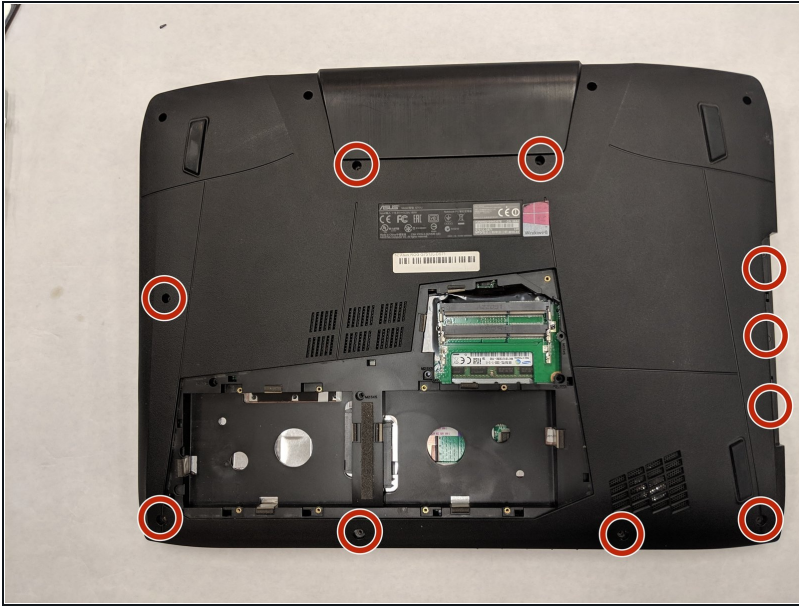
- Disconnect the four-pin connector and remove the top back panel from the computer.

Step 9



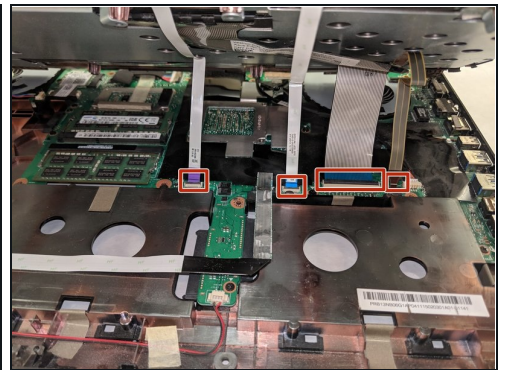
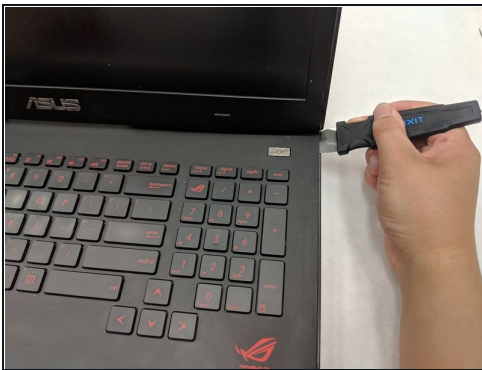
- Use a Phillips 1 Screwdriver to remove the four 6.8 mm screws underneath the back panel.

Step 10



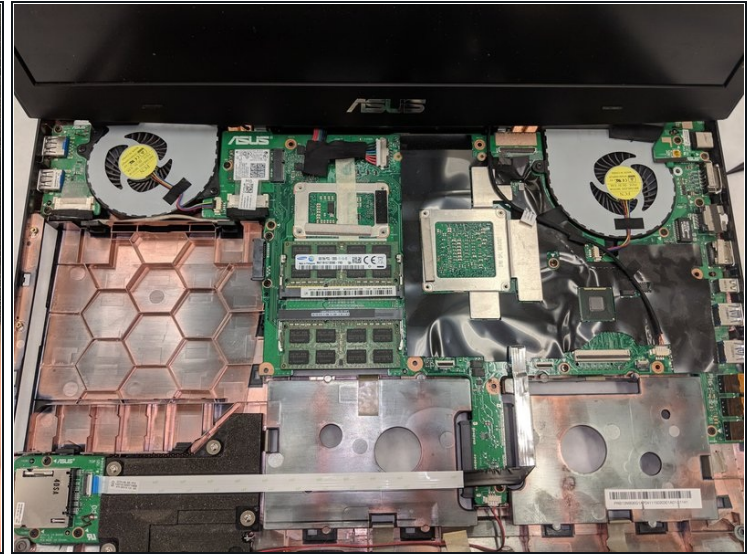
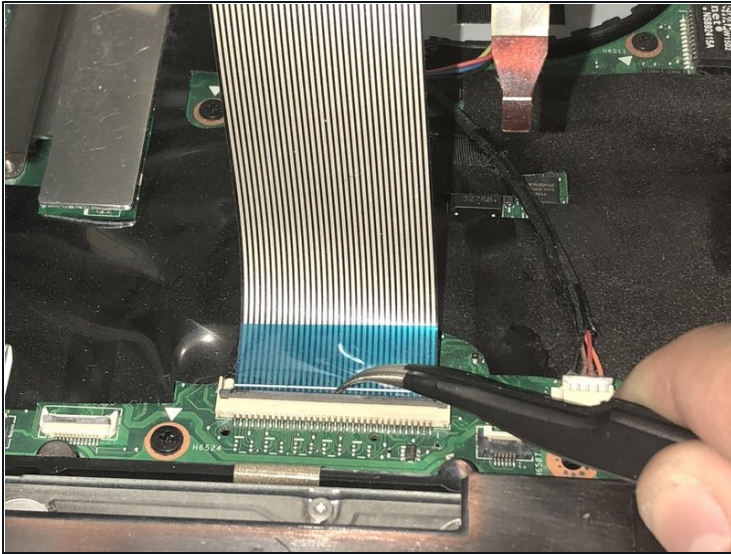
- Use a Phillips 1 Screwdriver to remove the ten 5.2 mm screws holding the main panel in place.

Step 11



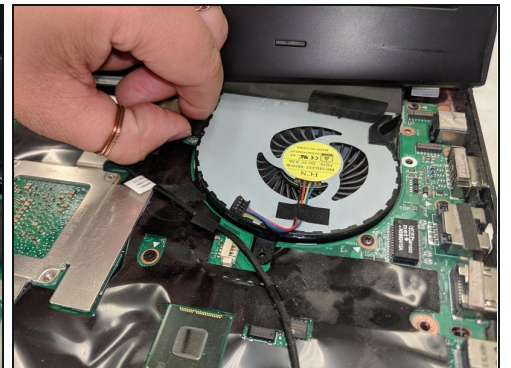
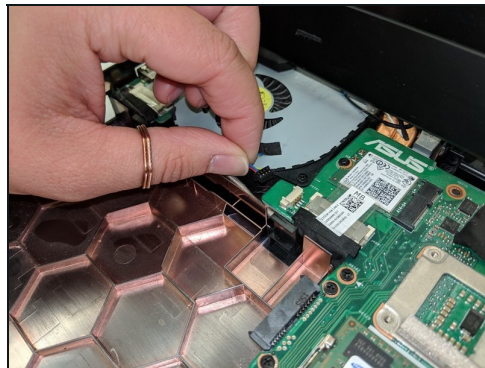
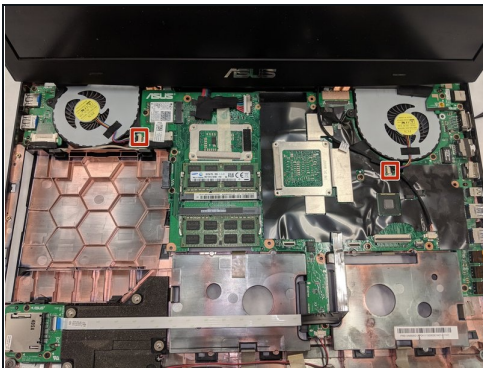
- Use a metal opening tool to pry the keyboard from the base of the laptop.
- ⚠ Lift the keyboard carefully so as to not tear or break the four ribbon connectors underneath the keyboard.

Step 12



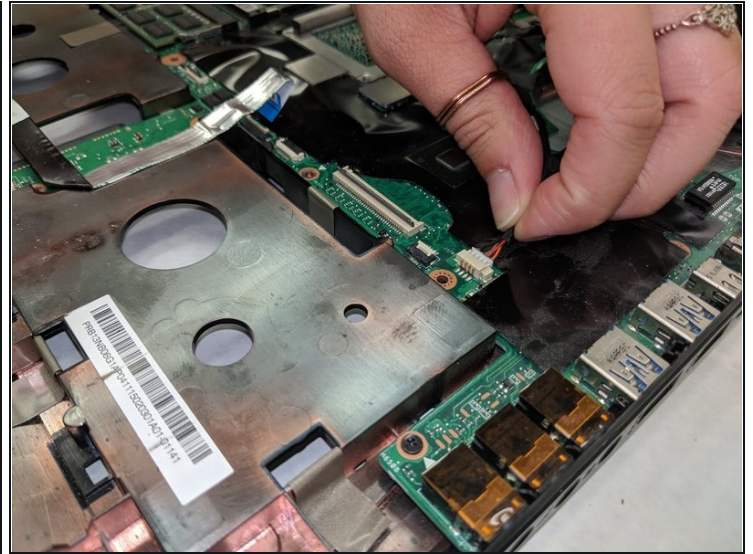
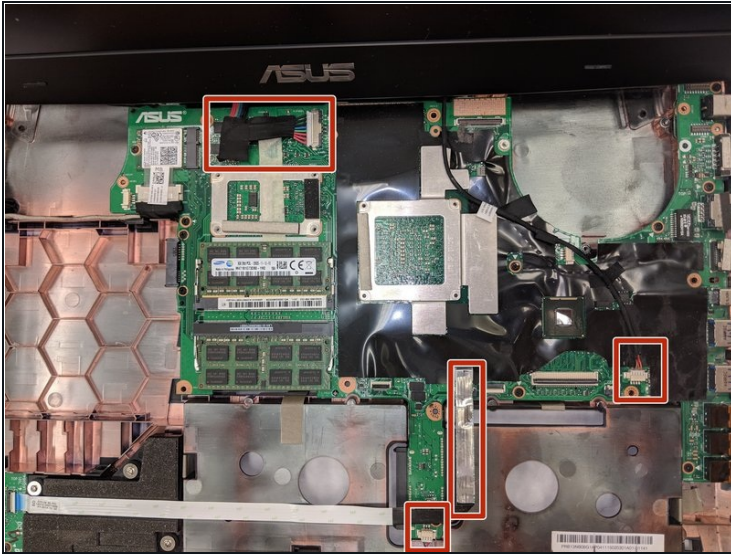
- Use a pair of tweezers to undo each of the four ribbon connectors.
- The keyboard is now completely disconnected from the laptop and you can remove it.

Step 13



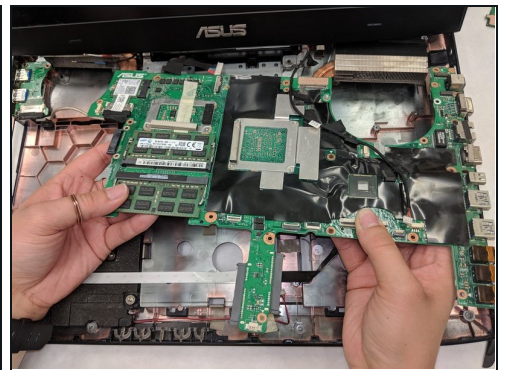
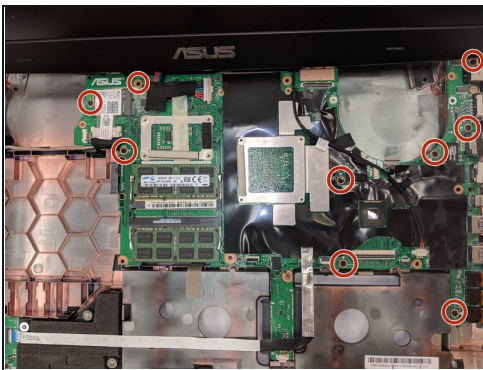
- Remove the ribbon that connect the fans.

Step 14



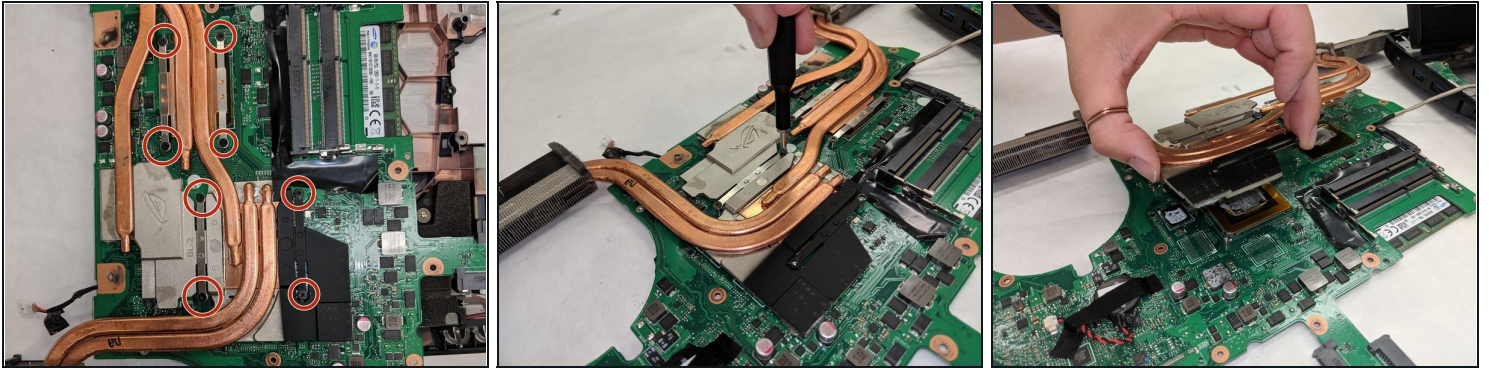
- Remove the ribbon cables connected to the motherboard.

Step 15



- Remove the screws holding in the motherboard using a Phillips 0 screwdriver.
- ⚠ Remove the motherboard by hand. Be careful as the radiators for the fans are connected underneath the screen.

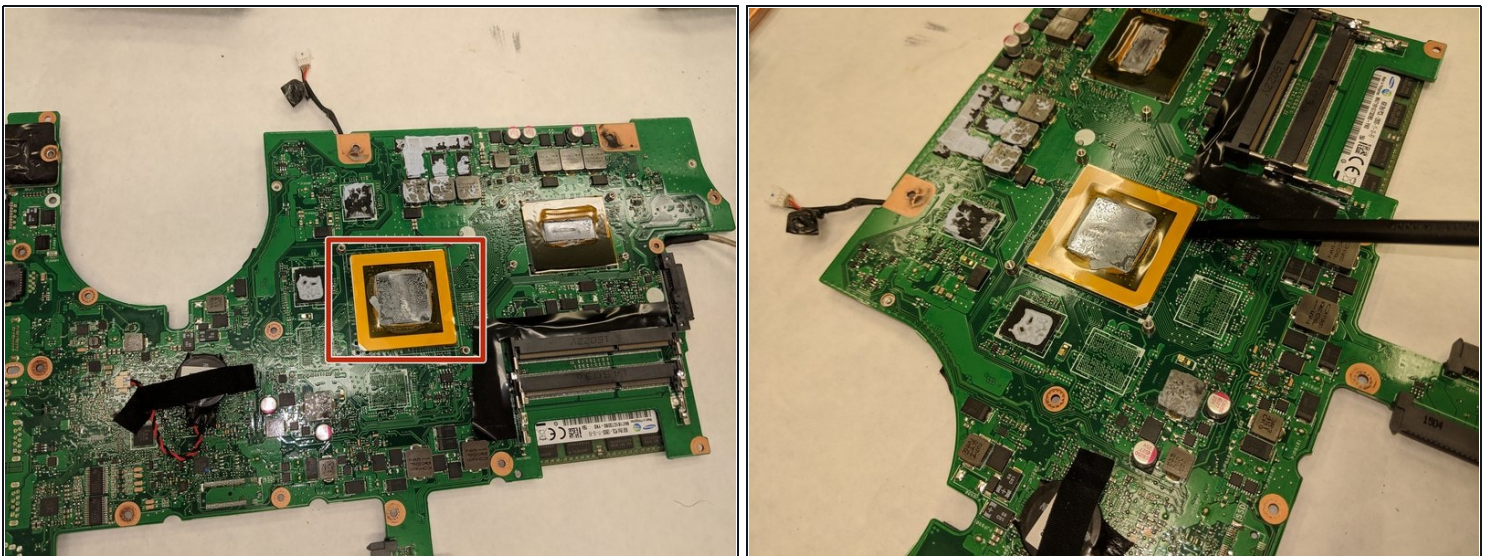
Step 16



- Remove the screws holding in the motherboard using a Phillips 0 screwdriver.

⚠ Remove the heat sink by hand. Be careful not to get thermal paste on your hand

Step 17



- The CPU can then be removed with a regular spudger.
- The CPU is now completely disconnected from the laptop and you can remove it.

To reassemble your device, follow these instructions in reverse order.