

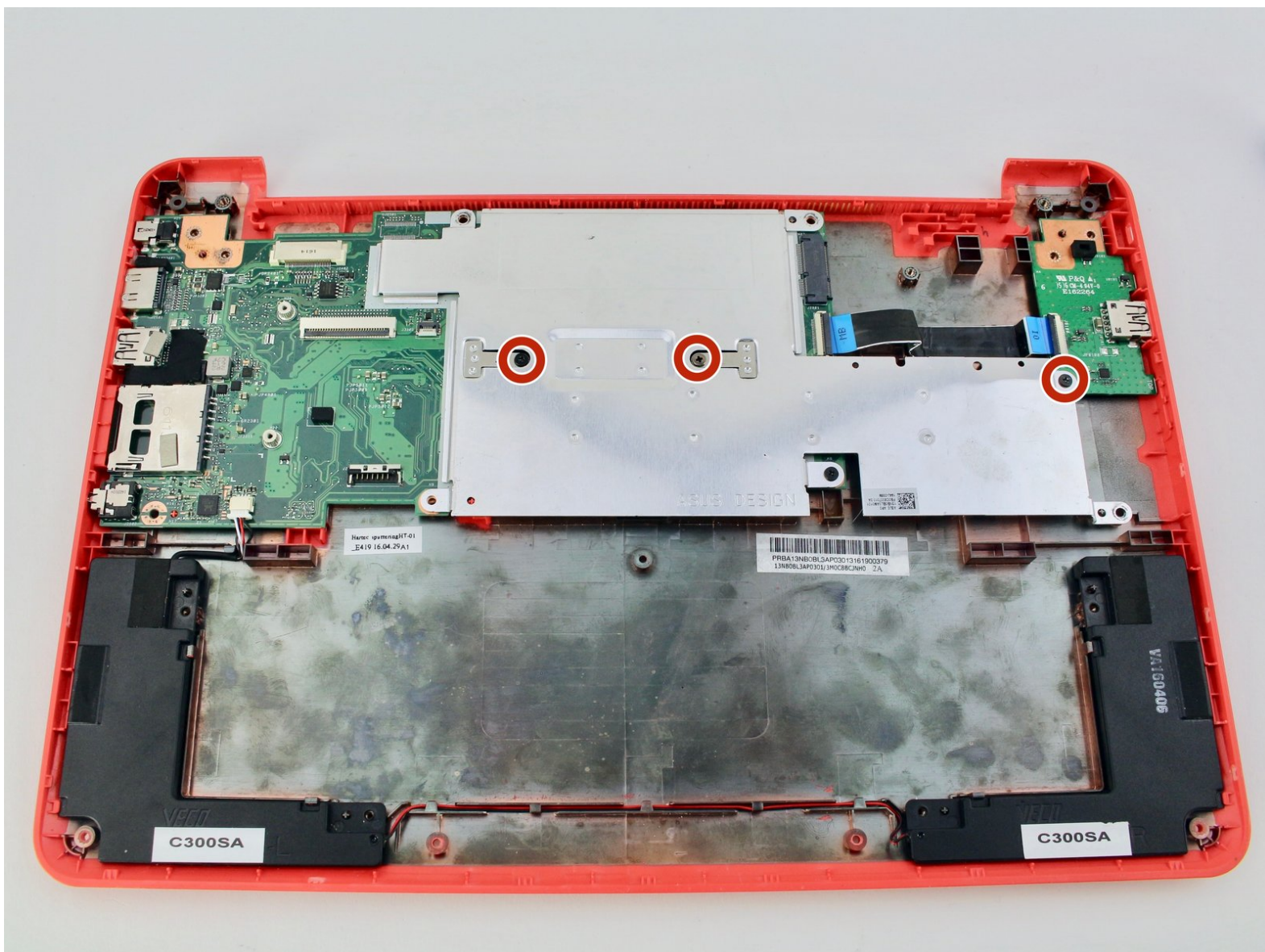


Asus Chromebook C300SA-DS02

Daughterboard Replacement

This guide will show the procedure to replace a faulty daughterboard in an Asus Chromebook C300SA-DS02. This should solve problems with the right side USB.

Written By: Austin Blakely



INTRODUCTION

This guide will show the procedure to replace a faulty daughterboard in an Asus Chromebook C300SA-DS02. This should solve problems with the right side USB port. Due to design choices, the display hinges sit atop the motherboard and daughterboards. So while it is not necessary to disconnect the cable connections to the display, you should exercise



TOOLS:

- [iFixit Opening Tools](#) (1)
 - [Phillips #0 Screwdriver](#) (1)
-

Step 1 — Keyboard



i Power the laptop off and make sure the charger is unplugged before starting.

- Remove the eight 8.0mm Phillips #0 screws on the bottom of the laptop.
- Remove the three 6.0mm Phillips #0 screws.

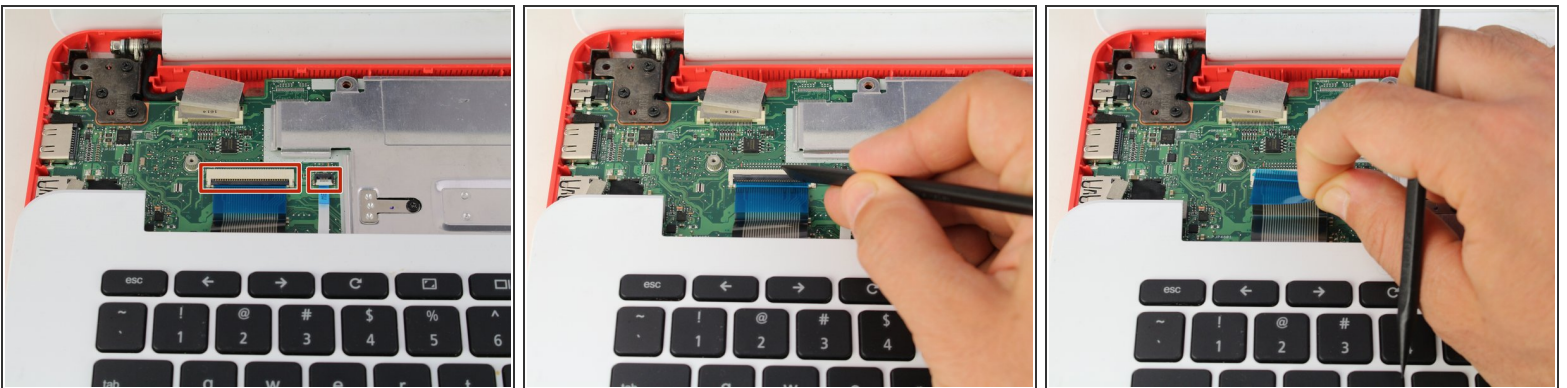
Step 2



- Open the laptop.
- Using an iFixit opening tool, pry along the edges of the keyboard.
- Lift the keyboard and slide it gently towards you.

⚠ Do not completely remove the keyboard. It is still connected to the back panel by a pair of ribbon cables.

Step 3



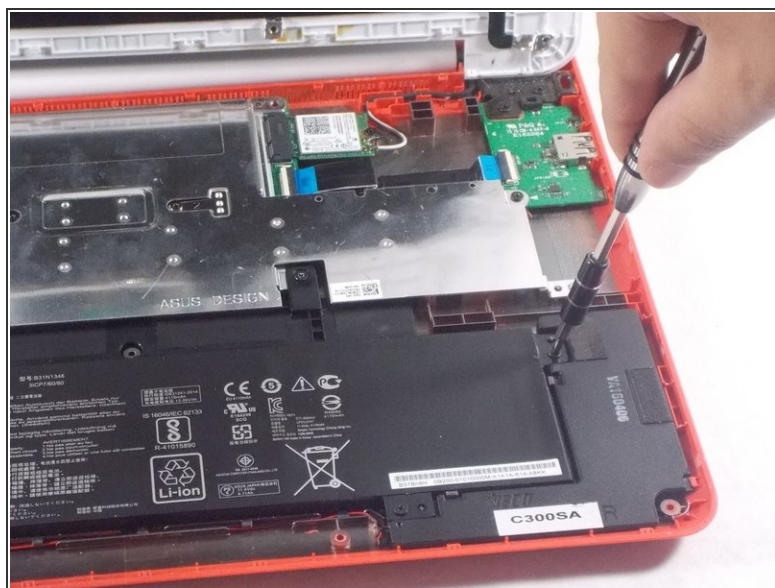
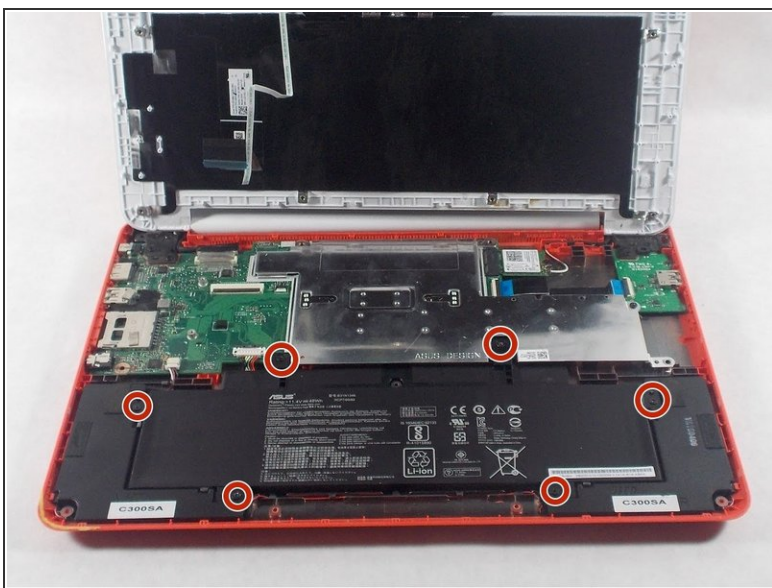
- Disconnect the two ZIF connectors by prying up the locking bar with a spudger and removing the ribbon cable.

Step 4



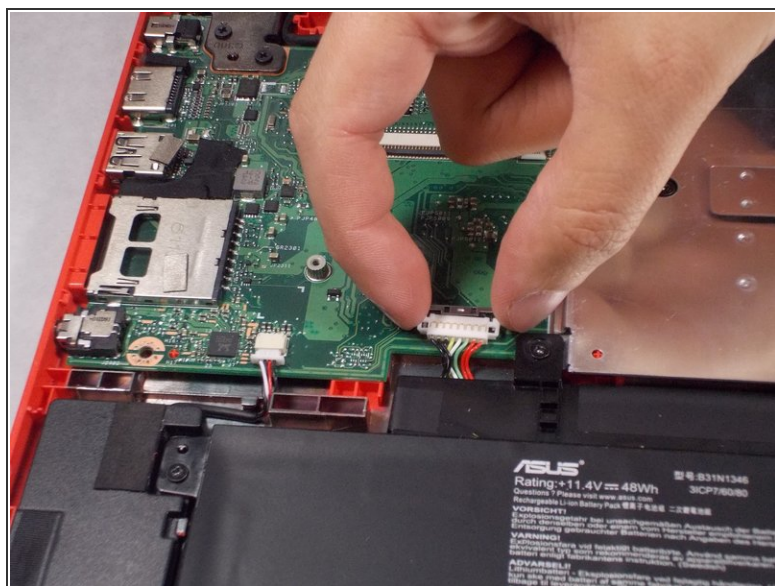
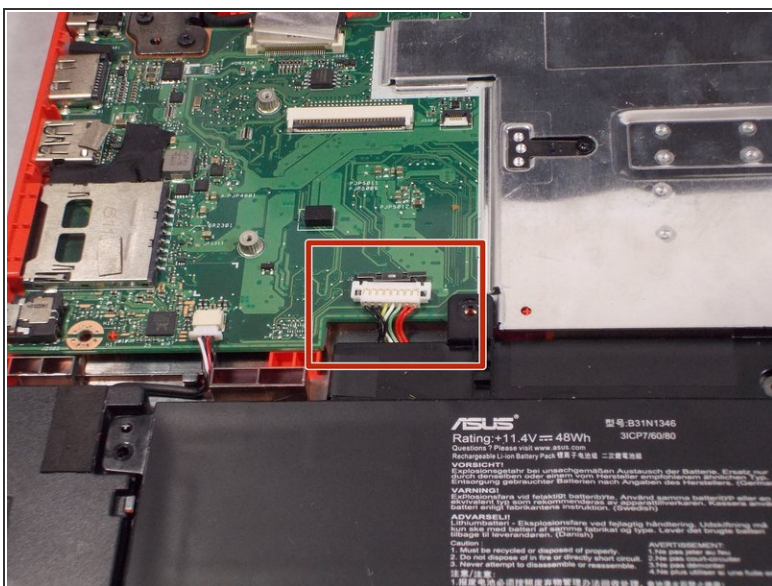
- Remove the keyboard from the laptop.

Step 5 — Battery



- Remove the six 5.6mm Phillips #0 screws around the battery.

Step 6



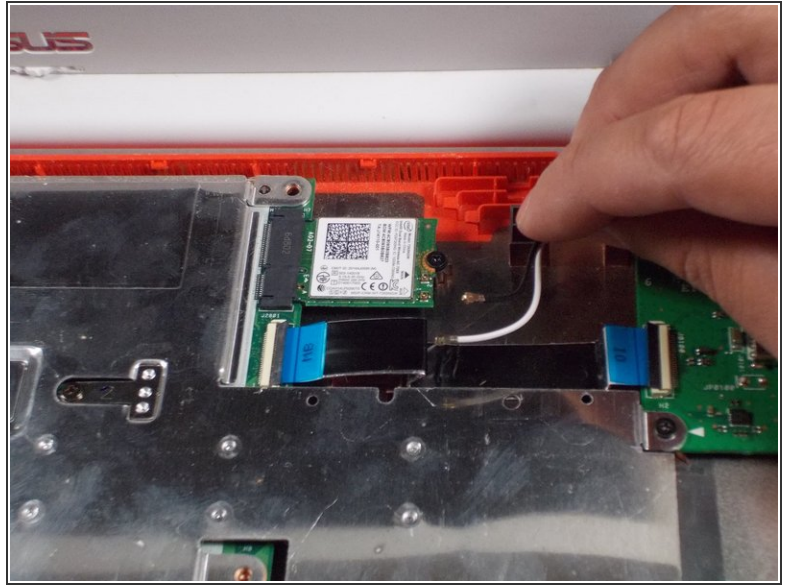
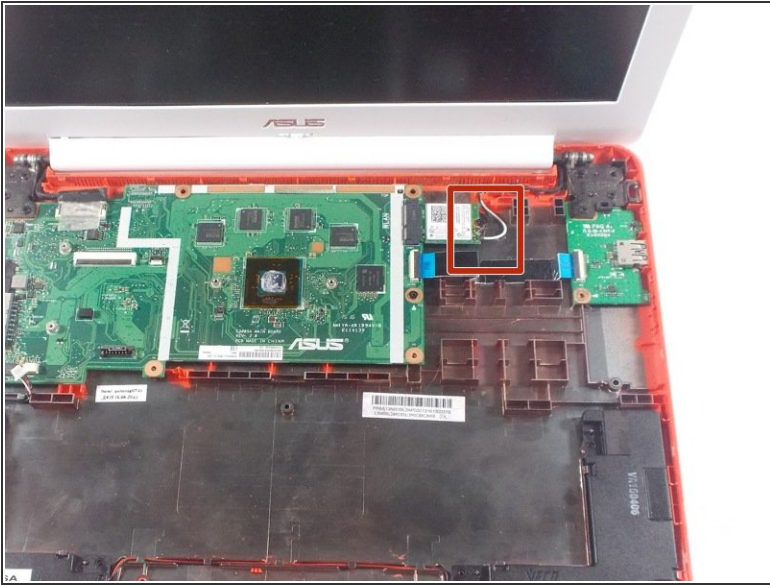
- Using your thumb and index finger, pinch the multi-color cable and disconnect it from the motherboard.

Step 7



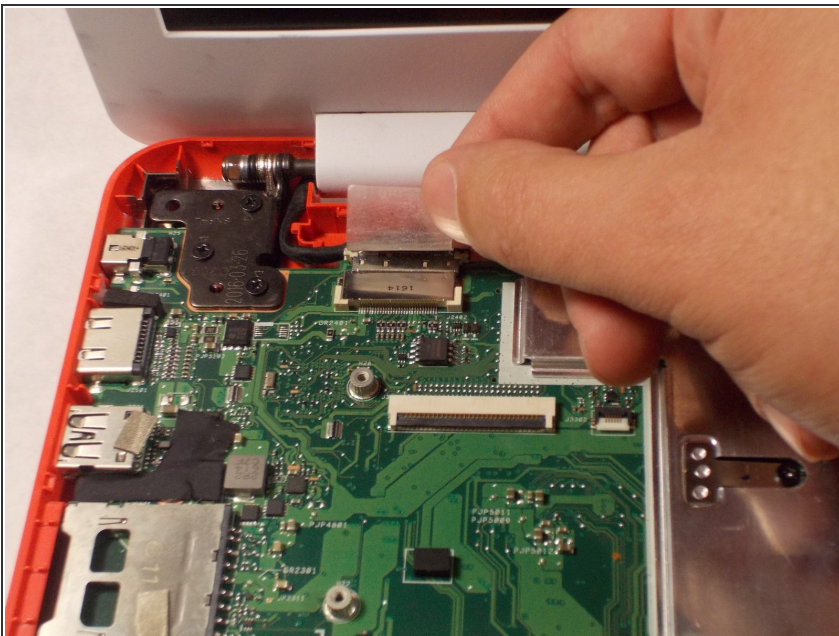
- Lift the battery out of the laptop.

Step 8 — Display Assembly



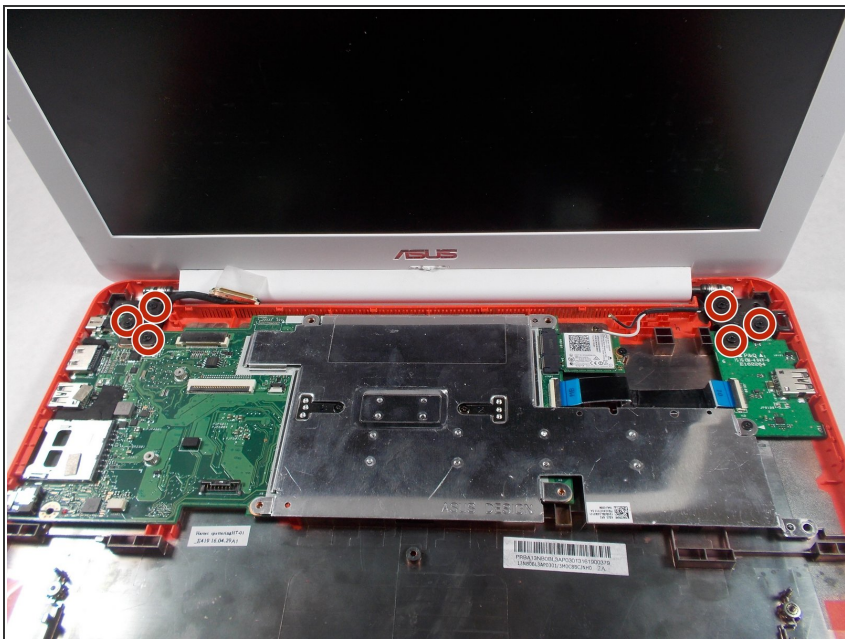
- Unplug the black and white cable from the motherboard.
- ⓘ These two wires connect to the antenna within the display assembly. The white cable is longer and connects to the bottom import.

Step 9



- Peel back the tape covering the display cable.
- Ease the cable towards the screen and out from the connector.

Step 10



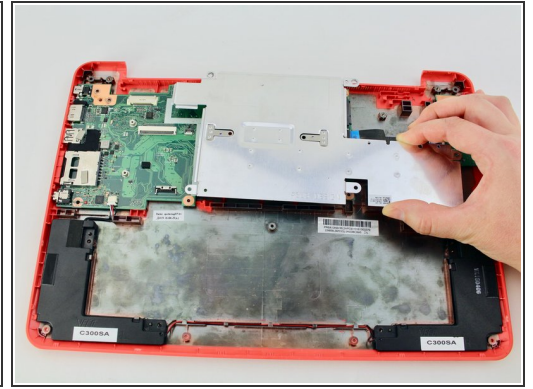
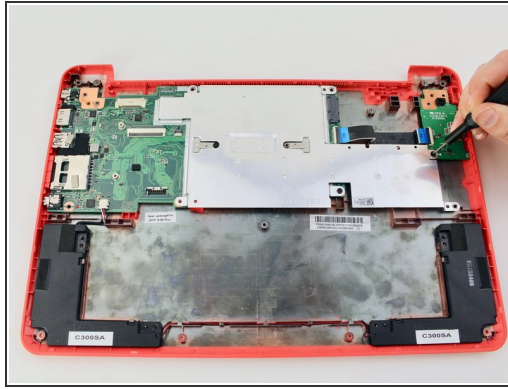
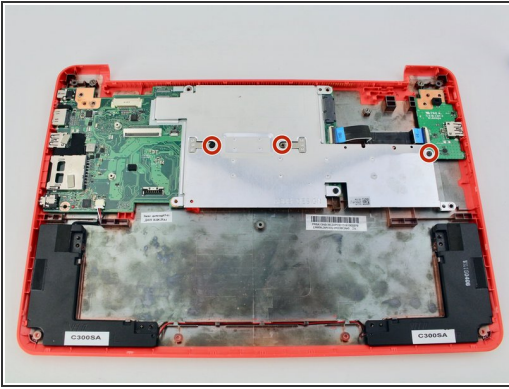
- Use a Phillips #0 driver to remove the six 5mm screws on the top right and left display hinges.

Step 11



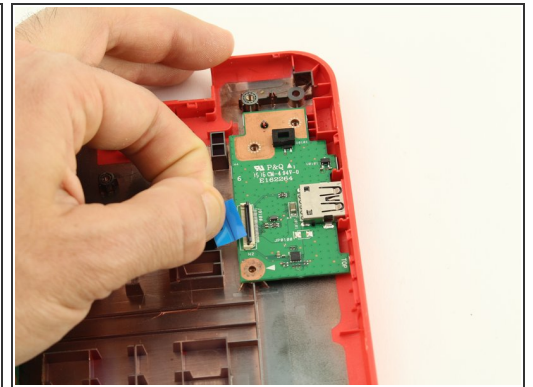
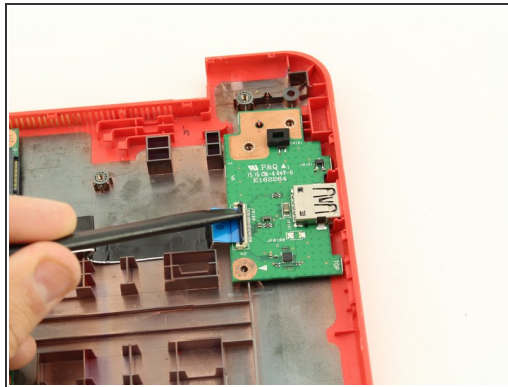
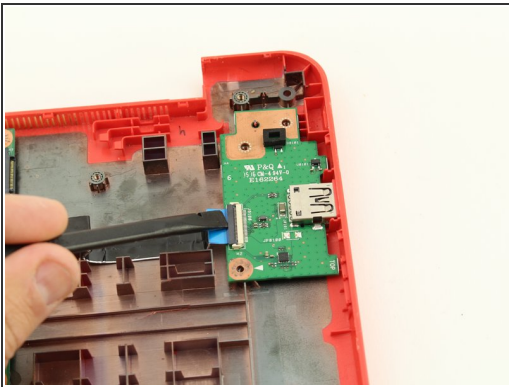
- Gently lift the display assembly up and away from the laptop.

Step 12 — Daughterboard



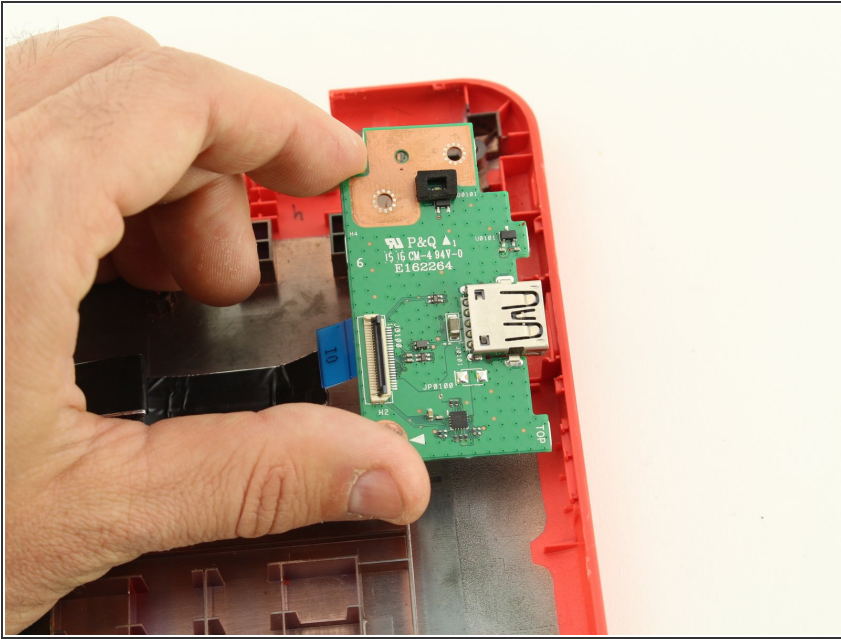
- Using your Phillips #0 screwdriver, unscrew three, 3.6mm screws from the silver heat sink.
- Remove the heat sink from the motherboard.

Step 13



- Use a spudger to flip up the locking tab on the ZIF connector of the daughterboard.
- Slide the ribbon cable from the connector.

Step 14



- Remove the daughterboard by lifting it from the bottom case.

To reassemble your device, follow these instructions in reverse order.