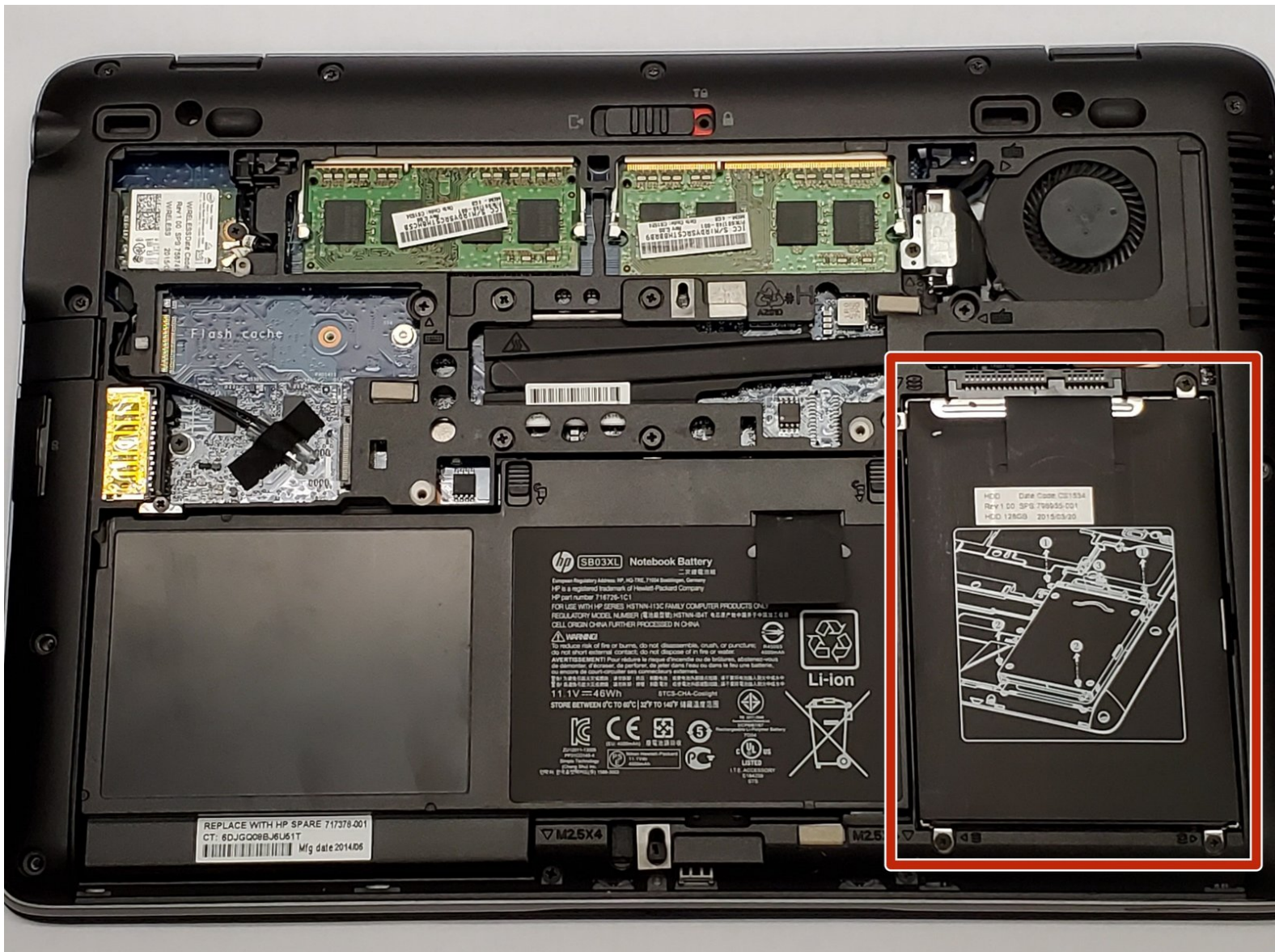




# HP Elitebook 820 G2 Hard Disk Drive Replacement

The hard drive is the device that holds all of...

Written By: Mackenzie Marcinek



## INTRODUCTION

The hard drive is the device that holds all of your saved data, such as your pictures, documents, etc. When your computer no longer boots up, the hard drive could be to blame. If the hard drive is the problem your having, this guide is will show you how to replace it.



### TOOLS:

- [Phillips #0 Screwdriver](#) (1)

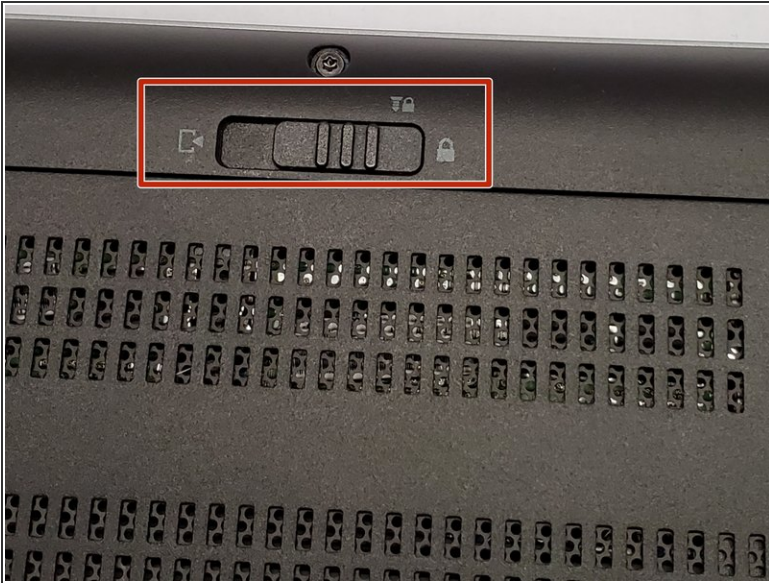


### PARTS:

- [1 TB SSD](#) (1)
- [250 GB SSD](#) (1)
- [Crucial MX500 500 GB SSD](#) (1)
- [2 TB SSD](#) (1)



## Step 1 — Back Panel



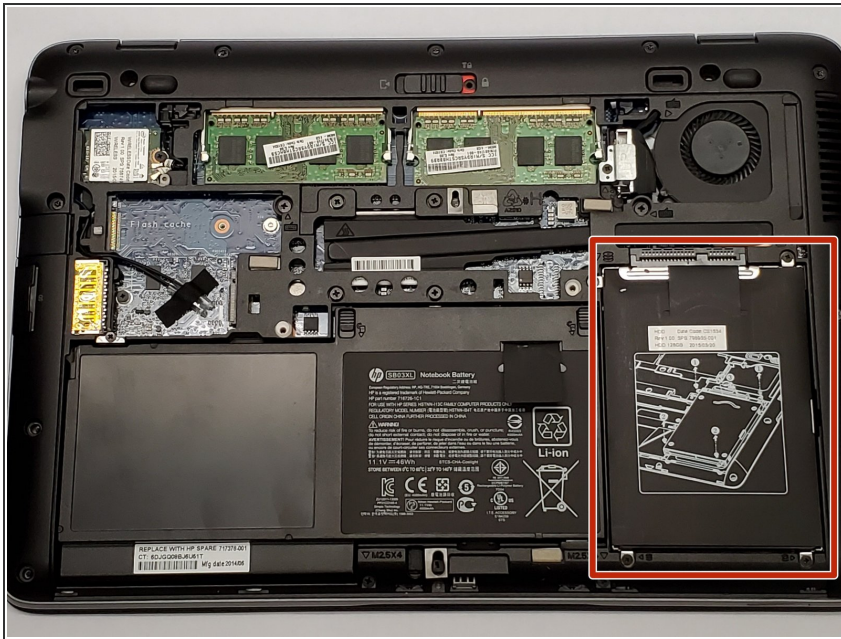
- Slide the lever firmly to the left on the back panel.
- i** Once the back panel is unlocked, there should be red showing to the right of the lever.

## Step 2



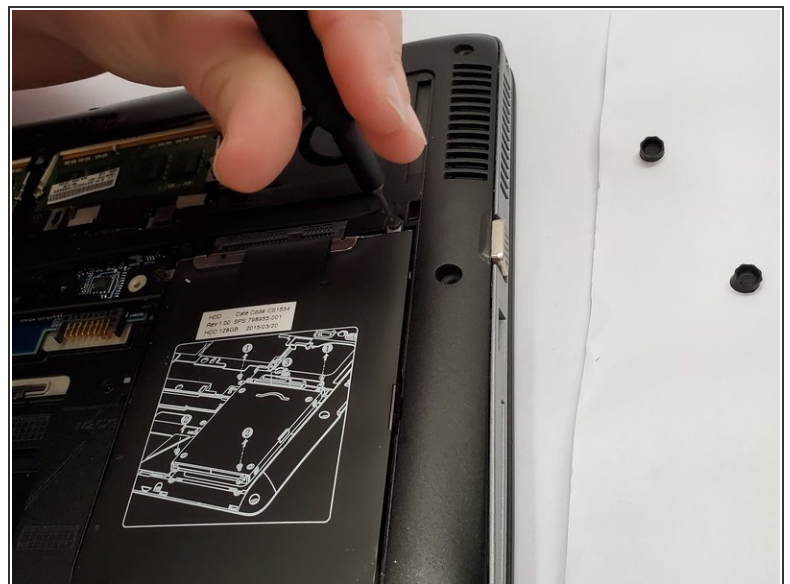
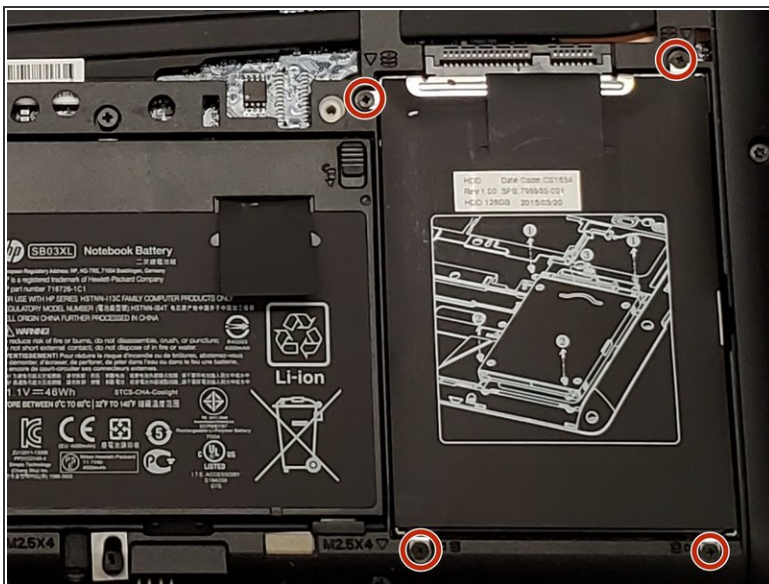
- Slide the back panel towards you.
- Lift the back panel to remove it.

## Step 3 — Hard Disk Drive



- The hard drive is found on the bottom right under the back panel.

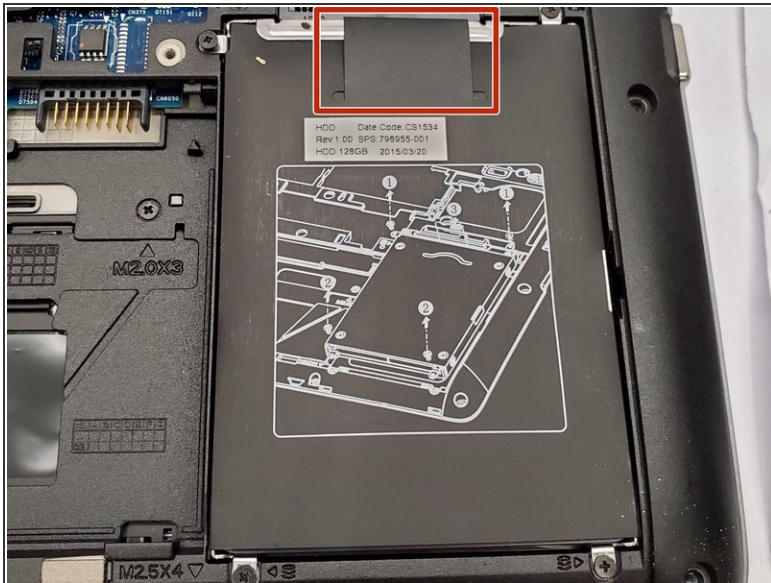
## Step 4



- Use a Phillips #0 screwdriver to unscrew the four 2 mm screws that secure the hard drive.



## Step 5



- Pull the tab at the top of the hard drive.
- Lift up and remove the hard drive.

To reassemble your device, follow these instructions in reverse order.