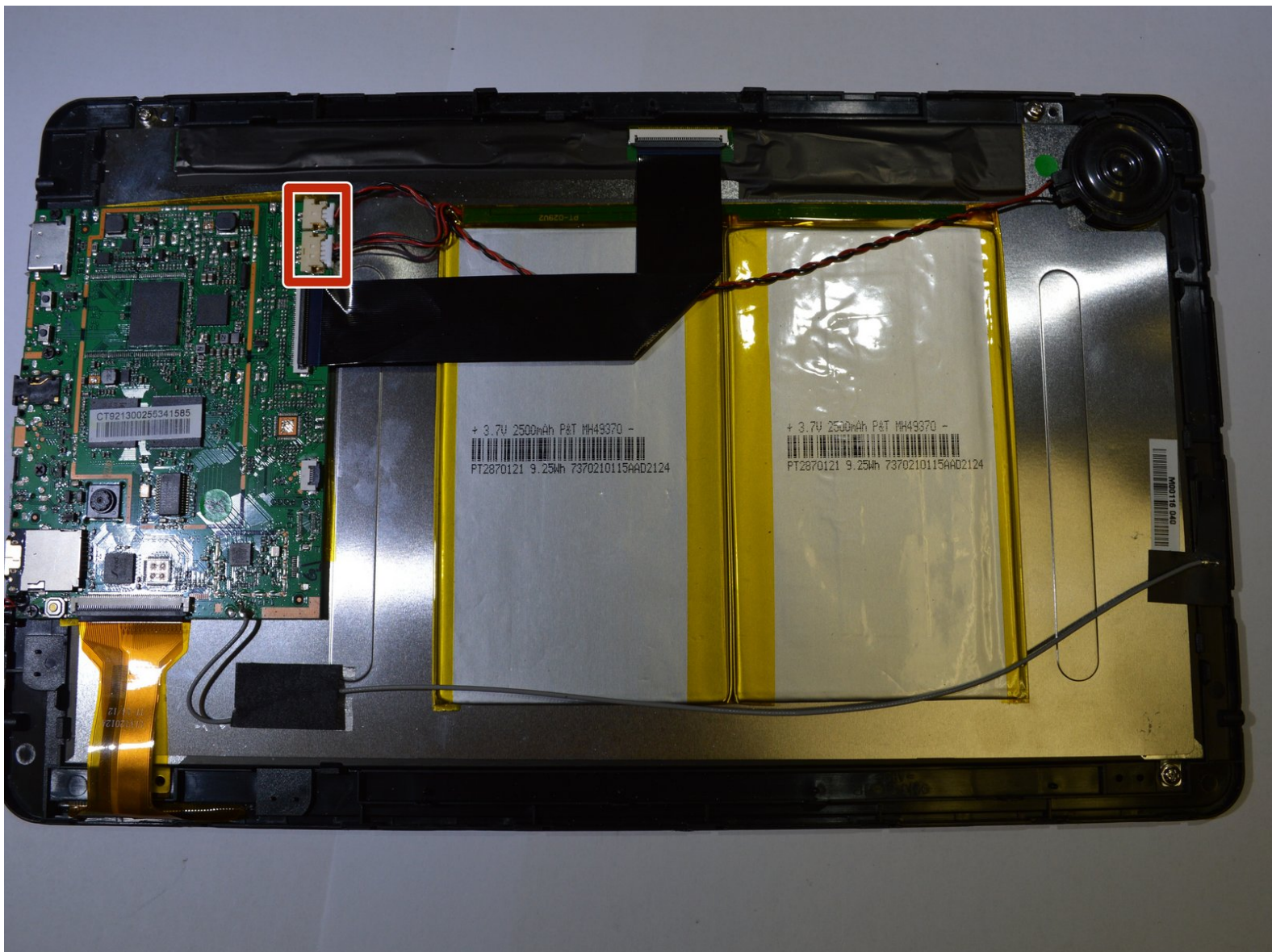




RCA Maven Pro 11 Battery Replacement

This guide will assist you in replacing the battery for the RCA Maven Pro 11

Written By: Brady Alexander Cristancho



INTRODUCTION

The battery is responsible for powering your RCA Maven Pro 11. The battery is glued onto the sub frame inside of the tablet. It is the white and yellow piece.



TOOLS:

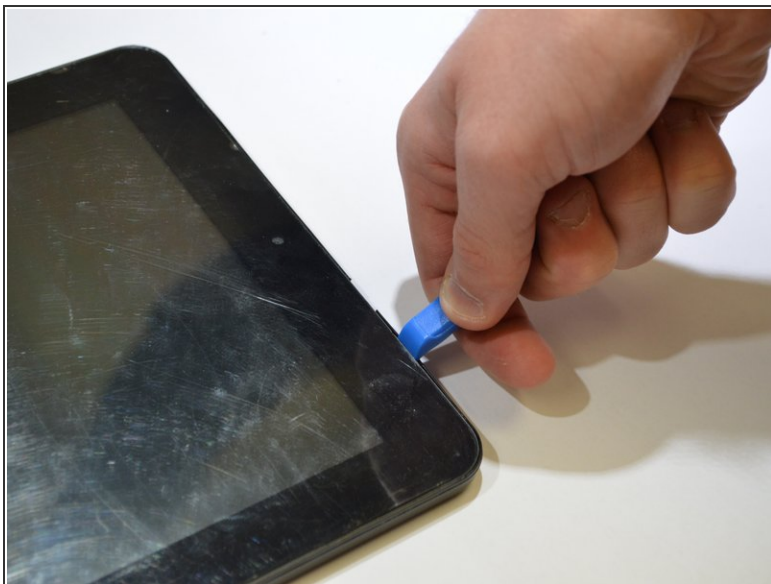
- [Phillips #0 Screwdriver](#) (1)
 - [iFixit Opening Tools](#) (1)
-

Step 1 — Cover



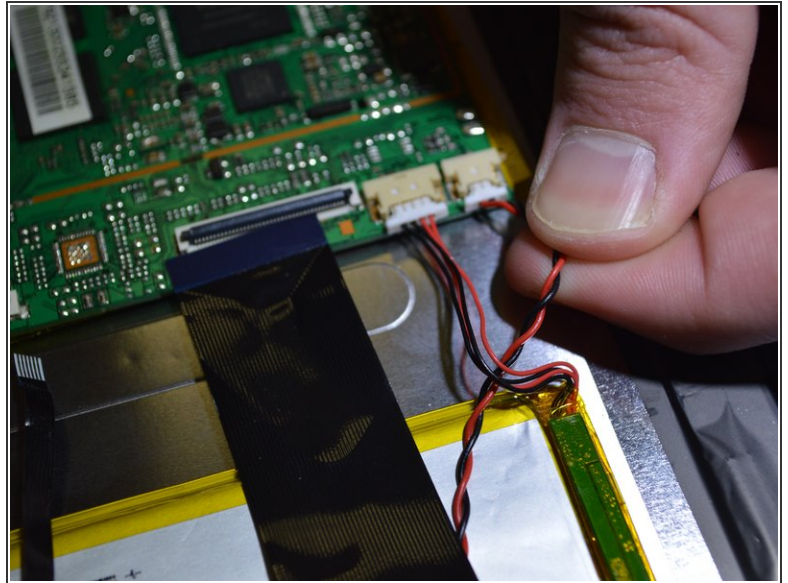
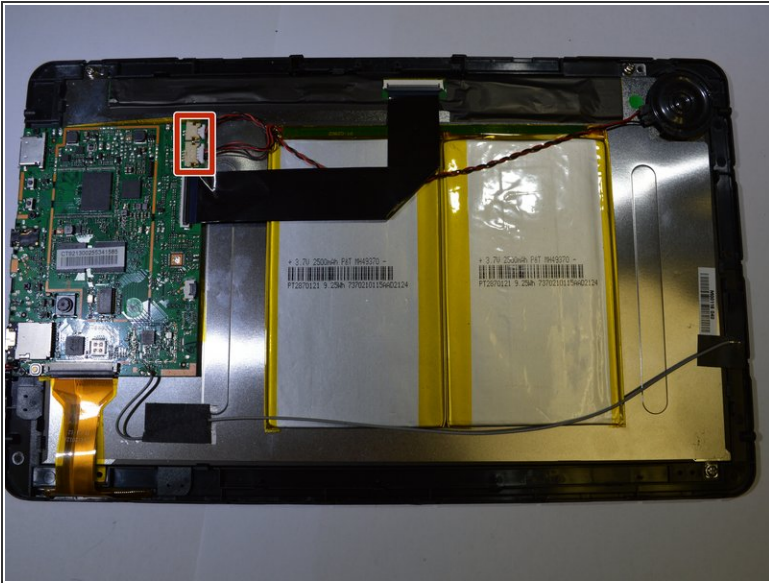
- Remove all the 8 mm Phillips head screws on the side and back of the device.

Step 2



- Pry off the cover by sticking a wedge in between the screen and the cover.
- ⚠ Be careful with the plastic because it can easily break.
- Once the cover is partly removed, use your hands to take off the rest of the cover.

Step 3 — Battery



- Pull out the pins circled in the picture.
- ⓘ These pins can be removed by hand. Just pull on them individually.

Step 4



- Use the opening tools to peel the battery off of the panel.
- ⓘ The glue is located in the corners.
- ⚠ Do not bend or puncture the battery.

To reassemble your device, follow these instructions in reverse order.

This document was generated on 2020-11-28 07:27:47 AM (MST).

