



RCA Maven Pro 11 Reset Button Replacement

Replace a broken reset button on the RCA Maven Pro 11.

Written By: Brady Alexander Cristancho



INTRODUCTION

The reset button resets the tablet in the event of a crash. For this guide you will need a Phillips screwdriver.



TOOLS:

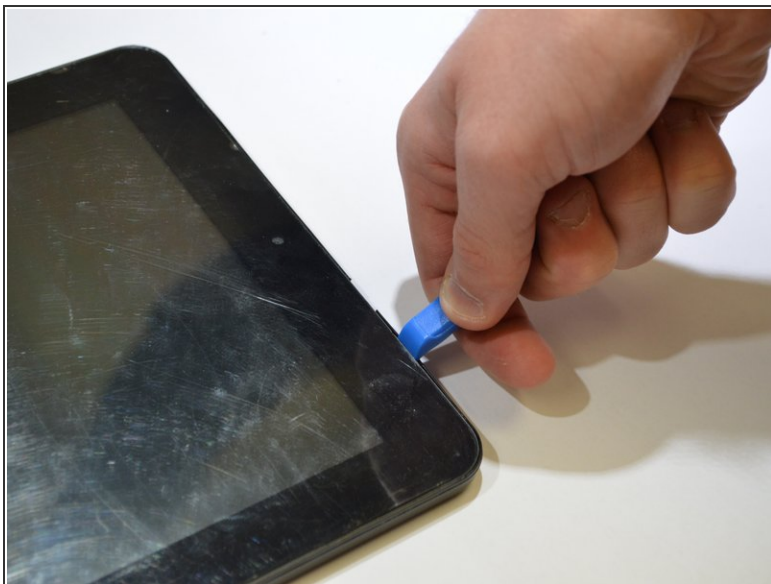
- [Phillips #0 Screwdriver](#) (1)
 - [iFixit Opening Tools](#) (1)
-

Step 1 — Cover



- Remove all the 8 mm Phillips head screws on the side and back of the device.

Step 2



- Pry off the cover by sticking a wedge in between the screen and the cover.
- ⚠ Be careful with the plastic because it can easily break.
- Once the cover is partly removed, use your hands to take off the rest of the cover.

Step 3 — Reset Button



- Locate the power button on the cover.

Step 4



- Carefully pull up on the power button. There are two pins holding it in.
- Remove the power button.

To reassemble your device, follow these instructions in reverse order.