



# JBL Clip 1 Teardown

Teardown of the Red JBL Clip 1

Written By: Timothy McEvoy



---

# INTRODUCTION

Today we will be tearing down the JBL Clip 1 and looking at its components

---

## TOOLS:

- [Jimmy](#) (1)
  - [Phillips #0 Screwdriver](#) (1)
  - [Phillips #00 Screwdriver](#) (1)
-



## Step 1 — JBL Clip 1 Teardown



- Starting with the main side of the speaker, turn it over so that the back side is visible.

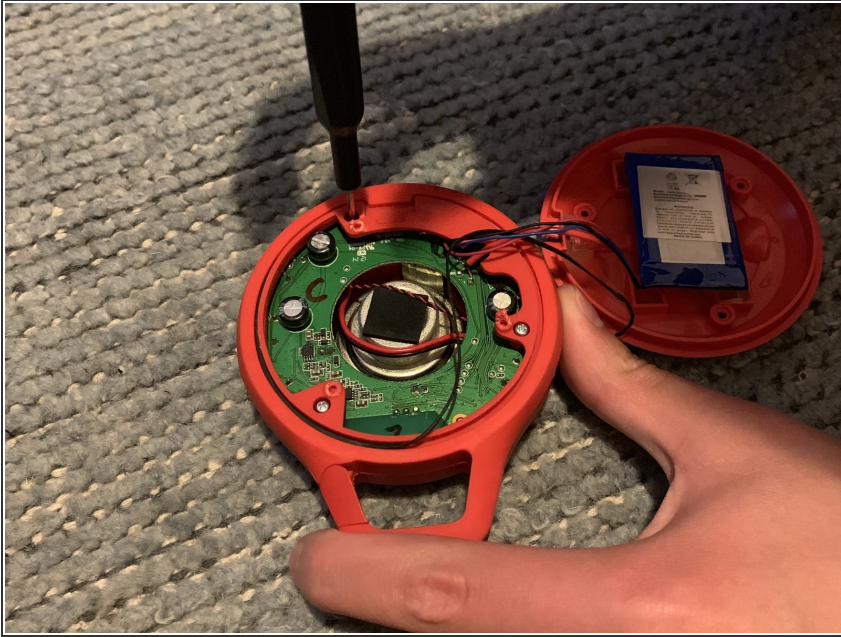
## Step 2



- Pull off the rubber ring on the underside of the speaker so that the screws are visible.
- Unscrew the small phillips screws.



### Step 3



- Firmly pull the back cover off of the device.
- Begin to unscrew the screws holding the front of the speaker in place.

### Step 4



- After unscrewing the 3 screws on the inside turn the speaker over so that the front is facing you.
- Using a prying tool, pull up on the rim of the speaker front.

## Step 5

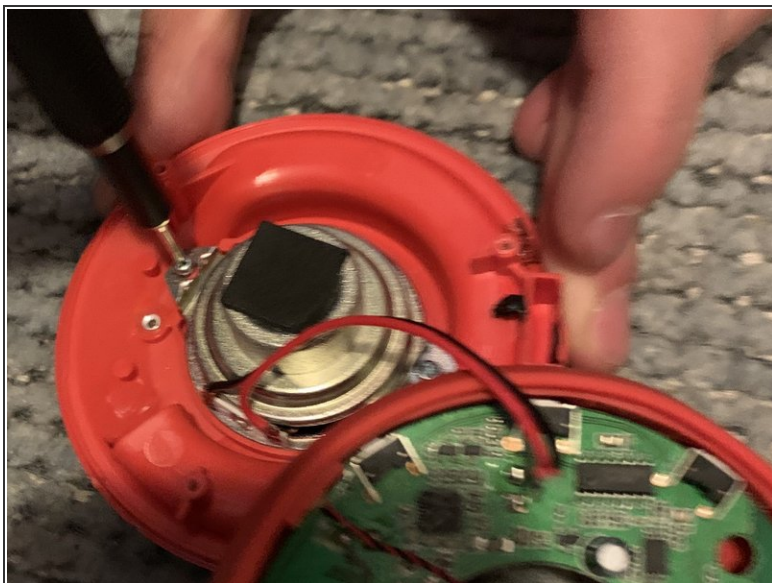


- Pull up to reveal the other side of the speaker chip and the speaker component itself.

⚠ Be careful of the wire connecting the speaker to the board as too much pressure may cause it to snap.

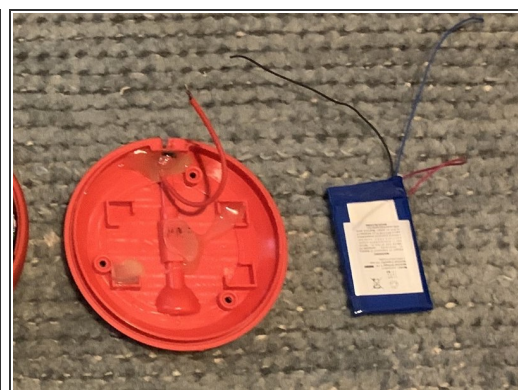


## Step 6



- Unscrew the speaker connecting to the front piece of plastic.
- Pull the speaker off of the front piece.

## Step 7



- Teardown is fully finished. There are only 5 main separate components to the speaker!