



# Sony SRS-BTX300 Battery Pack Disassembly

Disassembly of SRS-BTX300 Speakers

Written By: Raffael Anklin





## PARTS:

- [power connector](#) (1)

<https://de.aliexpress.com/item/32675650097.html?>

---

## Step 1 — Open battery panel remove rubber seals



- Start opening the battery panel by removing the two rubber seals.

## Step 2 — Open battery panel screws



- Use a phillips tip screwdriver to open the battery panel.



### Step 3 — Remove the battery



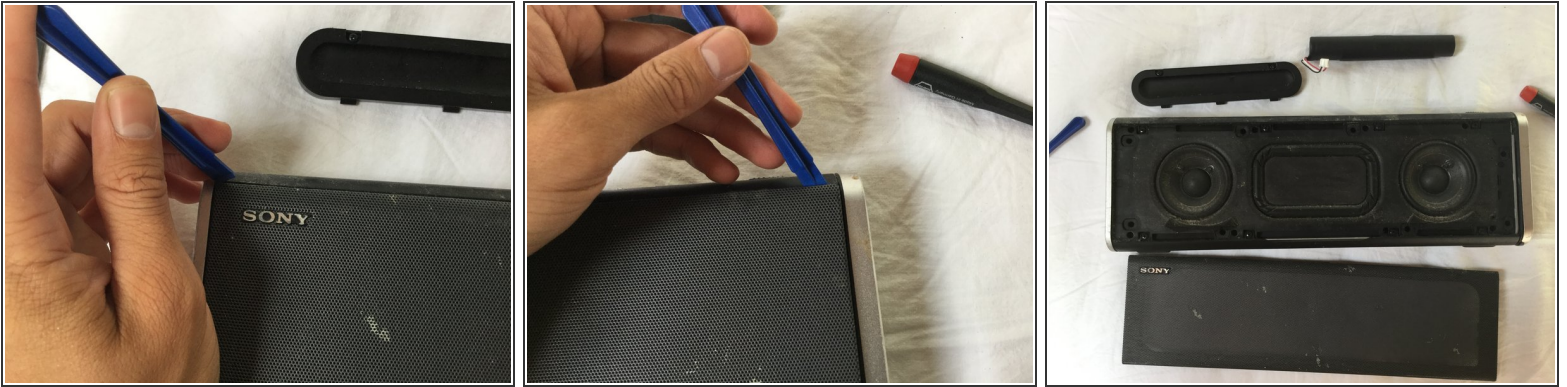
- Lift up the panel and unplug the battery.

### Step 4 — Remove battery screws



- Under the battery there are two phillips tip screws. Remove them to continue to the motherboard disassembly.

## Step 5 — Remove front enclosure



- Use a spattle to lift up the front enclosure.

## Step 6 — Remove front screws



- Use a phillips screw driver to remove all the visibel screws. There should be 17 screws.



## Step 7 — Remove bottom enclosure



- Gently pull down the bottom enclosure and remove it.

## Step 8 — Remove back enclosure



- Use your fingers to remove the back enclosure. Unplug the cables before removing it completely.