



# Motorola Moto E4 Plus Battery Replacement

Follow this guide to remove and replace the...

Written By: Arthur Shi



# INTRODUCTION

Follow this guide to remove and replace the battery for the Moto E4 Plus. Getting to the battery is not very difficult, but the battery itself is held onto the frame with strong adhesive. You will need to use high concentration (over 90%) isopropyl alcohol in order to loosen the battery from the phone.

Before you begin, download the [Rescue and Smart Assistant](#) app to backup your device and diagnose whether your problem is software or hardware related.

If your battery is swollen, [take appropriate precautions](#).

**For your safety, discharge your battery below 25% before disassembling your phone.** This reduces the risk of a dangerous thermal event if the battery is accidentally damaged during the repair.



## TOOLS:

[Spudger](#) (1)  
[T3 Torx Screwdriver](#) (1)  
[iFixit Opening Picks \(Set of 6\)](#) (1)  
[Isopropyl Alcohol](#) (1)



## PARTS:

[Moto E4 Plus Battery - Genuine](#) (1)  
[Moto E4 Plus Battery Adhesive Strips - Genuine](#) (1)

---

## Step 1 — Remove the back cover



**i** Power off your phone before beginning disassembly.

- Insert the edge of the spudger into the notch on the bottom right corner of the phone.
- Twist the spudger to start releasing the back cover from the phone.
- Slide the spudger along the bottom edge to separate the back cover from the phone.

## Step 2



- Lift the phone unit out of the back cover.

### Step 3 — Remove the midframe screws



- Remove the nineteen 3.2 mm long T3 screws securing the plastic midframe.

## Step 4 — Release the midframe clips



**i** The plastic midframe is still held in place with clips.

- Insert the flat end of a spudger into the midframe seam at the bottom left corner of the phone (near the microphone hole).
- Twist the spudger to release the plastic clip.
- Repeat the process for the clip near the top right corner of the phone.



## Step 5 — Remove the midframe



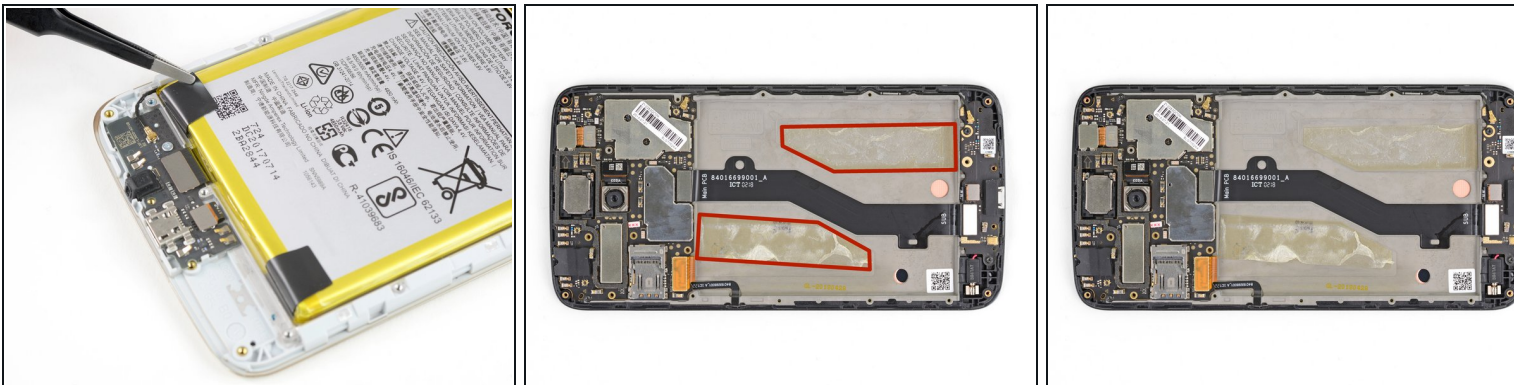
- Lift the bottom edge of the plastic midframe upwards until the clips along the top edge release.
  - Remove the plastic midframe.
- ☒ To reattach the plastic midframe, line up the midframe to the phone and squeeze along the edges to engage the clips.

## Step 6 — Disconnect the battery



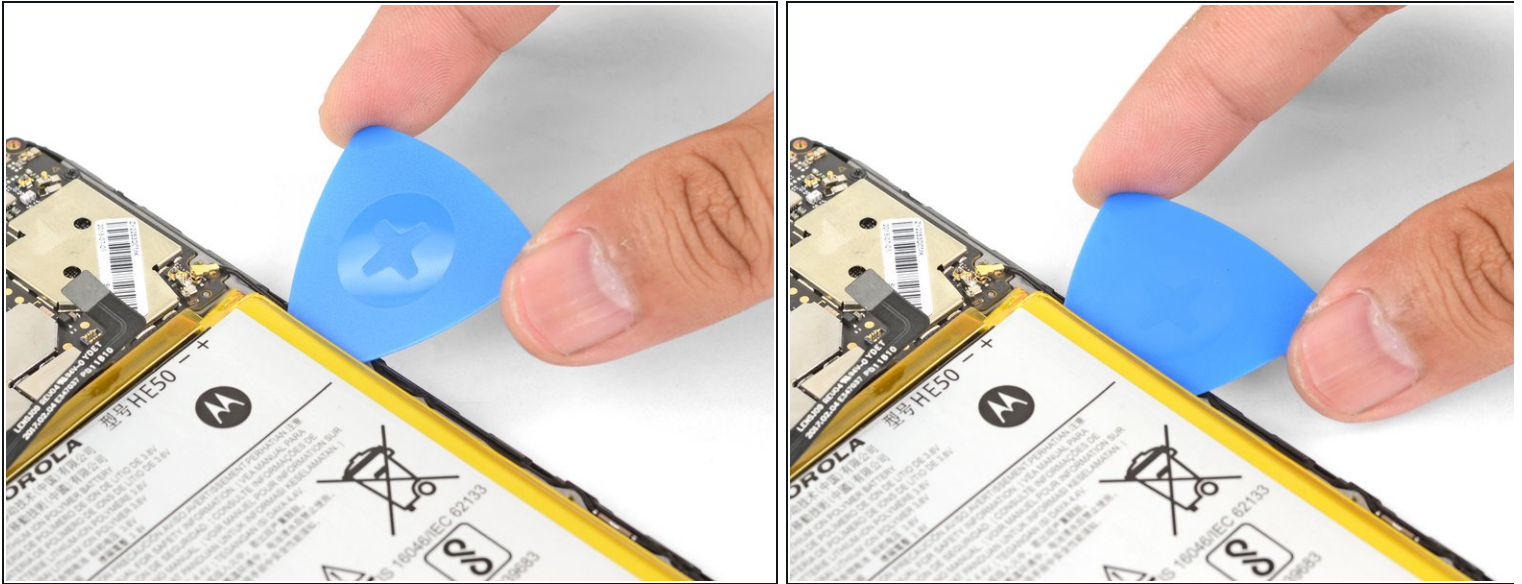
- Use the point of a spudger to pry up and disconnect the battery connector from its motherboard socket.

## Step 7 — Battery adhesives



- ❗ If your battery has two black tabs near the bottom corners, the battery is held in place by stretch-release adhesives. If that's the case, [follow this guide instead](#) to complete your battery replacement.
- Before you begin prying, note that the battery is held in place by two adhesive strips.

## Step 8 — Loosen the battery



- Insert an opening pick into the top right edge of the battery.
- Push the opening pick in carefully until half of the pick is under the battery.

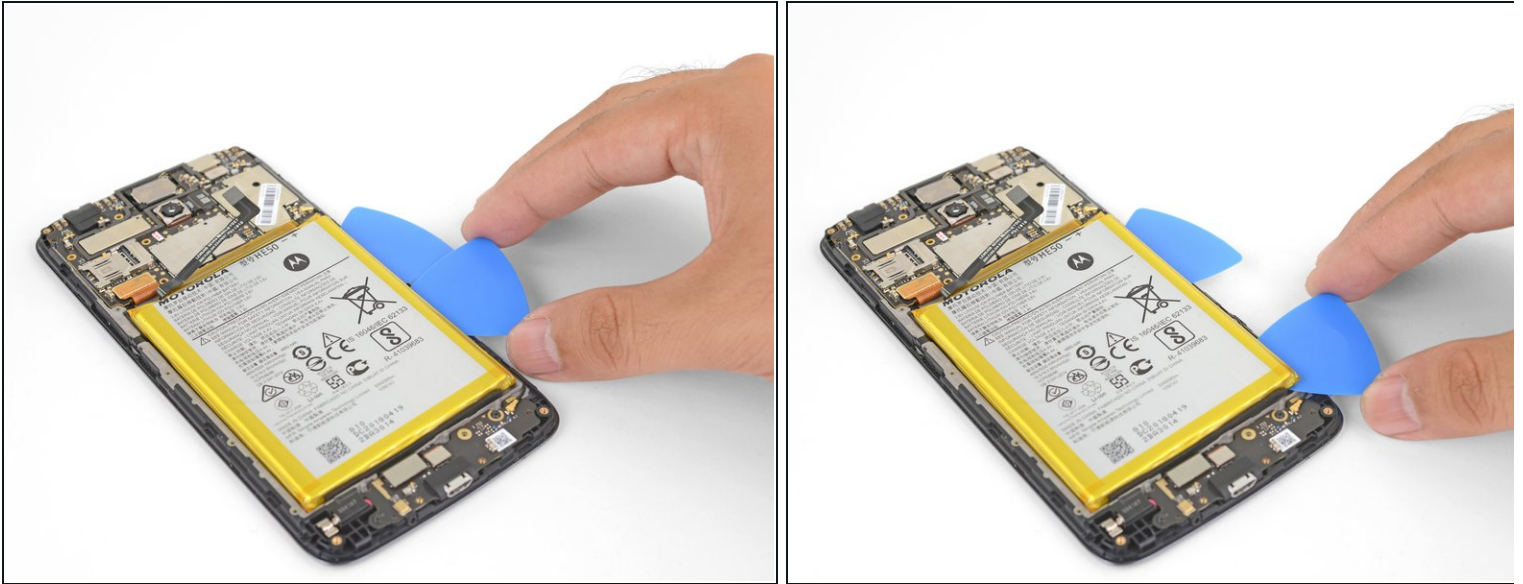
## Step 9



- Fill a plastic dropper or syringe with high concentration isopropyl alcohol and apply a few drops of alcohol along the right edge of the battery.
- Tilt the edge up slightly for a minute to allow the isopropyl alcohol to soften the adhesive.



## Step 10



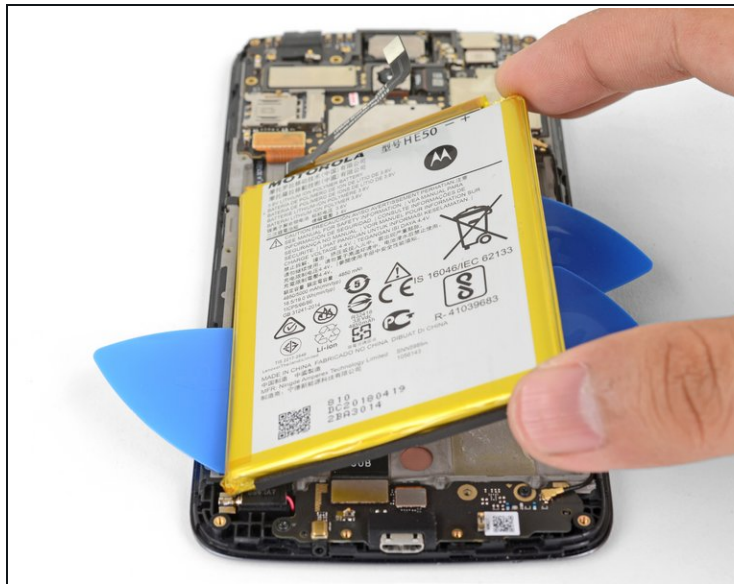
- i** As you slice through the adhesive with the opening pick, try your best not to bend the battery pack. Soft shell lithium-ion batteries are highly susceptible to damage and can ignite when compromised.
- Insert another opening pick into the right edge, near the first opening pick.
  - Slide the opening pick down along the right edge to loosen the right adhesive strip.
  - If the slicing feels difficult, apply a few more drops of isopropyl alcohol into the edge, wait a minute for it to seep in, and try again.

## Step 11



- Insert an opening pick into the bottom left edge of the battery.
- Push the opening pick until it is halfway under the battery.
- Apply isopropyl alcohol along the left edge and let it sit for a minute to weaken the adhesive.

## Step 12



- Grasp the battery along the right corners and slowly lift the right edge upwards.

⚠ If the battery begins to bend significantly, **stop** and re-apply more isopropyl alcohol to the left adhesive strip.

## Step 13



- Remove the battery.

**⚠ Do not reuse the battery after it has been removed, as doing so is a potential safety hazard. Replace it with a new battery.**

- ☑ To install a replacement battery:
  - Remove the old adhesive from the phone frame.
  - Apply new adhesive in the same general area as the old adhesive.
  - Lay the battery lightly in place. Check that the battery connector is properly aligned with its motherboard socket.
  - Press the battery firmly into the phone for thirty seconds.

To reassemble your device, follow these instructions in reverse order.

**For optimal performance, calibrate your newly installed battery:** Charge it to 100% and keep charging it for at least 2 more hours. Then use your device until it shuts off due to low battery. Finally, charge it uninterrupted to 100%.

Take your e-waste to an [R2 or e-Stewards certified recycler](#).

Repair didn't go as planned? Try some [basic troubleshooting](#), or ask our [Moto E4 Plus Answers community](#) for help.