



Lexmark Intuition S505 Scanner Unit Replacement

This guide will inform readers how to install the scanner unit of the printer.

Written By: Raymond



INTRODUCTION

The scanner unit allows users to scan copies.



TOOLS:

- [Tweezers](#) (1)
 - [Phillips #2 Screwdriver](#) (1)
 - [iFixit Opening Tools](#) (1)
-

Step 1 — Duplex Unit



- Hold the button down with the flat end away from the printer. When you hear a click, the duplex unit can be removed from the printer.

Step 2



- Remove the duplex unit from the back of the printer with the duplex unit facing up.

Step 3 — Scanner Unit



- Locate the two screw holes that connect the two cylindrical extensions from the top portion of the scanner unit to the printer.

Step 4



- Unscrew the two size#6 (5-mm head) Phillips 1-mm screws connecting the scanner unit to the printer.

Step 5



- Raise and close the scanner unit to observe that the hinges lock in place when lifted.

Step 6



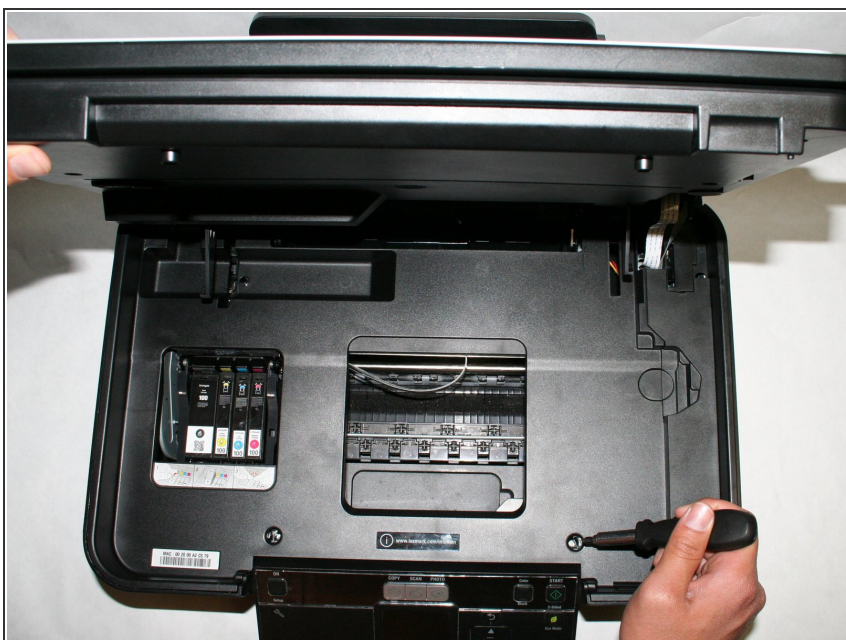
- Firmly press the hinges inward toward the middle of the printer on both sides at the same time. The hinges should be easily lifted up and removed.

Step 7



- Locate the three screws connecting the plastic tray to the printer.

Step 8



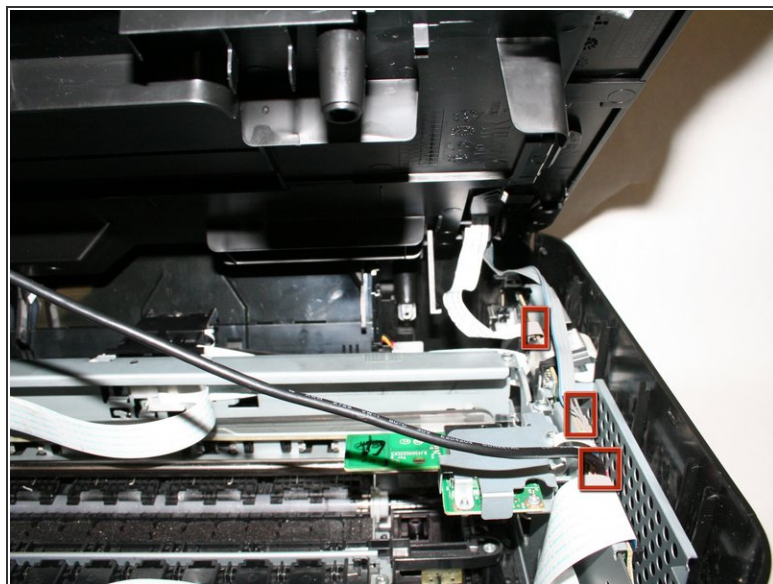
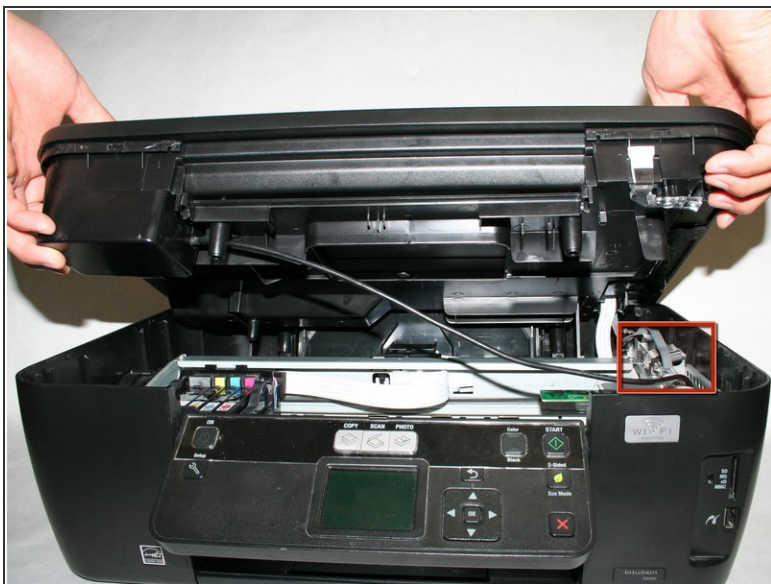
- Remove the three size#6 (5-mm head) Phillips 1-mm screws connecting the scanner unit to the printer.

Step 9



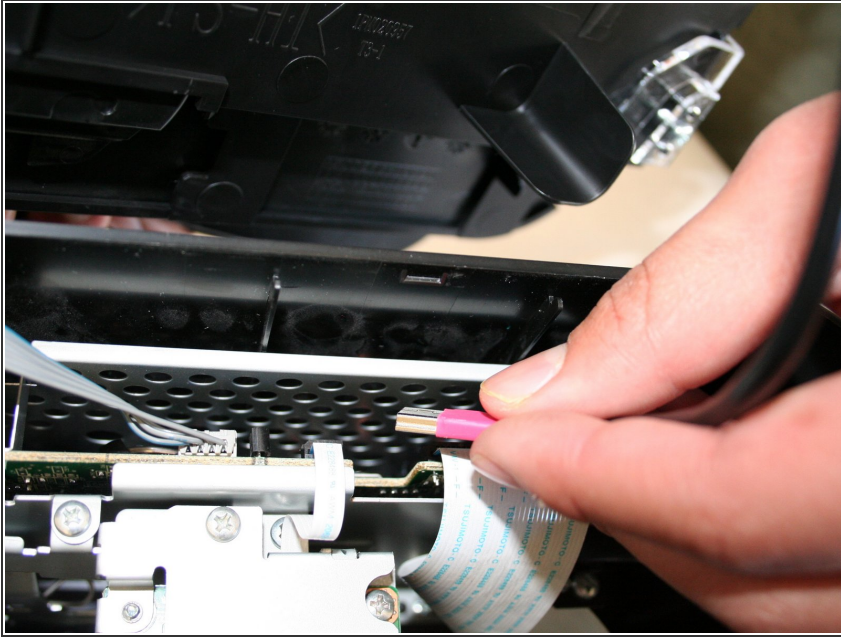
- Remove the plastic cover by unlocking the plastic hinges at the inside edges of the printer. Use a plastic opening tool or a tweezer to slowly move in between the crease around the printer to unlock it.

Step 10



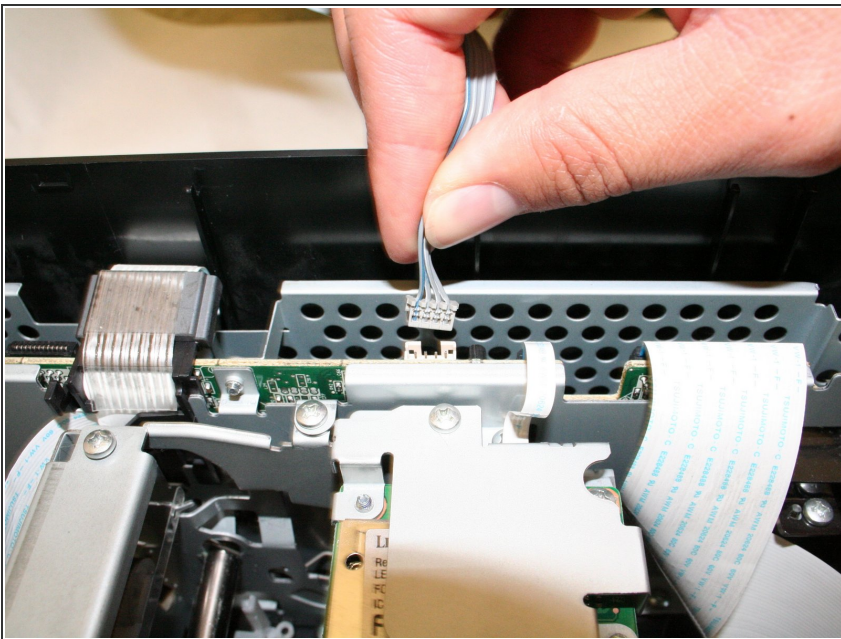
- Slowly raise, but do not remove the plastic cover with the scanner unit so that it exposes the three cables connecting the scanner unit to the printer.

Step 11



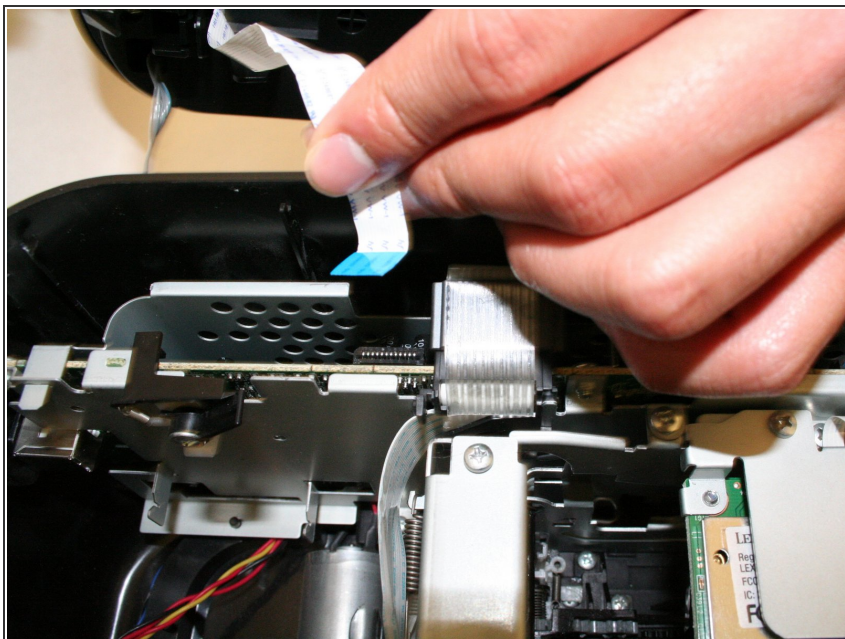
- Carefully unplug the pink cable.

Step 12



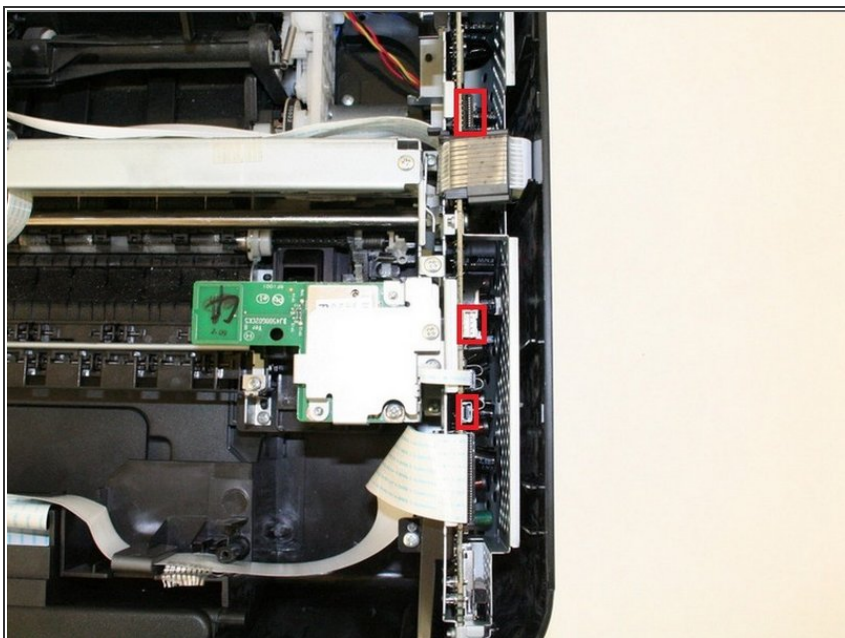
- Carefully unplug the gray data cable.

Step 13



- Carefully unplug the white ribbon data cable.

Step 14



- Locate the three ports for the cables from the scanner unit and make sure they are unplugged.

Step 15



- Remove the scanner unit with the plastic cover by lifting it up from the bottom portion of the printer.

⚠ Be careful with the paper tray and make sure it is evenly lifted through the rectangular hole in the plastic tray

To reassemble your device, follow these instructions in reverse order.